

KD-Validated Anti-ATG13 Rabbit Monoclonal Antibody



Catalog #: 61799

Aliases

ATG13; Autophagy Related 13; KIAA0652; Autophagy-Related Protein 13; ATG13 Autophagy Related 13 Homolog (S. Cerevisiae); ATG13 Autophagy Related 13 Homolog; PARATARG8

Background

Gene Name: ATG13

NCBI Gene Entry: [9776](#)

UniProt Entry: [O75143](#)

Application Information

Molecular Weight: Predicted, 57 kDa; observed, 72 kDa

Clonality: Rabbit monoclonal antibody

Clone ID: 25GB3830

Species Reactivity: Human, mouse, rat

Applications Tested: Western blotting (WB), flow cytometry (FCM), immunocytochemistry (IC)

Immunogen

Recombinant protein of human KIAA0652

Isotype

Rabbit IgG

Storage Buffer

Supplied in PBS (pH 7.4) containing 50% glycerol, and 0.02% sodium azide.

Storage

Store at -20 °C for one year.

Recommended Dilutions

Western Blotting (WB): 1:1,000-1:5,000

Flow Cytometry (FCM): 1:2,000

Immunocytochemistry (IC): 1:100-1:1,000

Note: This product is for research use only.

Validation Data

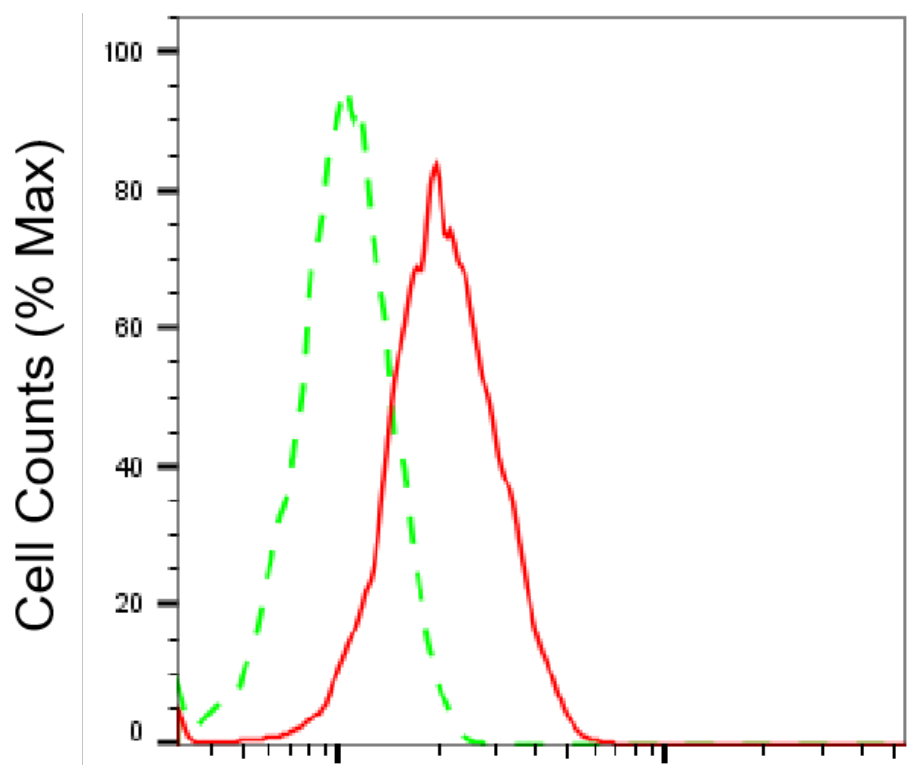
SUPPORT

SUPPORT@GENUINBIOTECH.COM
TEL: +1-540-855-7041

ORDERS

SALES@GENUINBIOTECH.COM
FAX: +1-540-855-7041

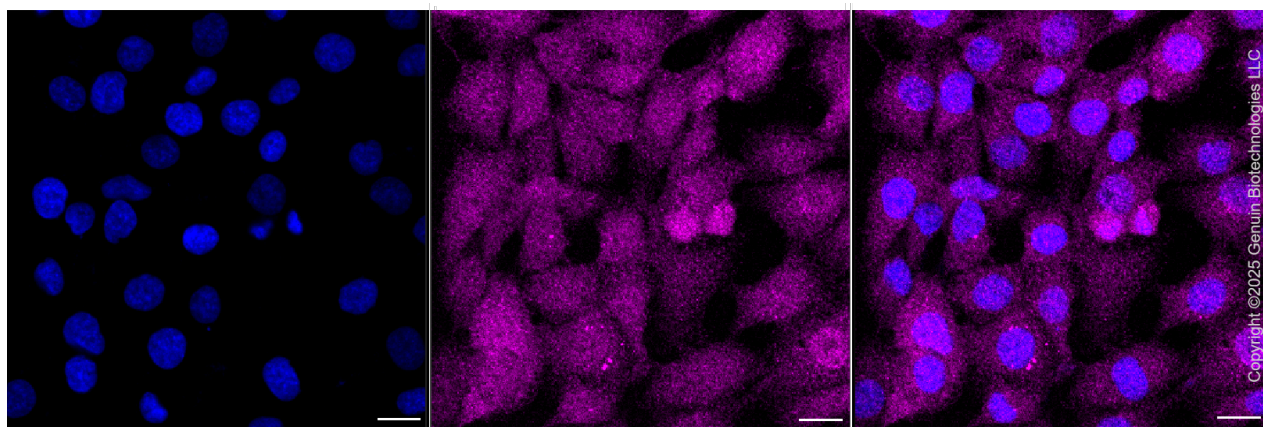
WWW.GENUINBIOTECH.COM



Copyright ©2025 Genuin Biotechnologies LLC

ATG13-Alexa Fluor® 647

Flow cytometric analysis of ATG13 expression in HT-1080 cells using anti-ATG13 antibody (Cat#61799, 1:2,000). Green, isotype control; red, ATG13.



Copyright ©2025 Genuin Biotechnologies LLC

Immunocytochemical staining of HT-1080 cells with anti-ATG13 antibody (Cat#61799, 1:1,000). Nuclei were stained blue with DAPI; ATG13 was stained magenta with Alexa Fluor® 647. Images were taken using Leica stellaris 5. Protein abundance based on laser Intensity and smart gain: Medium. Scale bar, 20 μ m.

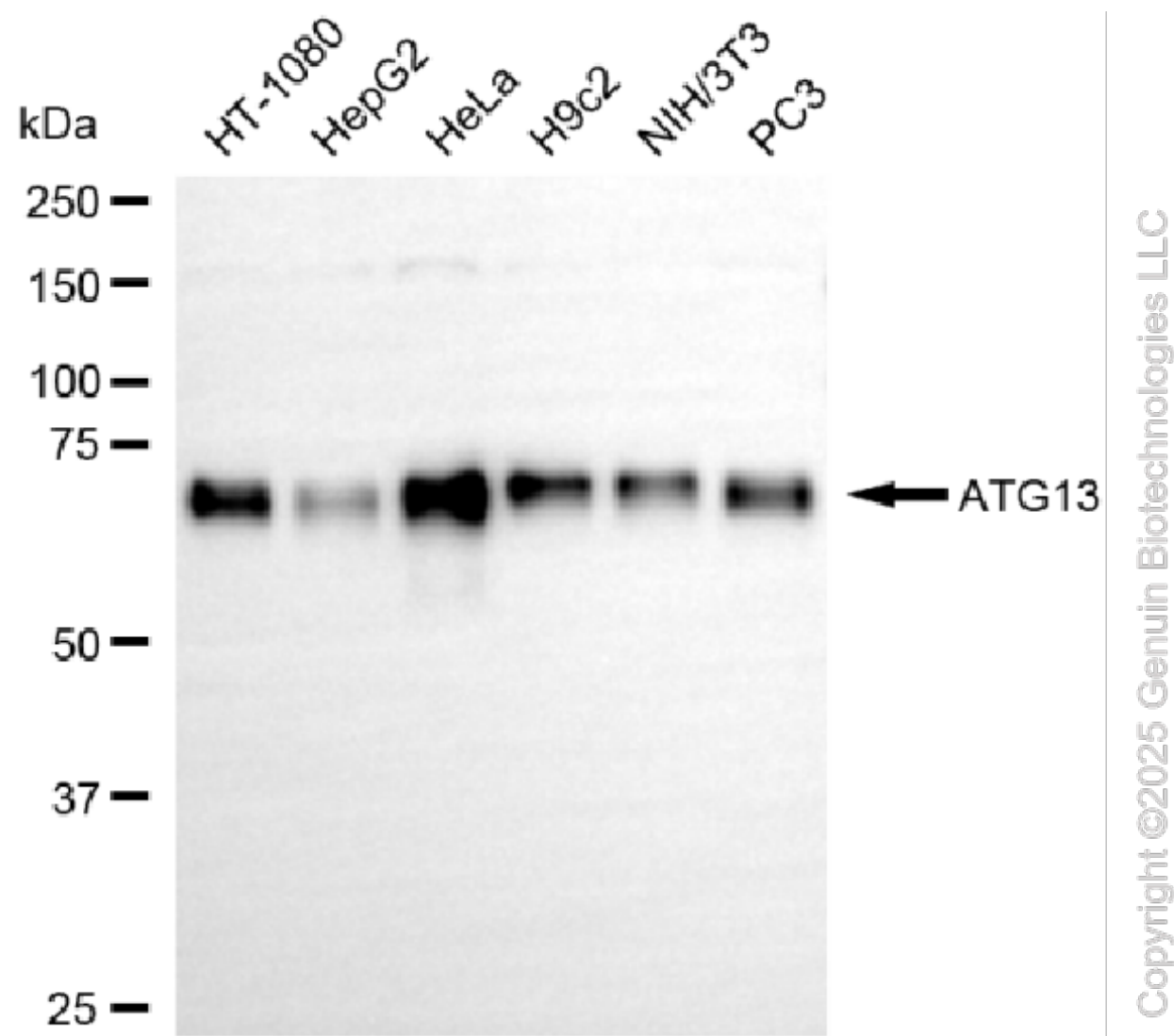
SUPPORT

SUPPORT@GENUINBIOTECH.COM
TEL: +1-540-855-7041

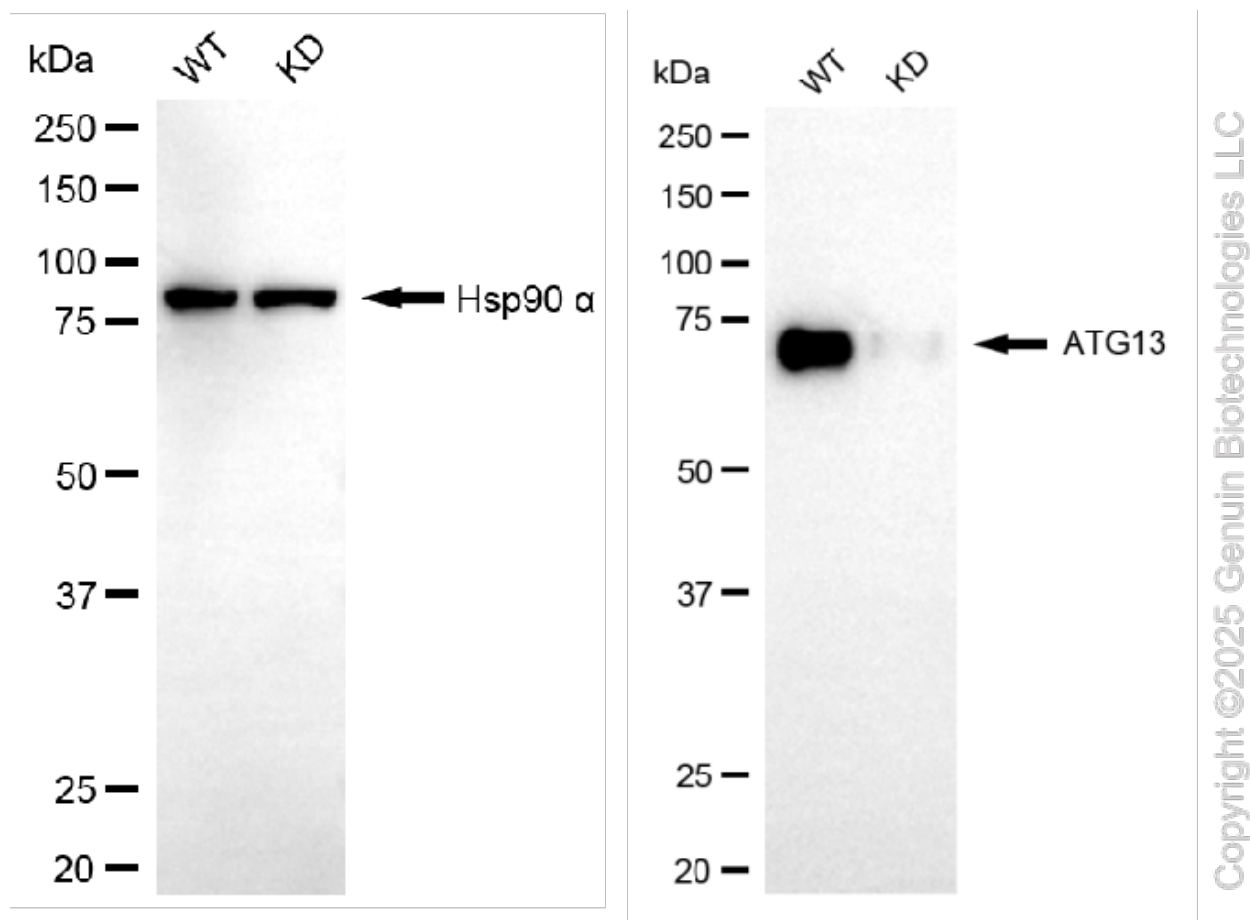
ORDERS

SALES@GENUINBIOTECH.COM
FAX: +1-540-855-7041

WWW.GENUINBIOTECH.COM



Western blotting analysis using anti-ATG13 antibody (Cat#61799). Total cell lysates (30 µg) from various cell lines were loaded and separated by SDS-PAGE. The blot was incubated with anti-ATG13 antibody (Cat#61799, 1:5,000) and HRP-conjugated goat anti-rabbit secondary antibody (Cat#201, 1:20,000) respectively. Image was developed using NaQ™ ECL Substrate Kit (Cat#716).



Western blotting analysis using anti-ATG13 antibody (Cat#61799). ATG13 expression in wild-type (WT) and ATG13 knockdown (KD) HeLa cells with 20 μ g of total cell lysates. Hsp90 α serves as a loading control. The blot was incubated with anti-ATG13 antibody (Cat#61799, 1:5,000) and HRP-conjugated goat anti-rabbit secondary antibody (Cat#201, 1:20,000) respectively. Image was developed using NaQ™ ECL Substrate Kit (Cat#716).