

KD-Validated Anti-ALAS2 Rabbit Monoclonal Antibody



Catalog #: 61800

Aliases

ALAS2; 5'-Aminolevulinate Synthase 2; ALAS-E; ASB; 5-Aminolevulinate Synthase, Erythroid-Specific, Mitochondrial; Erythroid-Specific Delta-Aminolevulinate Synthase; Aminolevulinate, Delta-, Synthase 2; 5-Aminolevulinic Acid Synthase 2; Delta-Aminolevulinate Synthase 2; Delta-ALA Synthase 2; EC 2.3.1.37; ALASE; Aminolevulinate, Delta-, Synthase 2 (Sideroblastic/Hypochromic Anemia); Sideroblastic/Hypochromic Anemia; Delta-ALA Synthetase; SIDBA1; XLDPP; XLEPP; ANH1; XLSA

Background

Gene Name: ALAS2

NCBI Gene Entry: [212](#)

UniProt Entry: [P22557](#)

Application Information

Molecular Weight: Predicted, 65 kDa; observed, 65 kDa

Clonality: Rabbit monoclonal antibody

Clone ID: 25GB3835

Species Reactivity: Human, mouse, rat

Applications Tested: Western blotting (WB), flow cytometry (FCM), immunocytochemistry (IC)

Immunogen

A synthesized peptide derived from human ALAS2

Isotype

Rabbit IgG

Storage Buffer

Supplied in PBS (pH 7.4) containing 50% glycerol, and 0.02% sodium azide.

Storage

Store at -20 °C for one year.

Recommended Dilutions

Western Blotting (WB): 1:1,000-1:5,000

Flow Cytometry (FCM): 1:2,000

Immunocytochemistry (IC): 1:100-1:1,000

SUPPORT

SUPPORT@GENUINBIOTECH.COM
TEL: +1-540-855-7041

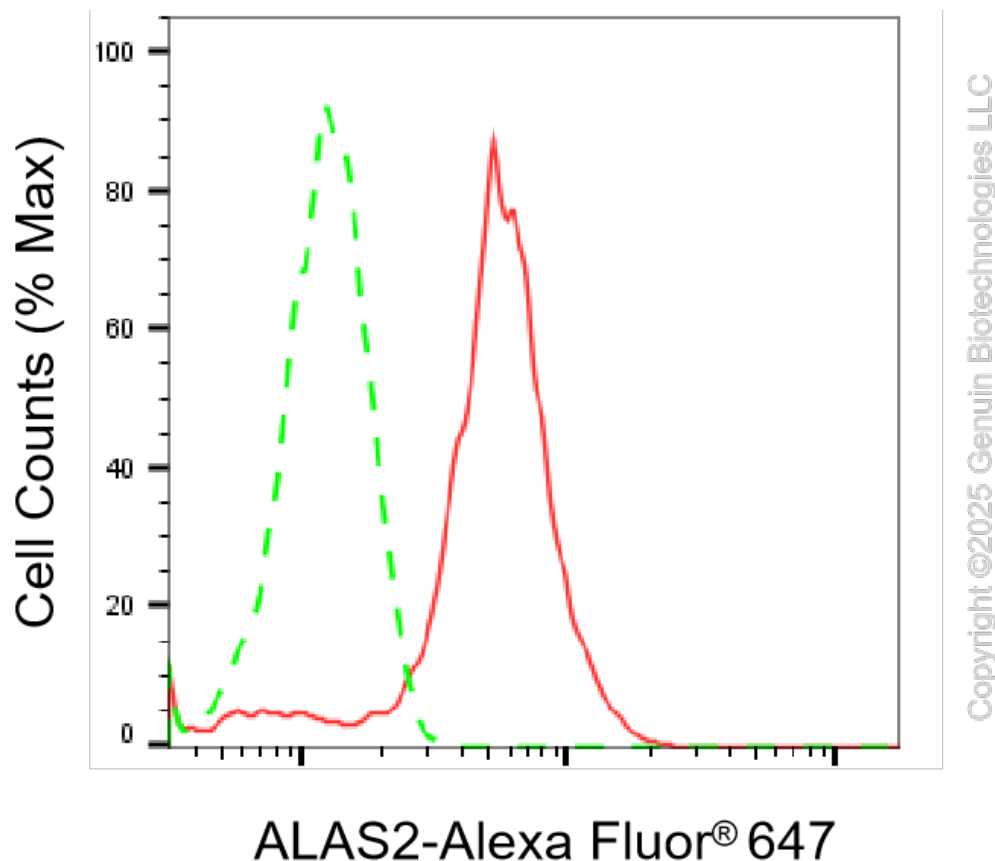
ORDERS

SALES@GENUINBIOTECH.COM
FAX: +1-540-855-7041

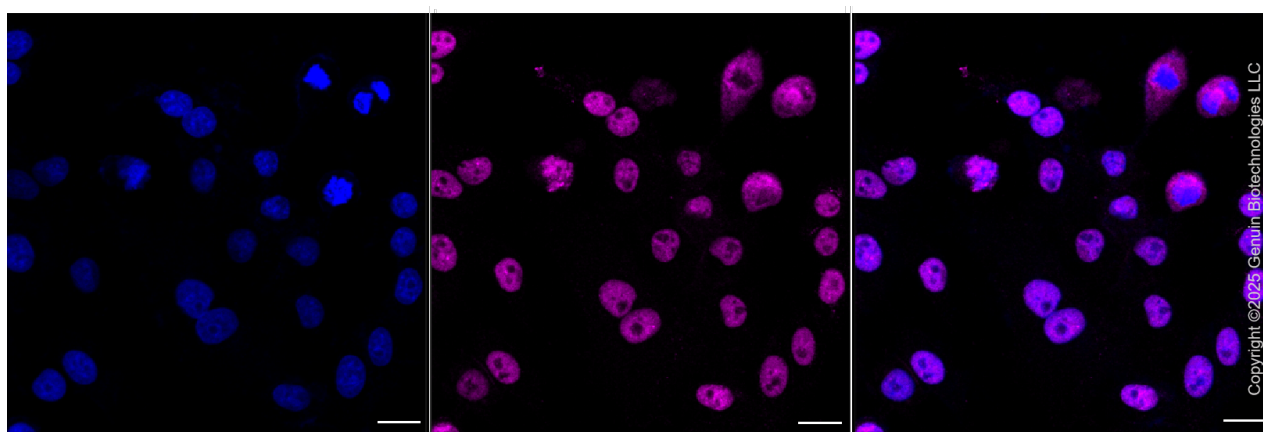
WWW.GENUINBIOTECH.COM

Note: This product is for research use only.

Validation Data



Flow cytometric analysis of ALAS2 expression in HepG2 cells using anti-ALAS2 antibody (Cat#61800, 1:2,000). Green, isotype control; red, ALAS2.



Immunocytochemical staining of HepG2 cells with anti-ALAS2 antibody (Cat#61800, 1:1,000). Nuclei were stained blue with DAPI; ALAS2 was stained magenta with Alexa Fluor® 647. Images were taken using Leica stellaris 5. Protein abundance based on laser Intensity and smart

SUPPORT

SUPPORT@GENUINBIOTECH.COM
TEL: +1-540-855-7041

ORDERS

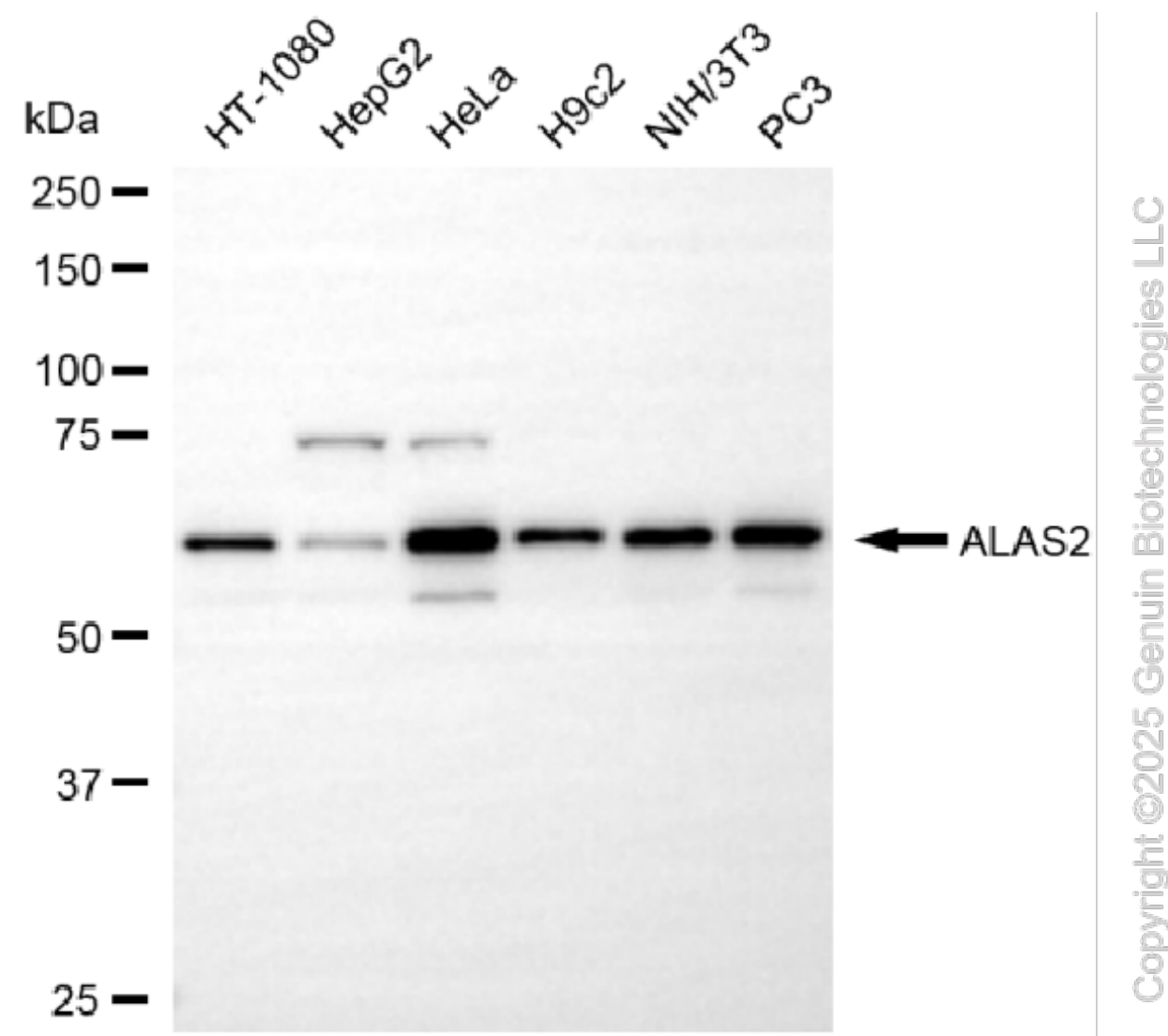
SALES@GENUINBIOTECH.COM
FAX: +1-540-855-7041

WWW.GENUINBIOTECH.COM

KD-Validated Anti-ALAS2 Rabbit Monoclonal Antibody

PAGE 3

gain: High. Scale bar, 20 μ m.



Western blotting analysis using anti-ALAS2 antibody (Cat#61800). Total cell lysates (30 μ g) from various cell lines were loaded and separated by SDS-PAGE. The blot was incubated with anti-ALAS2 antibody (Cat#61800, 1:5,000) and HRP-conjugated goat anti-rabbit secondary antibody (Cat#201, 1:20,000) respectively. Image was developed using NaQ™ ECL Substrate Kit (Cat#716).

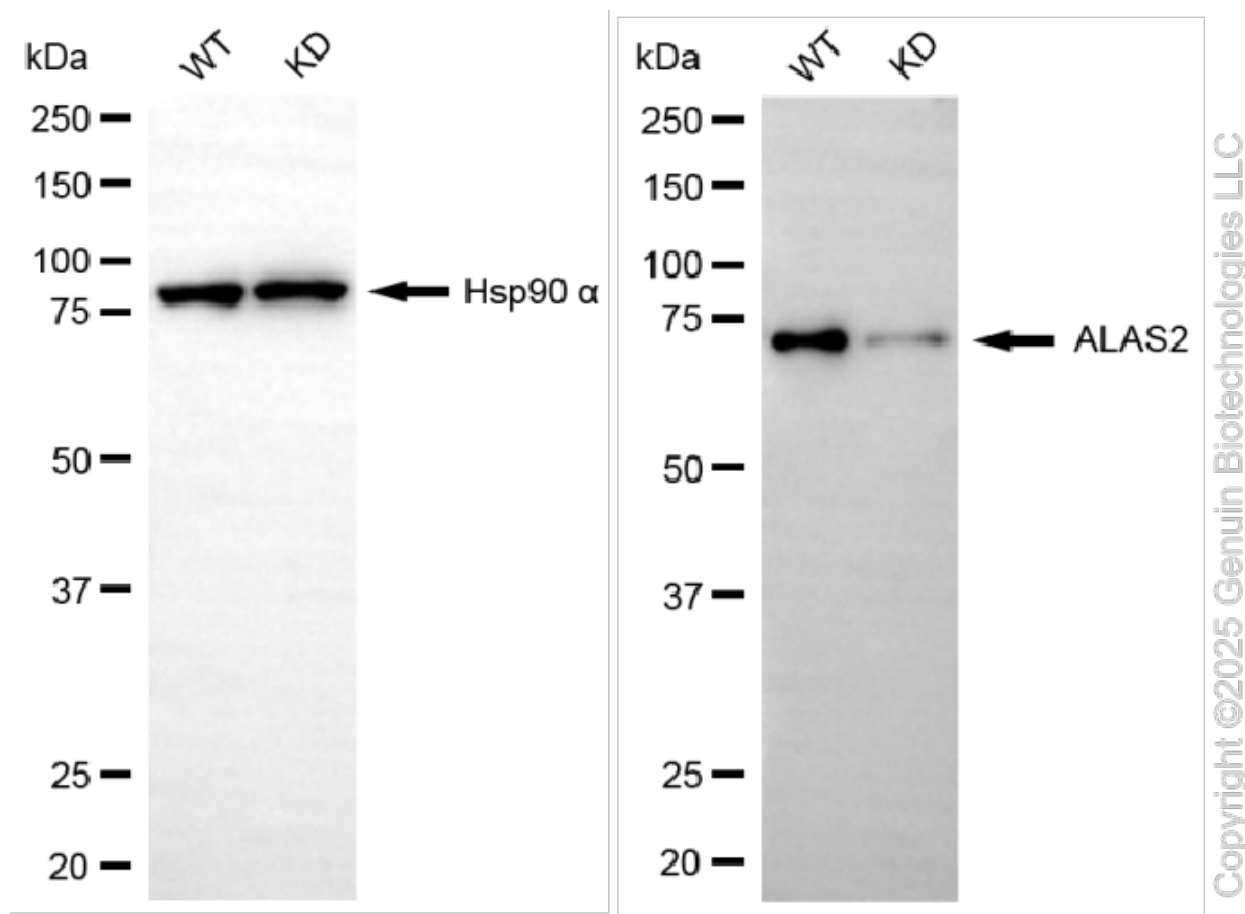
SUPPORT

SUPPORT@GENUINBIOTECH.COM
TEL: +1-540-855-7041

ORDERS

SALES@GENUINBIOTECH.COM
FAX: +1-540-855-7041

WWW.GENUINBIOTECH.COM



Western blotting analysis using anti-ALAS2 antibody (Cat#61800). ALAS2 expression in wild-type (WT) and ALAS2 knockdown (KD) HeLa cells with 20 µg of total cell lysates. Hsp90 α serves as a loading control. The blot was incubated with anti-ALAS2 antibody (Cat#61800, 1:5,000) and HRP-conjugated goat anti-rabbit secondary antibody (Cat#201, 1:20,000) respectively. Image was developed using NaQ™ ECL Substrate Kit (Cat#716).