

# KD-Validated Anti-p38 MAPK Recombinant Rabbit Monoclonal Antibody



**Catalog #: 61802**

## Aliases

MAPK14; Mitogen-Activated Protein Kinase 14; PRKM14; PRKM15; CSBP1; CSBP2; CSPB1; P38; Mitogen-Activated Protein Kinase P38 Alpha; MAX-Interacting Protein; CSAID-Binding Protein; MAP Kinase P38 Alpha; P38 MAP Kinase; MAP Kinase 14; EC 2.7.11.24; SAPK2A; Mxi2; CSBP; MXI2; Cytokine Suppressive Anti-Inflammatory Drug Binding Protein; Cytokine Suppressive Anti-Inflammatory Drug-Binding Protein; P38 Mitogen Activated Protein Kinase; Stress-Activated Protein Kinase 2A; Stress-Activated Protein Kinase 2a; MAP Kinase Mxi2; MAP Kinase MXI2; P38alpha Exip; EC 2.7.11; P38ALPHA; MAPK 14; SAPK2a; EXIP; RK

## Background

Gene Name: MAPK14

NCBI Gene Entry: [1432](#)

UniProt Entry: [Q16539](#)

## Application Information

Molecular Weight: Predicted, 41 kDa, observed, 38 kDa

Clonality: Rabbit monoclonal antibody

Clone ID: 23GB4535

Species Reactivity: Human, mouse, rat

Applications Tested: Western blotting (WB), flow cytometry (FCM), immunocytochemistry (IC)

## Immunogen

A synthesized peptide derived from human p38 MAPK

## Isotype

Rabbit IgG

## Storage Buffer

Supplied in PBS (pH 7.4) containing 50% glycerol, and 0.02% sodium azide.

## Storage

Store at -20 °C for one year.

## Recommended Dilutions

Western Blotting (WB): 1:1,000-1:5,000

Flow Cytometry (FCM): 1:2,000

---

### SUPPORT

SUPPORT@GENUINBIOTECH.COM  
TEL: +1-540-855-7041

### ORDERS

SALES@GENUINBIOTECH.COM  
FAX: +1-540-855-7041

[WWW.GENUINBIOTECH.COM](http://WWW.GENUINBIOTECH.COM)

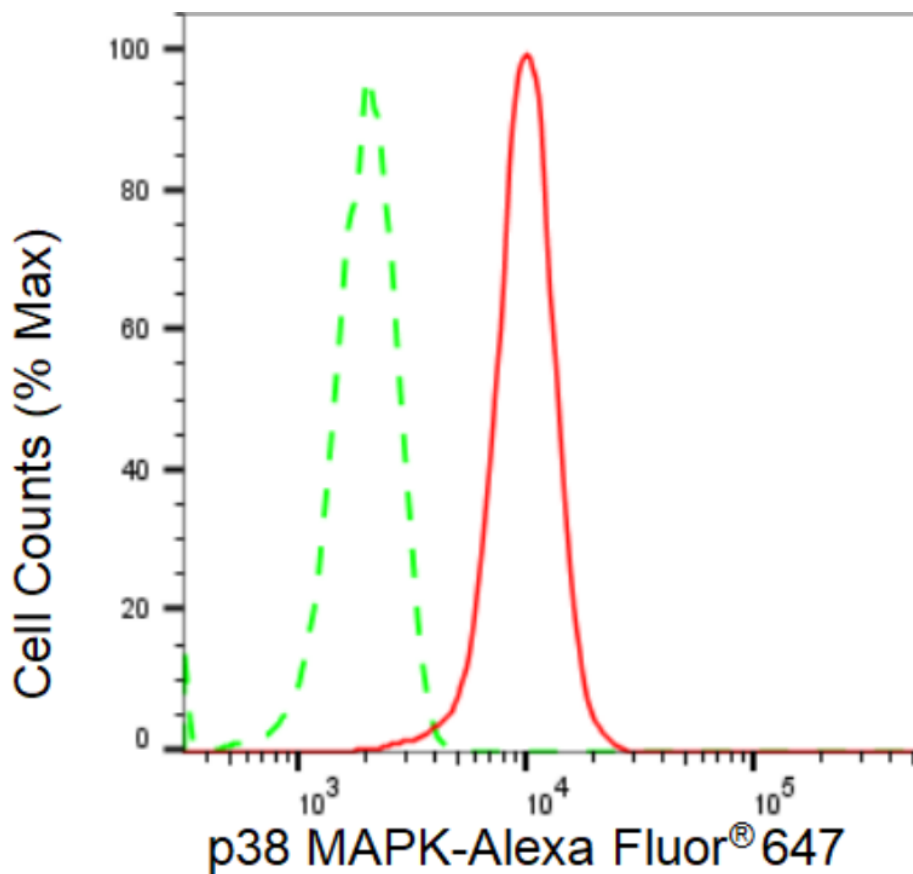
# KD-Validated Anti-p38 MAPK Recombinant Rabbit Monoclonal Antibody

PAGE 2

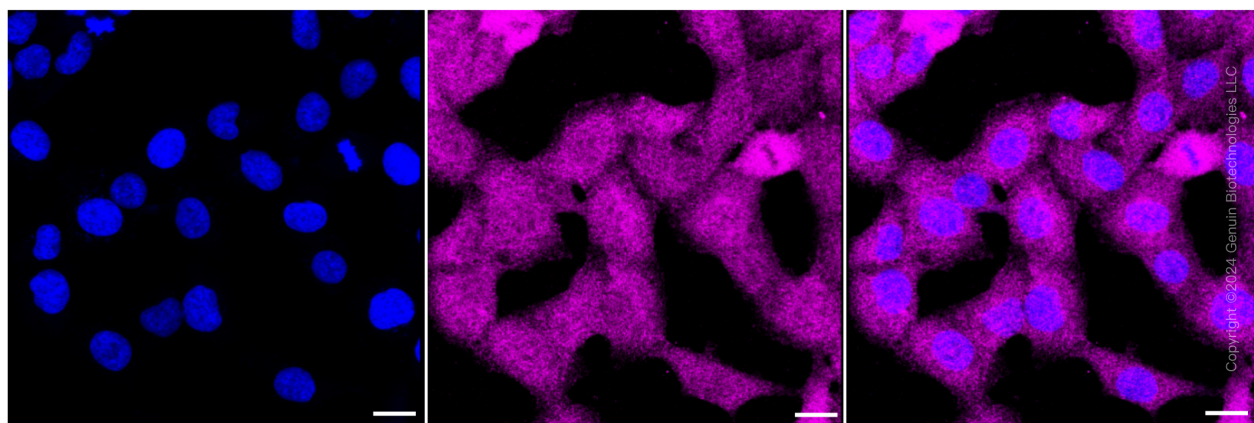
Immunocytochemistry (IC): 1:100-1:1,000

**Note:** This product is for research use only.

## Validation Data



Copyright ©2024 Genuin Biotechnologies LLC



Copyright ©2024 Genuin Biotechnologies LLC

### SUPPORT

SUPPORT@GENUINBIOTECH.COM  
TEL: +1-540-855-7041

### ORDERS

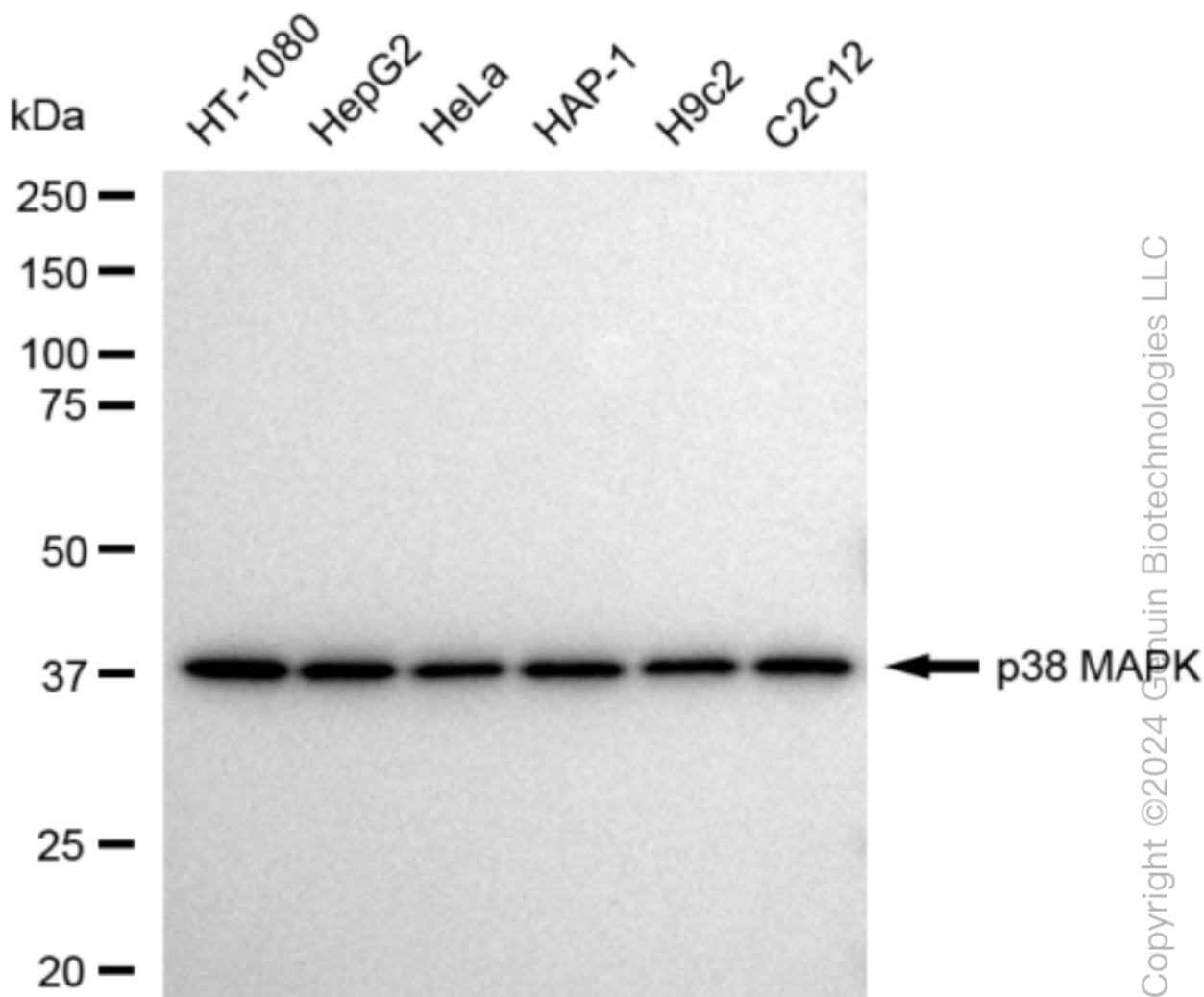
SALES@GENUINBIOTECH.COM  
FAX: +1-540-855-7041

WWW.GENUINBIOTECH.COM

## KD-Validated Anti-p38 MAPK Recombinant Rabbit Monoclonal Antibody

PAGE 3

Nuclei were stained blue with DAPI; p38 MAPK was stained magenta with Alexa Fluor® 647. Images were taken using Leica stellaris 5. Protein abundance based on laser Intensity and smart gain: Medium. Scale bar: 20  $\mu$ m.



Western blotting analysis using anti-p38 MAPK antibody (Cat#61802). Total cell lysates (30  $\mu$ g) from various cell lines were loaded and separated by SDS-PAGE. The blot was incubated with anti-p38 MAPK antibody (Cat#61802, 1:5,000) and HRP-conjugated goat anti-rabbit secondary antibody (Cat#201, 1:20,000) respectively. Image was developed using FeQ™ ECL Substrate Kit (Cat#226).

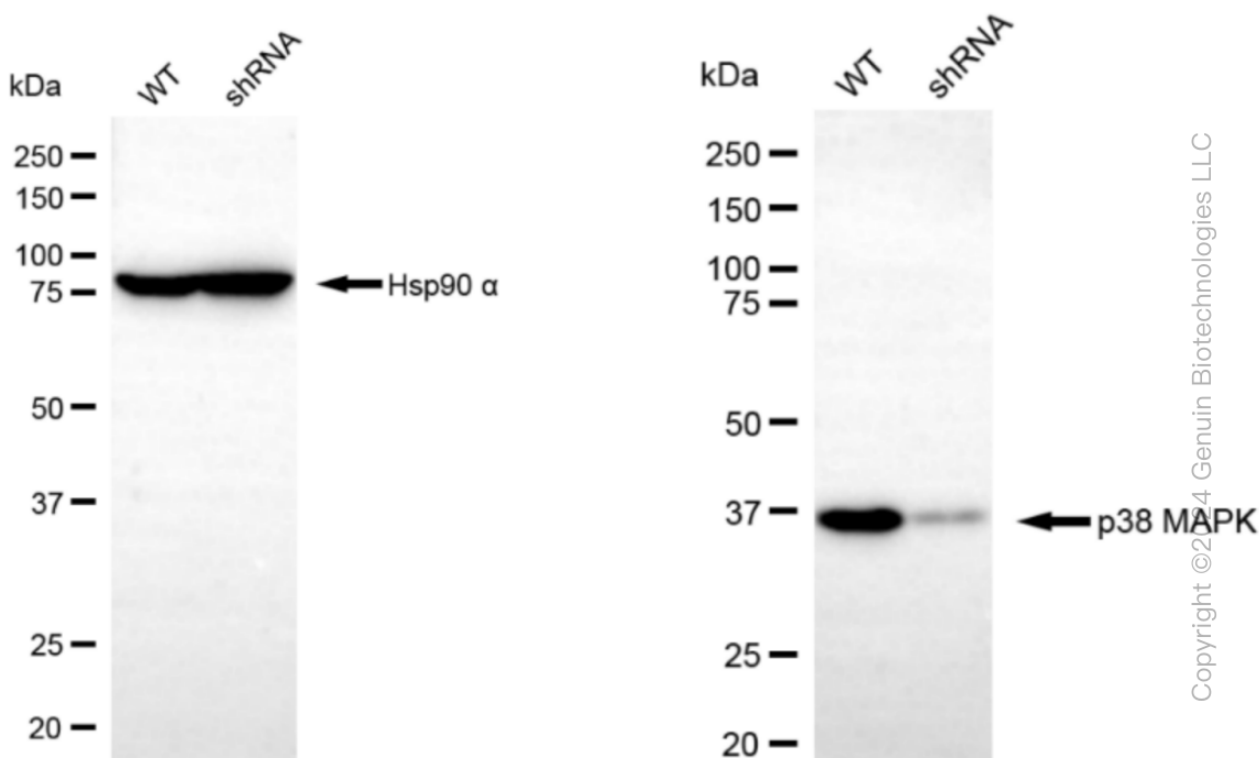
### SUPPORT

SUPPORT@GENUINBIOTECH.COM  
TEL: +1-540-855-7041

### ORDERS

SALES@GENUINBIOTECH.COM  
FAX: +1-540-855-7041

WWW.GENUINBIOTECH.COM



Western blotting analysis using anti-p38 MAPK antibody (Cat#61802). p38 MAPK expression in wild type (WT) and p38 MAPK shRNA knockdown (KD) HT-1080 cells with 30 µg of total cell lysates. β-Tubulin serves as a loading control. The blot was incubated with anti-p38 MAPK antibody (Cat#61802, 1:5,000) and HRP-conjugated goat anti-rabbit secondary antibody (Cat#201, 1:20,000) respectively. Image was developed using FeQ™ ECL Substrate Kit (Cat#226).