

# KD-Validated Anti-Methylmalonyl-CoA mutase Recombinant Rabbit Monoclonal Antibody



**Catalog #: 61805**

## Aliases

MMUT; Methylmalonyl-CoA Mutase; MCM; MUT; Methylmalonyl-CoA Mutase, Mitochondrial; Methylmalonyl Coenzyme A Mutase; Methylmalonyl-CoA Isomerase; EC 5.4.99.2; Methylmalonyl-CoA Mutase Variant C.613\_615delGAA; Methylmalonyl-CoA Mutase Variant C.1495G>A; Methylmalonyl-CoA Mutase Variant C.2011A>G; Methylmalonyl-CoA Mutase Variant C.2150G>T; Methylmalonyl-CoA Mutase Variant C.322C>T; Methylmalonyl-CoA Mutase Variant C.636G>A; Methylmalonyl-CoA Mutase Variant C.643G>A; Methylmalonyl-CoA Mutase C.\*192delA; Methylmalonyl-CoA Mutase C.\*51C>G; Mutant Methylmalonyl CoA Mutase

## Background

Gene Name: MMUT

NCBI Gene Entry: [4594](#)

UniProt Entry: [P22033](#)

## Application Information

Molecular Weight: Predicted, 83 kDa, observed, 74 kDa

Clonality: Rabbit monoclonal antibody

Clone ID: 23GB4550

Species Reactivity: Human, mouse, rat

Applications Tested: Western blotting (WB), flow cytometry (FCM), immunocytochemistry (IC)

## Immunogen

A synthesized peptide derived from human MUTA

## Isotype

Rabbit IgG

## Storage Buffer

Supplied in PBS (pH 7.4) containing 50% glycerol, and 0.02% sodium azide.

## Storage

Store at -20 °C for one year.

## Recommended Dilutions

Western Blotting (WB): 1:1,000-1:5,000

Flow Cytometry (FCM): 1:2,000

---

### SUPPORT

SUPPORT@GENUINBIOTECH.COM  
TEL: +1-540-855-7041

### ORDERS

SALES@GENUINBIOTECH.COM  
FAX: +1-540-855-7041

[WWW.GENUINBIOTECH.COM](http://WWW.GENUINBIOTECH.COM)

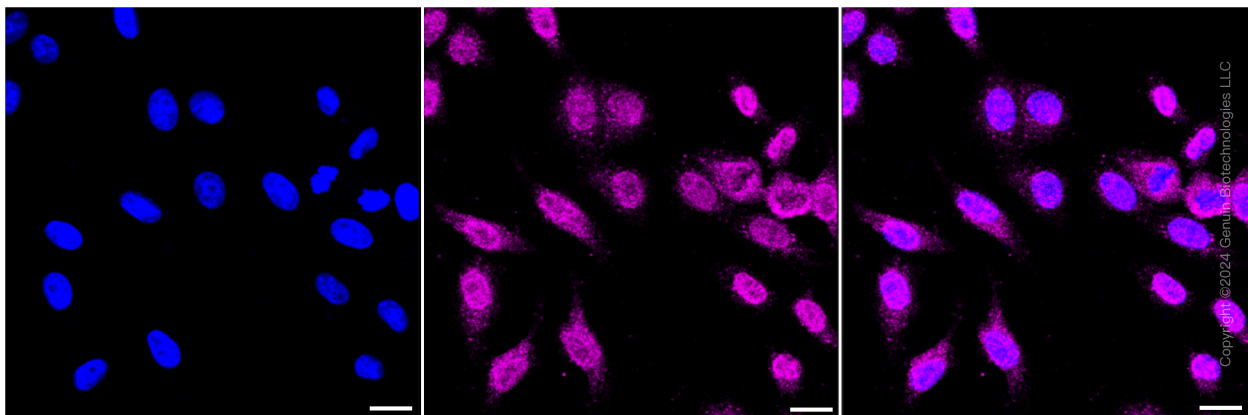
# KD-Validated Anti-Methylmalonyl-CoA mutase Recombinant Rabbit Monoclonal Antibody

PAGE 2

Immunocytochemistry (IC): 1:100-1:1,000

**Note:** This product is for research use only.

## Validation Data



Immunocytochemical staining of HepG2 cells with Methylmalonyl-CoA mutase antibody (Cat#61805, 1:1,000). Nuclei were stained blue with DAPI; Methylmalonyl-CoA mutase was stained magenta with Alexa Fluor® 647. Images were taken using Leica stellaris 5. Protein abundance based on laser Intensity and smart gain: Low. Scale bar: 20  $\mu$ m.

---

### SUPPORT

SUPPORT@GENUINBIOTECH.COM  
TEL: +1-540-855-7041

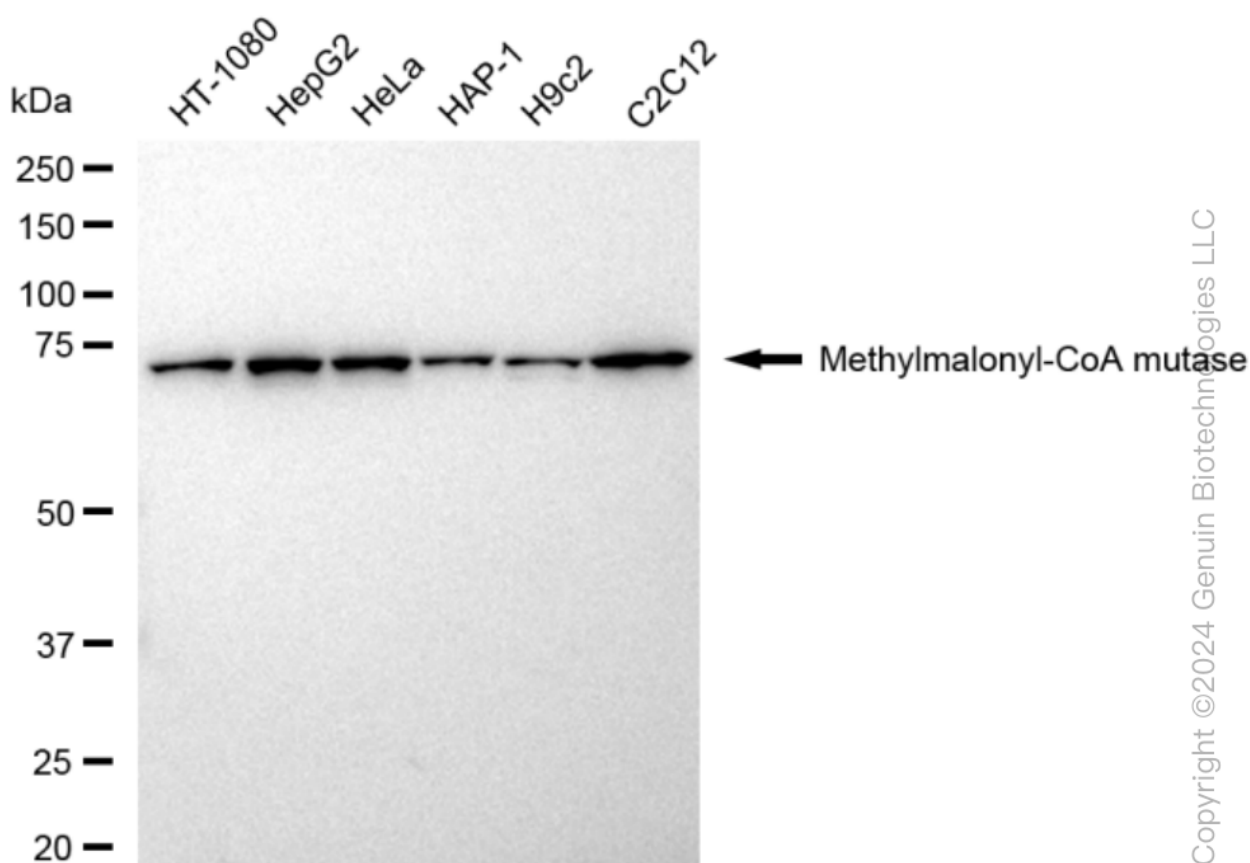
### ORDERS

SALES@GENUINBIOTECH.COM  
FAX: +1-540-855-7041

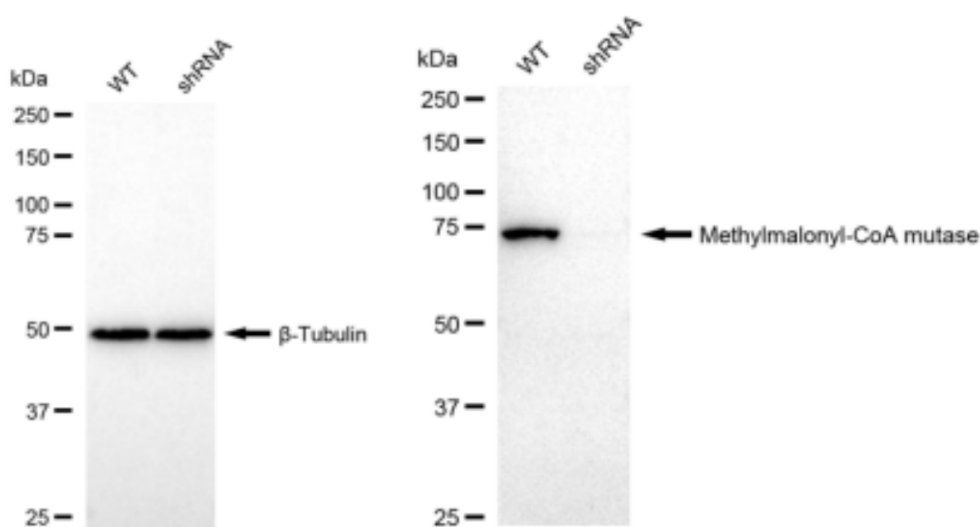
[WWW.GENUINBIOTECH.COM](http://WWW.GENUINBIOTECH.COM)

## KD-Validated Anti-Methylmalonyl-CoA mutase Recombinant Rabbit Monoclonal Antibody

PAGE 3



Western blotting analysis using anti-Methylmalonyl-CoA mutase antibody (Cat#61805). Total cell lysates (30  $\mu$ g) from various cell lines were loaded and separated by SDS-PAGE. The blot was incubated with anti-Methylmalonyl-CoA mutase antibody (Cat#61805, 1:5,000) and HRP-conjugated goat anti-rabbit secondary antibody (Cat#201, 1:20,000) respectively. Image was developed using FeQ™ ECL Substrate Kit (Cat#226).



### SUPPORT

SUPPORT@GENUINBIOTECH.COM  
TEL: +1-540-855-7041

### ORDERS

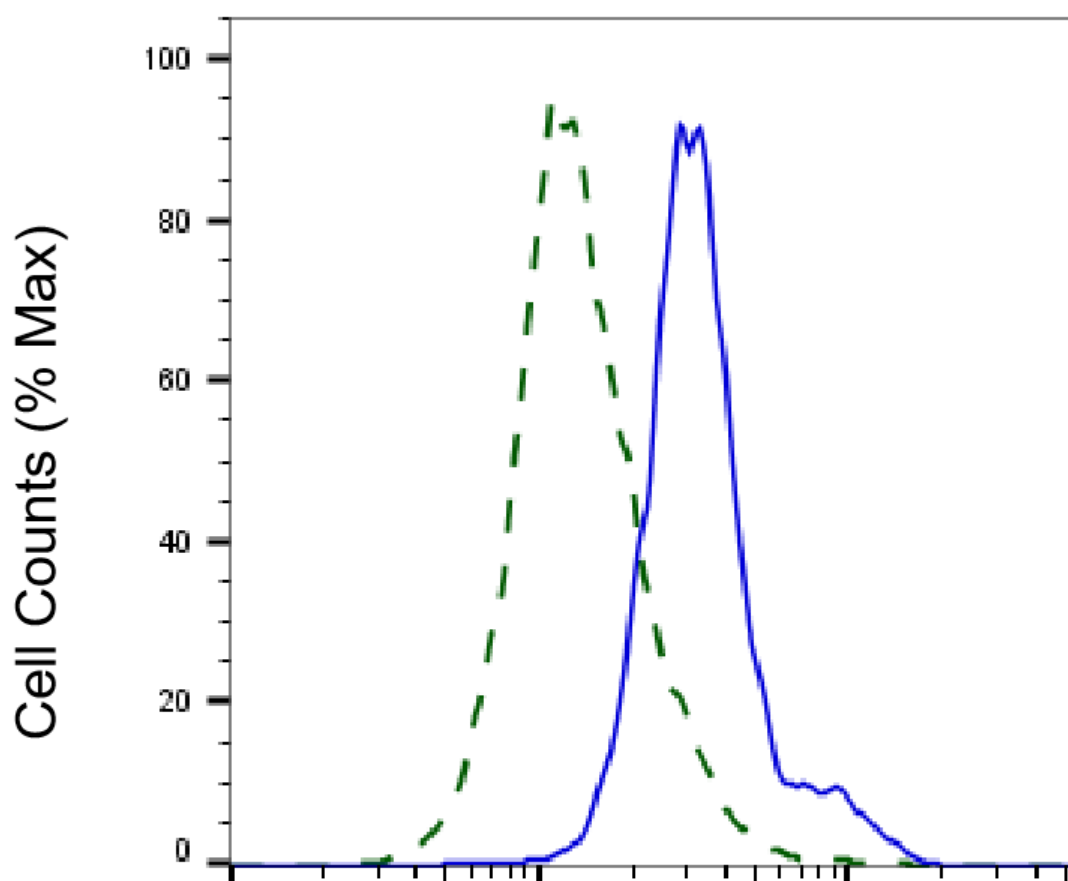
SALES@GENUINBIOTECH.COM  
FAX: +1-540-855-7041

WWW.GENUINBIOTECH.COM

## KD-Validated Anti-Methylmalonyl-CoA mutase Recombinant Rabbit Monoclonal Antibody

PAGE 4

Western blotting analysis using anti-Methylmalonyl-CoA mutase antibody (Cat#61805). Methylmalonyl-CoA mutase expression in wild type (WT) and Methylmalonyl-CoA mutase shRNA knockdown (KD) HeLa cells with 30 µg of total cell lysates.  $\beta$ -Tubulin serves as a loading control. The blot was incubated with anti-Methylmalonyl-CoA mutase antibody (Cat#61805, 1:5,000) and HRP-conjugated goat anti-rabbit secondary antibody (Cat#201, 1:20,000) respectively. Image was developed using FeQ™ ECL Substrate Kit (Cat#226).



Copyright ©2025 Genuin Biotechnologies LLC

## Methylmalonyl-CoA mutase-Alexa Fluor® 647

Validation of Methylmalonyl-CoA mutase knockdown using flow cytometry. Wild-type(WT, Blue) and knockdown(KD, Green) HeLa cells were stained with anti-Methylmalonyl-CoA mutase antibody (Cat#61805, 1:2,000) and analyzed using BD flow cytometer.

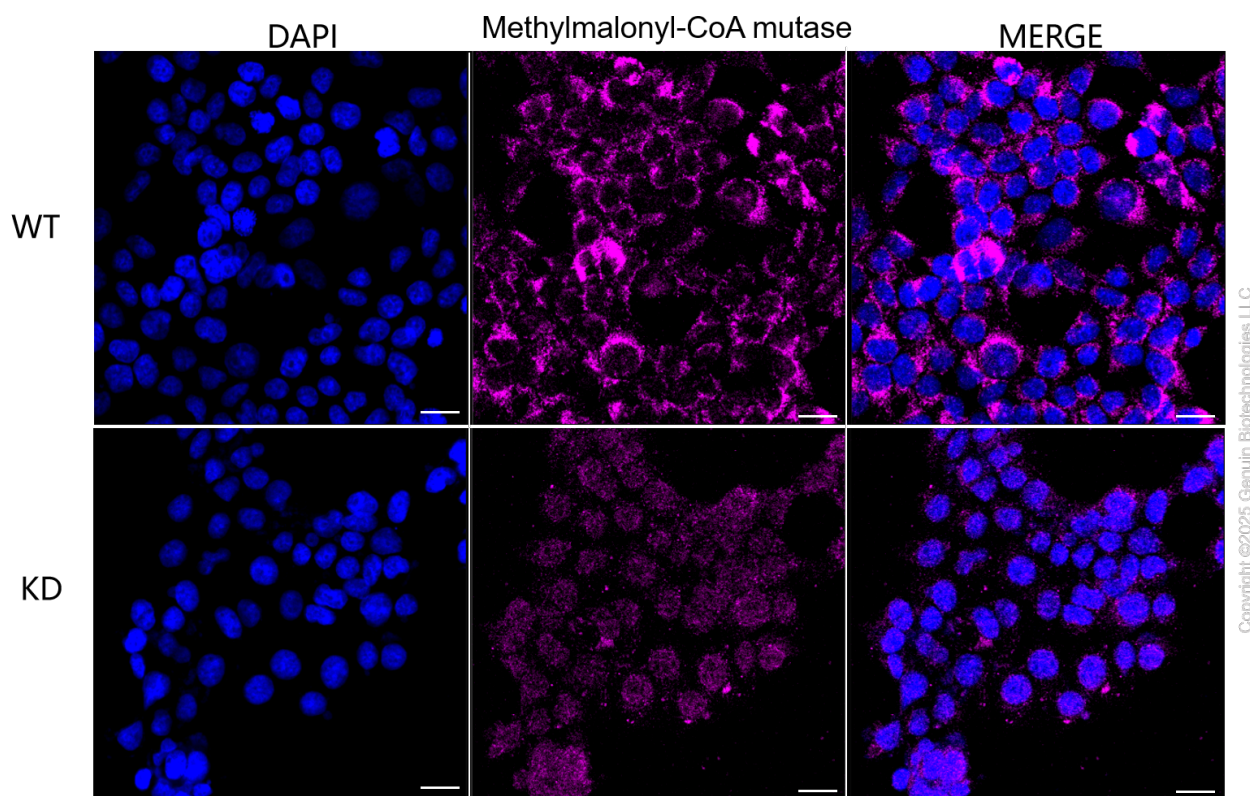
### SUPPORT

SUPPORT@GENUINBIOTECH.COM  
TEL: +1-540-855-7041

### ORDERS

SALES@GENUINBIOTECH.COM  
FAX: +1-540-855-7041

WWW.GENUINBIOTECH.COM



Immunocytochemical staining of HeLa cells using anti-Methylmalonyl-CoA mutase antibody (Cat#61805, 1:1,000), Top panel: wild-type (WT); Bottom panel: Methylmalonyl-CoA mutase shRNA knockdown (KD). Nuclei were stained blue with DAPI; Methylmalonyl-CoA mutase was stained magenta with Alexa Fluor® 647. Scale bar, 20  $\mu$ m.