

KD-Validated Anti-Methylmalonyl-CoA mutase Recombinant Rabbit Monoclonal Antibody



Catalog #: 61806

Aliases

MMUT; Methylmalonyl-CoA Mutase; MCM; MUT; Methylmalonyl-CoA Mutase, Mitochondrial; Methylmalonyl Coenzyme A Mutase; Methylmalonyl-CoA Isomerase; EC 5.4.99.2; Methylmalonyl-CoA Mutase Variant C.613_615delGAA; Methylmalonyl-CoA Mutase Variant C.1495G>A; Methylmalonyl-CoA Mutase Variant C.2011A>G; Methylmalonyl-CoA Mutase Variant C.2150G>T; Methylmalonyl-CoA Mutase Variant C.322C>T; Methylmalonyl-CoA Mutase Variant C.636G>A; Methylmalonyl-CoA Mutase Variant C.643G>A; Methylmalonyl-CoA Mutase C.*192delA; Methylmalonyl-CoA Mutase C.*51C>G; Mutant Methylmalonyl CoA Mutase

Background

Gene Name: MMUT

NCBI Gene Entry: [4594](#)

UniProt Entry: [P22033](#)

Application Information

Molecular Weight: Predicted, 83 kDa, observed, 78 kDa

Clonality: Rabbit monoclonal antibody

Clone ID: 23GB4555

Species Reactivity: Human, mouse, rat

Applications Tested: Western blotting (WB), flow cytometry (FCM), immunocytochemistry (IC)

Immunogen

A synthesized peptide derived from human MMUT

Isotype

Rabbit IgG

Storage Buffer

Supplied in PBS (pH 7.4) containing 50% glycerol, and 0.02% sodium azide.

Storage

Store at -20 °C for one year.

Recommended Dilutions

Western Blotting (WB): 1:1,000-1:5,000

Flow Cytometry (FCM): 1:2,000

SUPPORT

SUPPORT@GENUINBIOTECH.COM
TEL: +1-540-855-7041

ORDERS

SALES@GENUINBIOTECH.COM
FAX: +1-540-855-7041

WWW.GENUINBIOTECH.COM

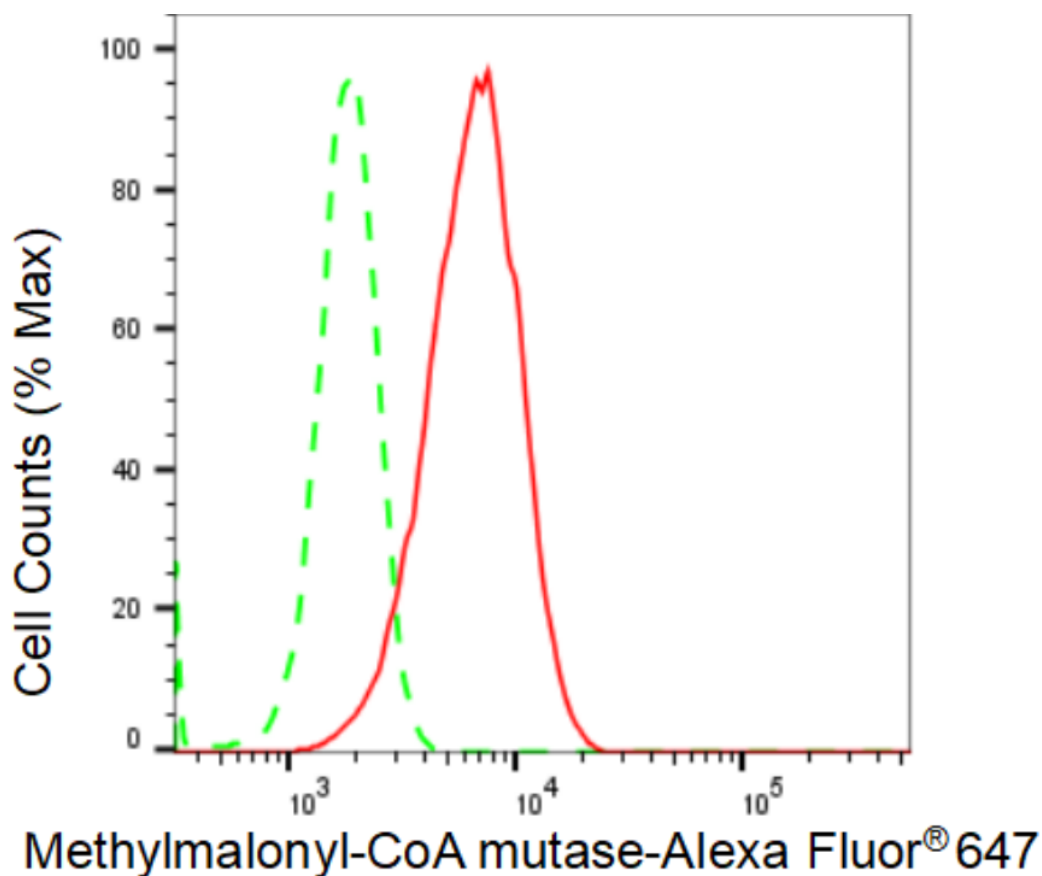
KD-Validated Anti-Methylmalonyl-CoA mutase Recombinant Rabbit Monoclonal Antibody

PAGE 2

Immunocytochemistry (IC): 1:100-1:1,000

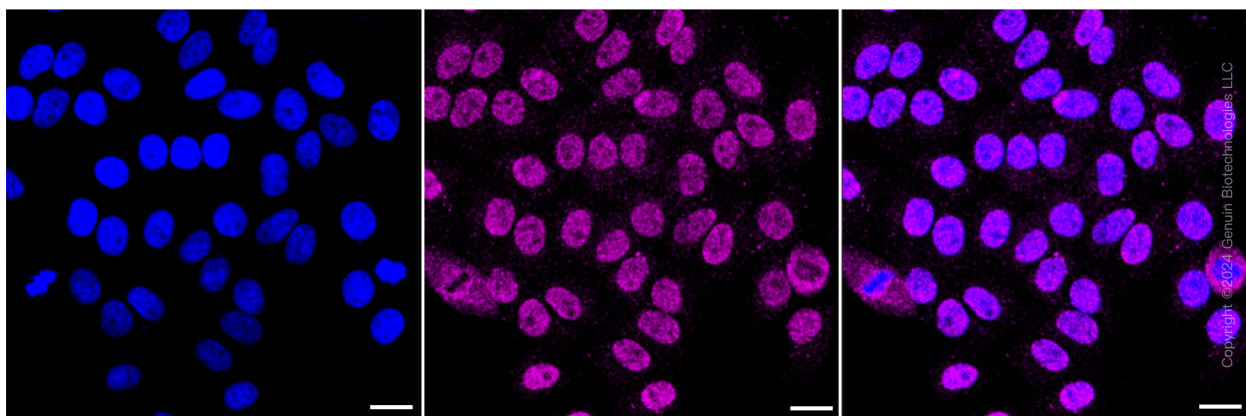
Note: This product is for research use only.

Validation Data



Copyright ©2024 Genuin Biotechnologies LLC

Flow cytometric analysis of Methylmalonyl-CoA mutase expression in HepG2 cells using Methylmalonyl-CoA mutase antibody (Cat#61806, 1:2,000). Green, isotype control; red, Methylmalonyl-CoA mutase.



SUPPORT

SUPPORT@GENUINBIOTECH.COM
TEL: +1-540-855-7041

ORDERS

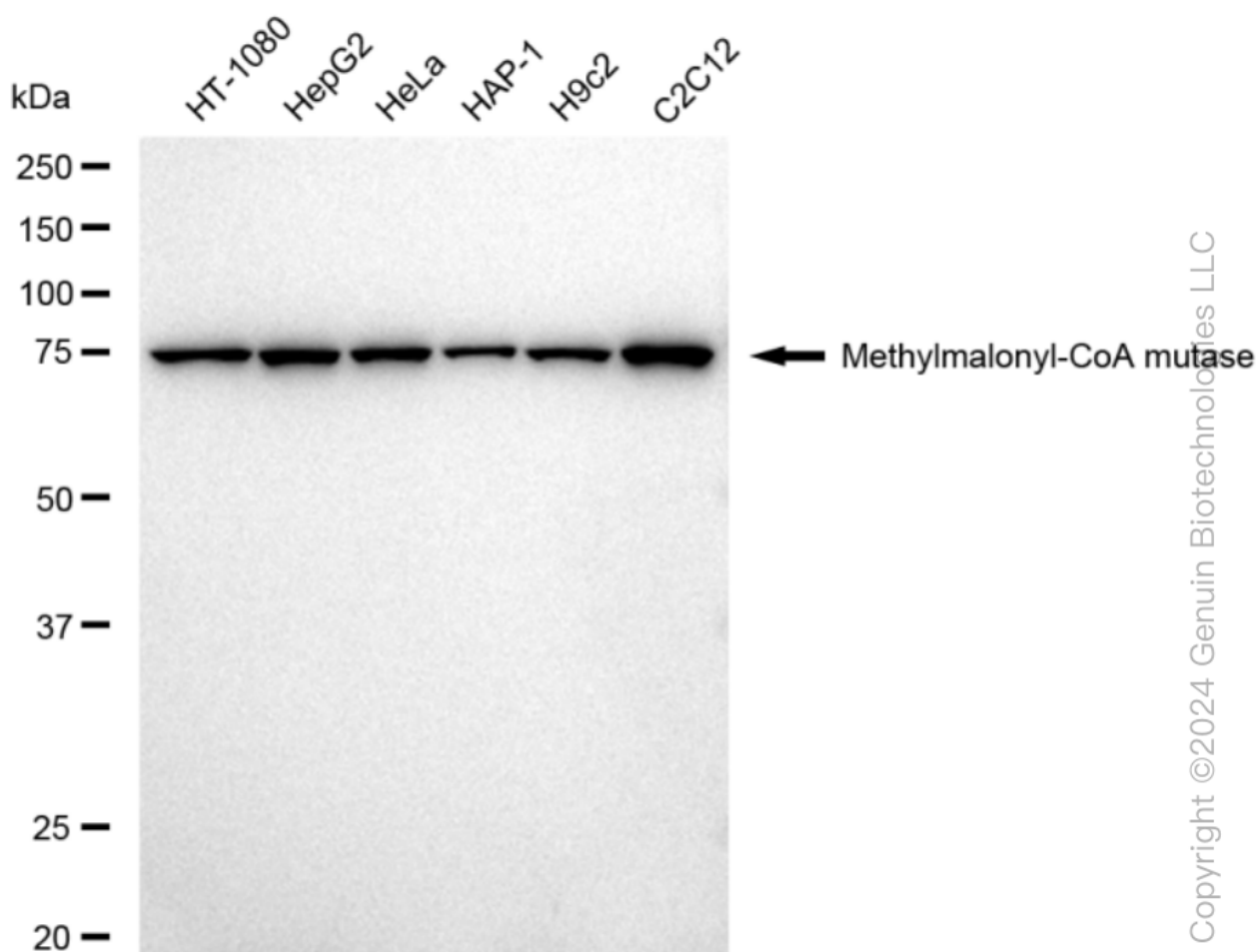
SALES@GENUINBIOTECH.COM
FAX: +1-540-855-7041

WWW.GENUINBIOTECH.COM

KD-Validated Anti-Methylmalonyl-CoA mutase Recombinant Rabbit Monoclonal Antibody

PAGE 3

Immunocytochemical staining of HepG2 cells with Methylmalonyl-CoA mutase antibody (Cat#61806, 1:1,000). Nuclei were stained blue with DAPI; Methylmalonyl-CoA mutase was stained magenta with Alexa Fluor® 647. Images were taken using Leica stellaris 5. Protein abundance based on laser Intensity and smart gain: Very Low. Scale bar: 20 μ m.



Western blotting analysis using anti-Methylmalonyl-CoA mutase antibody (Cat#61806). Total cell lysates (30 μ g) from various cell lines were loaded and separated by SDS-PAGE. The blot was incubated with anti-Methylmalonyl-CoA mutase antibody (Cat#61806, 1:5,000) and HRP-conjugated goat anti-rabbit secondary antibody (Cat#201, 1:20,000) respectively. Image was developed using FeQ™ ECL Substrate Kit (Cat#226).

SUPPORT

SUPPORT@GENUINBIOTECH.COM
TEL: +1-540-855-7041

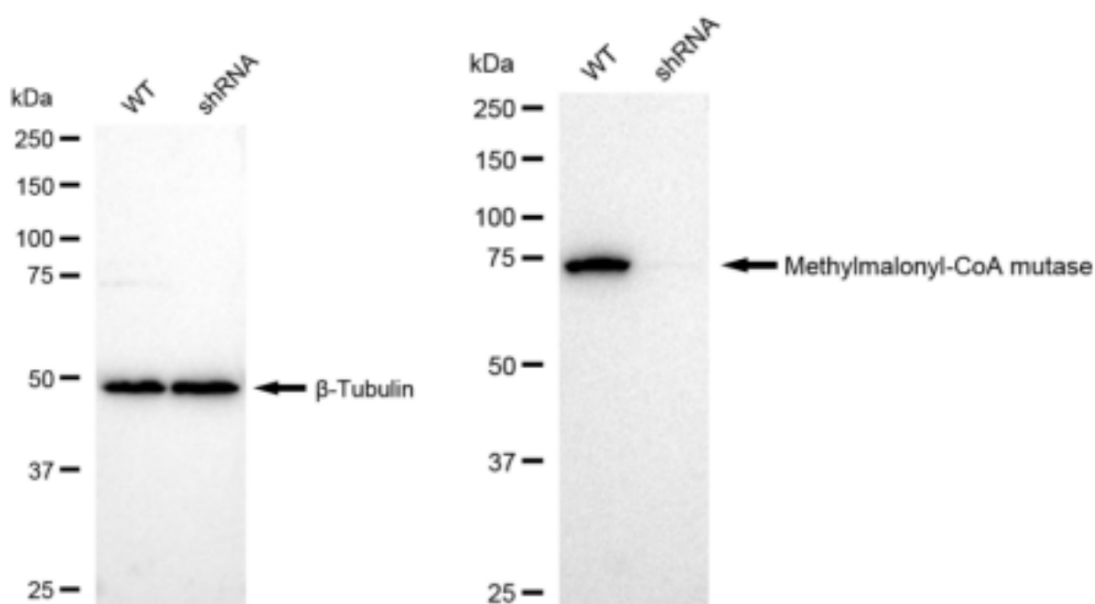
ORDERS

SALES@GENUINBIOTECH.COM
FAX: +1-540-855-7041

WWW.GENUINBIOTECH.COM

KD-Validated Anti-Methylmalonyl-CoA mutase Recombinant Rabbit Monoclonal Antibody

PAGE 4



Copyright ©2024 Genuin Biotechnologies LLC

Western blotting analysis using anti-Methylmalonyl-CoA mutase antibody (Cat#61806). Methylmalonyl-CoA mutase expression in wild type (WT) and Methylmalonyl-CoA mutase shRNA knockdown (KD) HeLa cells with 30 μ g of total cell lysates. β -Tubulin serves as a loading control. The blot was incubated with anti-Methylmalonyl-CoA mutase antibody (Cat#61806, 1:5,000) and HRP-conjugated goat anti-rabbit secondary antibody (Cat#201, 1:20,000) respectively. Image was developed using FeQ™ ECL Substrate Kit (Cat#226).

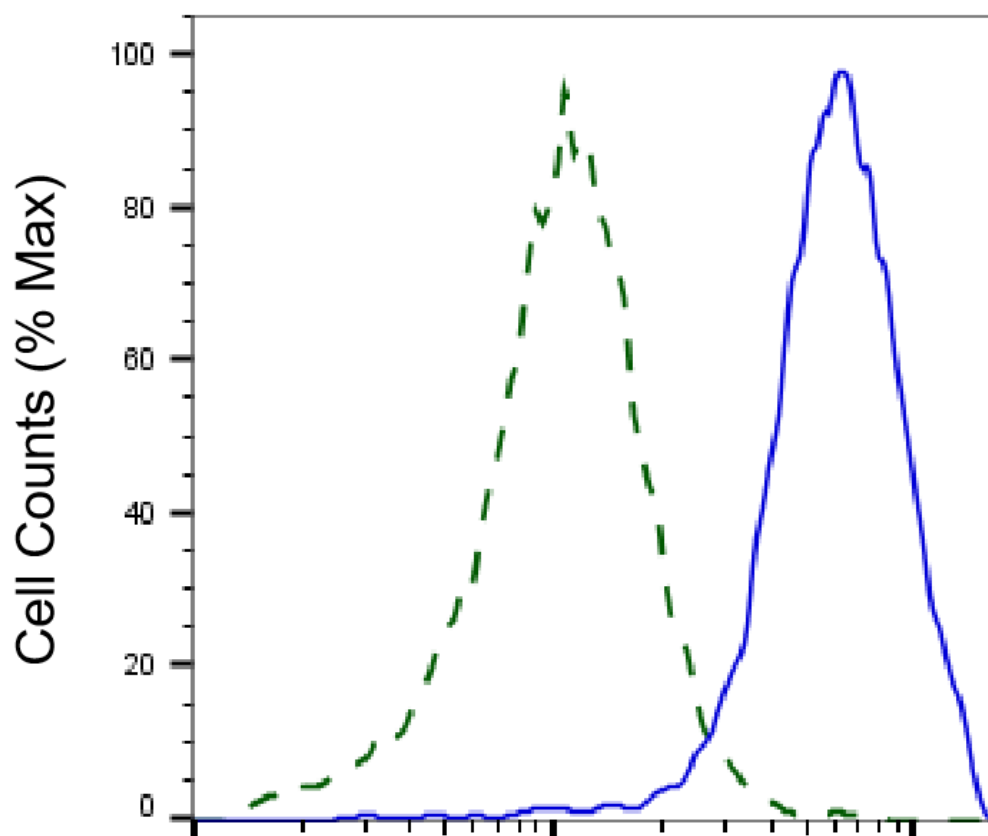
SUPPORT

SUPPORT@GENUINBIOTECH.COM
TEL: +1-540-855-7041

ORDERS

SALES@GENUINBIOTECH.COM
FAX: +1-540-855-7041

WWW.GENUINBIOTECH.COM



Copyright ©2025 Genuin Biotechnologies LLC

Methylmalonyl-CoA mutase-Alexa Fluor® 647

Validation of Methylmalonyl-CoA mutase knockdown using flow cytometry. Wild-type(WT, Blue) and knockdown(KD, Green) HeLa cells were stained with anti-Methylmalonyl-CoA mutase antibody (Cat#61806, 1:2,000) and analyzed using BD flow cytometer.