

KD-Validated Anti-Methylthioadenosine phosphorylase Recombinant Rabbit Monoclonal



Catalog #: 61807

Aliases

MTAP; Methylthioadenosine Phosphorylase; MSAP; S-Methyl-5'-Thioadenosine Phosphorylase; 5'-Methylthioadenosine Phosphorylase; MTA Phosphorylase; MTAPase; C86fus; Epididymis Secretory Sperm Binding Protein; Epididymis Luminal Protein 249; MeSAdo Phosphorylase; EC 2.4.2.28; HEL-249; DMSMFH; C86FUS; DMSFH; LGMBF; BDMF

Background

Gene Name: MTAP

NCBI Gene Entry: [4507](#)

UniProt Entry: [Q13126](#)

Application Information

Molecular Weight: Predicted, 31 kDa, observed, 29 kDa

Clonality: Rabbit monoclonal antibody

Clone ID: 23GB4560

Species Reactivity: Human, mouse, rat

Applications Tested: Western blotting (WB), flow cytometry (FCM), immunocytochemistry (IC)

Immunogen

A synthesized peptide derived from human MTAP

Isotype

Rabbit IgG

Storage Buffer

Supplied in PBS (pH 7.4) containing 50% glycerol, and 0.02% sodium azide.

Storage

Store at -20 °C for one year.

Recommended Dilutions

Western Blotting (WB): 1:1,000-1:5,000

Flow Cytometry (FCM): 1:2,000

Immunocytochemistry (IC): 1:100-1:1,000

SUPPORT

SUPPORT@GENUINBIOTECH.COM
TEL: +1-540-855-7041

ORDERS

SALES@GENUINBIOTECH.COM
FAX: +1-540-855-7041

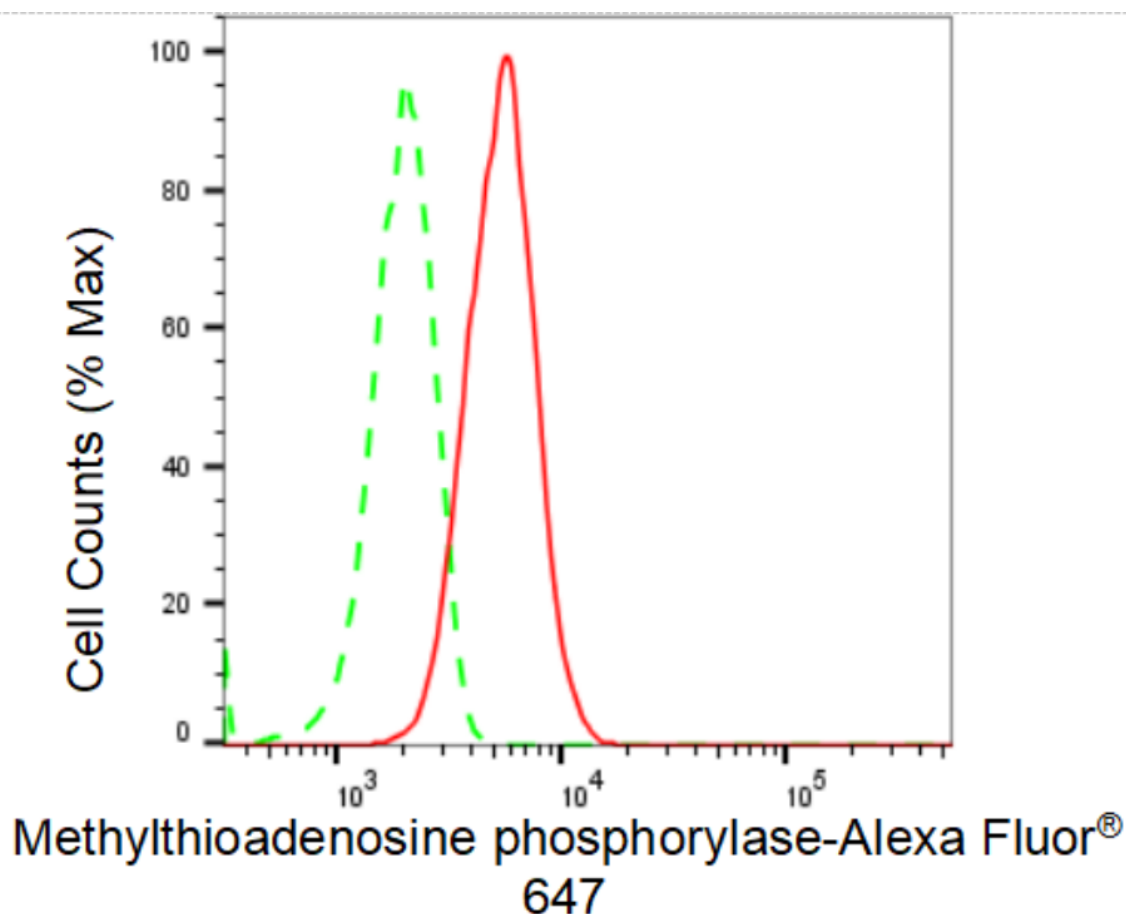
WWW.GENUINBIOTECH.COM

KD-Validated Anti-Methylthioadenosine phosphorylase Recombinant Rabbit Monoclonal

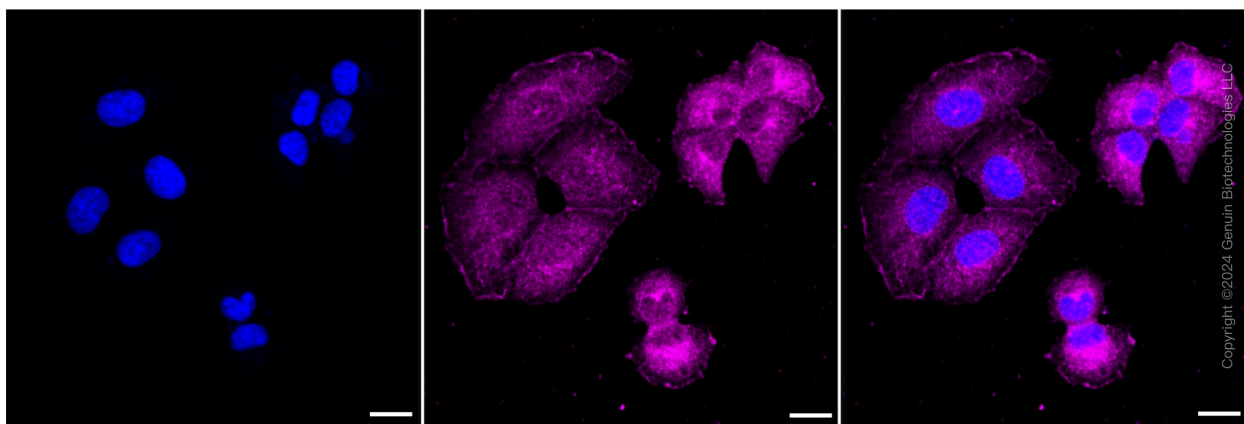
PAGE 2

Note: This product is for research use only.

Validation Data



Flow cytometric analysis of Methylthioadenosine phosphorylase expression in HT-1080 cells using Methylthioadenosine phosphorylase antibody (Cat#61807, 1:2,000). Green, isotype control; red, Methylthioadenosine phosphorylase.



Immunocytochemical staining of HT-1080 cells with Methylthioadenosine phosphorylase

SUPPORT

SUPPORT@GENUINBIOTECH.COM
TEL: +1-540-855-7041

ORDERS

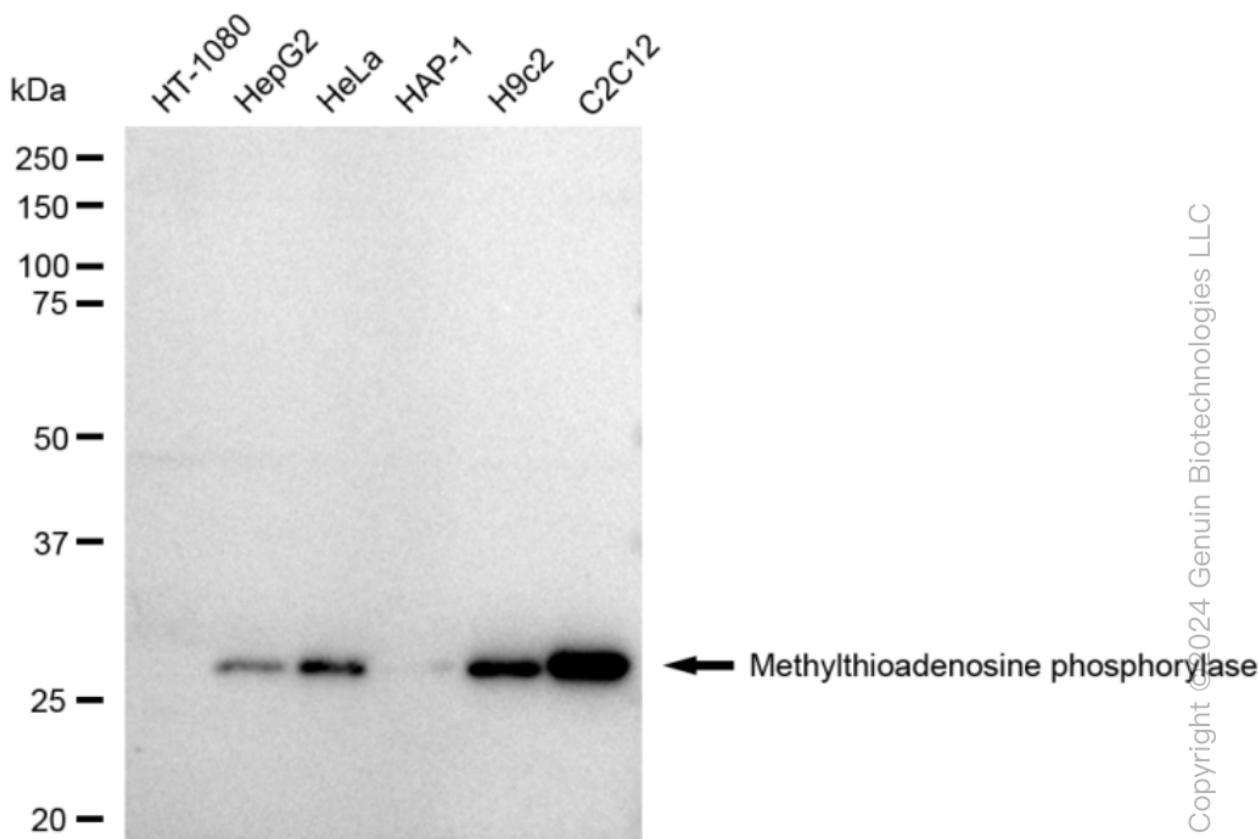
SALES@GENUINBIOTECH.COM
FAX: +1-540-855-7041

WWW.GENUINBIOTECH.COM

KD-Validated Anti-Methylthioadenosine phosphorylase Recombinant Rabbit Monoclonal

PAGE 3

antibody (Cat#61807, 1:1,000). Nuclei were stained blue with DAPI; Methylthioadenosine phosphorylase was stained magenta with Alexa Fluor® 647. Images were taken using Leica stellaris 5. Protein abundance based on laser Intensity and smart gain: Medium. Scale bar: 20 μ m.



Western blotting analysis using anti-Methylthioadenosine phosphorylase antibody (Cat#61807). Total cell lysates (30 μ g) from various cell lines were loaded and separated by SDS-PAGE. The blot was incubated with anti-Methylthioadenosine phosphorylase antibody (Cat#61807, 1:5,000) and HRP-conjugated goat anti-rabbit secondary antibody (Cat#201, 1:20,000) respectively. Image was developed using FeQ™ ECL Substrate Kit (Cat#226).

SUPPORT

SUPPORT@GENUINBIOTECH.COM
TEL: +1-540-855-7041

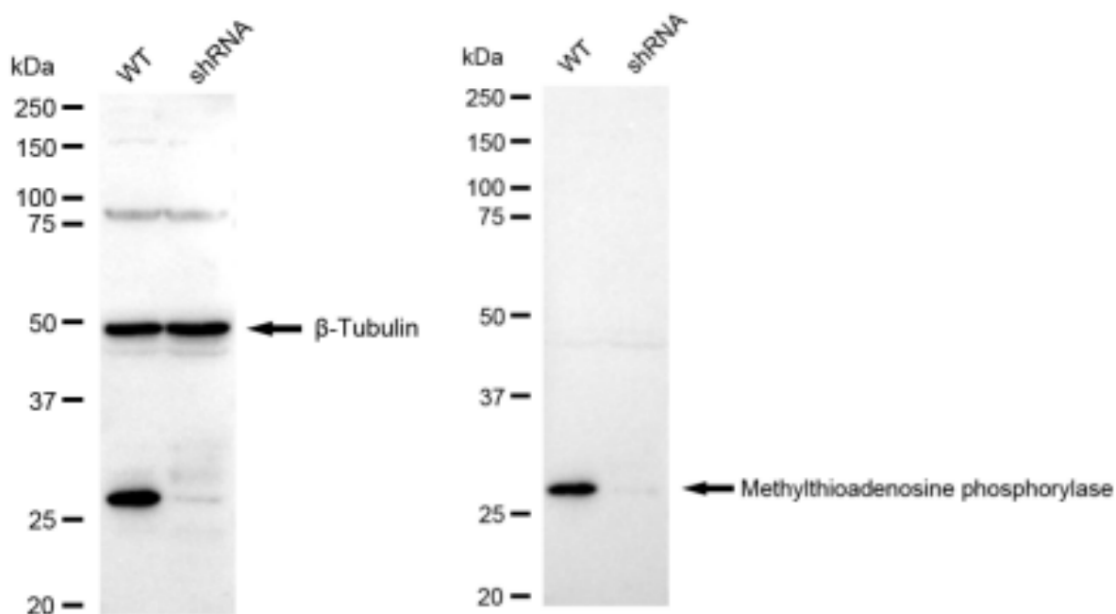
ORDERS

SALES@GENUINBIOTECH.COM
FAX: +1-540-855-7041

WWW.GENUINBIOTECH.COM

KD-Validated Anti-Methylthioadenosine phosphorylase Recombinant Rabbit Monoclonal

PAGE 4



Western blotting analysis using anti-Methylthioadenosine phosphorylase antibody (Cat#61807). Methylthioadenosine phosphorylase expression in wild type (WT) and Methylthioadenosine phosphorylase shRNA knockdown (KD) HeLa cells with 30 μ g of total cell lysates. β -Tubulin serves as a loading control. The blot was incubated with anti-Methylthioadenosine phosphorylase antibody (Cat#61807, 1:5,000) and HRP-conjugated goat anti-rabbit secondary antibody (Cat#201, 1:20,000) respectively. Image was developed using FeQ™ ECL Substrate Kit (Cat#226).

SUPPORT

SUPPORT@GENUINBIOTECH.COM
TEL: +1-540-855-7041

ORDERS

SALES@GENUINBIOTECH.COM
FAX: +1-540-855-7041

WWW.GENUINBIOTECH.COM