

# KD-Validated Anti-Oxoglutarate receptor 1 Recombinant Rabbit Monoclonal Antibody



**Catalog #: 61810**

## Aliases

OXGR1; Oxoglutarate Receptor 1; P2RY15; P2Y15; Alpha-Ketoglutarate Receptor 1; 2-Oxoglutarate Receptor 1; GPR80; GPR99; AKGR; Oxoglutarate (Alpha-Ketoglutarate) Receptor 1; G Protein-Coupled Receptor 80; G-Protein Coupled Receptor 99; P2Y-Like Nucleotide Receptor; P2Y Purinoceptor 15; P2Y-Like GPCR; Seven Transmembrane Helix Receptor; G-Protein Coupled Receptor 80; CAON2

## Background

Gene Name: OXGR1

NCBI Gene Entry: [27199](#)

UniProt Entry: [Q96P68](#)

## Application Information

Molecular Weight: Predicted, 38 kDa, observed, 36 kDa

Clonality: Rabbit monoclonal antibody

Clone ID: 23GB4575

Species Reactivity: Human, mouse, rat

Applications Tested: Western blotting (WB), flow cytometry (FCM), immunocytochemistry (IC)

## Immunogen

A synthesized peptide derived from human OXGR1 / GPR99

## Isotype

Rabbit IgG

## Storage Buffer

Supplied in PBS (pH 7.4) containing 50% glycerol, and 0.02% sodium azide.

## Storage

Store at -20 °C for one year.

## Recommended Dilutions

Western Blotting (WB): 1:1,000-1:5,000

Flow Cytometry (FCM): 1:2,000

Immunocytochemistry (IC): 1:100-1:1,000

---

### SUPPORT

SUPPORT@GENUINBIOTECH.COM  
TEL: +1-540-855-7041

### ORDERS

SALES@GENUINBIOTECH.COM  
FAX: +1-540-855-7041

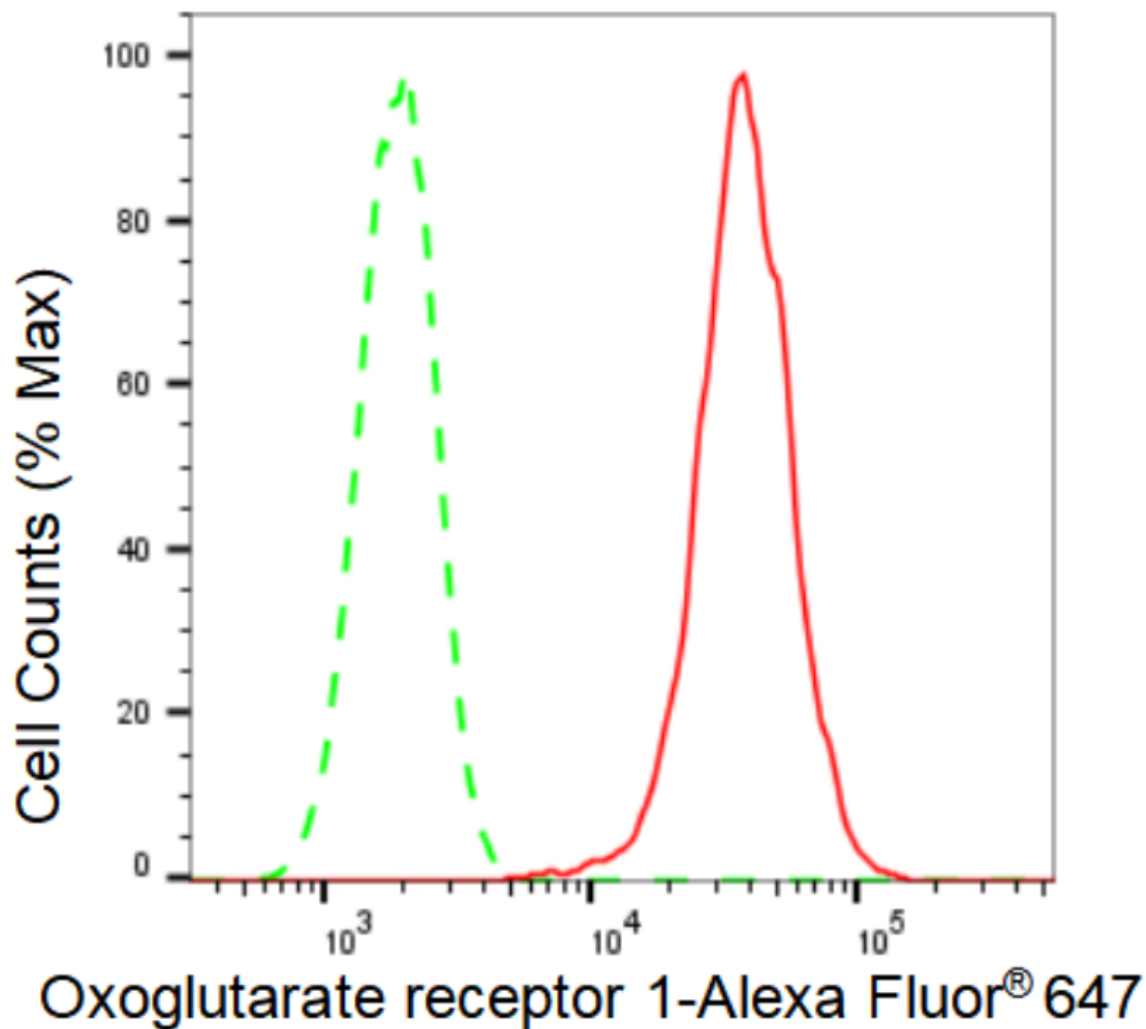
[WWW.GENUINBIOTECH.COM](http://WWW.GENUINBIOTECH.COM)

# KD-Validated Anti-Oxoglutarate receptor 1 Recombinant Rabbit Monoclonal Antibody

PAGE 2

**Note:** This product is for research use only.

## Validation Data



Copyright ©2024 Genuin Biotechnologies LLC

Flow cytometric analysis of Oxoglutarate receptor 1 expression in H9c2 cells using Oxoglutarate receptor 1 antibody (Cat#61810, 1:2,000). Green, isotype control; red, Oxoglutarate receptor 1.

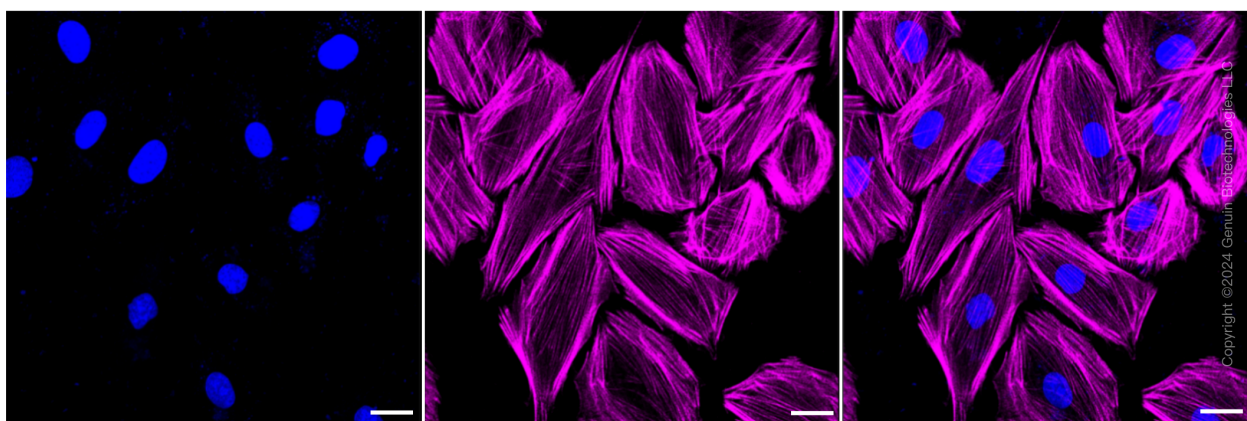
### SUPPORT

SUPPORT@GENUINBIOTECH.COM  
TEL: +1-540-855-7041

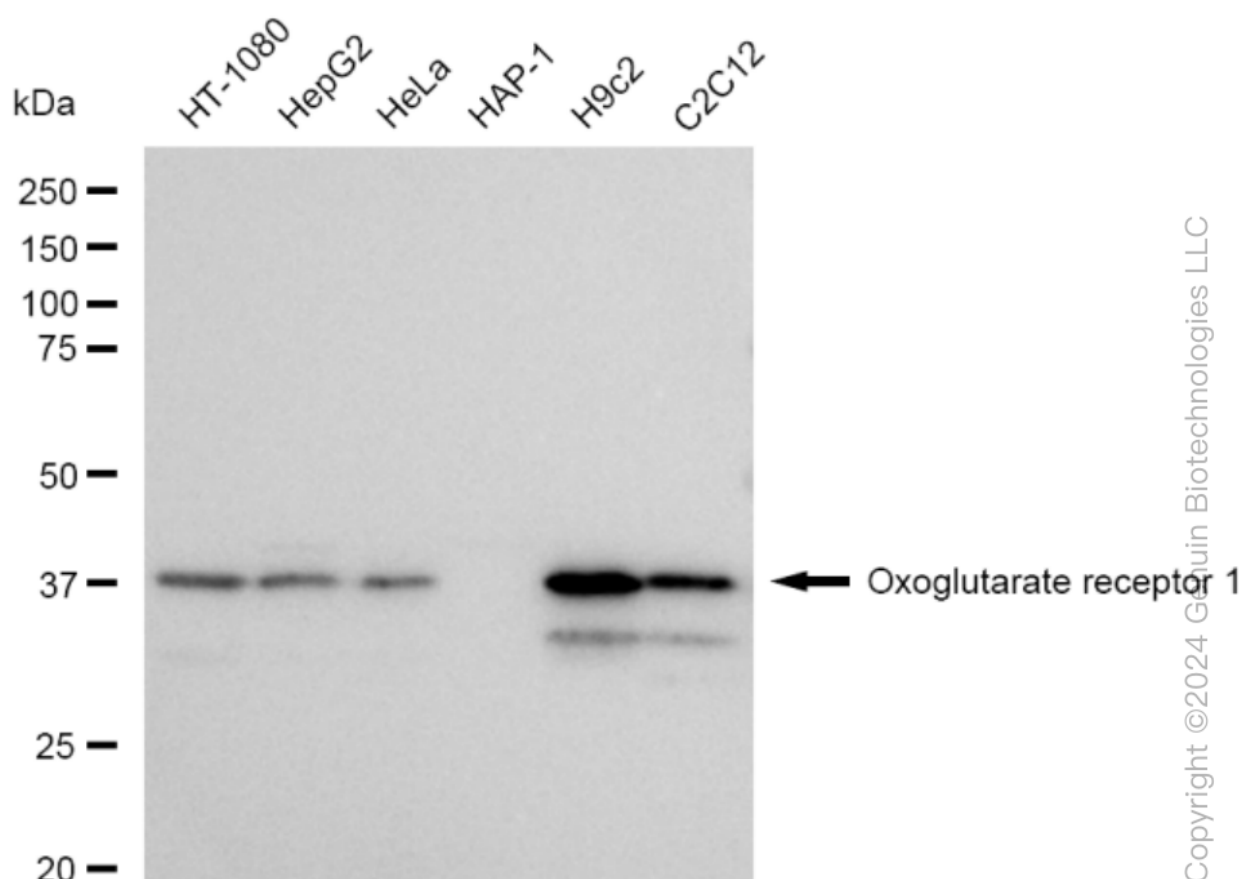
### ORDERS

SALES@GENUINBIOTECH.COM  
FAX: +1-540-855-7041

WWW.GENUINBIOTECH.COM



Immunocytochemical staining of H9C2 cells with Oxoglutarate receptor 1 antibody (Cat#61810, 1:1,000). Nuclei were stained blue with DAPI; Oxoglutarate receptor 1 was stained magenta with Alexa Fluor® 647. Images were taken using Leica stellaris 5. Protein abundance based on laser Intensity and smart gain: High. Scale bar: 20  $\mu$ m.

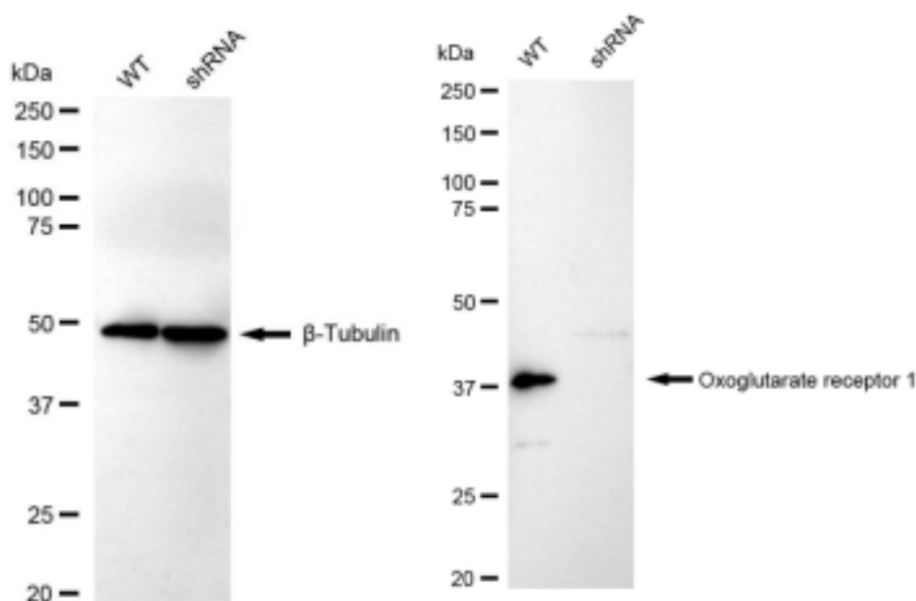


Western blotting analysis using anti-Oxoglutarate receptor 1 antibody (Cat#61810). Total cell lysates (30  $\mu$ g) from various cell lines were loaded and separated by SDS-PAGE. The blot was incubated with anti-Oxoglutarate receptor 1 antibody (Cat#61810, 1:5,000) and HRP-conjugated goat anti-rabbit secondary antibody (Cat#201, 1:20,000) respectively. Image was developed using

## KD-Validated Anti-Oxoglutarate receptor 1 Recombinant Rabbit Monoclonal Antibody

PAGE 4

FeQ™ ECL Substrate Kit (Cat#226).



Copyright ©2024 Genuin Biotechnologies LLC

Western blotting analysis using anti-Oxoglutarate receptor 1 antibody (Cat#61810). Oxoglutarate receptor 1 expression in wild type (WT) and Oxoglutarate receptor 1 shRNA knockdown (KD) HeLa cells with 30  $\mu$ g of total cell lysates.  $\beta$ -Tubulin serves as a loading control. The blot was incubated with anti-Oxoglutarate receptor 1 antibody (Cat#61810, 1:5,000) and HRP-conjugated goat anti-rabbit secondary antibody (Cat#201, 1:20,000) respectively. Image was developed using FeQ™ ECL Substrate Kit (Cat#226).

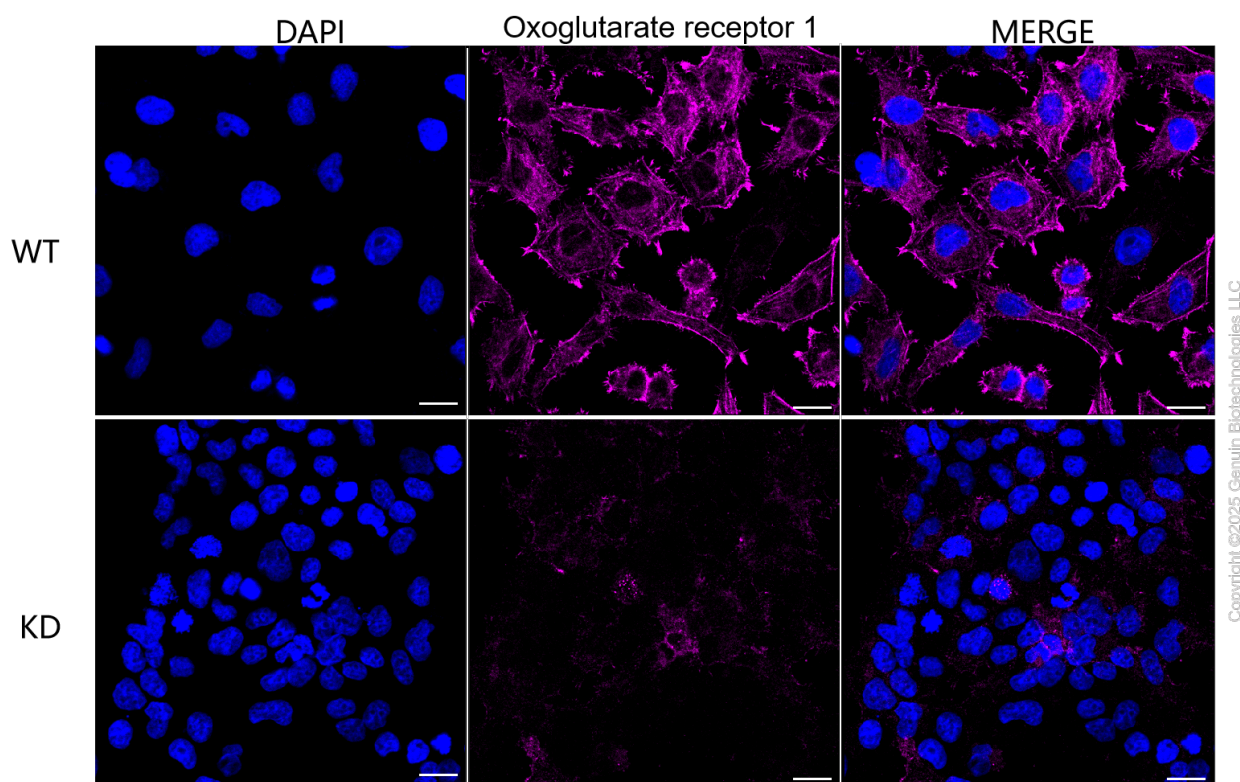
### SUPPORT

SUPPORT@GENUINBIOTECH.COM  
TEL: +1-540-855-7041

### ORDERS

SALES@GENUINBIOTECH.COM  
FAX: +1-540-855-7041

[WWW.GENUINBIOTECH.COM](http://WWW.GENUINBIOTECH.COM)



Immunocytochemical staining of HeLa cells using anti-Oxoglutarate receptor 1 antibody (Cat#61810, 1:1,000), Top panel: wild-type (WT); Bottom panel: Oxoglutarate receptor 1 shRNA knockdown (KD). Nuclei were stained blue with DAPI; Oxoglutarate receptor 1 was stained magenta with Alexa Fluor® 647. Scale bar, 20  $\mu$ m. Permeabilization: Triton.