

KD-Validated Anti-PKC delta + PKC theta Recombinant Rabbit Monoclonal Antibody



Catalog #: 61812

Aliases

PRKCD; Protein Kinase C Delta; Tyrosine-Protein Kinase PRKCD; Protein Kinase C Delta Type; EC 2.7.11.13; NPKC-Delta; PKCD; Protein Kinase C Delta VIII; Protein Kinase C, Delta; EC 2.7.10.2; EC 2.7.11; ALPS3; CVID9; MAY1; PRKCQ; Protein Kinase C Theta; Protein Kinase C Theta Type; EC 2.7.11.13; NPKC-Theta; PRKCT; Protein Kinase C, Theta; EC 2.7.11

Background

Gene Name: PRKCD/PRKCQ

NCBI Gene Entry: [5580/5588](#)

UniProt Entry: [Q05655/Q04759](#)

Application Information

Molecular Weight: Predicted, 78,82 kDa; observed, 73 kDa

Clonality: Rabbit monoclonal antibody

Clone ID: 23GB4585

Species Reactivity: Human, mouse, rat

Applications Tested: Western blotting (WB), flow cytometry (FCM), immunocytochemistry (IC)

Immunogen

A synthesized peptide derived from human PKC delta + PKC theta

Isotype

Rabbit IgG

Storage Buffer

Supplied in PBS (pH 7.4) containing 50% glycerol, and 0.02% sodium azide.

Storage

Store at -20 °C for one year.

Recommended Dilutions

Western Blotting (WB): 1:1,000-1:5,000

Flow Cytometry (FCM): 1:2,000

Immunocytochemistry (IC): 1:100-1:1,000

SUPPORT

SUPPORT@GENUINBIOTECH.COM
TEL: +1-540-855-7041

ORDERS

SALES@GENUINBIOTECH.COM
FAX: +1-540-855-7041

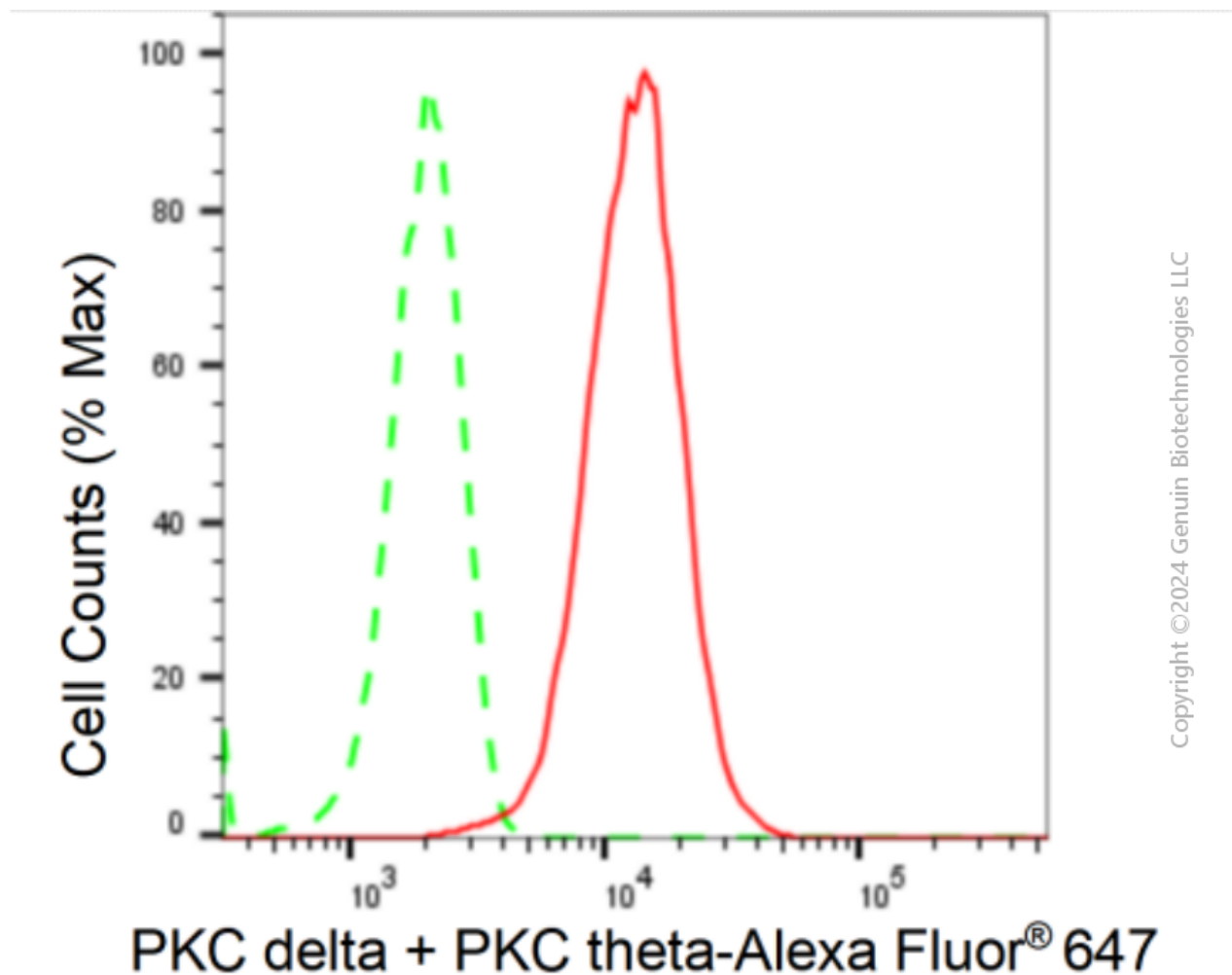
WWW.GENUINBIOTECH.COM

KD-Validated Anti-PKC delta + PKC theta Recombinant Rabbit Monoclonal Antibody

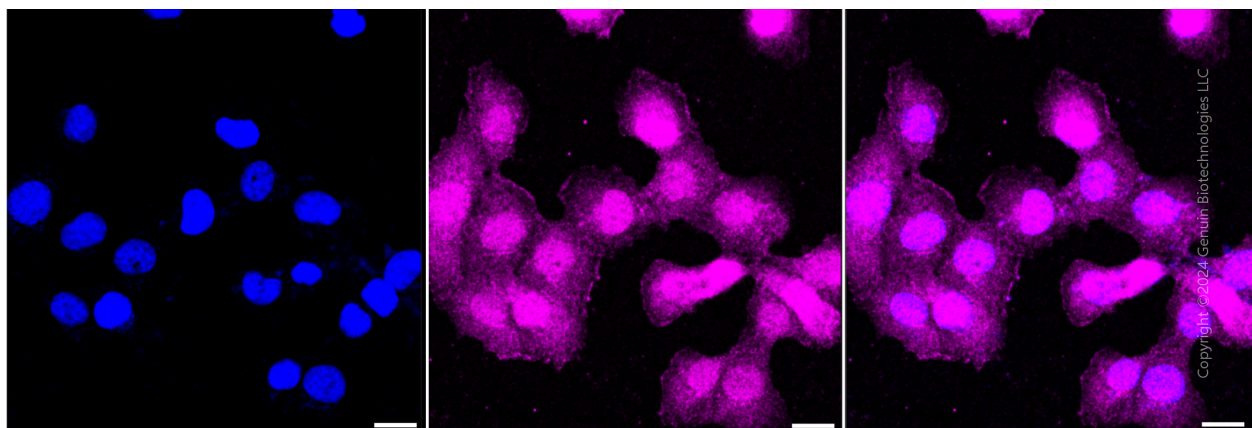
PAGE 2

Note: This product is for research use only.

Validation Data



Flow cytometric analysis of PKC delta + PKC theta expression in HT-1080 cells using PKC delta + PKC theta antibody (Cat#61812, 1:2,000). Green, isotype control; red, PKC delta + PKC theta.



SUPPORT

SUPPORT@GENUINBIOTECH.COM
TEL: +1-540-855-7041

ORDERS

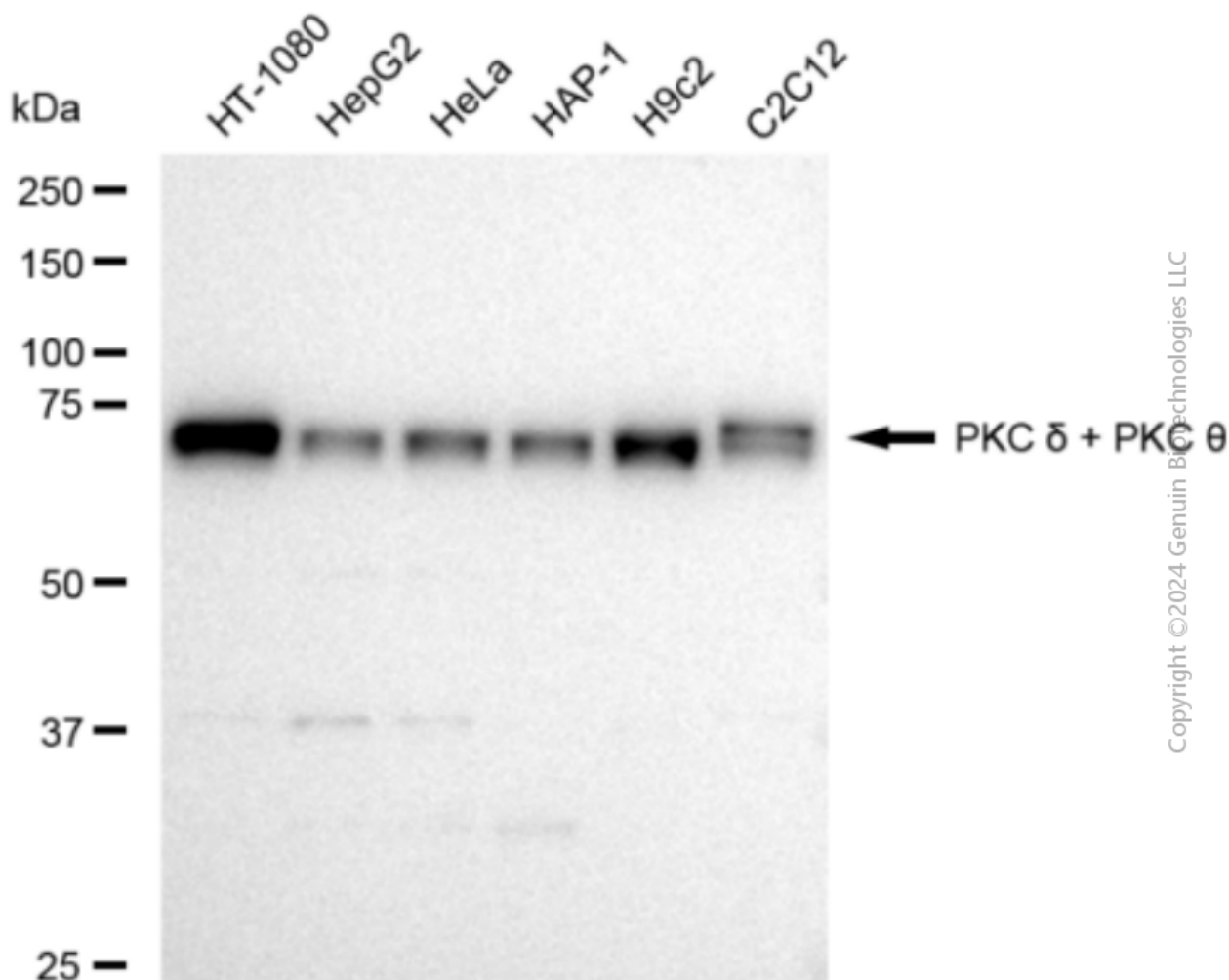
SALES@GENUINBIOTECH.COM
FAX: +1-540-855-7041

WWW.GENUINBIOTECH.COM

KD-Validated Anti-PKC delta + PKC theta Recombinant Rabbit Monoclonal Antibody

PAGE 3

Immunocytochemical staining of HT-1080 cells with PKC delta + PKC theta antibody (Cat#61812, 1:1,000). Nuclei were stained blue with DAPI; PKC delta + PKC theta was stained magenta with Alexa Fluor® 647. Images were taken using Leica stellaris 5. Protein abundance based on laser Intensity and smart gain: Medium. Scale bar: 20 µm.



Western blotting analysis using anti-PKC delta + PKC theta antibody (Cat#61812). Total cell lysates (30 µg) from various cell lines were loaded and separated by SDS-PAGE. The blot was incubated with anti-PKC delta + PKC theta antibody (Cat#61812, 1:5,000) and HRP-conjugated goat anti-rabbit secondary antibody (Cat#201, 1:20,000) respectively. Image was developed using FeQ™ ECL Substrate Kit (Cat#226).

SUPPORT

SUPPORT@GENUINBIOTECH.COM
TEL: +1-540-855-7041

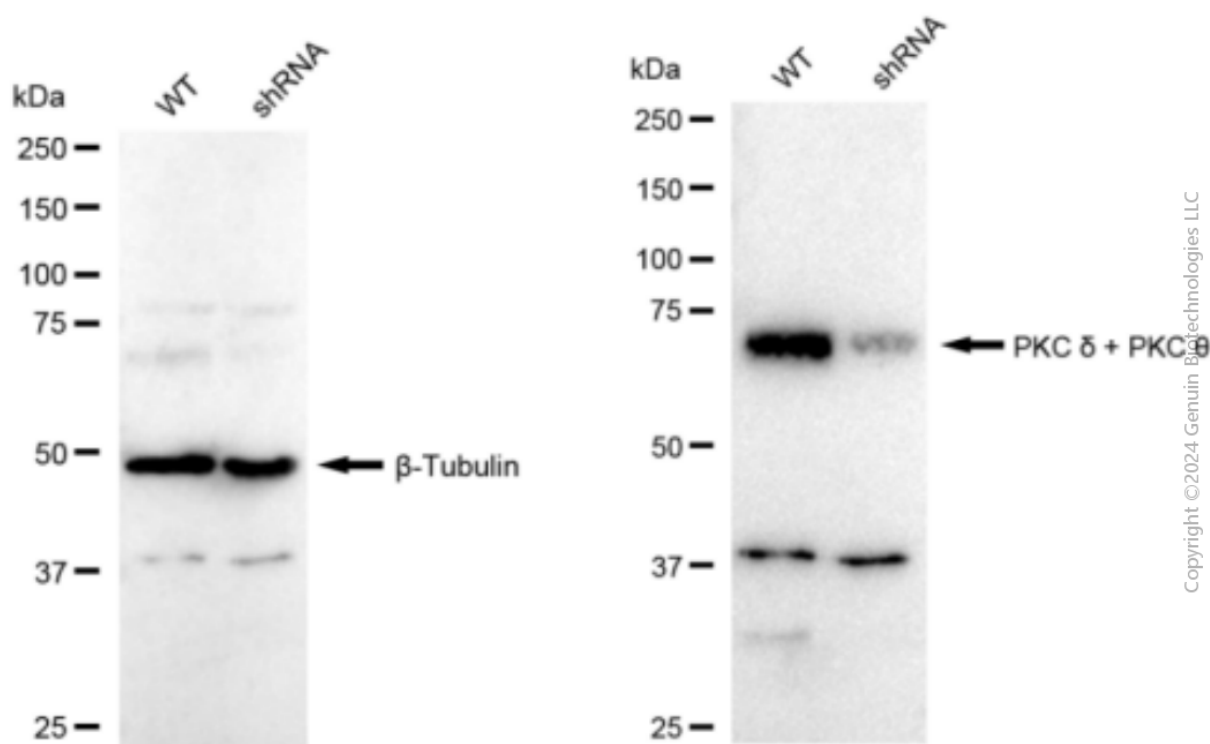
ORDERS

SALES@GENUINBIOTECH.COM
FAX: +1-540-855-7041

WWW.GENUINBIOTECH.COM

KD-Validated Anti-PKC delta + PKC theta Recombinant Rabbit Monoclonal Antibody

PAGE 4



Western blotting analysis using anti-PKC delta + PKC theta antibody (Cat#61812). PKC delta + PKC theta expression in wild type (WT) and PKC delta + PKC theta shRNA knockdown (KD) HeLa cells with 30 µg of total cell lysates. β-Tubulin serves as a loading control. The blot was incubated with anti-PKC delta + PKC theta antibody (Cat#61812, 1:5,000) and HRP-conjugated goat anti-rabbit secondary antibody (Cat#201, 1:20,000) respectively. Image was developed using FeQ™ ECL Substrate Kit (Cat#226).

SUPPORT

SUPPORT@GENUINBIOTECH.COM
TEL: +1-540-855-7041

ORDERS

SALES@GENUINBIOTECH.COM
FAX: +1-540-855-7041

WWW.GENUINBIOTECH.COM