

KD-Validated Anti-AGPS Rabbit Monoclonal Antibody



Catalog #: 61813

Aliases

AGPS; Alkylglycerone Phosphate Synthase; ALDHPSY; ADHAPS; ADAP-S; ADAS; ADPS; Alkylidihydroxyacetonephosphate Synthase, Peroxisomal; Aging-Associated Gene 5 Protein; Alkyl-DHAP Synthase; EC 2.5.1.26; Alkylglycerone-Phosphate Synthase; Aging-Associated Protein 5; RCDP3

Background

Gene Name: AGPS

NCBI Gene Entry: [8540](#)

UniProt Entry: [O00116](#)

Application Information

Molecular Weight: Predicted, 73 kDa, observed, 73 kDa

Clonality: Rabbit monoclonal antibody

Clone ID: 25GB3850

Species Reactivity: Human

Applications Tested: Western blotting (WB), flow cytometry (FCM), immunocytochemistry (IC)

Immunogen

Recombinant protein of human Alkyl-DHAP synthase

Isotype

Rabbit IgG

Storage Buffer

Supplied in PBS (pH 7.4) containing 50% glycerol, and 0.02% sodium azide.

Storage

Store at -20 °C for one year.

Recommended Dilutions

Western blotting (WB): 1:1,000-1:5,000

Flow Cytometry (FCM): 1:2,000

Immunocytochemistry (IC): 1:100-1:1,000

SUPPORT

SUPPORT@GENUINBIOTECH.COM
TEL: +1-540-855-7041

ORDERS

SALES@GENUINBIOTECH.COM
FAX: +1-540-855-7041

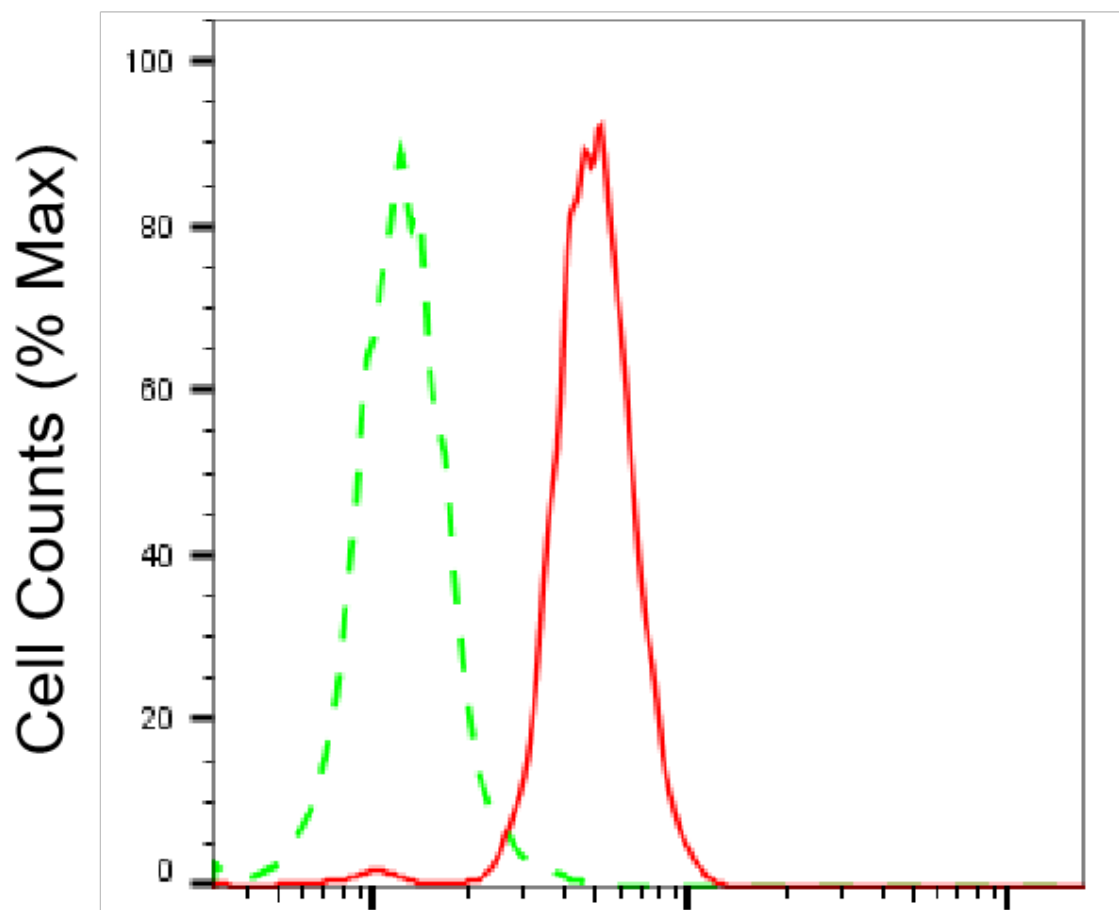
WWW.GENUINBIOTECH.COM

KD-Validated Anti-AGPS Rabbit Monoclonal Antibody

PAGE 2

Note: This product is for research use only.

Validation Data



Copyright ©2025 Genuin Biotechnologies LLC

Alkylglycerone phosphate synthase- Alexa Fluor® 647

Flow cytometric analysis of Alkylglycerone phosphate synthase expression in HeLa cells using anti-Alkylglycerone phosphate synthase antibody (Cat#61813, 1:2,000). Green, isotype control; red, Alkylglycerone phosphate synthase.

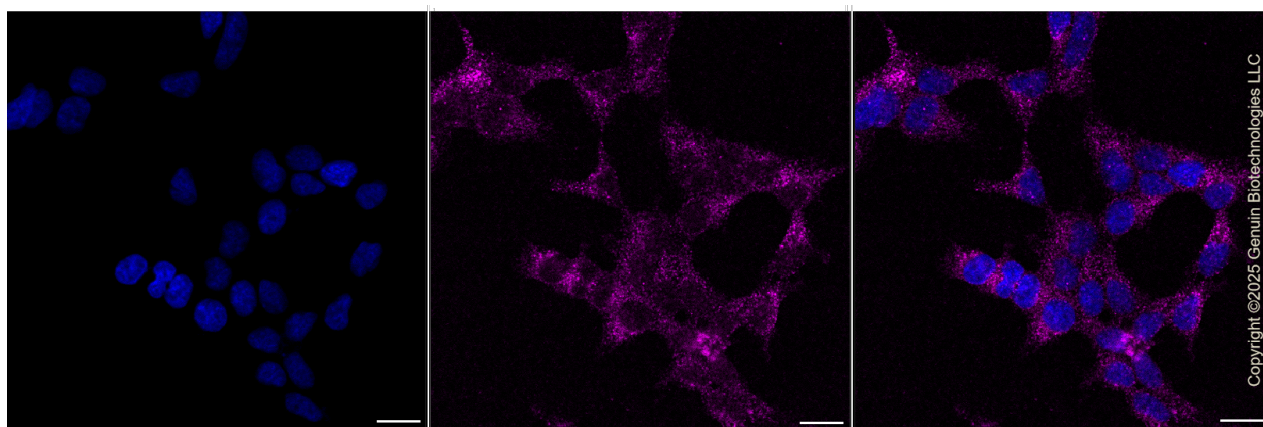
SUPPORT

SUPPORT@GENUINBIOTECH.COM
TEL: +1-540-855-7041

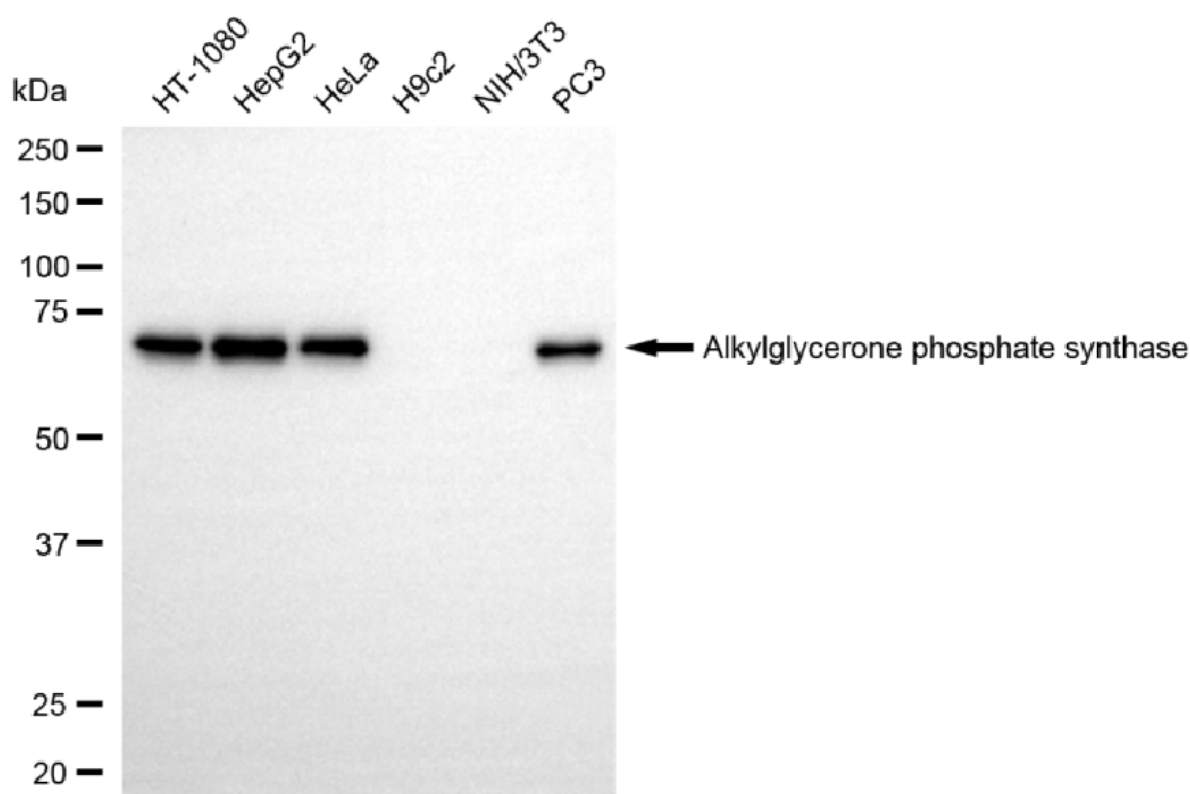
ORDERS

SALES@GENUINBIOTECH.COM
FAX: +1-540-855-7041

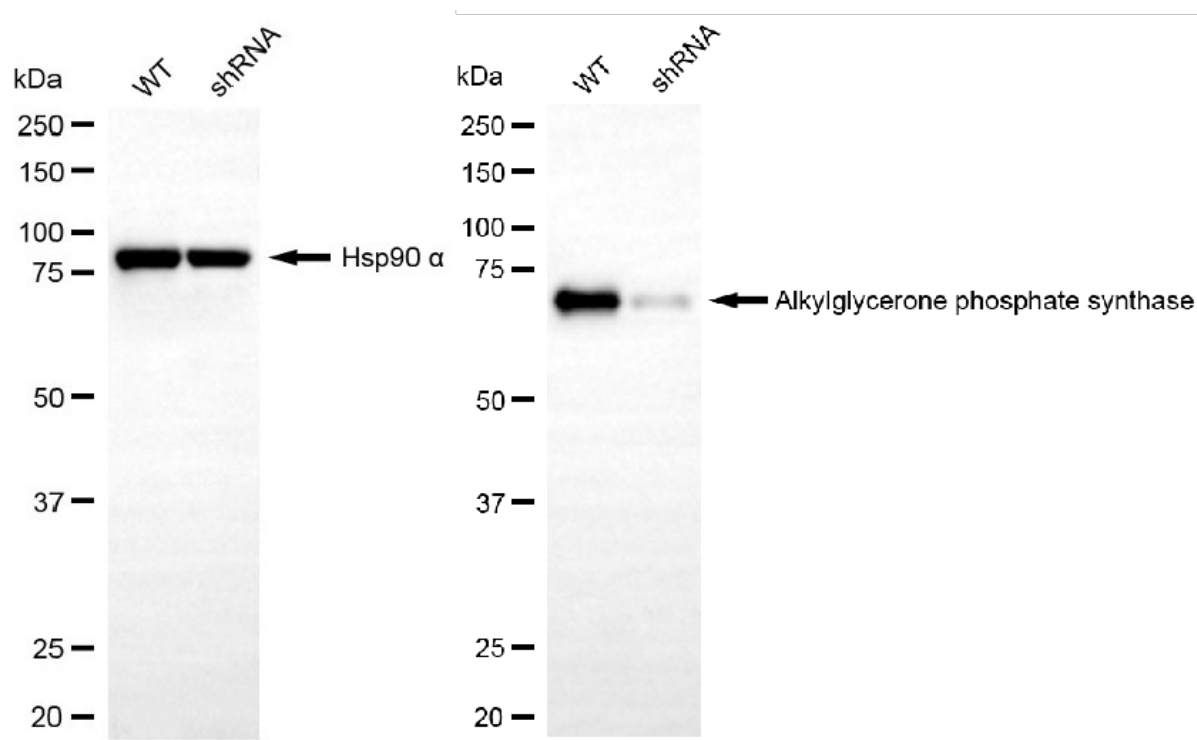
WWW.GENUINBIOTECH.COM



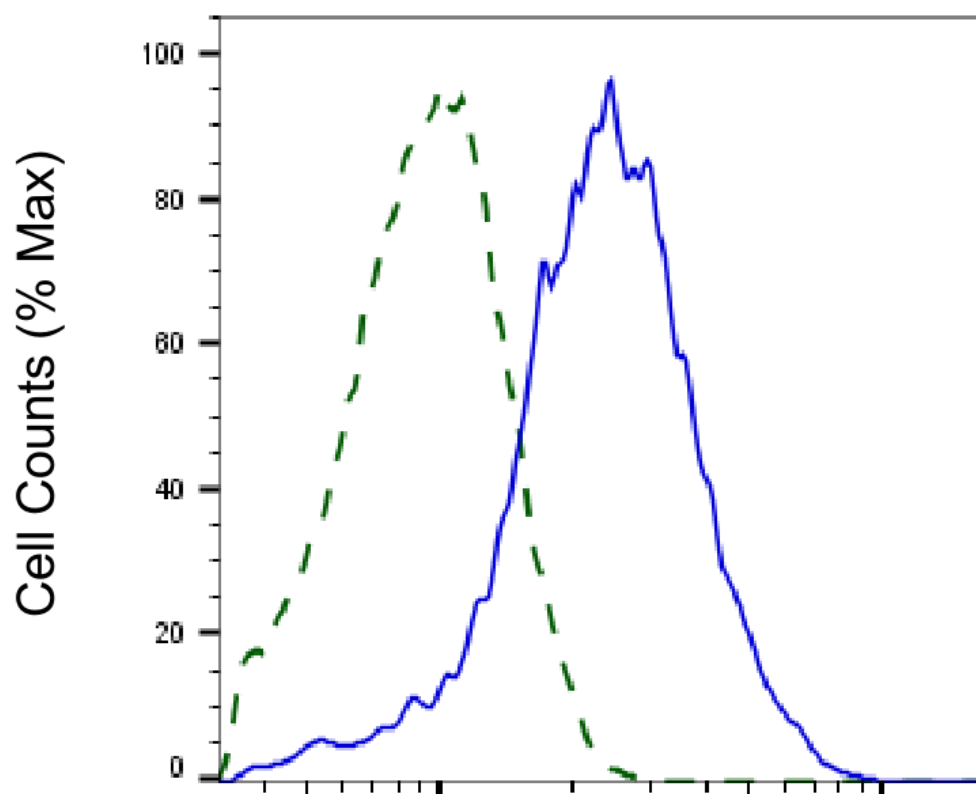
Immunocytochemical staining of HeLa cells with anti-Alkylglycerone phosphate synthase antibody (Cat#61813, 1:1,000). Nuclei were stained blue with DAPI; Alkylglycerone phosphate synthase was stained magenta with Alexa Fluor® 647. Images were taken using Leica stellaris 5. Protein abundance based on laser Intensity and smart gain: Low. Scale bar, 20 µm.



Western blotting analysis using anti-alkylglycerone phosphate synthase antibody (Cat#61813). Total cell lysates (30 µg) from various cell lines were loaded and separated by SDS-PAGE. The blot was incubated with anti-alkylglycerone phosphate synthase antibody (Cat#61813, 1:5,000) and HRP-conjugated goat anti-rabbit secondary antibody (Cat#201, 1:20,000) respectively. Image was developed using FeQ™ ECL Substrate Kit (Cat#226).



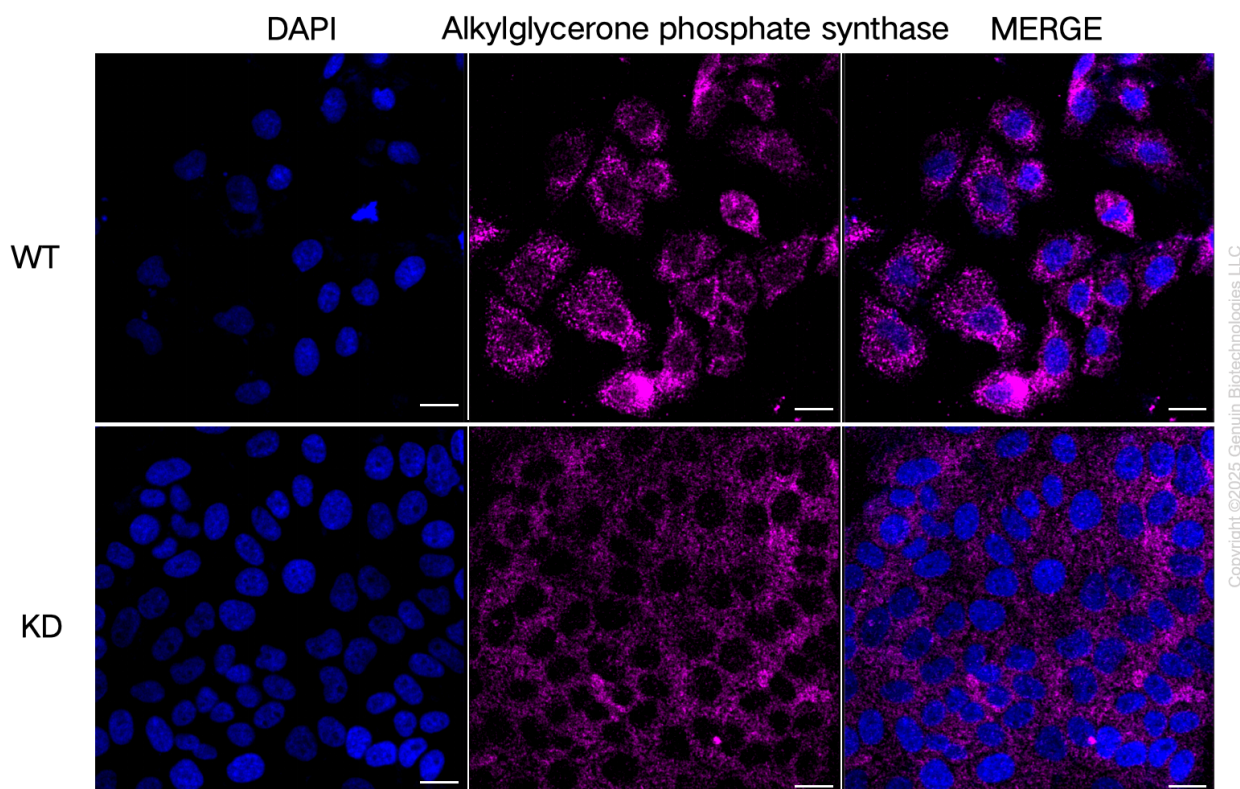
Western blotting analysis using anti-alkylglycerone phosphate synthase antibody (Cat#61813). Alkylglycerone phosphate synthase expression in wild-type (WT) and alkylglycerone phosphate synthase (AGPS) shRNA knockdown (KD) HepG2 cells with 20 µg of total cell lysates. Hsp90 α serves as a loading control. The blot was incubated with anti-alkylglycerone phosphate synthase antibody (Cat#61813, 1:5,000) and HRP-conjugated goat anti-rabbit secondary antibody (Cat#201, 1:20,000) respectively. Image was developed using NaQ™ ECL Substrate Kit (Cat#716).



Copyright ©2025 Genuin Biotechnologies LLC

Alkylglycerone phosphate synthase-Alexa Fluor® 647

Validation of Alkylglycerone phosphate synthase knockdown using flow cytometry. Wild-type(WT, Blue) and knockdown(KD, Green) HepG2 cells were stained with anti-Alkylglycerone phosphate synthase antibody (Cat#61813, 1:2,000) and analyzed using BD flow cytometer.



Immunocytochemical staining of HepG2 cells using anti-Alkylglycerone phosphate synthase antibody (Cat#61813, 1:1,000), Top panel: wild-type (WT); Bottom panel: Alkylglycerone phosphate synthase shRNA knockdown (KD). Nuclei were stained blue with DAPI; Alkylglycerone phosphate synthase was stained magenta with Alexa Fluor® 647. Scale bar, 20 μ m.