

KD-Validated Anti-RAD51 recombinase Recombinant Rabbit Monoclonal Antibody



Catalog #: 61815

Aliases

RAD51; RAD51 Recombinase; RAD51A; BRCC5; FANCR; RECA; BRCA1/BRCA2-Containing Complex, Subunit 5; DNA Repair Protein RAD51 Homolog 1; RAD51 Homolog A; HsT16930; HsRad51; HRAD51; RAD51 Homolog (RecA Homolog, E. Coli) (S. Cerevisiae); RAD51 (S. Cerevisiae) Homolog (E Coli RecA Homolog); RAD51 Homolog (S. Cerevisiae); RecA, E. Coli, Homolog Of; Recombination Protein A; RecA-Like Protein; HST16930; HSRAD51; HsRAD51; MRMV2

Background

Gene Name: RAD51

NCBI Gene Entry: [5888](#)

UniProt Entry: [Q06609](#)

Application Information

Molecular Weight: Predicted, 37 kDa, observed, 36 kDa

Clonality: Rabbit monoclonal antibody

Clone ID: 23GB4600

Species Reactivity: Human, mouse, rat

Applications Tested: Western blotting (WB), flow cytometry (FCM), immunocytochemistry (IC)

Immunogen

A synthesized peptide derived from human Rad51

Isotype

Rabbit IgG

Storage Buffer

Supplied in PBS (pH 7.4) containing 50% glycerol, and 0.02% sodium azide.

Storage

Store at -20 °C for one year.

Recommended Dilutions

Western Blotting (WB): 1:1,000-1:5,000

Flow Cytometry (FCM): 1:2,000

Immunocytochemistry (IC): 1:100-1:1,000

SUPPORT

SUPPORT@GENUINBIOTECH.COM
TEL: +1-540-855-7041

ORDERS

SALES@GENUINBIOTECH.COM
FAX: +1-540-855-7041

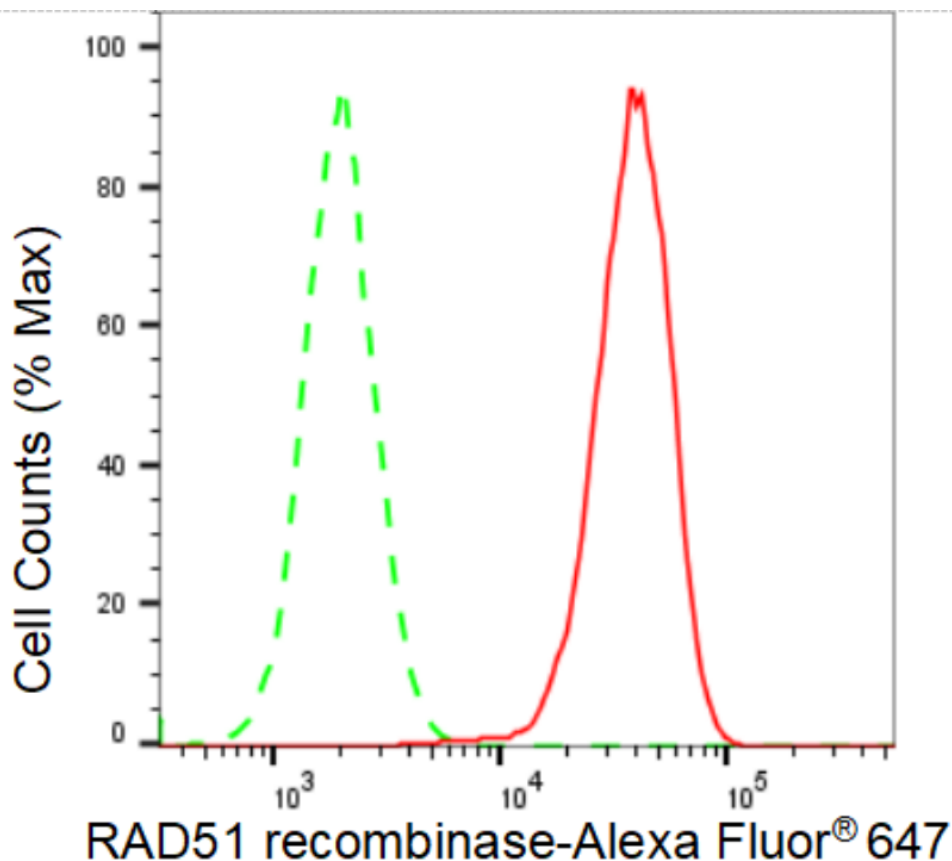
WWW.GENUINBIOTECH.COM

KD-Validated Anti-RAD51 recombinase Recombinant Rabbit Monoclonal Antibody

PAGE 2

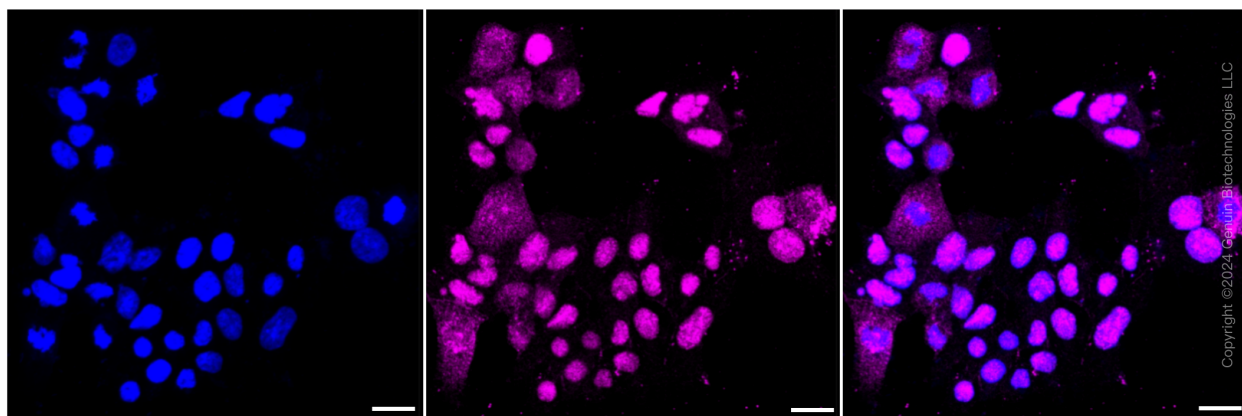
Note: This product is for research use only.

Validation Data



Copyright ©2024 Genuin Biotechnologies LLC

Flow cytometric analysis of RAD51 recombinase expression in HAP-1 cells using RAD51 recombinase antibody (Cat#61815, 1:2,000). Green, isotype control; red, RAD51 recombinase.



Copyright ©2024 Genuin Biotechnologies LLC

Immunocytochemical staining of HAP-1 cells with RAD51 recombinase antibody (Cat#61815, 1:1,000). Nuclei were stained blue with DAPI; RAD51 recombinase was stained magenta with Alexa Fluor® 647. Images were taken using Leica stellaris 5. Protein abundance based on laser

SUPPORT

SUPPORT@GENUINBIOTECH.COM
TEL: +1-540-855-7041

ORDERS

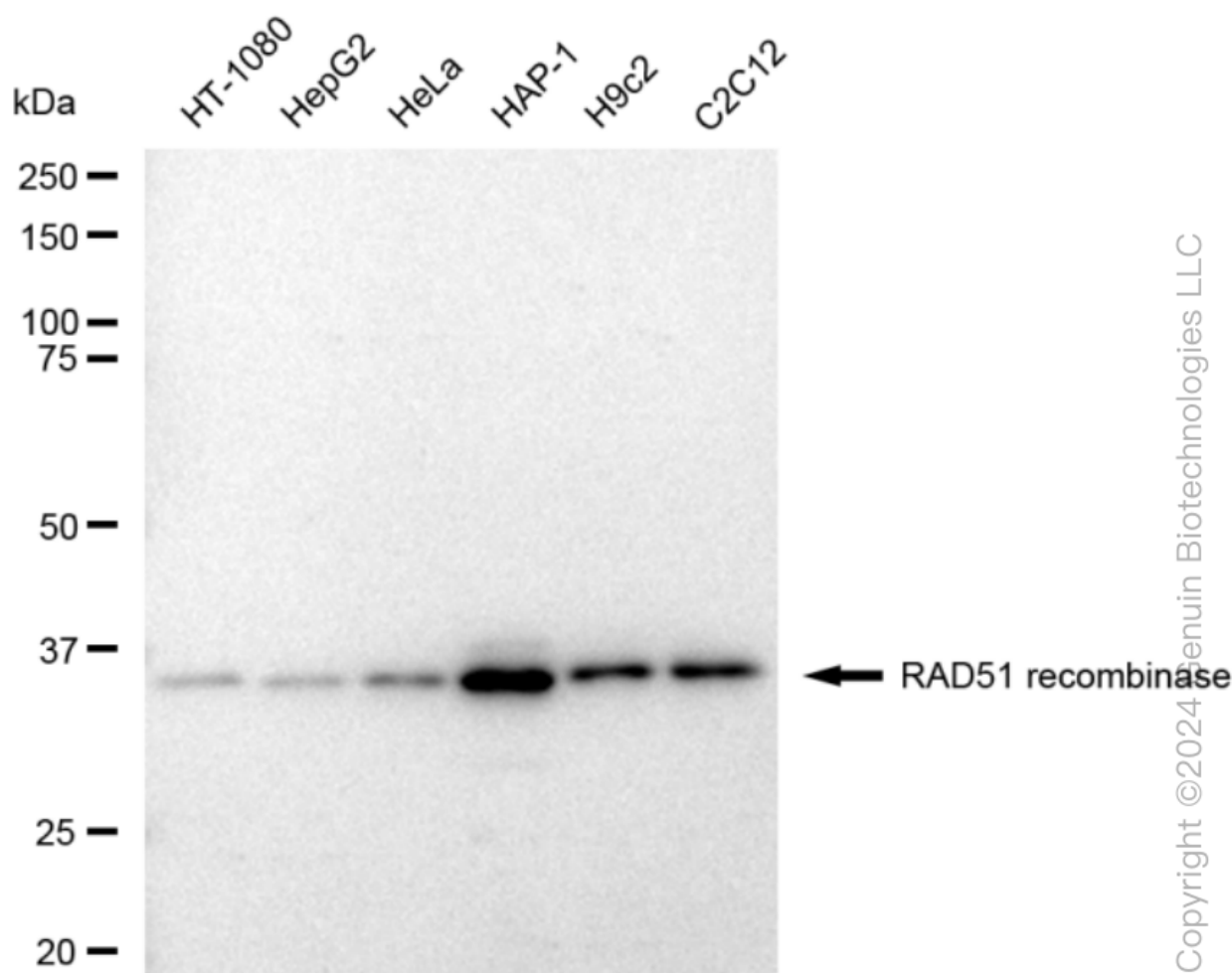
SALES@GENUINBIOTECH.COM
FAX: +1-540-855-7041

WWW.GENUINBIOTECH.COM

KD-Validated Anti-RAD51 recombinase Recombinant Rabbit Monoclonal Antibody

PAGE 3

Intensity and smart gain: Medium. Scale bar: 20 μ m.



Western blotting analysis using anti-RAD51 recombinase antibody (Cat#61815). Total cell lysates (30 μ g) from various cell lines were loaded and separated by SDS-PAGE. The blot was incubated with anti-RAD51 recombinase antibody (Cat#61815, 1:5,000) and HRP-conjugated goat anti-rabbit secondary antibody (Cat#201, 1:20,000) respectively. Image was developed using FeQ™ ECL Substrate Kit (Cat#226).

SUPPORT

SUPPORT@GENUINBIOTECH.COM
TEL: +1-540-855-7041

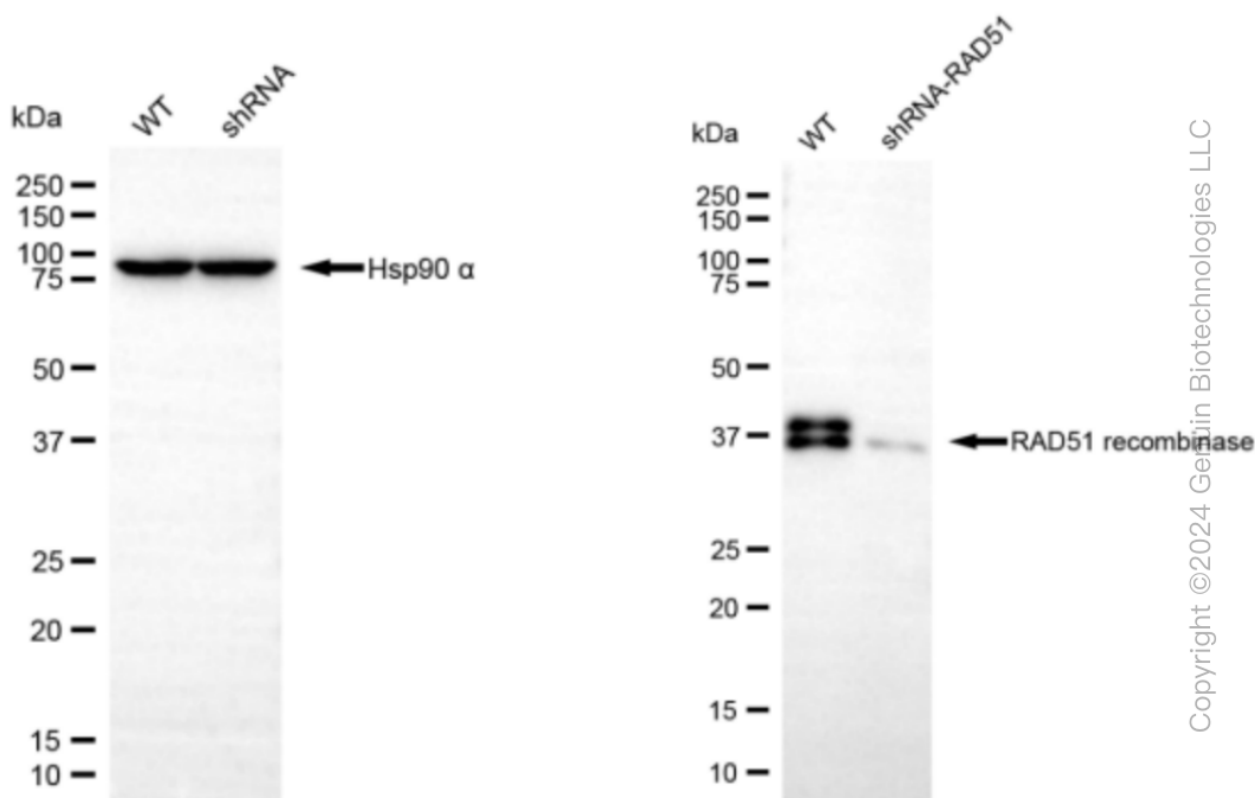
ORDERS

SALES@GENUINBIOTECH.COM
FAX: +1-540-855-7041

WWW.GENUINBIOTECH.COM

KD-Validated Anti-RAD51 recombinase Recombinant Rabbit Monoclonal Antibody

PAGE 4



Western blotting analysis using anti-RAD51 recombinase antibody (Cat#61815). RAD51 recombinase expression in wild type (WT) and RAD51 recombinase shRNA knockdown (KD) HeLa cells with 30 μ g of total cell lysates. β -Tubulin serves as a loading control. The blot was incubated with anti-RAD51 recombinase antibody (Cat#61815, 1:10,000) and HRP-conjugated goat anti-rabbit secondary antibody (Cat#201, 1:20,000) respectively. Image was developed using FeQ™ ECL Substrate Kit (Cat#226).

SUPPORT

SUPPORT@GENUINBIOTECH.COM
TEL: +1-540-855-7041

ORDERS

SALES@GENUINBIOTECH.COM
FAX: +1-540-855-7041

WWW.GENUINBIOTECH.COM