

KD-Validated Anti-AVEN Rabbit Monoclonal Antibody



Catalog #: 61818

Aliases

AVEN; Apoptosis And Caspase Activation Inhibitor; Cell Death Regulator Aven; PDCD12; Programmed Cell Death 12; Apoptosis, Caspase Activation Inhibitor

Background

Gene Name: AVEN

NCBI Gene Entry: [57099](#)

UniProt Entry: [Q9NQS1](#)

Application Information

Molecular Weight: Predicted, 39 kDa, observed, 50 kDa

Clonality: Rabbit monoclonal antibody

Clone ID: 25GB3870

Species Reactivity: Human, mouse, rat

Applications Tested: Western blotting (WB), flow cytometry (FCM), immunocytochemistry (IC)

Immunogen

A synthesized peptide derived from human AVEN

Isotype

Rabbit IgG

Storage Buffer

Supplied in PBS (pH 7.4) containing 50% glycerol, and 0.02% sodium azide.

Storage

Store at -20 °C for one year.

Recommended Dilutions

Western blotting (WB): 1:1,000-1:5,000

Flow Cytometry (FCM): 1:2,000

Immunocytochemistry (IC): 1:100-1:1,000

Note: This product is for research use only.

Validation Data

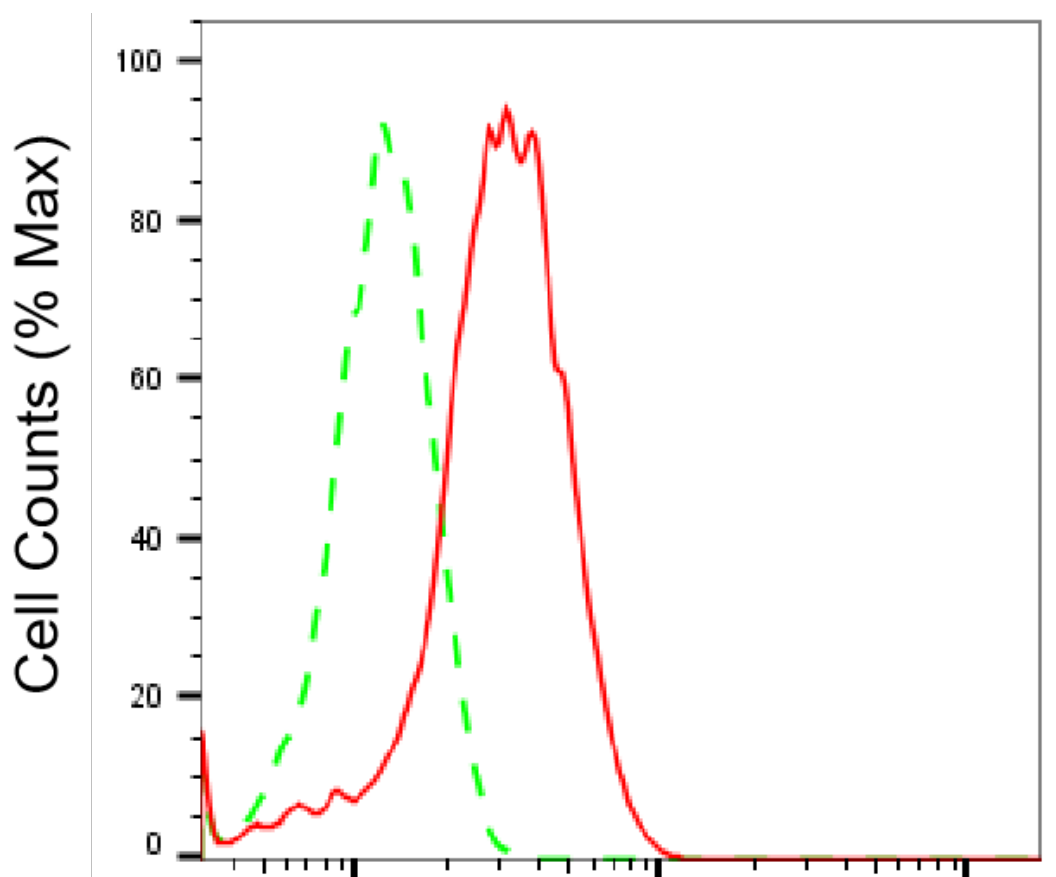
SUPPORT

SUPPORT@GENUINBIOTECH.COM
TEL: +1-540-855-7041

ORDERS

SALES@GENUINBIOTECH.COM
FAX: +1-540-855-7041

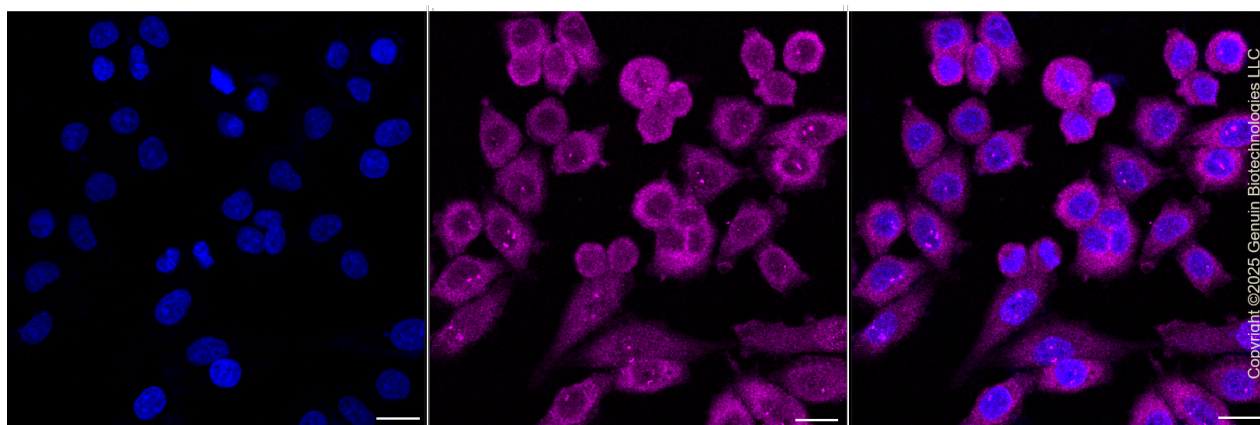
WWW.GENUINBIOTECH.COM



Copyright ©2025 Genuin Biotechnologies LLC

Apoptosis and caspase activation inhibitor-Alexa Fluor® 647

Flow cytometric analysis of Apoptosis and caspase activation inhibitor expression in HepG2 cells using anti-Apoptosis and caspase activation inhibitor antibody (Cat#61818, 1:2,000). Green, isotype control; red, Apoptosis and caspase activation inhibitor.



Copyright ©2025 Genuin Biotechnologies LLC

Immunocytochemical staining of HepG2 cells with anti-Apoptosis and caspase activation inhibitor

SUPPORT

SUPPORT@GENUINBIOTECH.COM
TEL: +1-540-855-7041

ORDERS

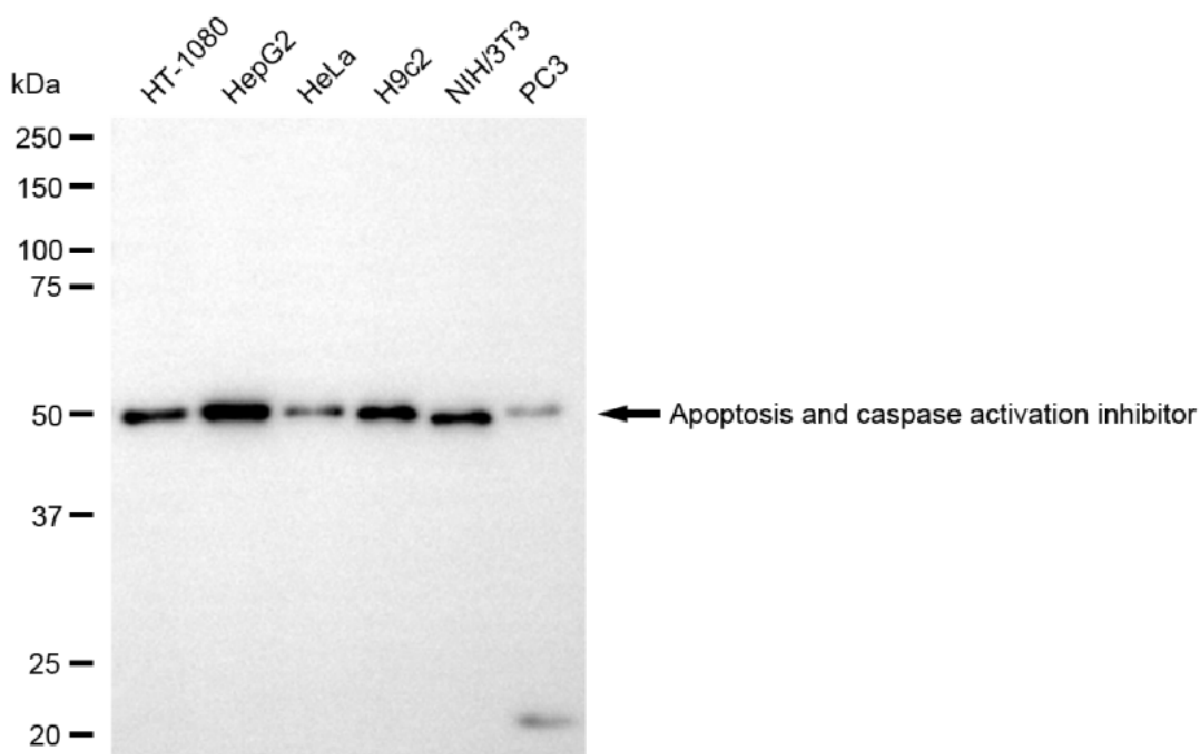
SALES@GENUINBIOTECH.COM
FAX: +1-540-855-7041

WWW.GENUINBIOTECH.COM

KD-Validated Anti-AVEN Rabbit Monoclonal Antibody

PAGE 3

antibody (Cat#61818, 1:1,000). Nuclei were stained blue with DAPI; Apoptosis and caspase activation inhibitor was stained magenta with Alexa Fluor® 647. Images were taken using Leica stellaris 5. Protein abundance based on laser Intensity and smart gain: Medium. Scale bar, 20 μ m.



Western blotting analysis using anti-apoptosis and caspase activation inhibitor antibody (Cat#61818). Total cell lysates (30 μ g) from various cell lines were loaded and separated by SDS-PAGE. The blot was incubated with anti-apoptosis and caspase activation inhibitor antibody (Cat#61818, 1:5,000) and HRP-conjugated goat anti-rabbit secondary antibody (Cat#201, 1:20,000) respectively. Image was developed using NaQ™ ECL Substrate Kit (Cat#716).

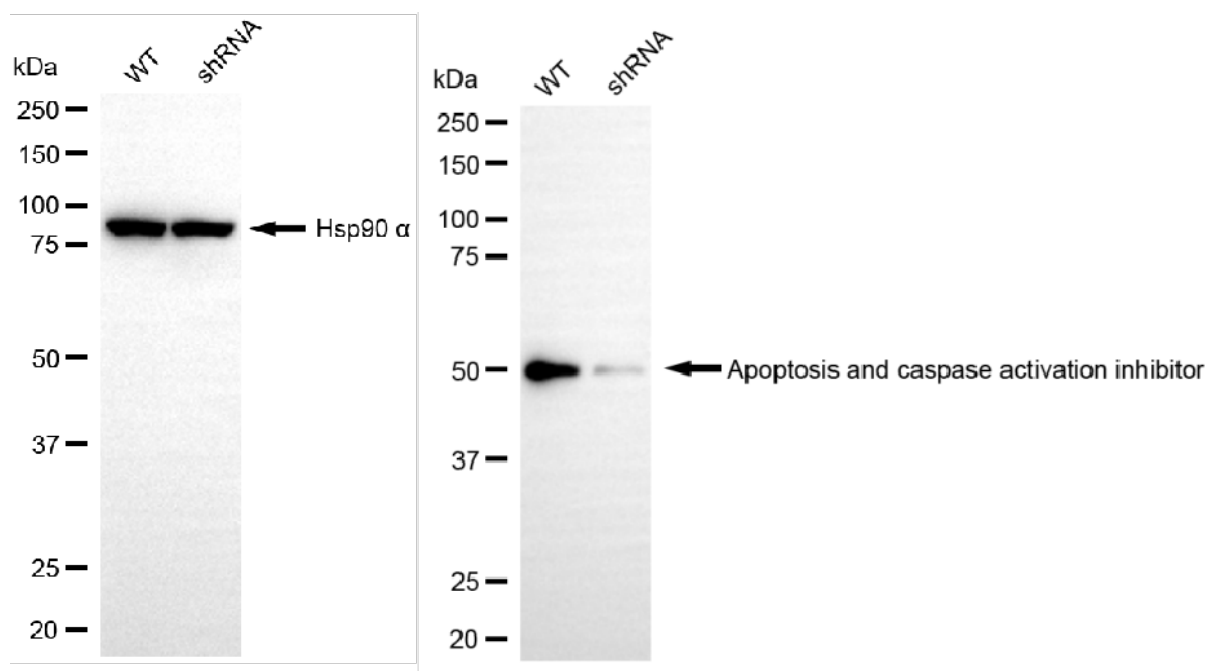
SUPPORT

SUPPORT@GENUINBIOTECH.COM
TEL: +1-540-855-7041

ORDERS

SALES@GENUINBIOTECH.COM
FAX: +1-540-855-7041

WWW.GENUINBIOTECH.COM



Western blotting analysis using anti-apoptosis and caspase activation inhibitor antibody (Cat#61818). Apoptosis and caspase activation inhibitor expression in wild-type (WT) and apoptosis and caspase activation inhibitor (AVEN) shRNA knockdown (KD) HT-1080 cells with 20 µg of total cell lysates. Hsp90 α serves as a loading control. The blot was incubated with anti-apoptosis and caspase activation inhibitor antibody (Cat#61818, 1:5,000) and HRP-conjugated goat anti-rabbit secondary antibody (Cat#201, 1:20,000) respectively. Image was developed using NaQ™ ECL Substrate Kit (Cat#716).