

KD-Validated Anti-CAB39 Rabbit Monoclonal Antibody



Catalog #: 61819

Aliases

CAB39; Calcium Binding Protein 39; MO25; CGI-66; Calcium-Binding Protein 39; MO25alpha; Protein Mo25

Background

Gene Name: CAB39

NCBI Gene Entry: [51719](#)

UniProt Entry: [Q9Y376](#)

Application Information

Molecular Weight: Predicted, 40 kDa, observed, 37 kDa

Clonality: Rabbit monoclonal antibody

Clone ID: 25GB3880

Species Reactivity: Human, mouse, rat

Applications Tested: Western blotting (WB), flow cytometry (FCM), immunocytochemistry (IC)

Immunogen

A synthesized peptide derived from human CAB39/MO25

Isotype

Rabbit IgG

Storage Buffer

Supplied in PBS (pH 7.4) containing 50% glycerol, and 0.02% sodium azide.

Storage

Store at -20 °C for one year.

Recommended Dilutions

Western blotting (WB): 1:1,000-1:5,000

Flow Cytometry (FCM): 1:2,000

Immunocytochemistry (IC): 1:100-1:1,000

Note: This product is for research use only.

Validation Data

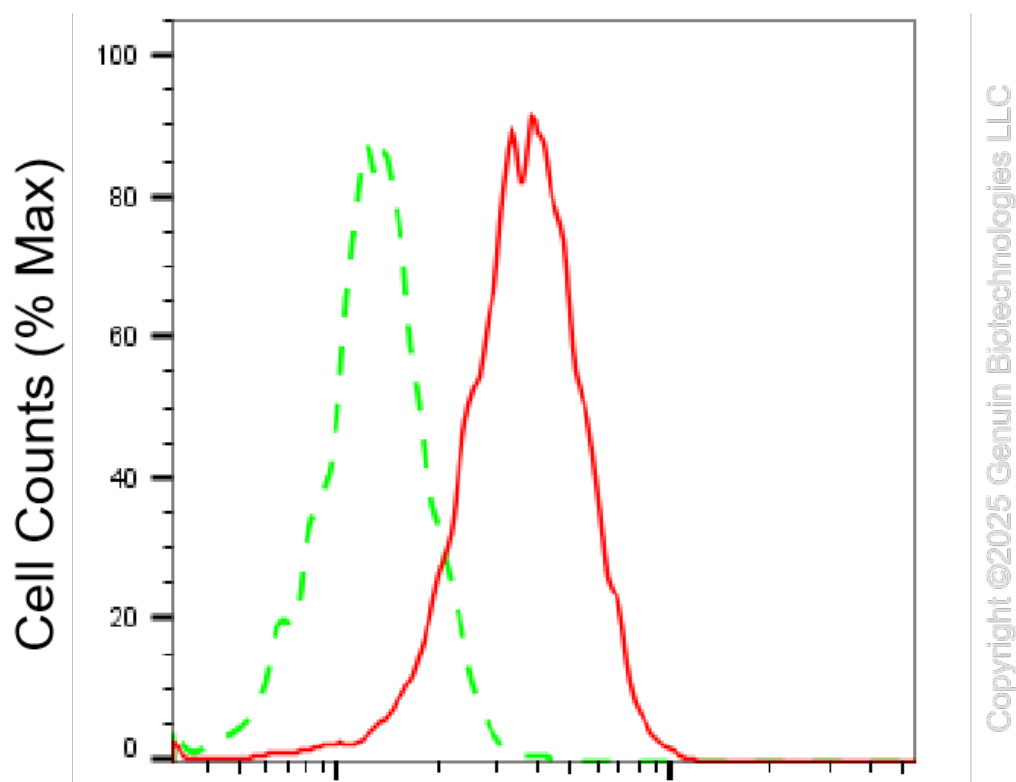
SUPPORT

SUPPORT@GENUINBIOTECH.COM
TEL: +1-540-855-7041

ORDERS

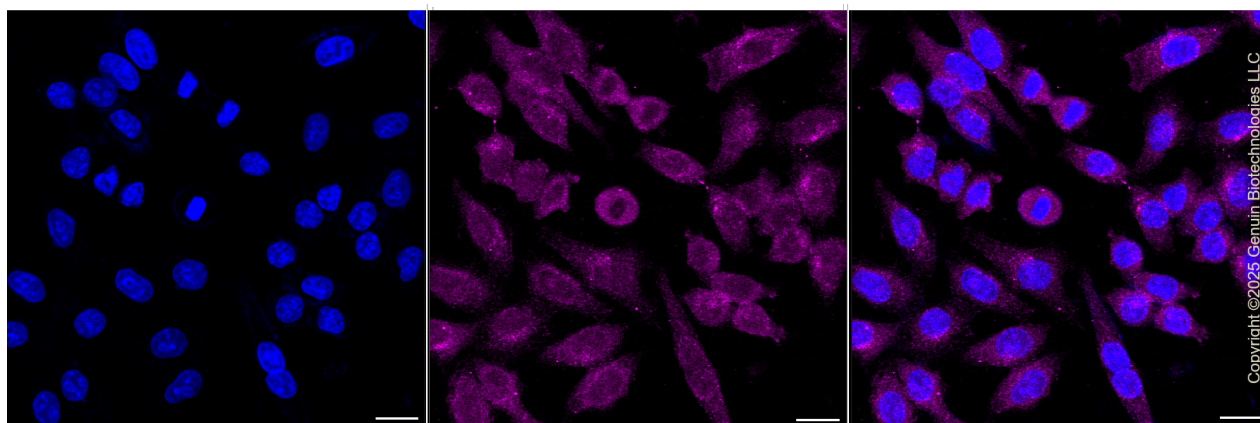
SALES@GENUINBIOTECH.COM
FAX: +1-540-855-7041

WWW.GENUINBIOTECH.COM



Calcium binding protein 39-Alexa Fluor® 647

Flow cytometric analysis of Calcium binding protein 39 expression in HepG2 cells using anti-Calcium binding protein 39 antibody (Cat#61819, 1:2,000). Green, isotype control; red, Calcium binding protein 39.



Immunocytochemical staining of HepG2 cells with anti-Calcium binding protein 39 antibody (Cat#61819, 1:1,000). Nuclei were stained blue with DAPI; Calcium binding protein 39 was stained magenta with Alexa Fluor® 647. Images were taken using Leica stellaris 5. Protein abundance based on laser Intensity and smart gain: Medium. Scale bar, 20 μ m.

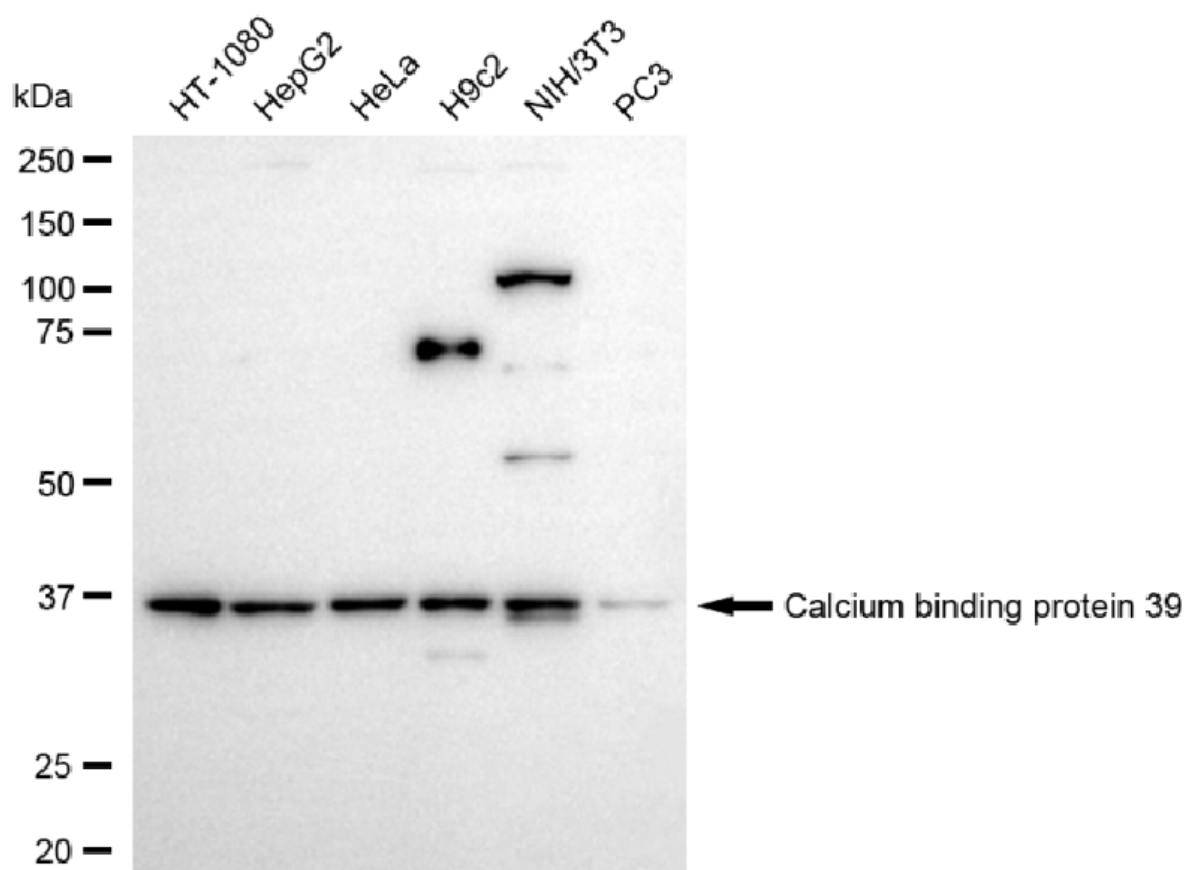
SUPPORT

SUPPORT@GENUINBIOTECH.COM
TEL: +1-540-855-7041

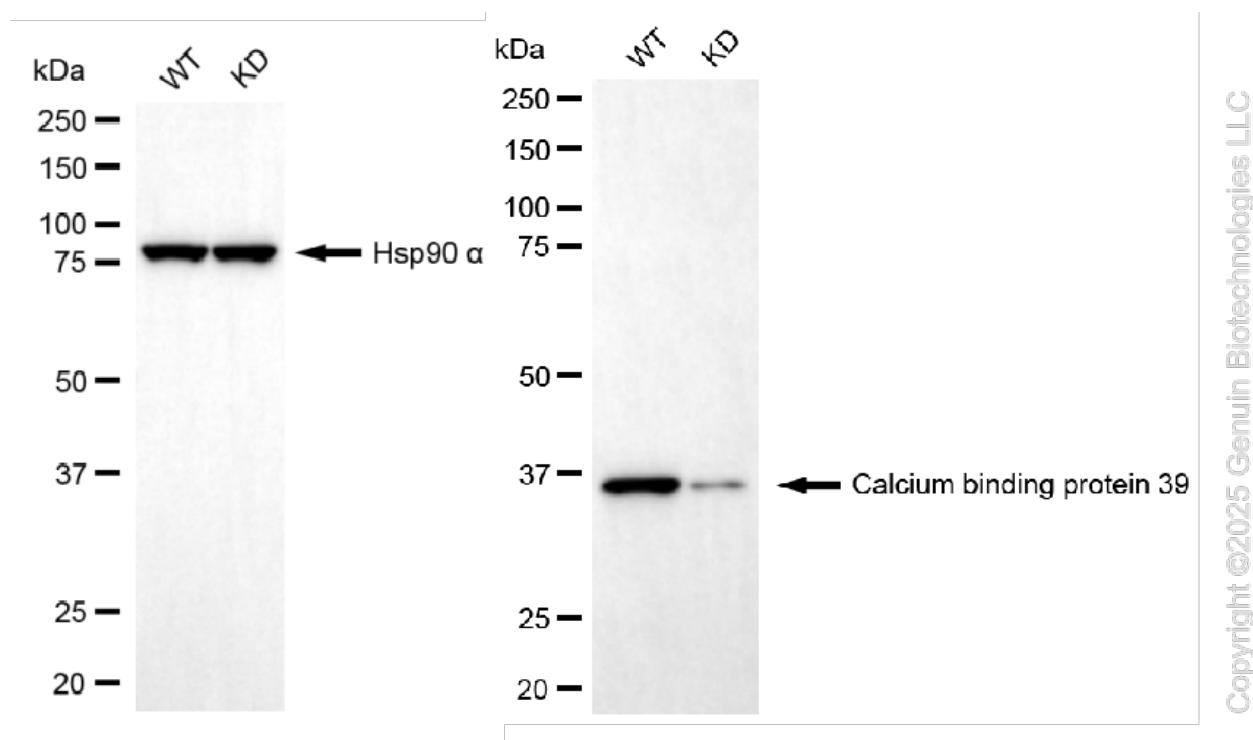
ORDERS

SALES@GENUINBIOTECH.COM
FAX: +1-540-855-7041

WWW.GENUINBIOTECH.COM



Western blotting analysis using anti-calcium binding protein 39 antibody (Cat#61819). Total cell lysates (30 µg) from various cell lines were loaded and separated by SDS-PAGE. The blot was incubated with anti-calcium binding protein 39 antibody (Cat#61819, 1:5,000) and HRP-conjugated goat anti-rabbit secondary antibody (Cat#201, 1:20,000) respectively. Image was developed using NaQ™ ECL Substrate Kit (Cat#716).



Western blotting analysis using anti-calcium binding protein 39 antibody (Cat#61819). Calcium binding protein 39 expression in wild-type (WT) and calcium binding protein 39 (CAB39) knockdown (KD) 293T cells with 20 µg of total cell lysates. Hsp90 α serves as a loading control. The blot was incubated with anti-calcium binding protein 39 antibody (Cat#61819, 1:5,000) and HRP-conjugated goat anti-rabbit secondary antibody (Cat#201, 1:20,000) respectively. Image was developed using NaQ™ ECL Substrate Kit (Cat#716).