

# KD-Validated Anti-MYB Binding Protein 1a Mouse Monoclonal Antibody



**Catalog #: 61821**

## Aliases

MYBBP1A; MYB Binding Protein 1a; P160; PAP2; Pol5; MYB Binding Protein (P160) 1a; P53-Activated Protein-2; Myb-Binding Protein 1A; FLJ37886

## Background

Gene Name: MYBBP1A

NCBI Gene Entry: [10514](#)

UniProt Entry: [Q9BQG0](#)

## Application Information

Molecular Weight: Predicted, 149 kDa; observed, 149 kDa

Clonality: Mouse monoclonal antibody

Clone ID: 25GB3890

Species Reactivity: Human

Applications Tested: Western blotting (WB), immunocytochemistry (IC)

## Immunogen

Recombinant protein of human MYBBP1A

## Isotype

Mouse IgG1 kappa

## Storage Buffer

Supplied in PBS (pH 7.4) containing 50% glycerol, and 0.02% sodium azide.

## Storage

Store at -20 °C for one year.

## Recommended Dilutions

Western Blotting (WB): 1:500-1:2,500

Immunocytochemistry (IC): 1:100-1:1,000

**Note:** This product is for research use only.

## Validation Data

---

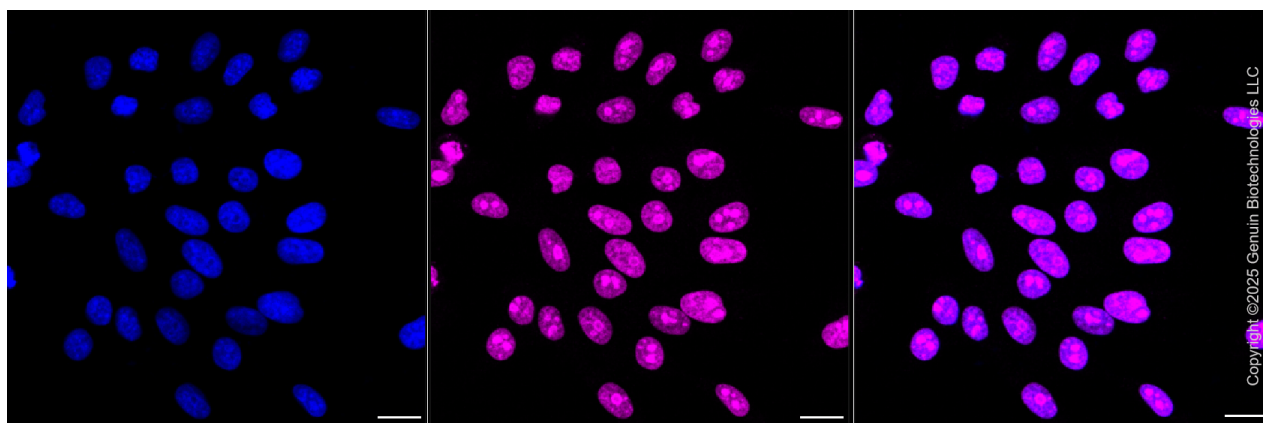
### SUPPORT

SUPPORT@GENUINBIOTECH.COM  
TEL: +1-540-855-7041

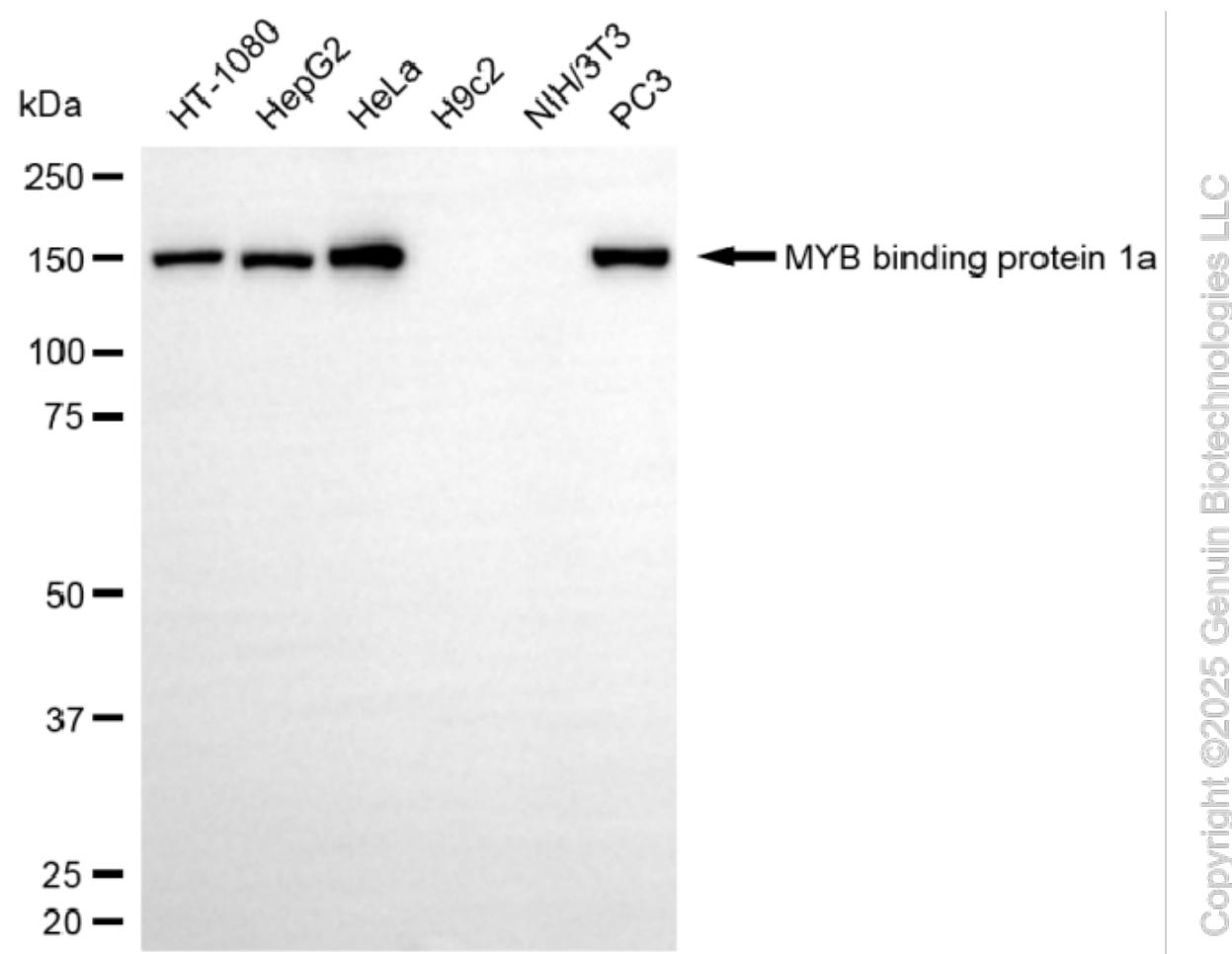
### ORDERS

SALES@GENUINBIOTECH.COM  
FAX: +1-540-855-7041

[WWW.GENUINBIOTECH.COM](http://WWW.GENUINBIOTECH.COM)



Immunocytochemical staining of HepG2 cells with anti-MYB binding protein 1a antibody (Cat#61821, 1:1,000). Nuclei were stained blue with DAPI; MYB binding protein 1a was stained magenta with Alexa Fluor® 647. Images were taken using Leica stellaris 5. Protein abundance based on laser Intensity and smart gain: Medium. Scale bar, 20  $\mu$ m.

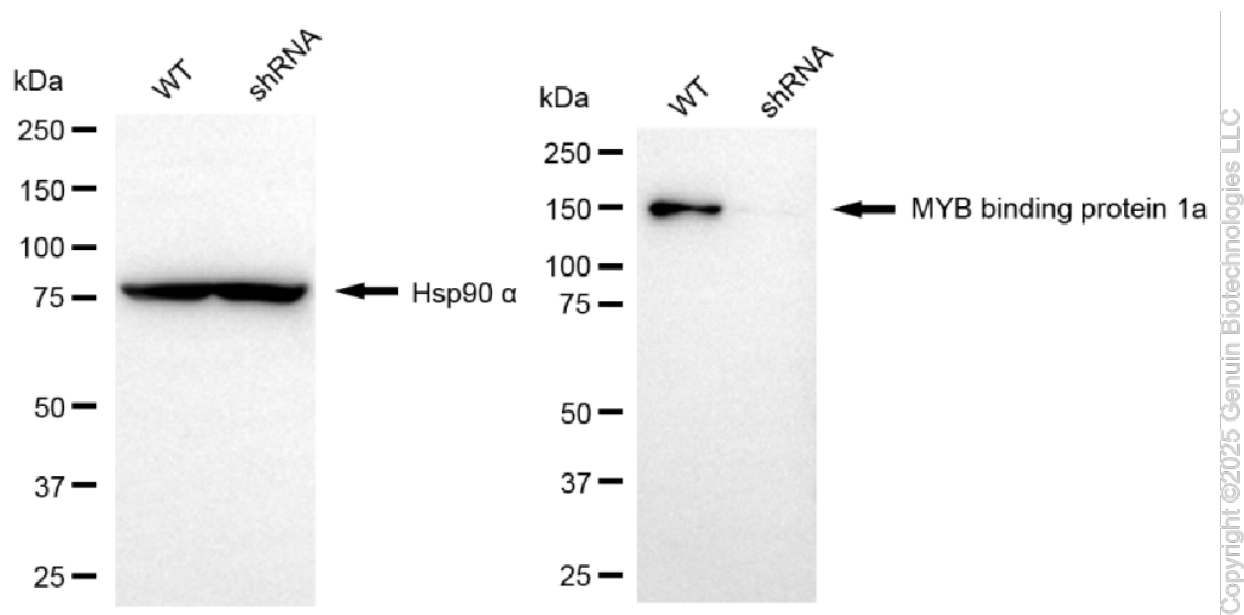


Western blotting analysis using anti-MYB binding protein 1a antibody (Cat#61821). Total cell lysates (30  $\mu$ g) from various cell lines were loaded and separated by SDS-PAGE. The blot was incubated with anti-MYB binding protein 1a antibody (Cat#61821, 1:2,500) and HRP-conjugated

## KD-Validated Anti-MYB Binding Protein 1a Mouse Monoclonal Antibody

PAGE 3

goat anti-mouse secondary antibody (Cat#101, 1:20,000) respectively. Image was developed using NaQ™ ECL Substrate Kit (Cat#716).



Western blotting analysis using anti-MYB binding protein 1a antibody (Cat#61821). MYB binding protein 1a expression in wild-type (WT) and MYB binding protein 1a (MYBBP1A) shRNA knockdown (KD) HeLa cells with 20 µg of total cell lysates. Hsp90 α serves as a loading control. The blot was incubated with anti-MYB binding protein 1a antibody (Cat#61821, 1:5,000) and HRP-conjugated goat anti-mouse secondary antibody (Cat#101, 1:20,000) respectively. Image was developed using NaQ™ ECL Substrate Kit (Cat#716).

### SUPPORT

SUPPORT@GENUINBIOTECH.COM  
TEL: +1-540-855-7041

### ORDERS

SALES@GENUINBIOTECH.COM  
FAX: +1-540-855-7041

[WWW.GENUINBIOTECH.COM](http://WWW.GENUINBIOTECH.COM)