

# KD-Validated Anti-CYP1A2 Mouse Monoclonal Antibody



**Catalog #: 61822**

## Aliases

CYP1A2; Cytochrome P450 Family 1 Subfamily A Member 2; P3-450; CP12; Cytochrome P450, Subfamily I (Aromatic Compound-Inducible), Polypeptide 2; Cytochrome P450, Family 1, Subfamily A, Polypeptide 2; Hydroperoxy Icosatetraenoate Dehydratase; Cholesterol 25-Hydroxylase; Cytochrome P450 1A2; Cytochrome P(3)450; Cytochrome P450-P3; Cytochrome P450 4; EC 1.14.14.1; CYPIA2; Flavoprotein-Linked Monooxygenase; Aryl Hydrocarbon Hydroxylase; Microsomal Monooxygenase; Xenobiotic Monooxygenase; Dioxin-Inducible P3-450; EC 4.2.1.152; P450 Form 4; P450(PA)

## Background

Gene Name: CYP1A2

NCBI Gene Entry: [1544](#)

UniProt Entry: [P05177](#)

## Application Information

Molecular Weight: Predicted, 58 kDa; observed, 59 kDa

Clonality: Mouse monoclonal antibody

Clone ID: 25GB3895

Species Reactivity: Human, mouse, rat

Applications Tested: Western blotting (WB), flow cytometry (FCM)

## Immunogen

A synthesized peptide derived from human Cytochrome P450 1A2

## Isotype

Mouse IgG3

## Storage Buffer

Supplied in PBS (pH 7.4) containing 50% glycerol, and 0.02% sodium azide.

## Storage

Store at -20 °C for one year.

## Recommended Dilutions

Western Blotting (WB): 1:1,000-1:5,000

Flow Cytometry (FCM): 1:2,000

---

### SUPPORT

SUPPORT@GENUINBIOTECH.COM  
TEL: +1-540-855-7041

### ORDERS

SALES@GENUINBIOTECH.COM  
FAX: +1-540-855-7041

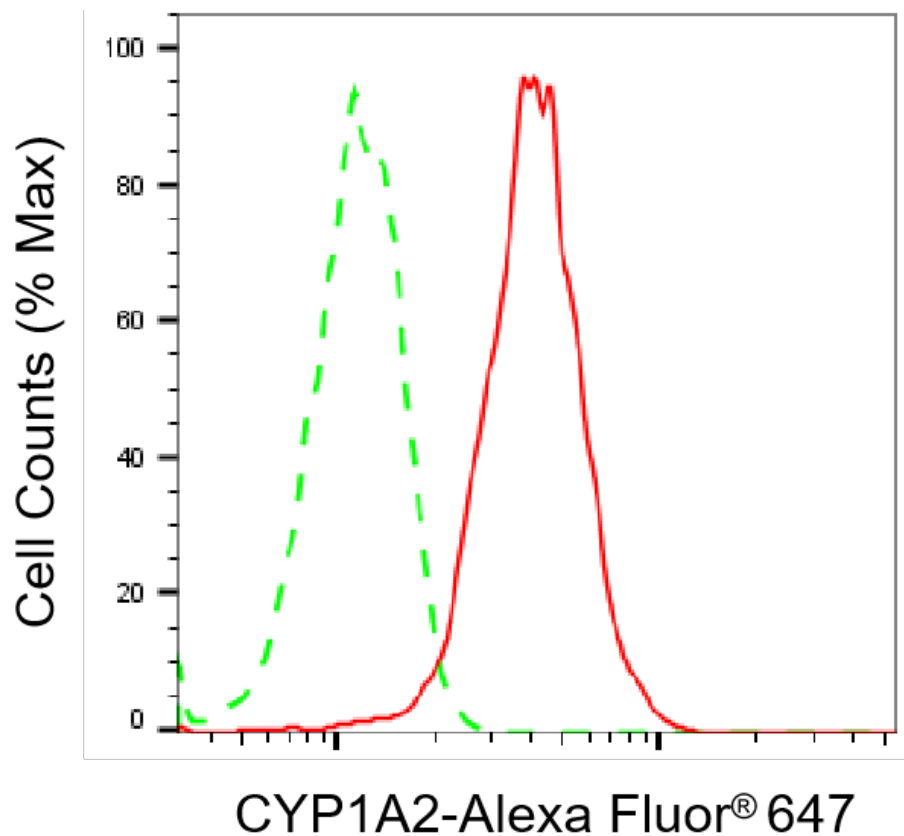
[WWW.GENUINBIOTECH.COM](http://WWW.GENUINBIOTECH.COM)

## KD-Validated Anti-CYP1A2 Mouse Monoclonal Antibody

PAGE 2

**Note:** This product is for research use only.

### Validation Data



Copyright ©2025 Genuin Biotechnologies LLC

Flow cytometric analysis of CYP1A2 expression in HAP-1 cells using anti-CYP1A2 antibody (Cat#61822, 1:2,000). Green, isotype control; red, CYP1A2.

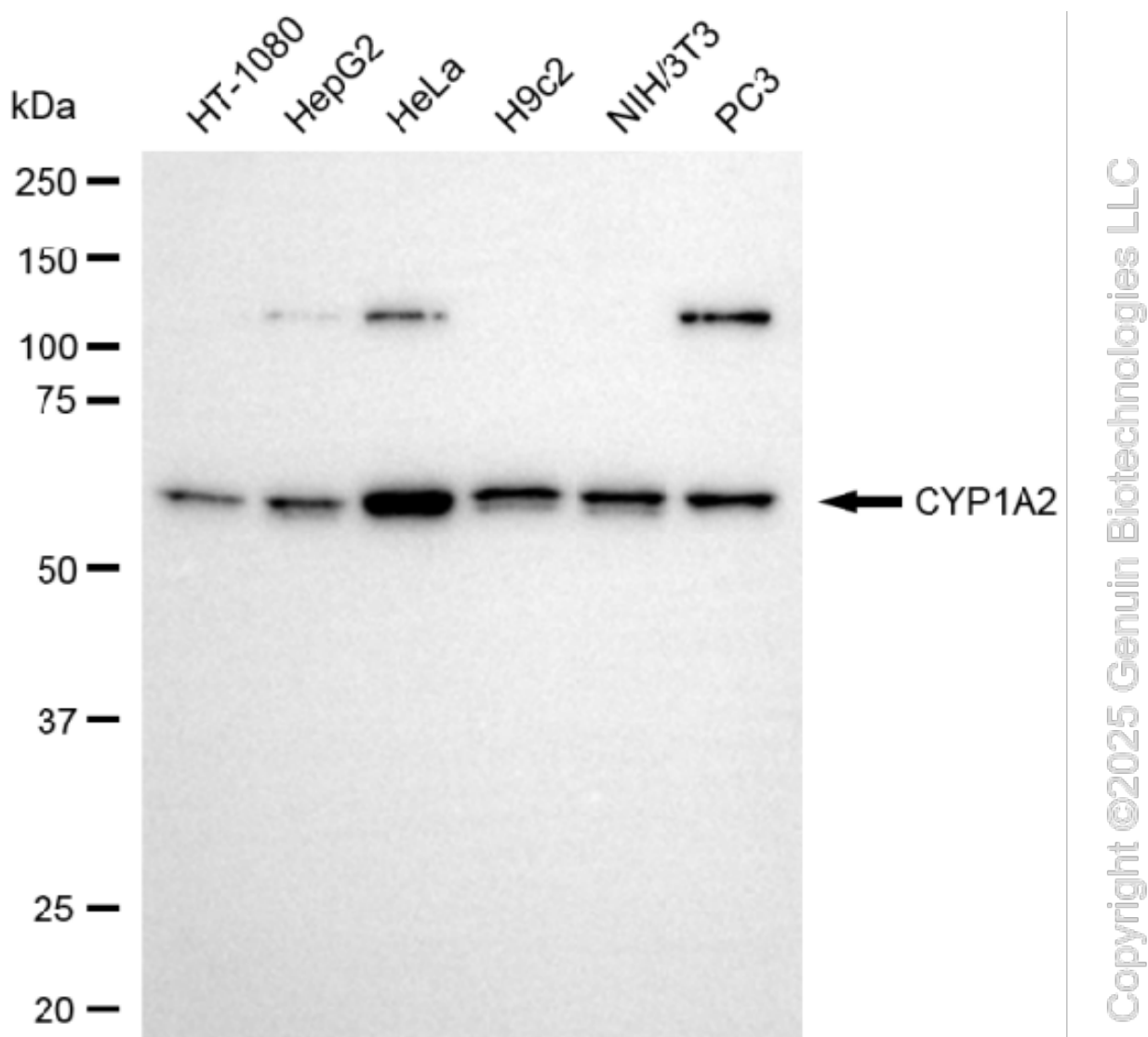
#### SUPPORT

SUPPORT@GENUINBIOTECH.COM  
TEL: +1-540-855-7041

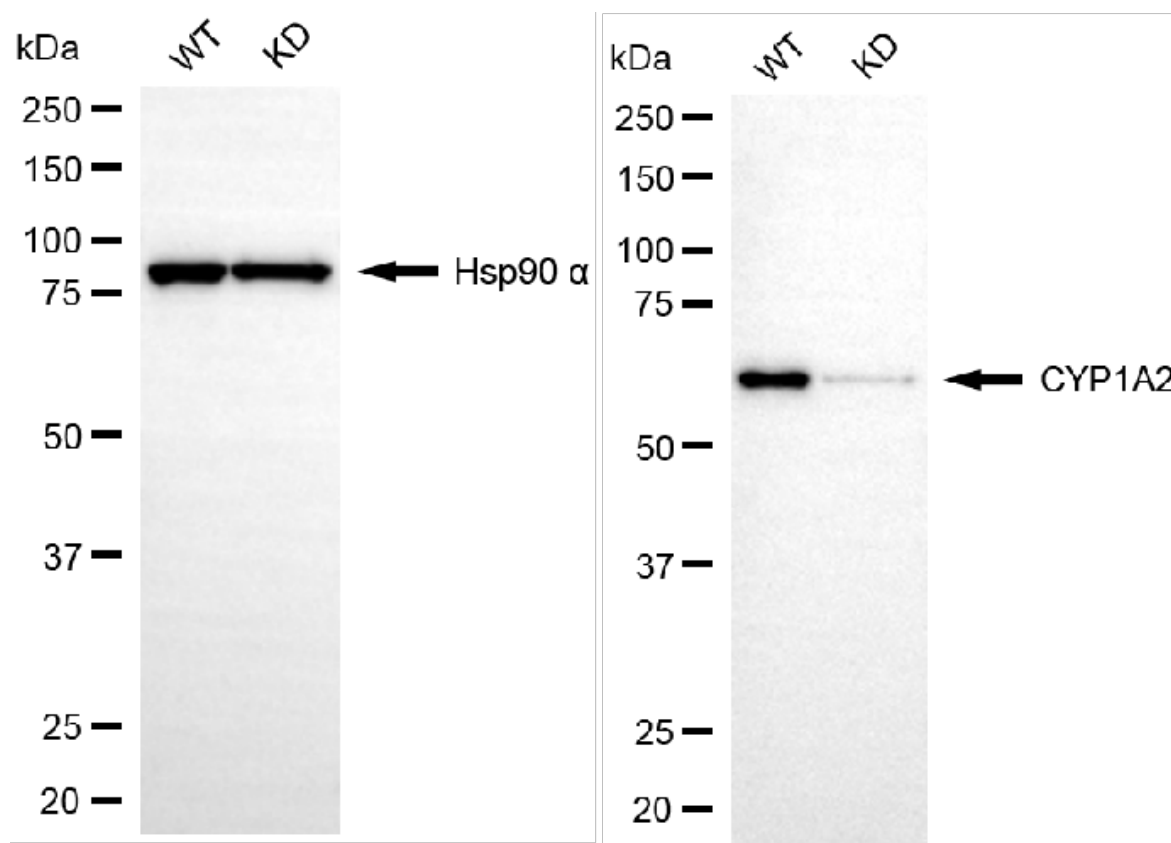
#### ORDERS

SALES@GENUINBIOTECH.COM  
FAX: +1-540-855-7041

[WWW.GENUINBIOTECH.COM](http://WWW.GENUINBIOTECH.COM)



Western blotting analysis using anti-CYP1A2 antibody (Cat#61822). Total cell lysates (30  $\mu$ g) from various cell lines were loaded and separated by SDS-PAGE. The blot was incubated with anti-CYP1A2 antibody (Cat#61822, 1:5,000) and HRP-conjugated goat anti-mouse secondary antibody (Cat#101, 1:20,000) respectively. Image was developed using FeQ™ ECL Substrate Kit (Cat#226).



Western blotting analysis using anti-CYP1A2 antibody (Cat#61822). CYP1A2 expression in wild-type (WT) and CYP1A2 knockdown (KD) 293T cells with 20  $\mu$ g of total cell lysates. Hsp90  $\alpha$  serves as a loading control. The blot was incubated with anti-CYP1A2 antibody (Cat#61822, 1:5,000) and HRP-conjugated goat anti-mouse secondary antibody (Cat#101, 1:20,000) respectively. Image was developed using FeQ™ ECL Substrate Kit (Cat#226).