

KD-Validated Anti-Enolase 2 Mouse Monoclonal Antibody



Catalog #: 61823

Aliases

ENO2; Enolase 2; NSE; Gamma-Enolase; 2-Phospho-D-Glycerate Hydro-Lyase; Enolase 2 (Gamma, Neuronal); Neuronal Enriched Enolase; Neuron-Specific Enolase; Neural Enolase; EC 4.2.1.11; Epididymis Secretory Protein Li 279; 2-Phospho-D-Glycerate Hydrolyase; Neuron Specific Gamma Enolase; Neurone-Specific Enolase; Neuron Specific Enolase; HEL-S-279

Background

NCBI Gene Entry: [2026](#)

UniProt Entry: [P09104](#)

Application Information

Molecular Weight: Predicted, 47 kDa; observed, 47 kDa

Clonality: Mouse monoclonal antibody

Clone ID: 25GB3900

Species Reactivity: Human, mouse

Applications Tested: Western blotting (WB)

Immunogen

Recombinant protein of human Gamma-enolase

Isotype

Mouse IgG2b kappa

Storage Buffer

Supplied in PBS (pH 7.4) containing 50% glycerol, and 0.02% sodium azide.

Storage

Store at -20 °C for one year.

Recommended Dilutions

Western Blotting (WB): 1:1,000-1:5,000

Note: This product is for research use only.

Validation Data

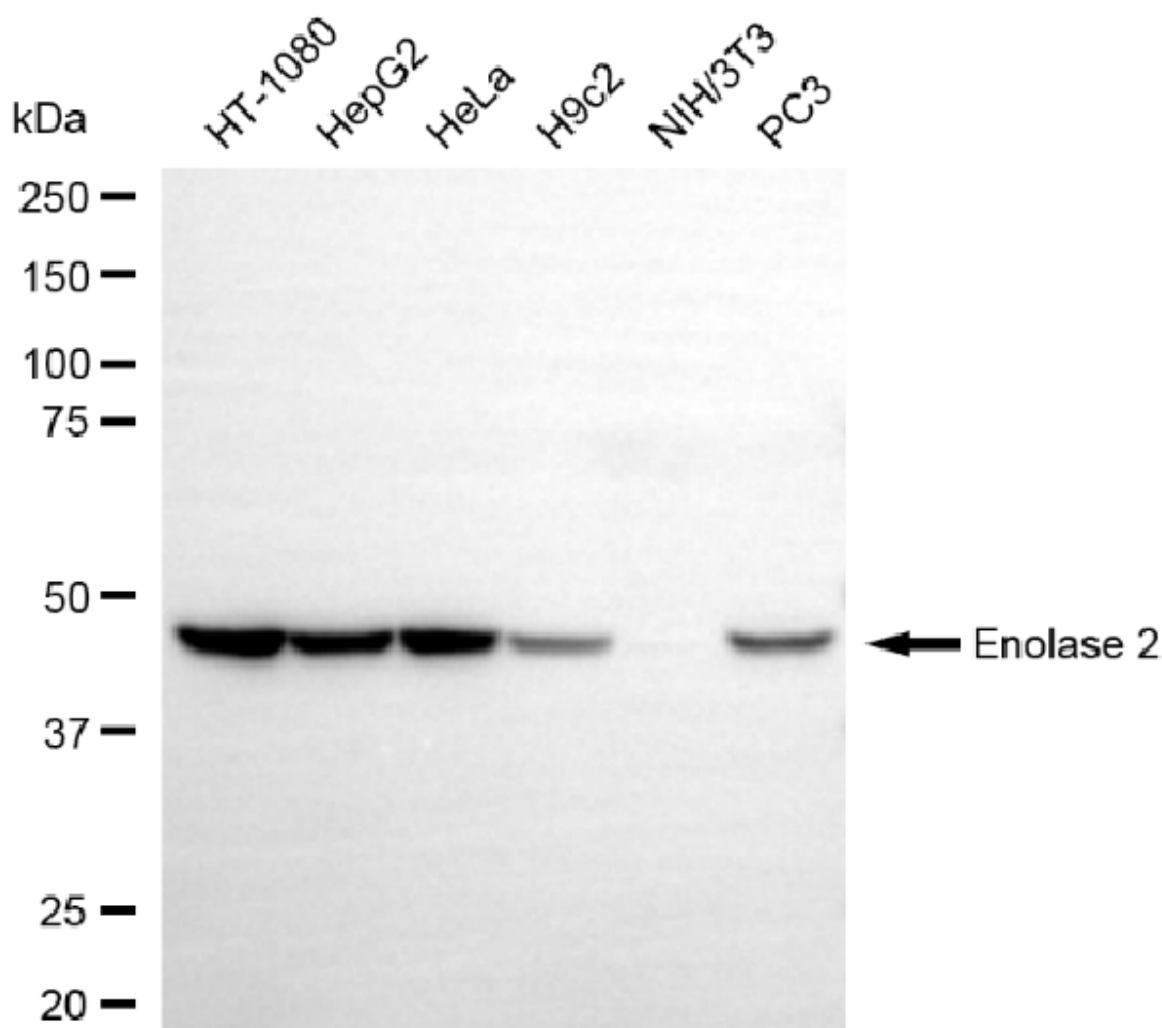
SUPPORT

SUPPORT@GENUINBIOTECH.COM
TEL: +1-540-855-7041

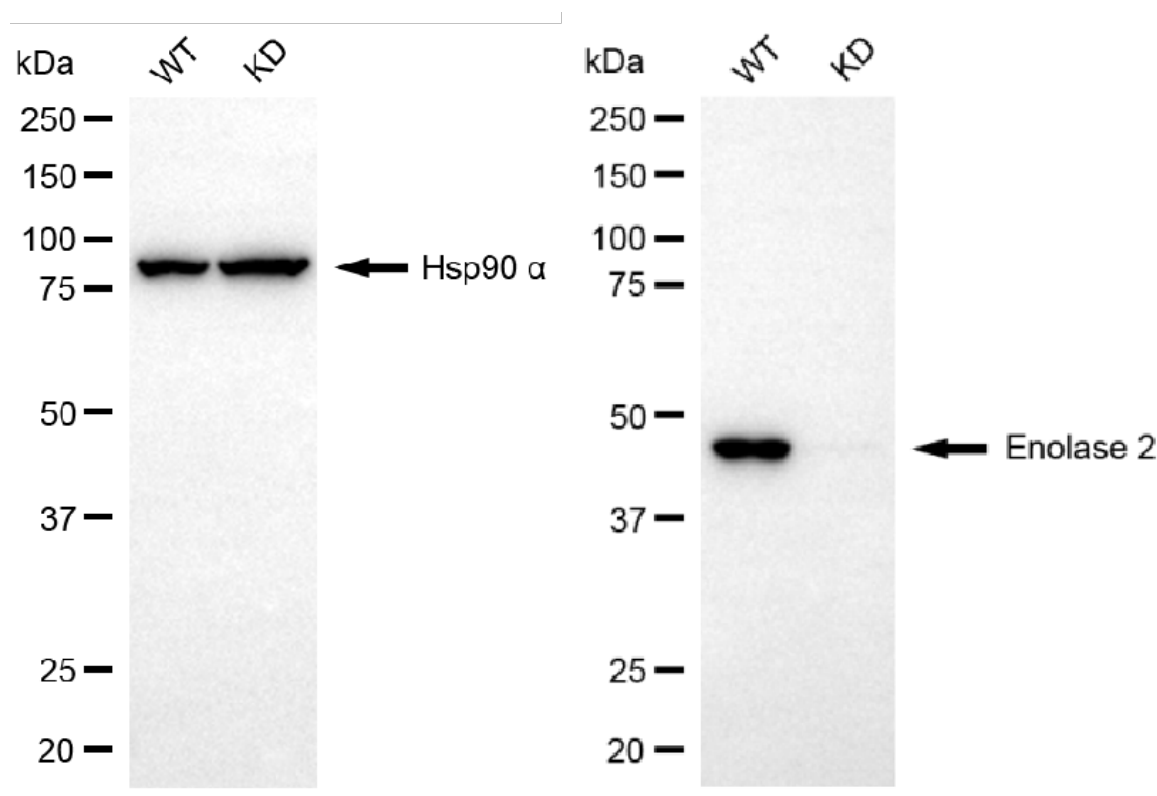
ORDERS

SALES@GENUINBIOTECH.COM
FAX: +1-540-855-7041

WWW.GENUINBIOTECH.COM



Western blotting analysis using anti-enolase 2 antibody (Cat#61823). Total cell lysates (30 μ g) from various cell lines were loaded and separated by SDS-PAGE. The blot was incubated with anti-enolase 2 antibody (Cat#61823, 1:5,000) and HRP-conjugated goat anti-mouse secondary antibody (Cat#101, 1:20,000) respectively. Image was developed using NaQ™ ECL Substrate Kit (Cat#716).



Copyright ©2025 Genuin Biotechnologies LLC

Western blotting analysis using anti-enolase 2 antibody (Cat#61823). Enolase 2 expression in wild-type (WT) and enolase 2 (ENO2) knockdown (KD) 293T cells with 20 µg of total cell lysates. Hsp90 α serves as a loading control. The blot was incubated with anti-enolase 2 antibody (Cat#61823, 1:2,500) and HRP-conjugated goat anti-mouse secondary antibody (Cat#201, 1:20,000) respectively. Image was developed using NaQ™ ECL Substrate Kit (Cat#716).