

KD-Validated Anti-Spermine synthase Recombinant Rabbit Monoclonal Antibody



Catalog #: 61824

Aliases

SMS; Spermine Synthase; SPMSY; MRSR; Spermidine Aminopropyltransferase; SpS; SRS; Snyder-Robinson X-Linked Mental Retardation Syndrome; EC 2.5.1.22; MRXSSR; SPS

Background

Gene Name: SMS

NCBI Gene Entry: [6611](#)

UniProt Entry: [P52788](#)

Application Information

Molecular Weight: Predicted, 41 kDa, observed, 41 kDa

Clonality: Rabbit monoclonal antibody

Clone ID: 23GB4640

Species Reactivity: Human

Applications Tested: Western blotting (WB), flow cytometry (FCM), immunocytochemistry (IC)

Immunogen

A synthesized peptide derived from human Spermine synthase

Isotype

Rabbit IgG

Storage Buffer

Supplied in PBS (pH 7.4) containing 50% glycerol, and 0.02% sodium azide.

Storage

Store at -20 °C for one year.

Recommended Dilutions

Western Blotting (WB): 1:1,000-1:5,000

Flow Cytometry (FCM): 1:2,000

Immunocytochemistry (IC): 1:100-1:1,000

Note: This product is for research use only.

Validation Data

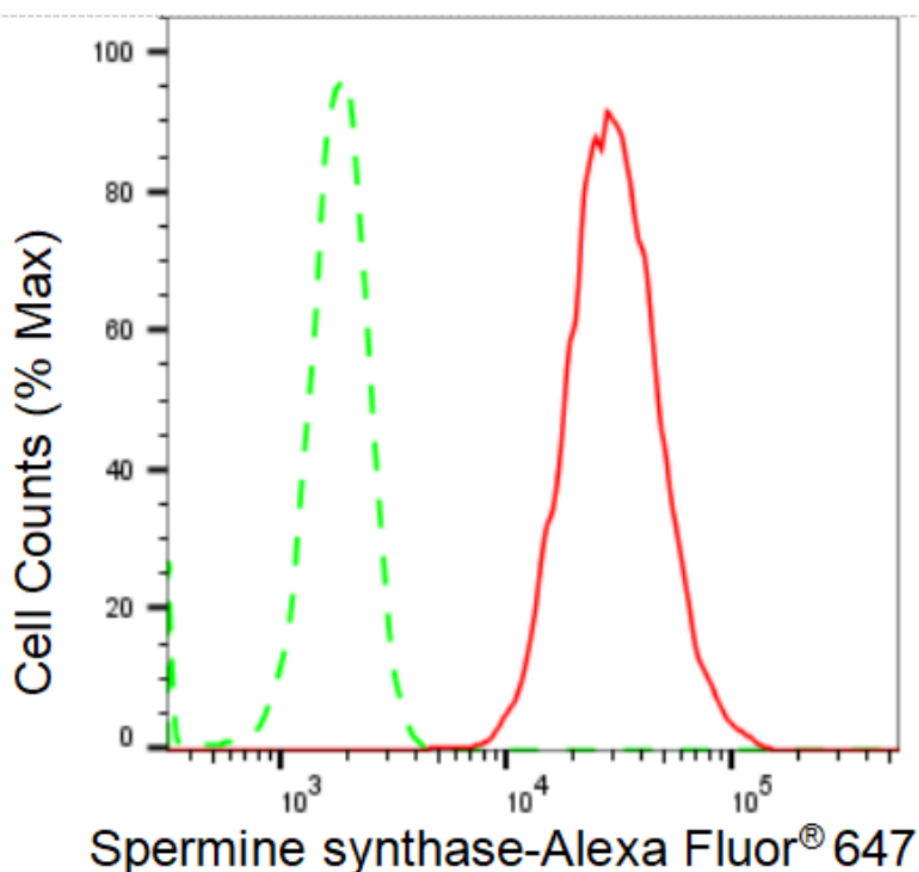
SUPPORT

SUPPORT@GENUINBIOTECH.COM
TEL: +1-540-855-7041

ORDERS

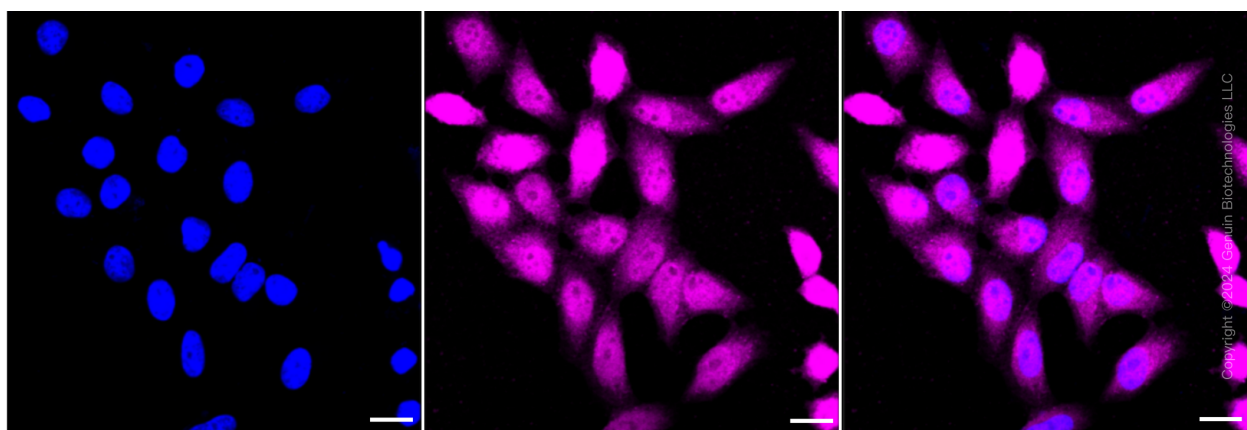
SALES@GENUINBIOTECH.COM
FAX: +1-540-855-7041

WWW.GENUINBIOTECH.COM



Copyright ©2024 Genuin Biotechnologies LLC

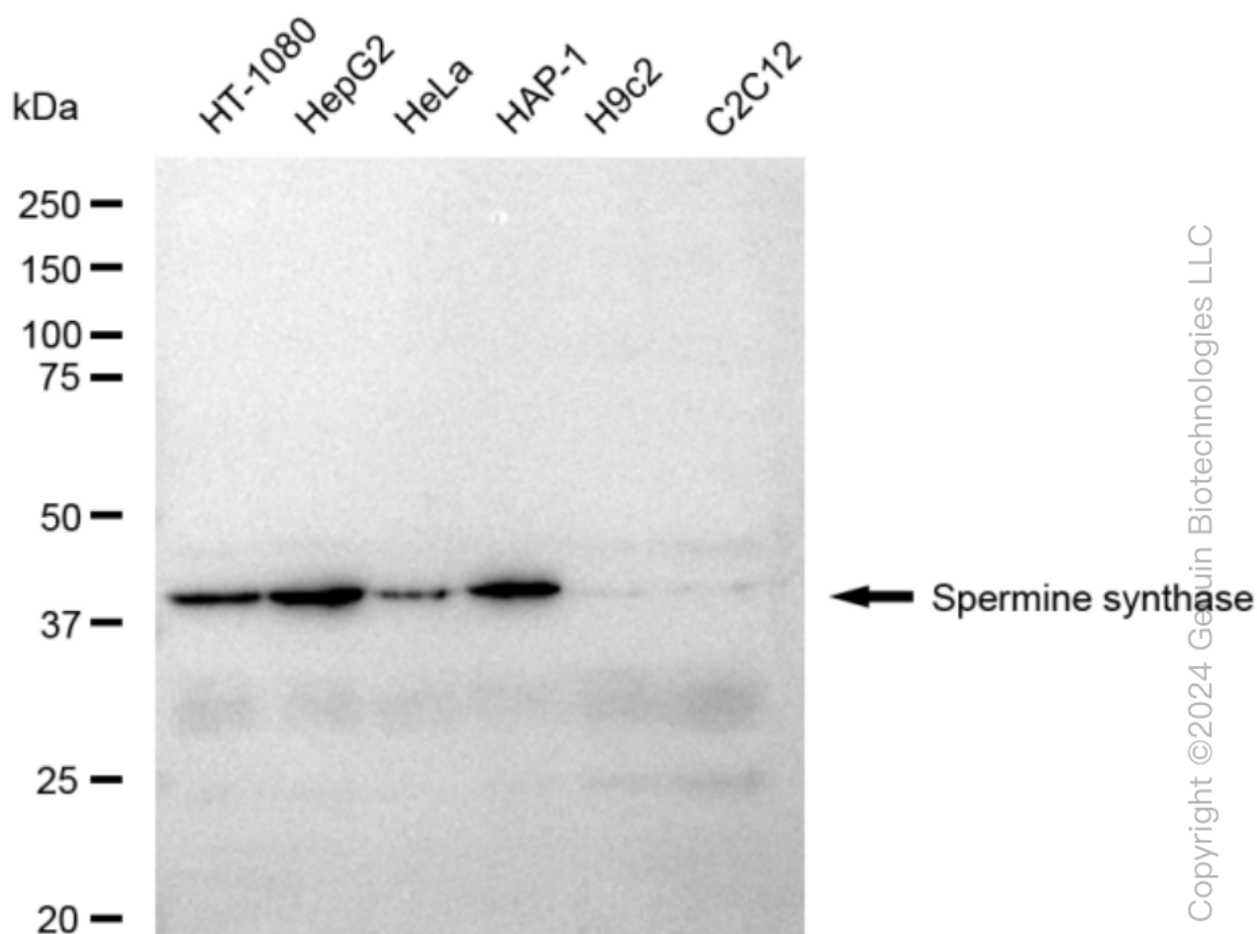
Flow cytometric analysis of Spermine synthase expression in HepG2 cells using Spermine synthase antibody (Cat#61824, 1:2,000). Green, isotype control; red, Spermine synthase



Immunocytochemical staining of HepG2 cells with Spermine synthase antibody (Cat#61824, 1:1,000). Nuclei were stained blue with DAPI; Spermine synthase was stained magenta with Alexa Fluor® 647. Images were taken using Leica stellaris 5. Protein abundance based on laser Intensity and smart gain: Medium. Scale bar: 20 μ m.

KD-Validated Anti-Spermine synthase Recombinant Rabbit Monoclonal Antibody

PAGE 3



Western blotting analysis using anti-Spermine synthase antibody (Cat#61824). Total cell lysates (30 µg) from various cell lines were loaded and separated by SDS-PAGE. The blot was incubated with anti-Spermine synthase antibody (Cat#61824, 1:5,000) and HRP-conjugated goat anti-rabbit secondary antibody (Cat#201, 1:20,000) respectively. Image was developed using FeQ™ ECL Substrate Kit (Cat#226).

SUPPORT

SUPPORT@GENUINBIOTECH.COM
TEL: +1-540-855-7041

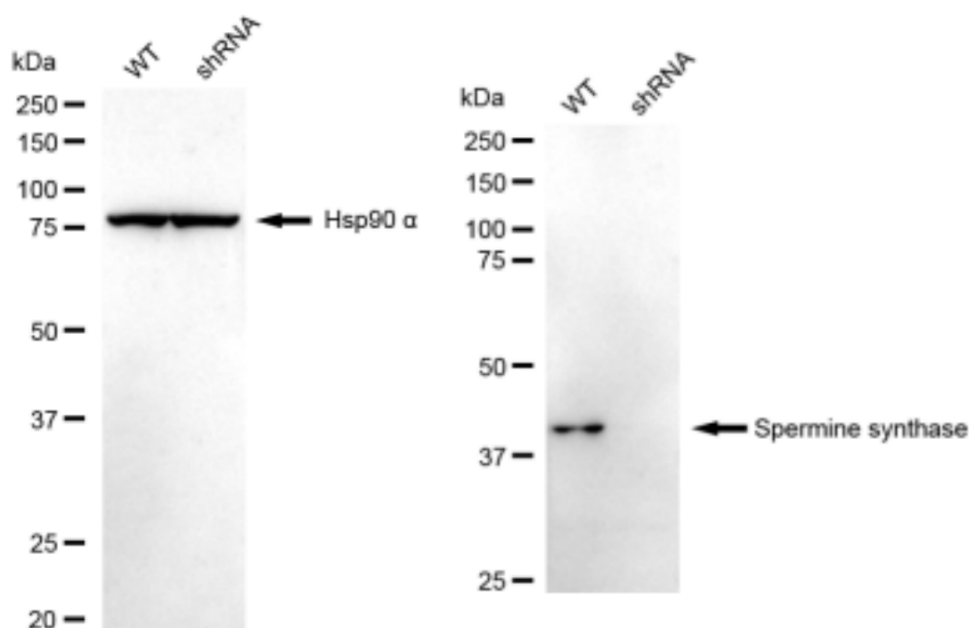
ORDERS

SALES@GENUINBIOTECH.COM
FAX: +1-540-855-7041

WWW.GENUINBIOTECH.COM

KD-Validated Anti-Spermine synthase Recombinant Rabbit Monoclonal Antibody

PAGE 4



Copyright ©2024 Genuin Biotechnologies LLC

Western blotting analysis using anti-Spermine synthase antibody (Cat#61824). Spermine synthase expression in wild type (WT) and Spermine synthase shRNA knockdown (KD) HeLa cells with 30 μ g of total cell lysates. Hsp90 α serves as a loading control. The blot was incubated with anti-Spermine synthase antibody (Cat#61824, 1:5,000) and HRP-conjugated goat anti-rabbit secondary antibody (Cat#201, 1:20,000) respectively. Image was developed using FeQTM ECL Substrate Kit (Cat#226).

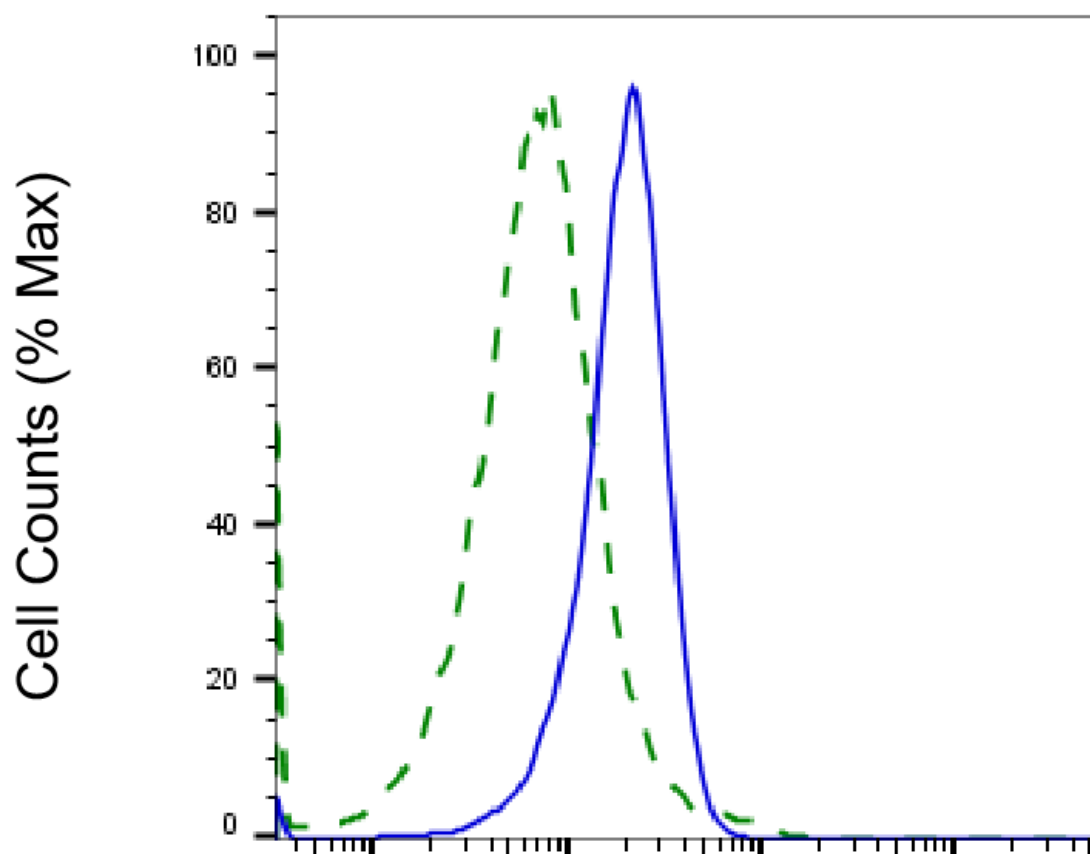
SUPPORT

SUPPORT@GENUINBIOTECH.COM
TEL: +1-540-855-7041

ORDERS

SALES@GENUINBIOTECH.COM
FAX: +1-540-855-7041

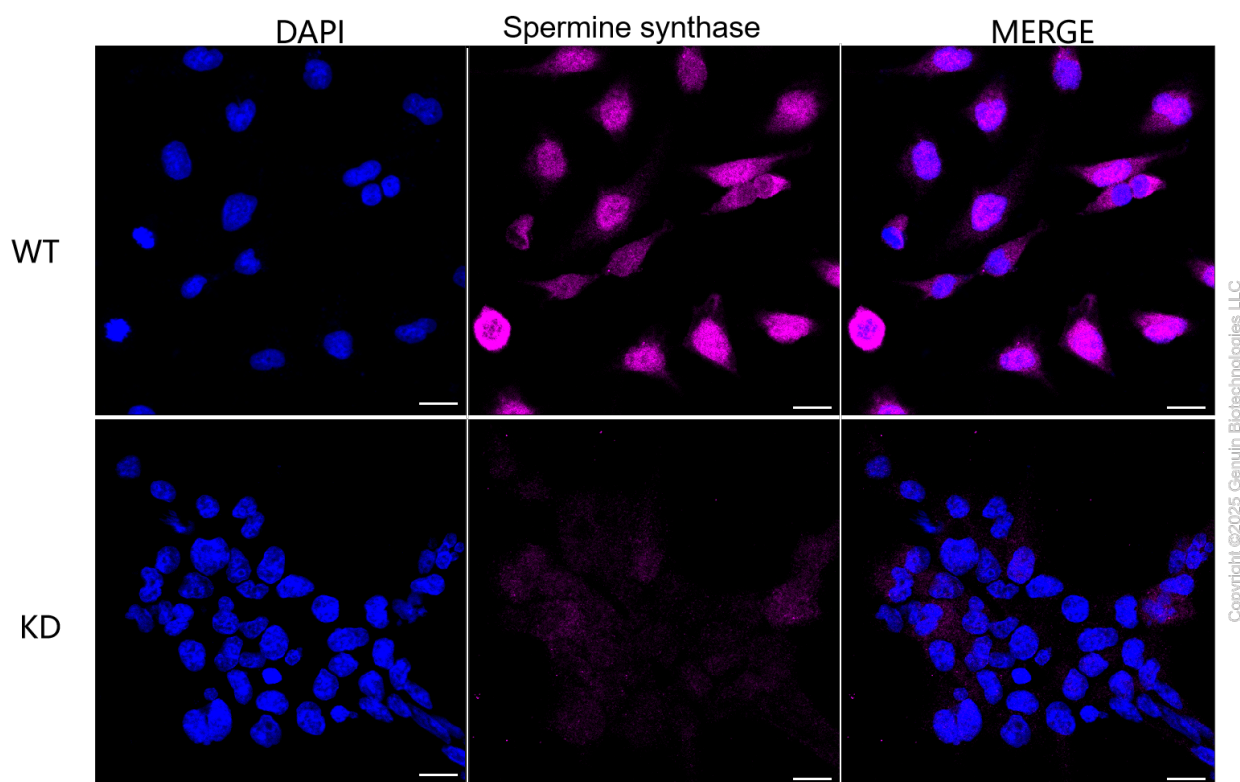
WWW.GENUINBIOTECH.COM



Copyright ©2025 Genuin Biotechnologies LLC

Spermine synthase-Alexa Fluor® 647

Validation of Spermine synthase knockdown using flow cytometry. Wild-type(WT, Blue) and knockdown(KD, Green) HeLa cells were stained with anti-Spermine synthase antibody (Cat#61824, 1:2,000) and analyzed using CytoFLEX.



Immunocytochemical staining of HeLa cells using anti-Spermine synthase antibody (Cat#61824, 1:1,000), Top panel: wild-type (WT); Bottom panel: Spermine synthase shRNA knockdown (KD). Nuclei were stained blue with DAPI; Spermine synthase was stained magenta with Alexa Fluor® 647. Scale bar, 20 μ m. Permeabilization: Triton.