

KD-Validated Anti-MutS Homolog 2 Mouse Monoclonal Antibody



Catalog #: 61826

Aliases

MSH2; MutS Homolog 2; DNA Mismatch Repair Protein Msh2; HNPCC1; HNPCC; MSH-2; COCA1; HMSH2; MutS (E. Coli) Homolog 2 (Colon Cancer, Nonpolyposis Type 1); MutS Homolog 2, Colon Cancer, Nonpolyposis Type 1 (E. Coli); MutS Homolog 2, Colon Cancer, Nonpolyposis Type 1; DNA Mismatch Repair Protein Msh2 Transcript; MutS Protein Homolog 2; MutS-Like 2; LYNCH1; MMRC2; LCFS2; FCC1

Background

Gene Name: MSH2

NCBI Gene Entry: [4436](#)

UniProt Entry: [P43246](#)

Application Information

Molecular Weight: Predicted, 105 kDa; observed, 104 kDa

Clonality: Mouse monoclonal antibody

Clone ID: 25GB3915

Species Reactivity: Human

Applications Tested: Western blotting (WB), flow cytometry (FCM), immunocytochemistry (IC)

Immunogen

Recombinant protein of human MSH2

Isotype

Mouse IgG1

Storage Buffer

Supplied in PBS (pH 7.4) containing 50% glycerol, and 0.02% sodium azide.

Storage

Store at -20 °C for one year.

Recommended Dilutions

Western Blotting (WB): 1:400-1:2,000

Flow Cytometry (FCM): 1:2,000

Immunocytochemistry (IC): 1:100-1:1,000

SUPPORT

SUPPORT@GENUINBIOTECH.COM
TEL: +1-540-855-7041

ORDERS

SALES@GENUINBIOTECH.COM
FAX: +1-540-855-7041

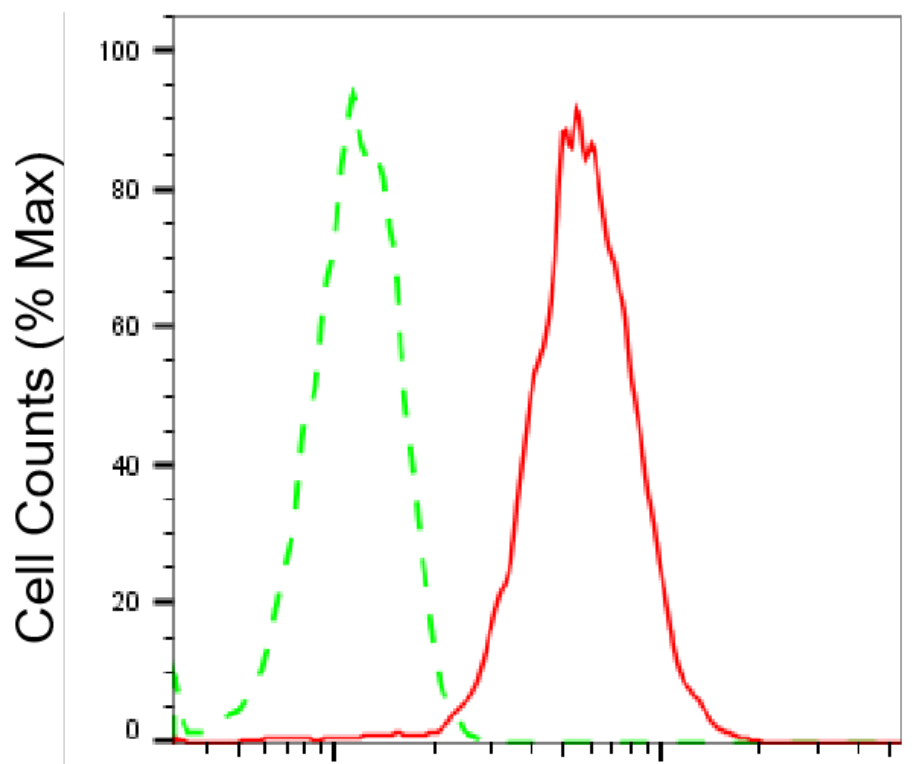
WWW.GENUINBIOTECH.COM

KD-Validated Anti-MutS Homolog 2 Mouse Monoclonal Antibody

PAGE 2

Note: This product is for research use only.

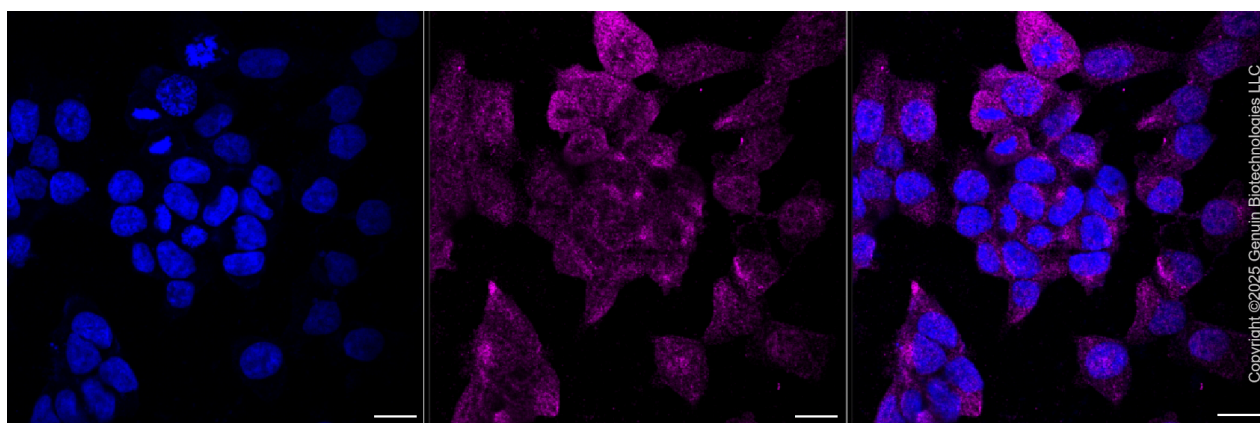
Validation Data



Copyright ©2025 Genuin Biotechnologies LLC

MSH2-Alexa Fluor® 647

Flow cytometric analysis of MSH2 expression in HAP-1 cells using anti-MSH2 antibody (Cat#61826, 1:2,000). Green, isotype control; red, MSH2.



Copyright ©2025 Genuin Biotechnologies LLC

Immunocytochemical staining of HAP-1 cells with anti-MSH2 antibody (Cat#61826, 1:1,000). Nuclei were stained blue with DAPI; MSH2 was stained magenta with Alexa Fluor® 647. Images were taken using Leica stellaris 5. Protein abundance based on laser Intensity and Smart Gain: Medium. Scale bar, 20 µm.

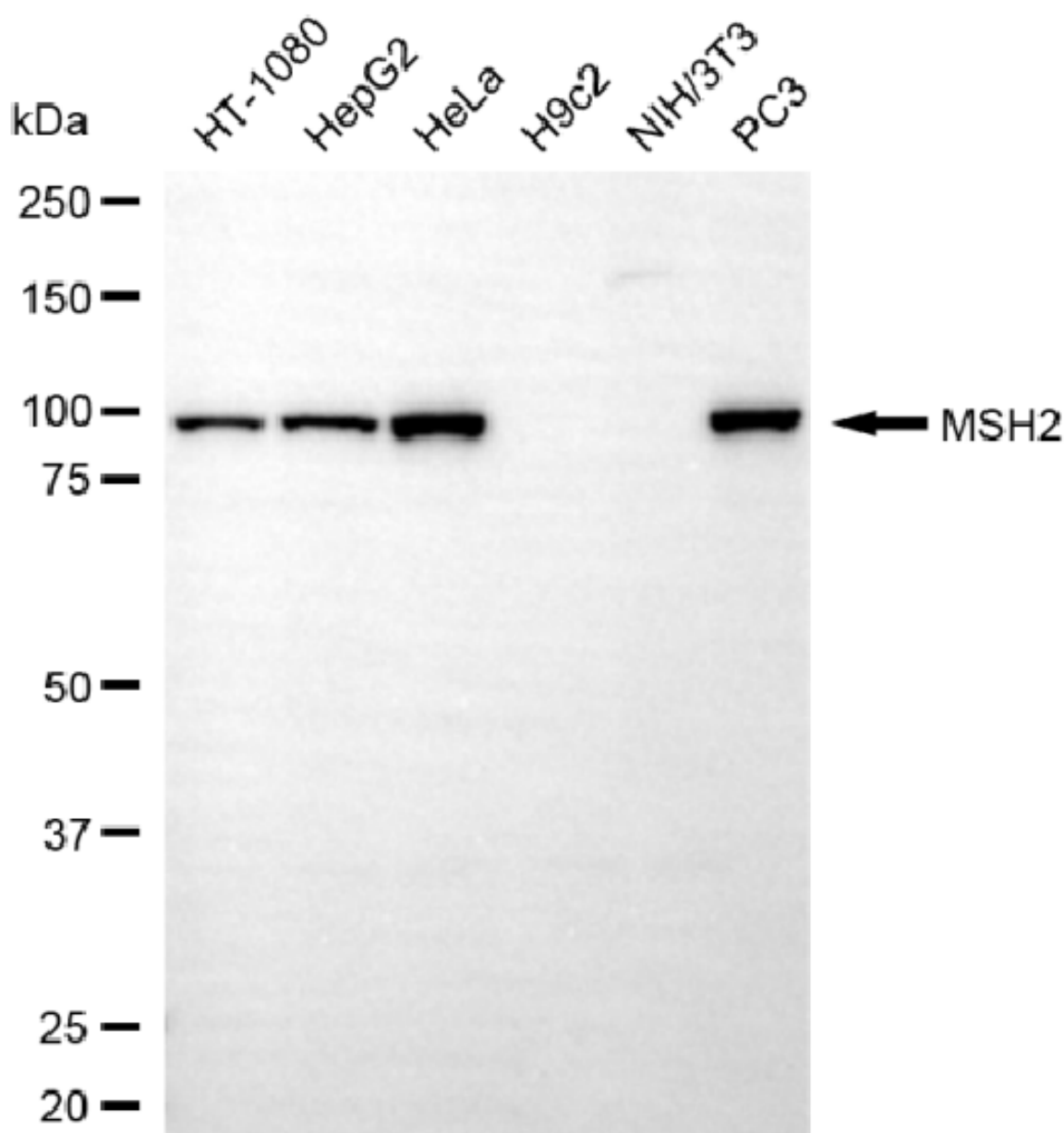
SUPPORT

SUPPORT@GENUINBIOTECH.COM
TEL: +1-540-855-7041

ORDERS

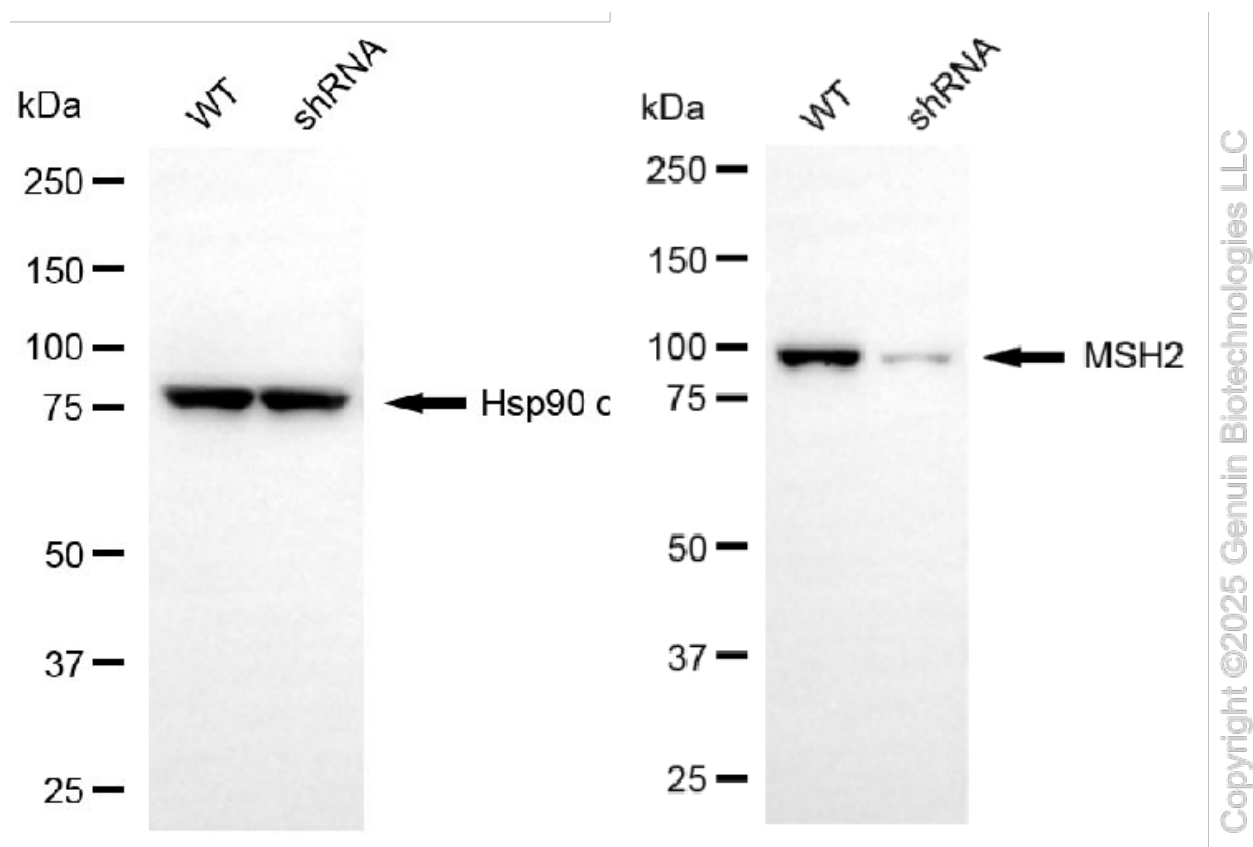
SALES@GENUINBIOTECH.COM
FAX: +1-540-855-7041

WWW.GENUINBIOTECH.COM

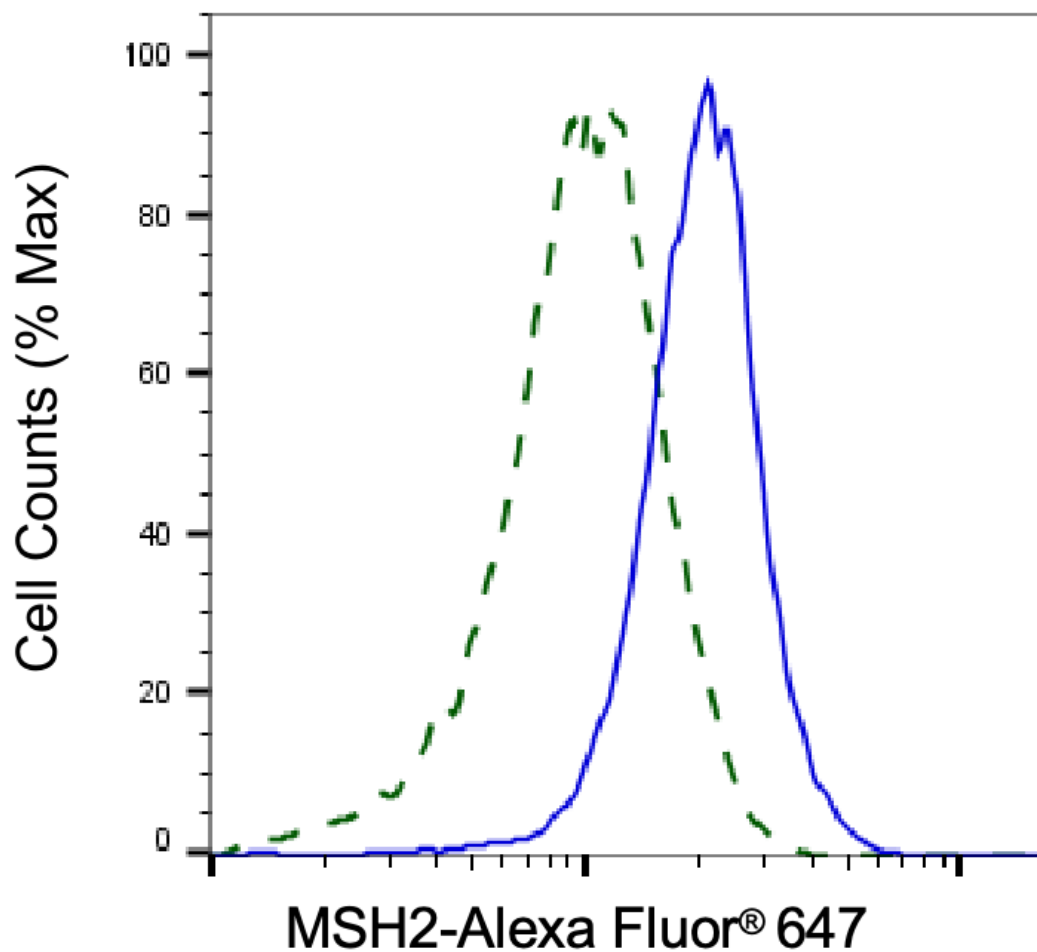


Copyright ©2025 Genuin Biotechnologies LLC

Western blotting analysis using anti-MSH2 antibody (Cat#61826). Total cell lysates (30 μ g) from various cell lines were loaded and separated by SDS-PAGE. The blot was incubated with anti-MSH2 antibody (Cat#61826, 1:2,000) and HRP-conjugated goat anti-mouse secondary antibody (Cat#101, 1:20,000) respectively. Image was developed using NaQ™ ECL Substrate Kit (Cat#716).



Western blotting analysis using anti-MSH2 antibody (Cat#61826). MSH2 expression in wild-type (WT) and MSH2 shRNA knockdown (KD) HeLa cells with 20 μ g of total cell lysates. Hsp90 α serves as a loading control. The blot was incubated with anti-MSH2 antibody (Cat#61826, 1:5,000) and HRP-conjugated goat anti-mouse secondary antibody (Cat#101, 1:20,000) respectively. Image was developed using NaQ™ ECL Substrate Kit (Cat#716).



Copyright ©2025 Genuin Biotechnologies LLC

Validation of MSH2 knockdown using flow cytometry. Wild-type(WT, Blue) and knockdown(KD, Green) HeLa cells were stained with anti-MSH2 antibody (Cat#61826, 1:2,000) and analyzed using BD flow cytometer.