

KD-Validated Anti-Caspase 8 Mouse Monoclonal Antibody



Catalog #: 61830

Aliases

CASP8; Caspase 8; FLICE; MCH5; MACH; Casp-8; Caspase 8, Apoptosis-Related Cysteine Peptidase; Caspase 8, Apoptosis-Related Cysteine Protease; MORT1-Associated Ced-3 Homolog; ICE-Like Apoptotic Protease 5; Apoptotic Cysteine Protease; Apoptotic Protease Mch-5; FADD-Like ICE; Caspase-8; CAP4; FADD-Homologous ICE/CED-3-Like Protease; FADD-Homologous ICE/Ced-3-Like Protease; MACH-Beta-1/2/3/4 Protein; MACH-Alpha-1/2/3 Protein; EC 3.4.22.61; ALPS2B; CASP-8

Background

Gene Name: CASP8

NCBI Gene Entry: [841](#)

UniProt Entry: [Q14790](#)

Application Information

Molecular Weight: Predicted, 55 kDa; observed, 60 kDa

Clonality: Mouse monoclonal antibody

Clone ID: 25GB3930

Species Reactivity: Human, mouse, rat

Applications Tested: Western blotting (WB), flow cytometry (FCM), immunohistochemistry (IHC)

Immunogen

A synthesized peptide derived from human Caspase 8

Isotype

Mouse IgG1

Storage Buffer

Supplied in PBS (pH 7.4) containing 50% glycerol, and 0.02% sodium azide.

Storage

Store at -20 °C for one year.

Recommended Dilutions

Western Blotting (WB): 1:400-1:2,000

Flow Cytometry (FCM): 1:2,000

SUPPORT

SUPPORT@GENUINBIOTECH.COM
TEL: +1-540-855-7041

ORDERS

SALES@GENUINBIOTECH.COM
FAX: +1-540-855-7041

WWW.GENUINBIOTECH.COM

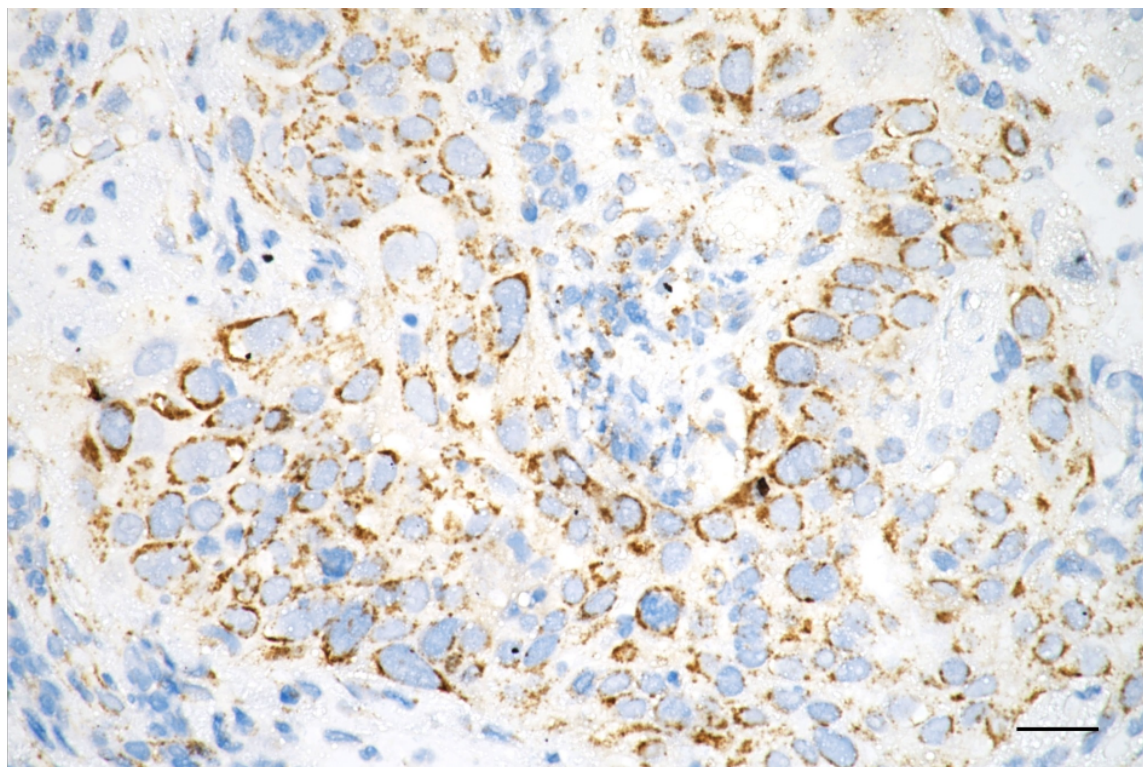
KD-Validated Anti-Caspase 8 Mouse Monoclonal Antibody

PAGE 2

Immunohistochemistry (IHC): 1:50-1:100

Note: This product is for research use only.

Validation Data



Copyright ©2025 Genuin Biotechnologies LLC

Immunohistochemistry was performed on paraffin-embedded human esophageal carcinoma using anti-caspase 8 antibody (Cat#61830, 1:100). Antigen retrieval was done in sodium citrate buffer (pH 6.0). DAB was used for detection, with hematoxylin counterstaining. Images were acquired using a Nikon Ci-L Plus microscope (40× objective). Scale bar: 25 μ m.

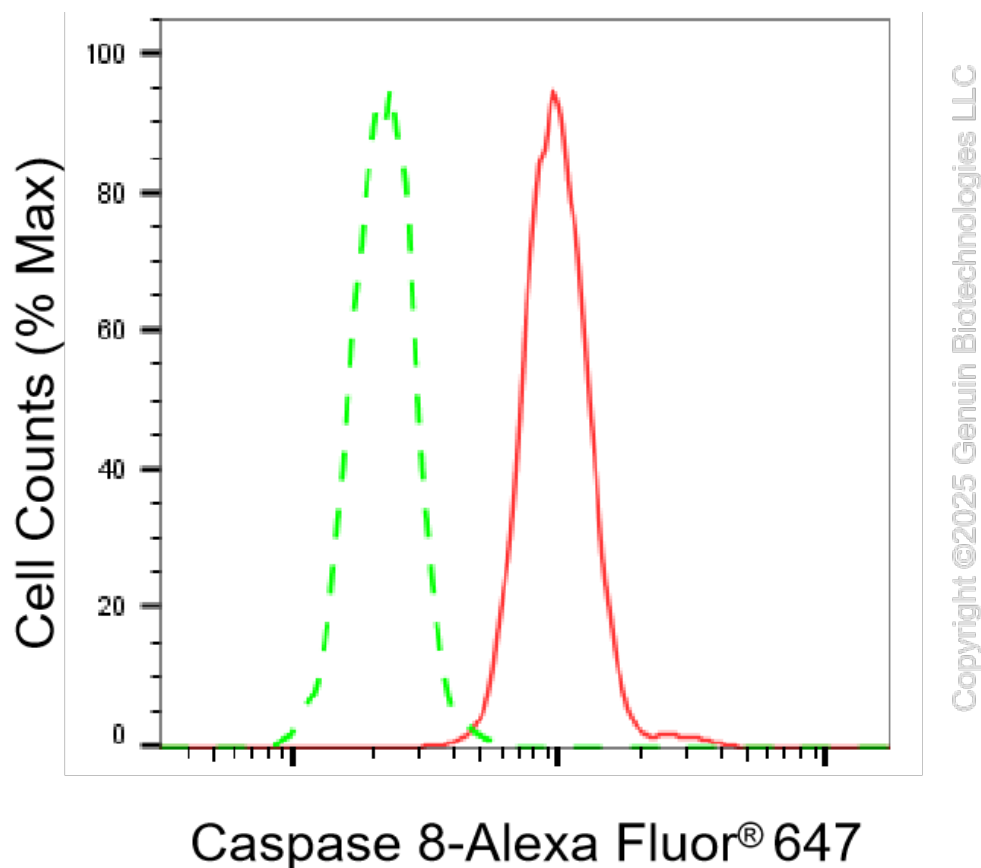
SUPPORT

SUPPORT@GENUINBIOTECH.COM
TEL: +1-540-855-7041

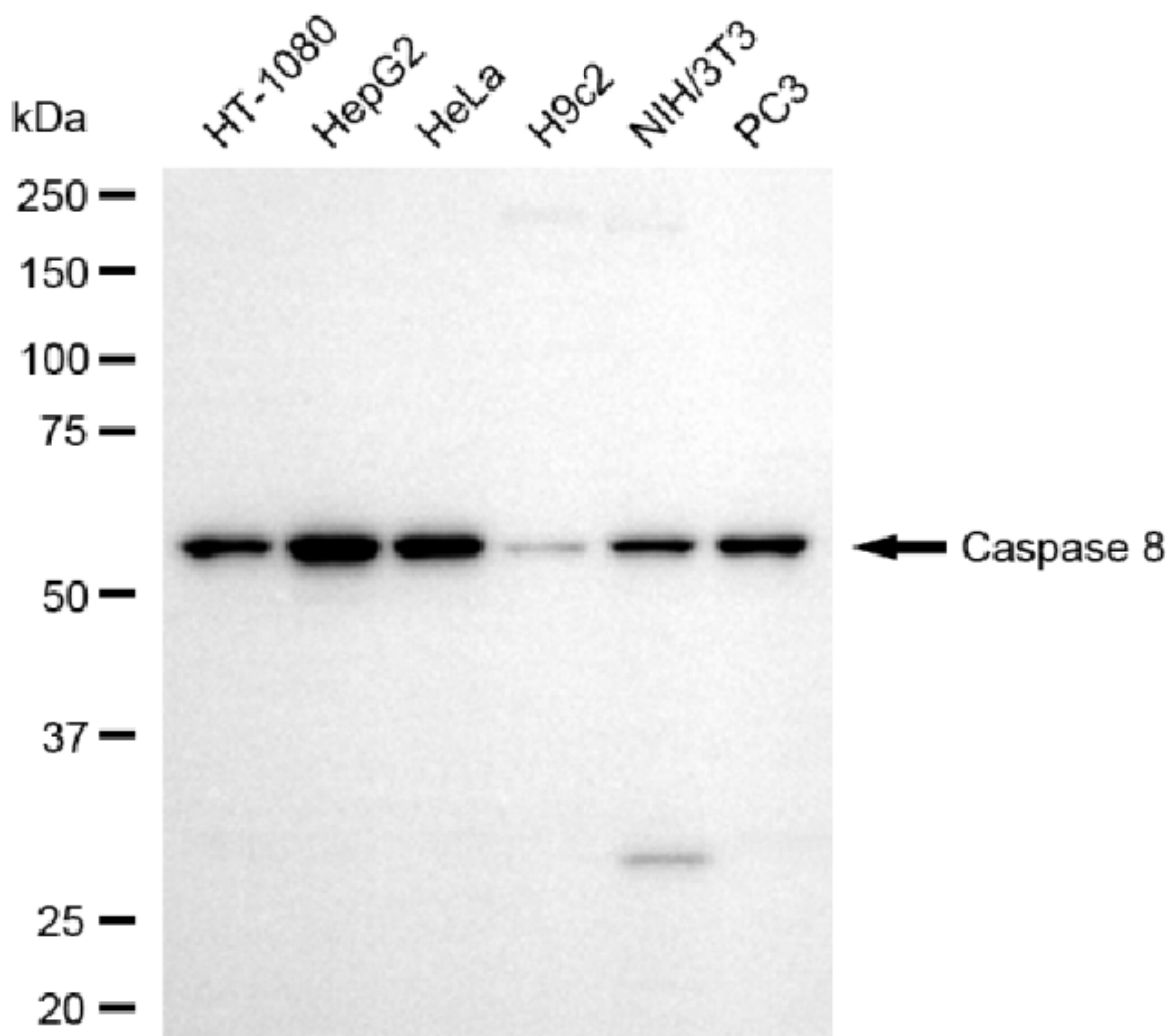
ORDERS

SALES@GENUINBIOTECH.COM
FAX: +1-540-855-7041

WWW.GENUINBIOTECH.COM

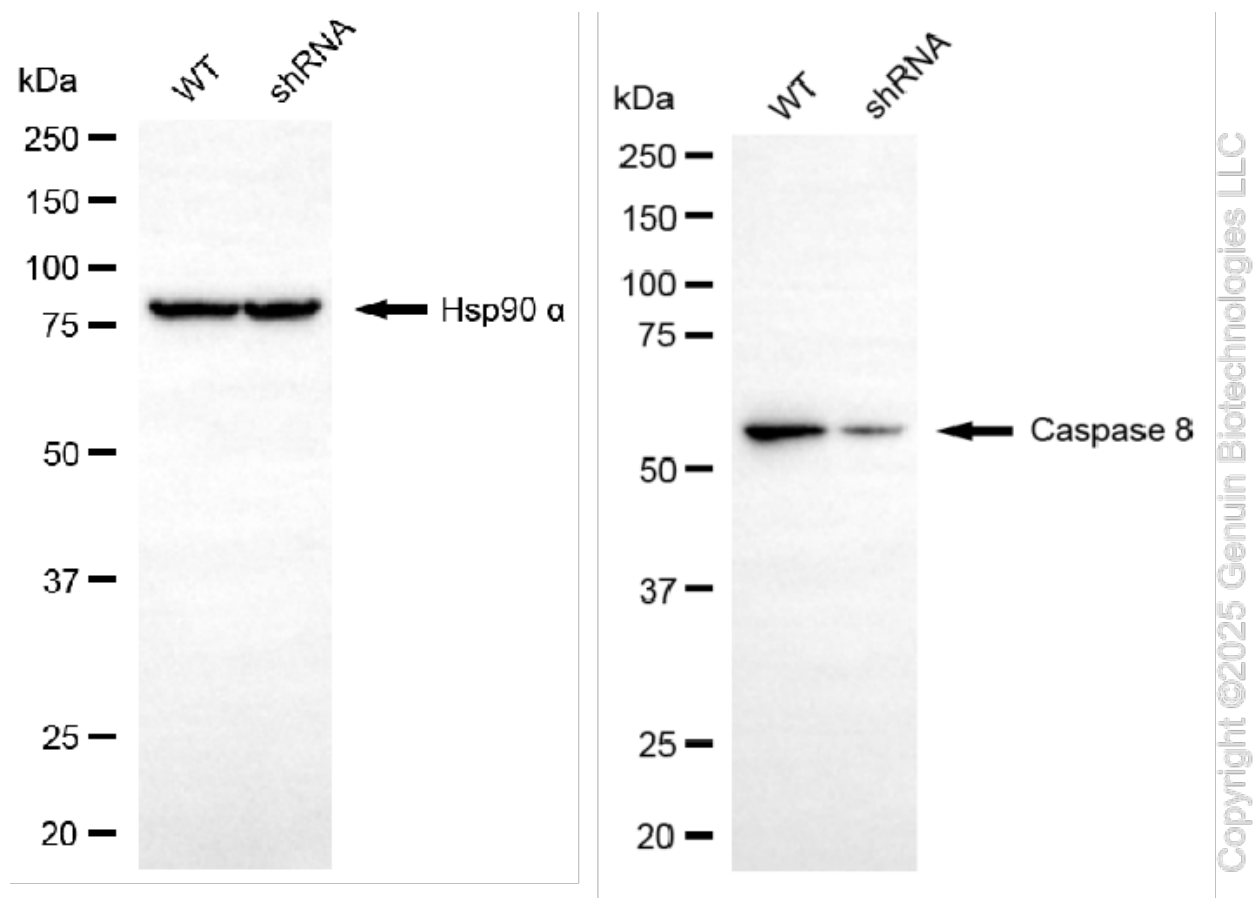


Flow cytometric analysis of Caspase 8 expression in HeLa cells using anti-Caspase 8 antibody (Cat#61830, 1:2,000). Green, isotype control; red, Caspase 8.



Copyright ©2025 Genuin Biotechnologies LLC

Western blotting analysis using anti-caspase 8 antibody (Cat#61830). Total cell lysates (30 µg) from various cell lines were loaded and separated by SDS-PAGE. The blot was incubated with anti-caspase 8 antibody (Cat#61830, 1:2,000) and HRP-conjugated goat anti-mouse secondary antibody (Cat#101, 1:20,000) respectively. Image was developed using FeQ™ ECL Substrate Kit (Cat#226).



Western blotting analysis using anti-caspase 8 antibody (Cat#61830). Caspase 8 expression in wild-type (WT) and caspase 8 (CASP8) shRNA knockdown (KD) HeLa cells with 20 μ g of total cell lysates. Hsp90 α serves as a loading control. The blot was incubated with anti-caspase 8 antibody (Cat#61830, 1:5,000) and HRP-conjugated goat anti-mouse secondary antibody (Cat#101, 1:20,000) respectively. Image was developed using NaQ™ ECL Substrate Kit (Cat#716).