

# KD-Validated Anti-Nesprin3 Recombinant Rabbit Monoclonal Antibody



**Catalog #: 61831**

## Aliases

SYNE3; Spectrin Repeat Containing Nuclear Envelope Family Member 3; Nesprin-3; LINC00341; NET53; Long Intergenic Non-Protein Coding RNA 341; Nuclear Envelope Spectrin Repeat Protein 3; KASH Domain-Containing Protein 3; NCRNA00341; C14orf139; FLJ25605; C14orf49; Nesp3; KASH3; Chromosome 14 Open Reading Frame 139; Chromosome 14 Open Reading Frame 49; Uncharacterized Protein C14orf113; Non-Protein Coding RNA 341; C14ORF139; NESPRIN-3; C14ORF49; NESP3

## Background

Gene Name: SYNE3

NCBI Gene Entry: [161176](#)

UniProt Entry: [Q6ZMZ3](#)

## Application Information

Molecular Weight: Predicted, 112 kDa, observed, 100 kDa

Clonality: Rabbit monoclonal antibody

Clone ID: 23GB4670

Species Reactivity: Human

Applications Tested: Western blotting (WB), immunocytochemistry (IC)

## Immunogen

A synthesized peptide derived from human Nesprin3

## Isotype

Rabbit IgG

## Storage Buffer

Supplied in PBS (pH 7.4) containing 50% glycerol, and 0.02% sodium azide.

## Storage

Store at -20 °C for one year.

## Recommended Dilutions

Western Blotting (WB): 1:1,000-1:5,000

Immunocytochemistry (IC): 1:100-1:1,000

---

### SUPPORT

SUPPORT@GENUINBIOTECH.COM  
TEL: +1-540-855-7041

### ORDERS

SALES@GENUINBIOTECH.COM  
FAX: +1-540-855-7041

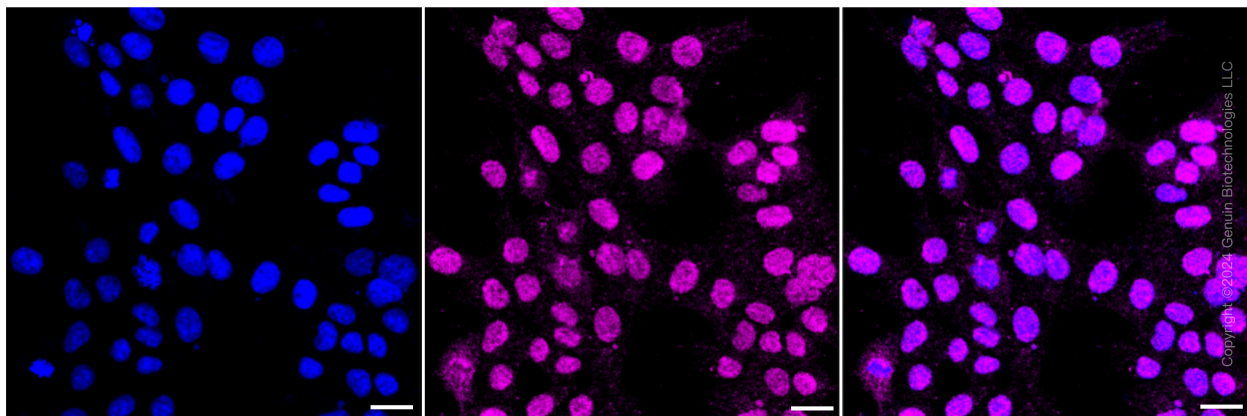
[WWW.GENUINBIOTECH.COM](http://WWW.GENUINBIOTECH.COM)

## KD-Validated Anti-Nesprin3 Recombinant Rabbit Monoclonal Antibody

PAGE 2

**Note:** This product is for research use only.

### Validation Data



Immunocytochemical staining of HAP-1 cells with Nesprin3 antibody (Cat#61831, 1:1,000). Nuclei were stained blue with DAPI; Nesprin3 was stained magenta with Alexa Fluor® 647. Images were taken using Leica stellaris 5. Protein abundance based on laser Intensity and smart gain: Low. Scale bar: 20  $\mu$ m.

---

#### SUPPORT

SUPPORT@GENUINBIOTECH.COM  
TEL: +1-540-855-7041

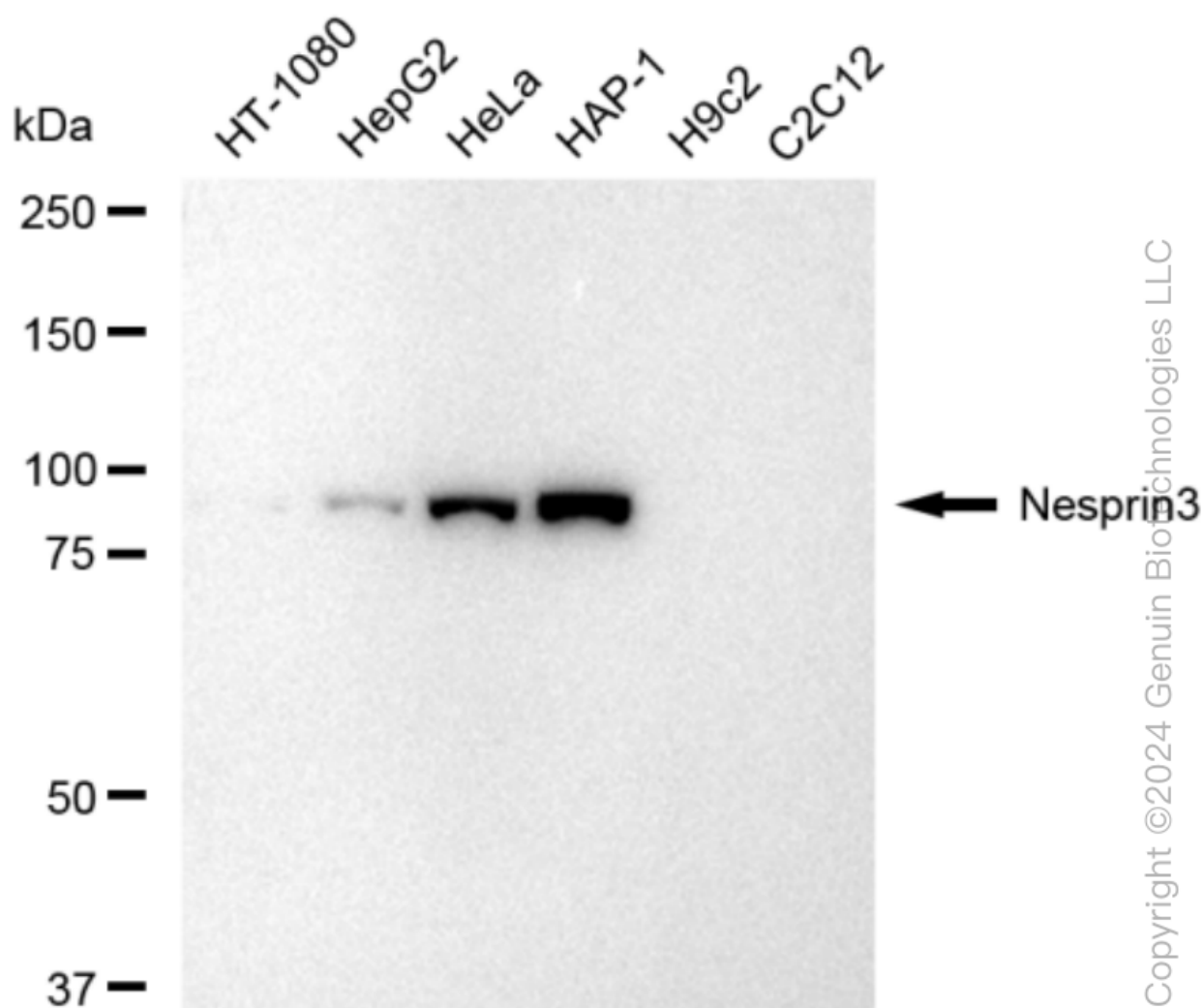
#### ORDERS

SALES@GENUINBIOTECH.COM  
FAX: +1-540-855-7041

[WWW.GENUINBIOTECH.COM](http://WWW.GENUINBIOTECH.COM)

## KD-Validated Anti-Nesprin3 Recombinant Rabbit Monoclonal Antibody

PAGE 3



Western blotting analysis using anti-Nesprin3 antibody (Cat#61831). Total cell lysates (30  $\mu$ g) from various cell lines were loaded and separated by SDS-PAGE. The blot was incubated with anti-Nesprin3 antibody (Cat#61831, 1:5,000) and HRP-conjugated goat anti-rabbit secondary antibody (Cat#201, 1:20,000) respectively. Image was developed using FeQ™ ECL Substrate Kit (Cat#226).

### SUPPORT

SUPPORT@GENUINBIOTECH.COM  
TEL: +1-540-855-7041

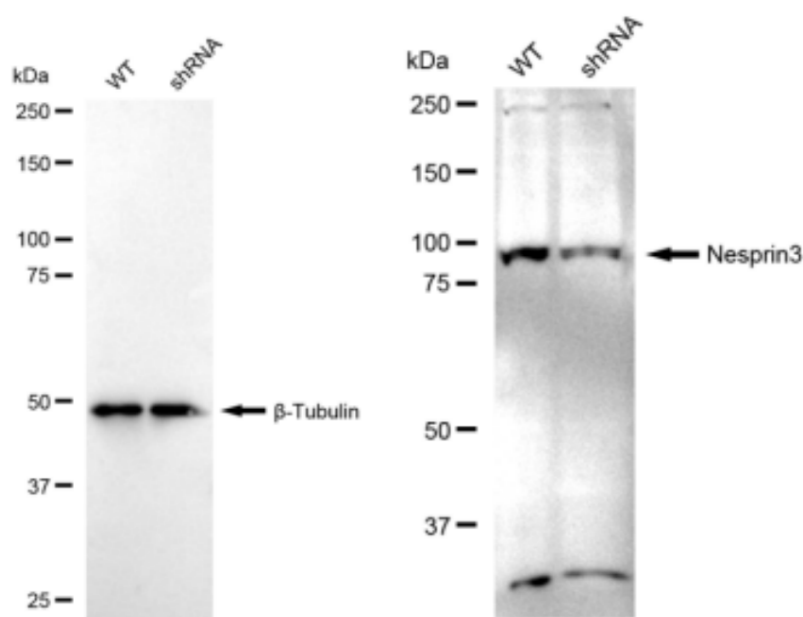
### ORDERS

SALES@GENUINBIOTECH.COM  
FAX: +1-540-855-7041

WWW.GENUINBIOTECH.COM

## KD-Validated Anti-Nesprin3 Recombinant Rabbit Monoclonal Antibody

PAGE 4



Copyright ©2024 Genuin Biotechnologies LLC

Western blotting analysis using anti-Nesprin3 antibody (Cat#61831). Nesprin3 expression in wild type (WT) and Nesprin3 shRNA knockdown (KD) HT-1080 cells with 30 µg of total cell lysates. β-Tubulin serves as a loading control. The blot was incubated with anti-Nesprin3 antibody (Cat#61831, 1:5,000) and HRP-conjugated goat anti-rabbit secondary antibody (Cat#201, 1:20,000) respectively. Image was developed using FeQ™ ECL Substrate Kit (Cat#226).

### SUPPORT

SUPPORT@GENUINBIOTECH.COM  
TEL: +1-540-855-7041

### ORDERS

SALES@GENUINBIOTECH.COM  
FAX: +1-540-855-7041

[WWW.GENUINBIOTECH.COM](http://WWW.GENUINBIOTECH.COM)