

# KD-Validated Anti-Synaptophysin like 1 Recombinant Rabbit Monoclonal Antibody



**Catalog #: 61832**

## Aliases

SYPL1; Synaptophysin Like 1; Pantophysin; SYPL; Synaptophysin-Like Protein 1; Synaptophysin-Like Protein; Synaptophysin-Like 1; H-SP1

## Background

Gene Name: SYPL1

NCBI Gene Entry: [6856](#)

UniProt Entry: [Q16563](#)

## Application Information

Molecular Weight: Predicted, 29 kDa, observed, 29-37 kDa

Clonality: Rabbit monoclonal antibody

Clone ID: 23GB4675

Species Reactivity: Human

Applications Tested: Western blotting (WB), flow cytometry (FCM), immunocytochemistry (IC)

## Immunogen

A synthesized peptide derived from human SYPL1

## Isotype

Rabbit IgG

## Storage Buffer

Supplied in PBS (pH 7.4) containing 50% glycerol, and 0.02% sodium azide.

## Storage

Store at -20 °C for one year.

## Recommended Dilutions

Western Blotting (WB): 1:1,000-1:5,000

Flow Cytometry (FCM): 1:2,000

Immunocytochemistry (IC): 1:100-1:1,000

**Note:** This product is for research use only.

## Validation Data

---

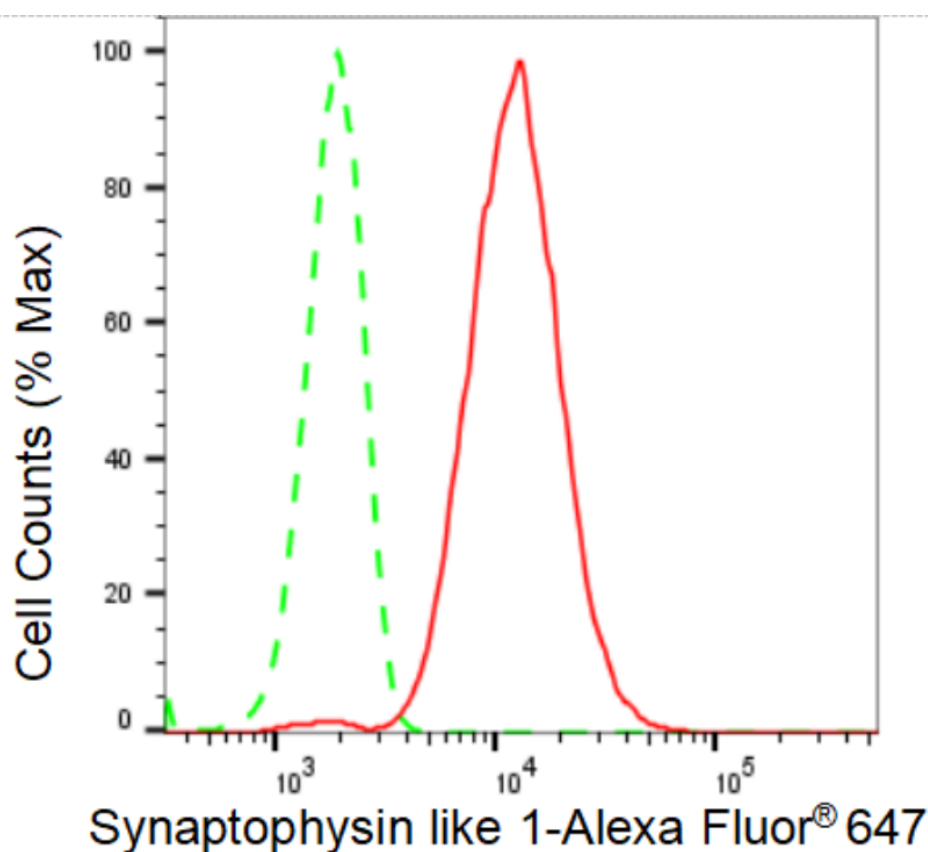
### SUPPORT

SUPPORT@GENUINBIOTECH.COM  
TEL: +1-540-855-7041

### ORDERS

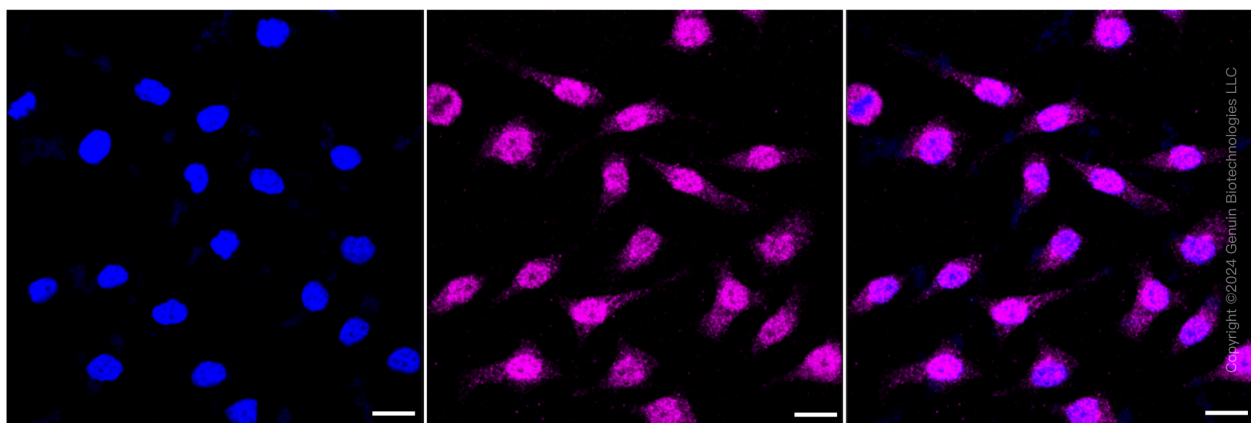
SALES@GENUINBIOTECH.COM  
FAX: +1-540-855-7041

[WWW.GENUINBIOTECH.COM](http://WWW.GENUINBIOTECH.COM)



Copyright ©2024 Genuin Biotechnologies LLC

Flow cytometric analysis of Synaptophysin like 1 expression in HeLa cells using Synaptophysin like 1 antibody (Cat#61832, 1:2,000). Green, isotype control; red, Synaptophysin like 1.



Immunocytochemical staining of HeLa cells with Synaptophysin like 1 antibody (Cat#61832, 1:1,000). Nuclei were stained blue with DAPI; Synaptophysin like 1 was stained magenta with Alexa Fluor® 647. Images were taken using Leica stellaris 5. Protein abundance based on laser Intensity and smart gain: Medium. Scale bar: 20  $\mu$ m.

**SUPPORT**

SUPPORT@GENUINBIOTECH.COM  
TEL: +1-540-855-7041

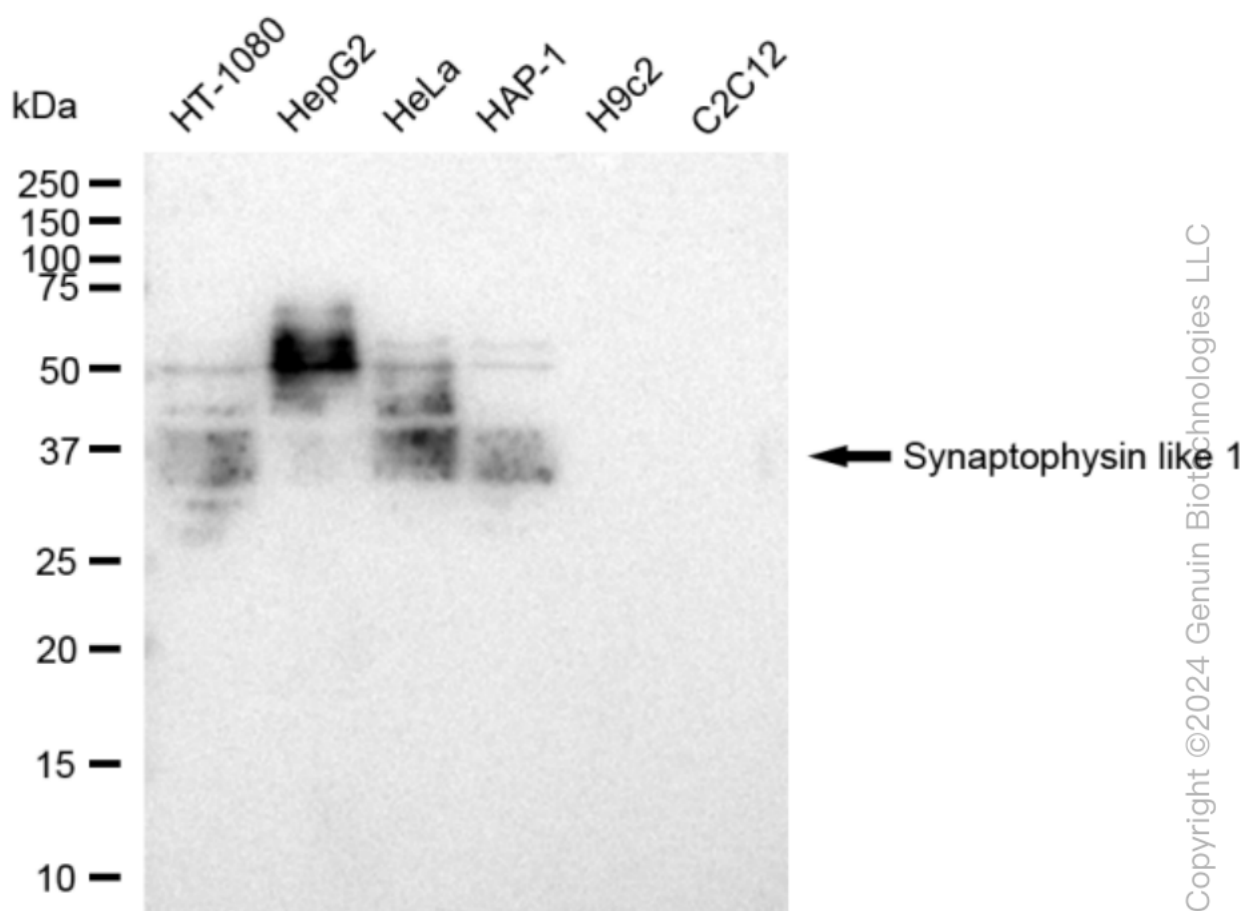
**ORDERS**

SALES@GENUINBIOTECH.COM  
FAX: +1-540-855-7041

**WWW.GENUINBIOTECH.COM**

## KD-Validated Anti-Synaptophysin like 1 Recombinant Rabbit Monoclonal Antibody

PAGE 3



Western blotting analysis using anti-Synaptophysin like 1 antibody (Cat#61832). Total cell lysates (30  $\mu$ g) from various cell lines were loaded and separated by SDS-PAGE. The blot was incubated with anti-Synaptophysin like 1 antibody (Cat#61832, 1:5,000) and HRP-conjugated goat anti-rabbit secondary antibody (Cat#201, 1:20,000) respectively. Image was developed using FeQ<sup>TM</sup> ECL Substrate Kit (Cat#226).

### SUPPORT

SUPPORT@GENUINBIOTECH.COM  
TEL: +1-540-855-7041

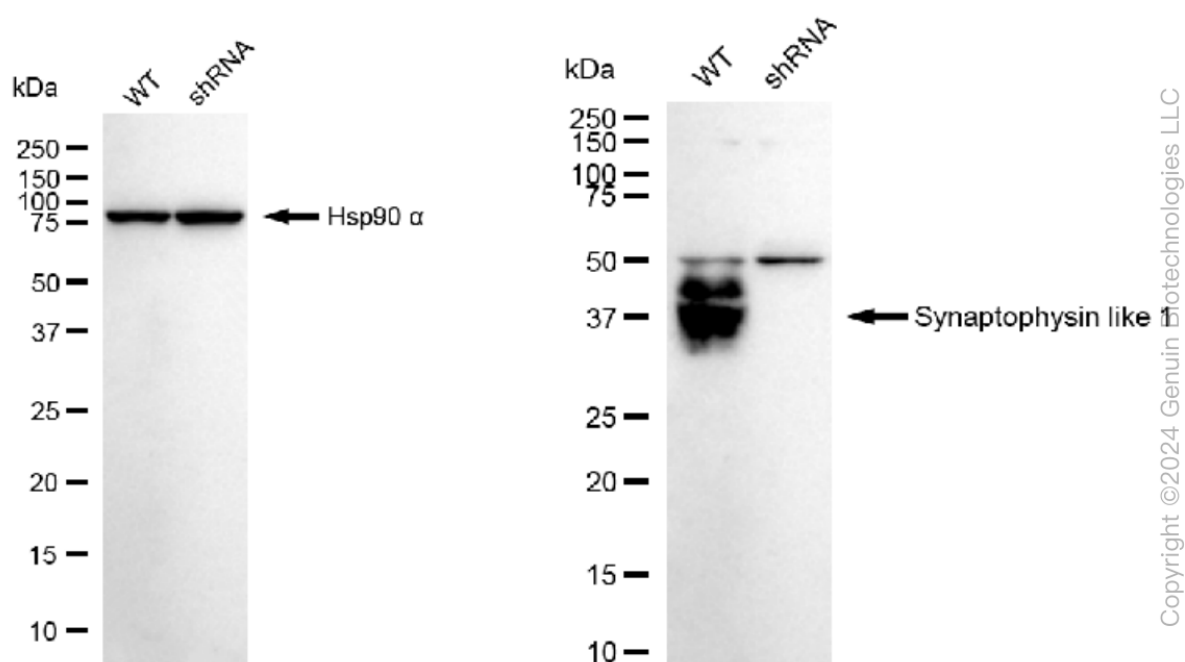
### ORDERS

SALES@GENUINBIOTECH.COM  
FAX: +1-540-855-7041

WWW.GENUINBIOTECH.COM

## KD-Validated Anti-Synaptophysin like 1 Recombinant Rabbit Monoclonal Antibody

PAGE 4



Western blotting analysis using anti-Synaptophysin like 1 antibody (Cat#61832). Synaptophysin like 1 expression in wild type (WT) and Synaptophysin like 1 shRNA knockdown (KD) HeLa cells with 30 µg of total cell lysates. Hsp90 α serves as a loading control. The blot was incubated with anti-Synaptophysin like 1 antibody (Cat#61832, 1:5,000) and HRP-conjugated goat anti-rabbit secondary antibody (Cat#201, 1:20,000) respectively. Image was developed using FeQ™ ECL Substrate Kit (Cat#226).

### SUPPORT

SUPPORT@GENUINBIOTECH.COM  
TEL: +1-540-855-7041

### ORDERS

SALES@GENUINBIOTECH.COM  
FAX: +1-540-855-7041

[WWW.GENUINBIOTECH.COM](http://WWW.GENUINBIOTECH.COM)