

KD-Validated Anti-Dihydropyrimidinase Like 5 Mouse Monoclonal Antibody



Catalog #: 61833

Aliases

DPYSL5; Dihydropyrimidinase Like 5; CRMP-5; CRMP5; CRAM; Ulip6; CV2; Collapsin Response Mediator Protein 5; Dihydropyrimidinase-Related Protein 5; UNC33-Like Phosphoprotein 6; CRMP3-Associated Molecule; ULIP-6; DRP-5; Collapsin Response Mediator Protein-5; Dihydropyrimidinase-Like 5; RTSC4; ULIP6

Background

Gene Name: DPYSL5

NCBI Gene Entry: [56896](#)

UniProt Entry: [Q9BPU6](#)

Application Information

Molecular Weight: Predicted, 61 kDa; observed, 61 kDa

Clonality: Mouse monoclonal antibody

Clone ID: 25GB3935

Species Reactivity: Human, rat

Applications Tested: Western blotting (WB), flow cytometry (FCM), immunocytochemistry (IC)

Immunogen

Recombinant protein of human CRMP-5

Isotype

Mouse IgG1 kappa

Storage Buffer

Supplied in PBS (pH 7.4) containing 50% glycerol, and 0.02% sodium azide.

Storage

Store at -20 °C for one year.

Recommended Dilutions

Western Blotting (WB): 1:500-1:2,500

Flow Cytometry (FCM): 1:2,000

Immunocytochemistry (IC): 1:100-1:1,000

SUPPORT

SUPPORT@GENUINBIOTECH.COM
TEL: +1-540-855-7041

ORDERS

SALES@GENUINBIOTECH.COM
FAX: +1-540-855-7041

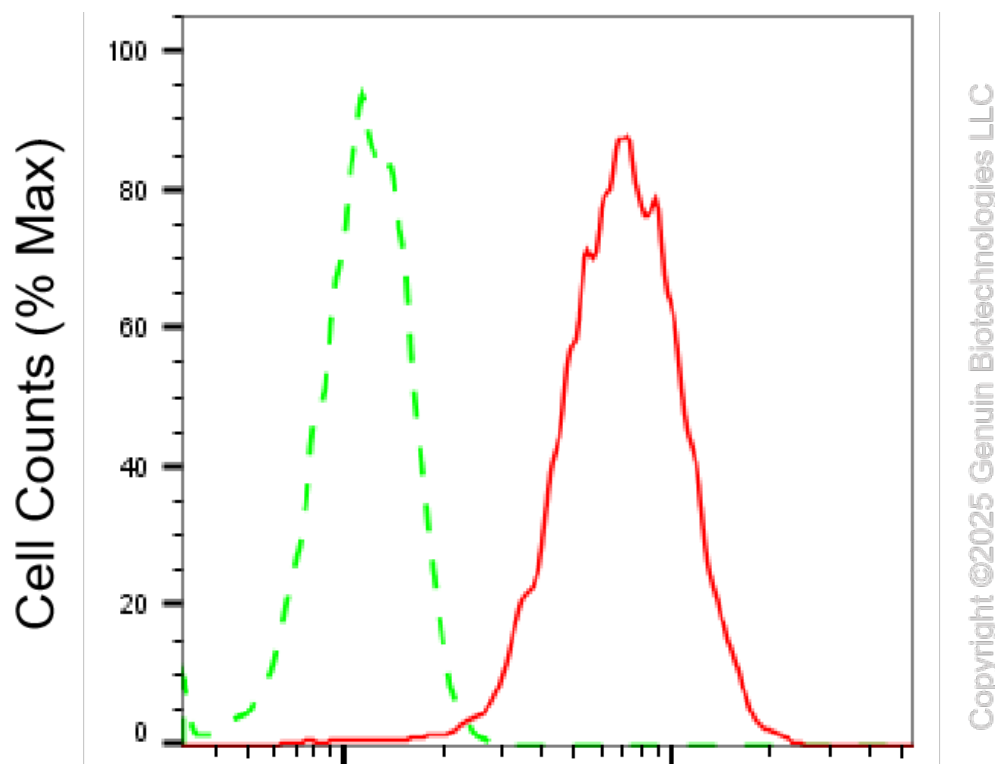
WWW.GENUINBIOTECH.COM

KD-Validated Anti-Dihydropyrimidinase Like 5 Mouse Monoclonal Antibody

PAGE 2

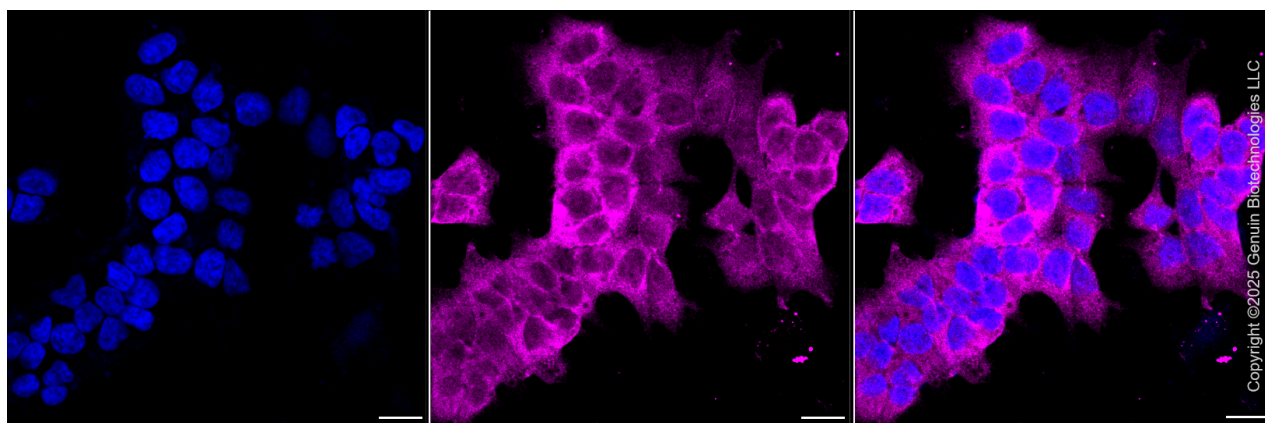
Note: This product is for research use only.

Validation Data



Dihydropyrimidinase like 5-Alexa Fluor® 647

Flow cytometric analysis of Dihydropyrimidinase like 5 expression in HAP-1 cells using anti-Dihydropyrimidinase like 5 antibody (Cat#61833, 1:2,000). Green, isotype control; red, Dihydropyrimidinase like 5.



Immunocytochemical staining of HAP1 cells with anti-Dihydropyrimidinase like 5 antibody (Cat#61833, 1:1,000). Nuclei were stained blue with DAPI; Dihydropyrimidinase like 5 was stained magenta with Alexa Fluor® 647. Images were taken using Leica stellaris 5. Protein

SUPPORT

SUPPORT@GENUINBIOTECH.COM
TEL: +1-540-855-7041

ORDERS

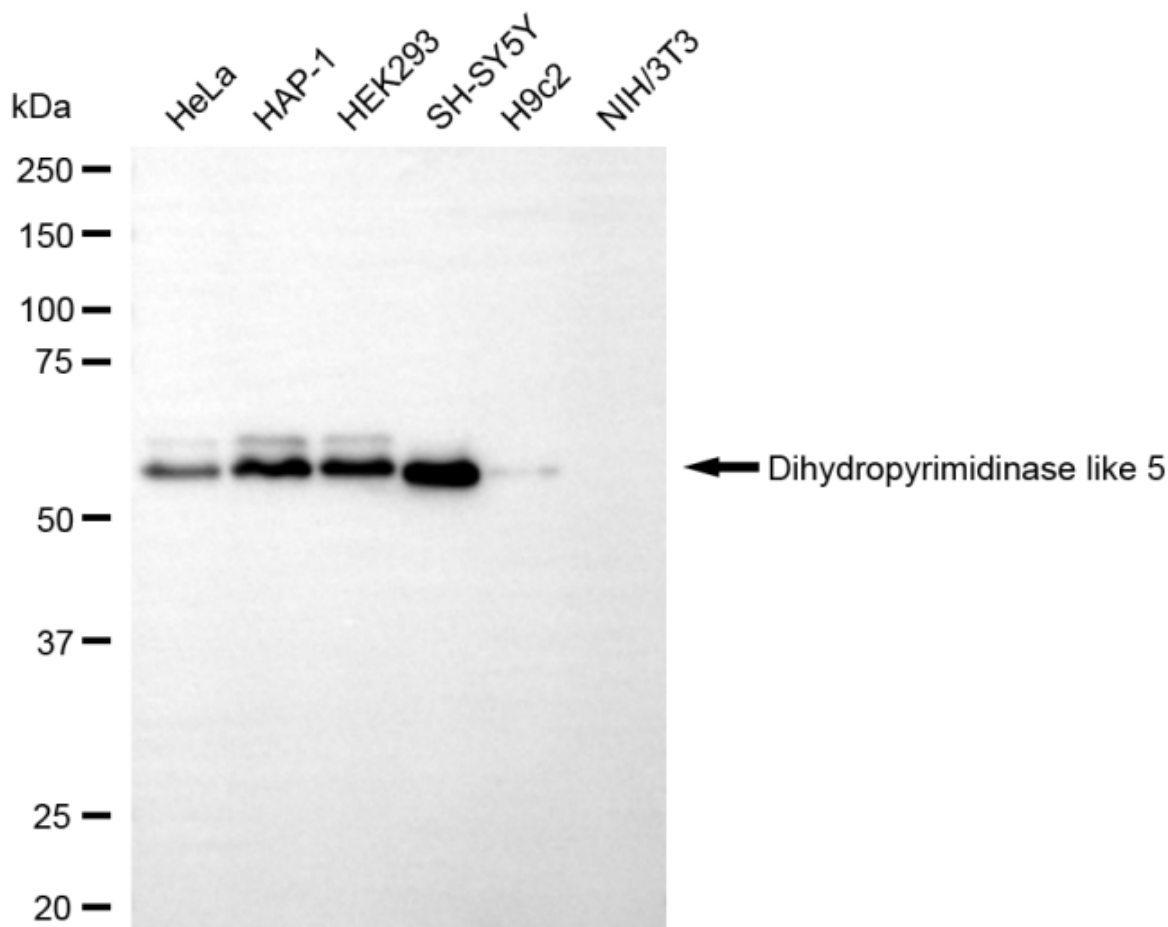
SALES@GENUINBIOTECH.COM
FAX: +1-540-855-7041

WWW.GENUINBIOTECH.COM

KD-Validated Anti-Dihydropyrimidinase Like 5 Mouse Monoclonal Antibody

PAGE 3

abundance based on laser Intensity and smart gain: Medium. Scale bar, 20 μ m.



Western blotting analysis using anti-dihydropyrimidinase like 5 antibody (Cat#61833). Total cell lysates (30 μ g) from various cell lines were loaded and separated by SDS-PAGE. The blot was incubated with anti-dihydropyrimidinase like 5 antibody (Cat#61833, 1:2,500) and HRP-conjugated goat anti-mouse secondary antibody (Cat#101, 1:20,000) respectively. Image was developed using NaQ™ ECL Substrate Kit (Cat#716).

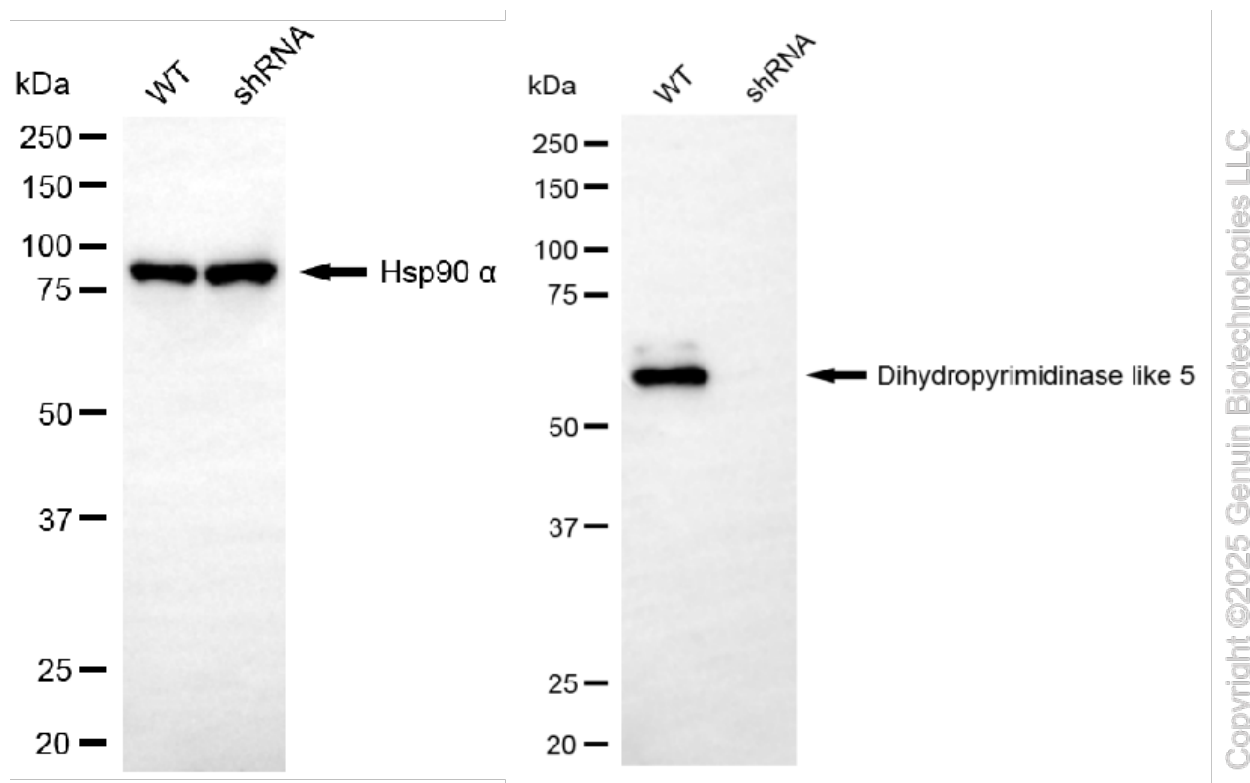
SUPPORT

SUPPORT@GENUINBIOTECH.COM
TEL: +1-540-855-7041

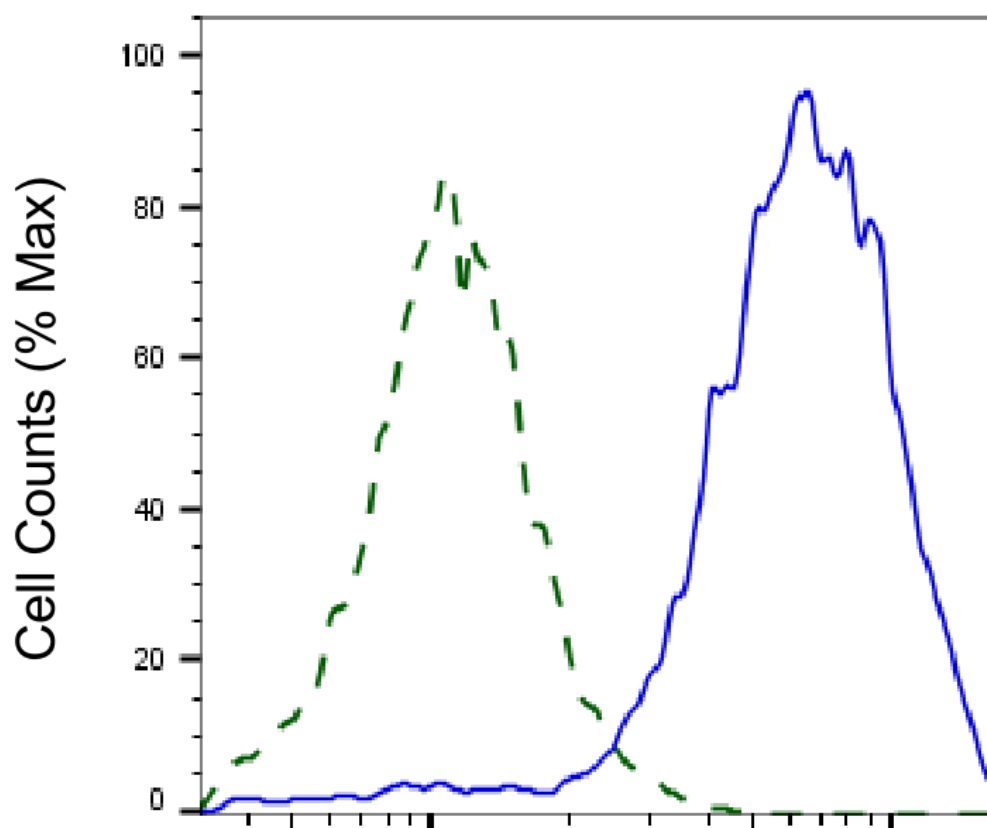
ORDERS

SALES@GENUINBIOTECH.COM
FAX: +1-540-855-7041

WWW.GENUINBIOTECH.COM



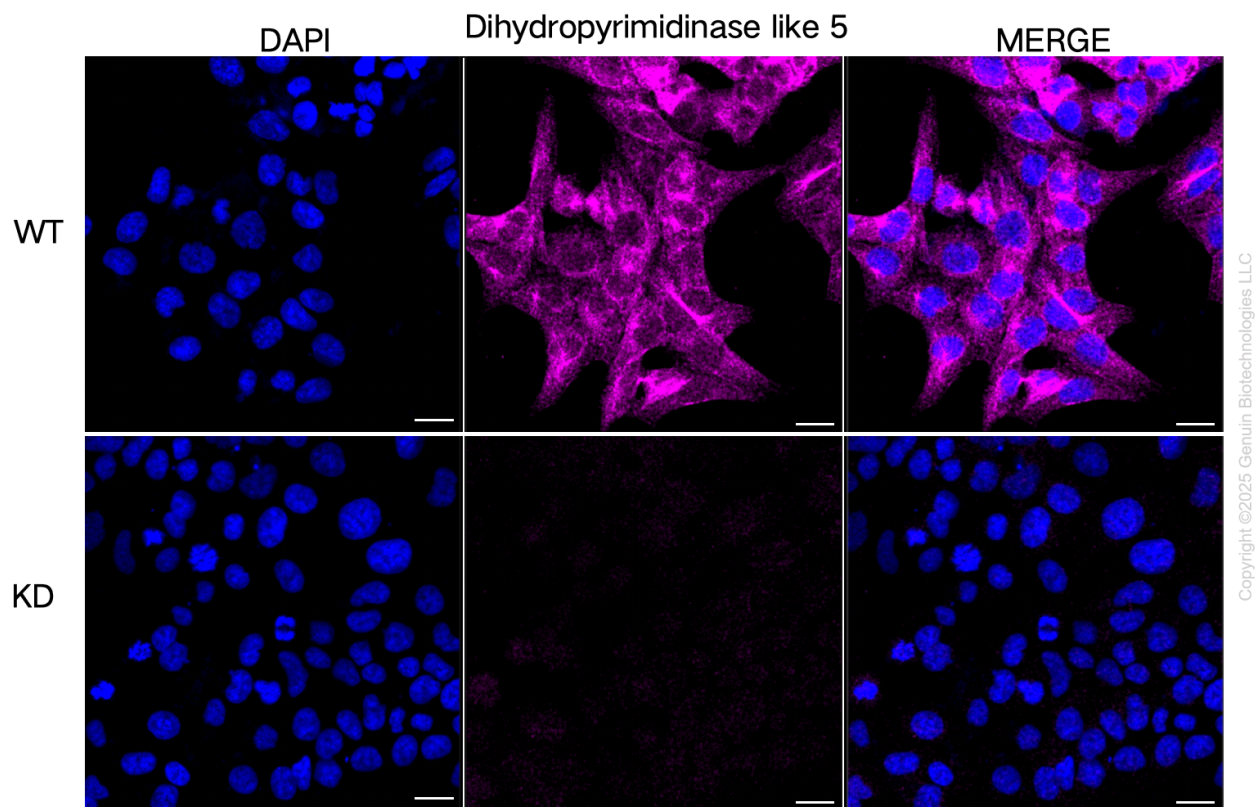
Western blotting analysis using anti-dihydropyrimidinase like 5 antibody (Cat#61833). Dihydropyrimidinase like 5 expression in wild-type (WT) and dihydropyrimidinase like 5 (DPYSL5) shRNA knockdown (KD) HSHC cells with 20 μ g of total cell lysates. Hsp90 α serves as a loading control. The blot was incubated with anti-dihydropyrimidinase like 5 antibody (Cat#61833, 1:5,000) and HRP-conjugated goat anti-mouse secondary antibody (Cat#101, 1:20,000) respectively. Image was developed using FeQ™ ECL Substrate Kit (Cat#226).



Copyright ©2025 Genuin Biotechnologies LLC

Dihydropyrimidinase like 5-Alexa Fluor® 647

Validation of Dihydropyrimidinase like 5 knockdown using flow cytometry. Wild-type(WT, Blue) and knockdown(KD, Green) HSHC cells were stained with anti-Dihydropyrimidinase like 5 antibody (Cat#61833, 1:2,000) and analyzed using BD flow cytometer.



Immunocytochemical staining of HSHC cells using anti-Dihydropyrimidinase like 5 antibody (Cat#61833, 1:1,000), Top panel: wild-type (WT); Bottom panel: Dihydropyrimidinase like 5 shRNA knockdown (KD). Nuclei were stained blue with DAPI; Dihydropyrimidinase like 5 was stained magenta with Alexa Fluor® 647. Scale bar, 20 μ m.