

KD-Validated Anti-C17orf58 Mouse Monoclonal Antibody



Catalog #: 61840

Aliases

C17orf58; Chromosome 17 Open Reading Frame 58; UPF0450 Protein C17orf58

Background

Gene Name: C17orf58

NCBI Gene Entry: [284018](#)

UniProt Entry: [Q2M2W7](#)

Application Information

Molecular Weight: Predicted, 37 kDa; observed, 35 kDa

Clonality: Mouse monoclonal antibody

Clone ID: 25GB3975

Species Reactivity: Human, mouse, rat

Applications Tested: Western blotting (WB), flow cytometry (FCM), immunocytochemistry (IC)

Immunogen

Recombinant protein of human C17orf58

Isotype

Mouse IgG2b

Storage Buffer

Supplied in PBS (pH 7.4) containing 50% glycerol, and 0.02% sodium azide.

Storage

Store at -20 °C for one year.

Recommended Dilutions

Western Blotting (WB): 1:500-1:2,500

Flow Cytometry (FCM): 1:1,000

Immunocytochemistry (IC): 1:100-1:1,000

Note: This product is for research use only.

Validation Data

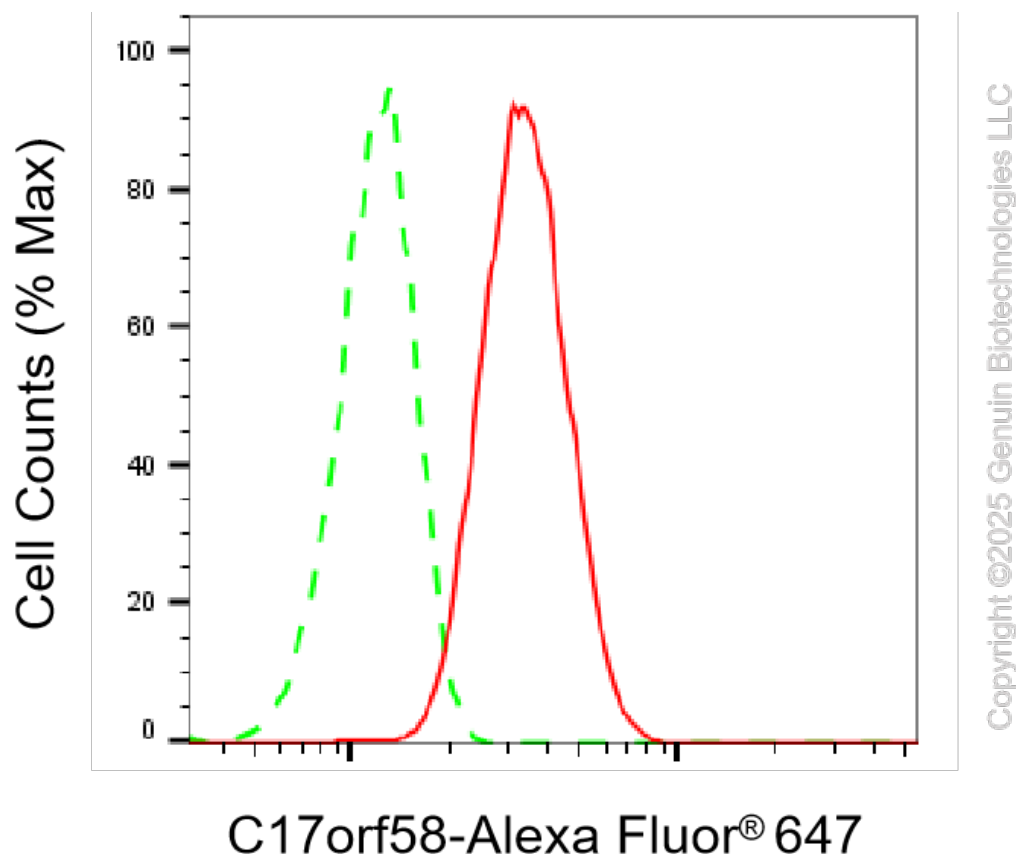
SUPPORT

SUPPORT@GENUINBIOTECH.COM
TEL: +1-540-855-7041

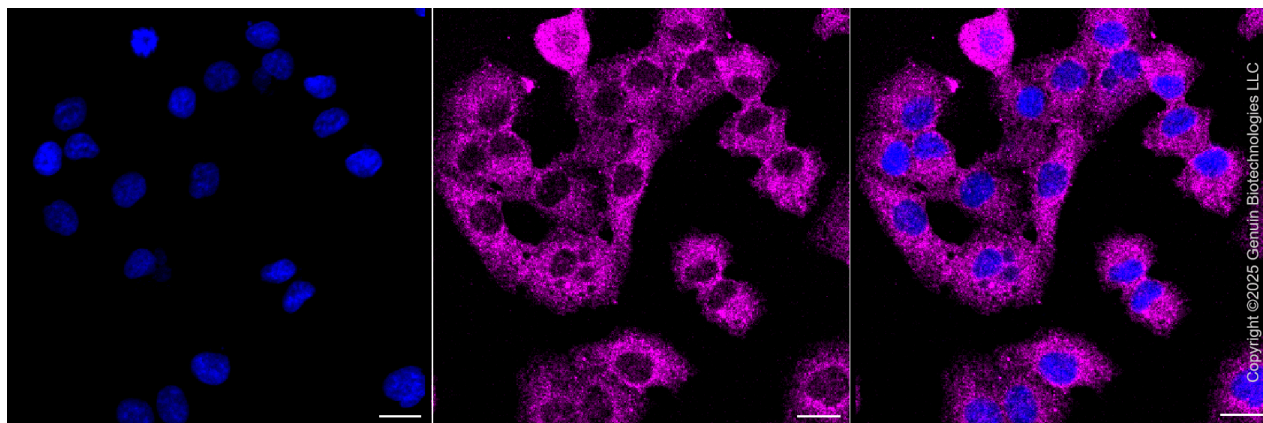
ORDERS

SALES@GENUINBIOTECH.COM
FAX: +1-540-855-7041

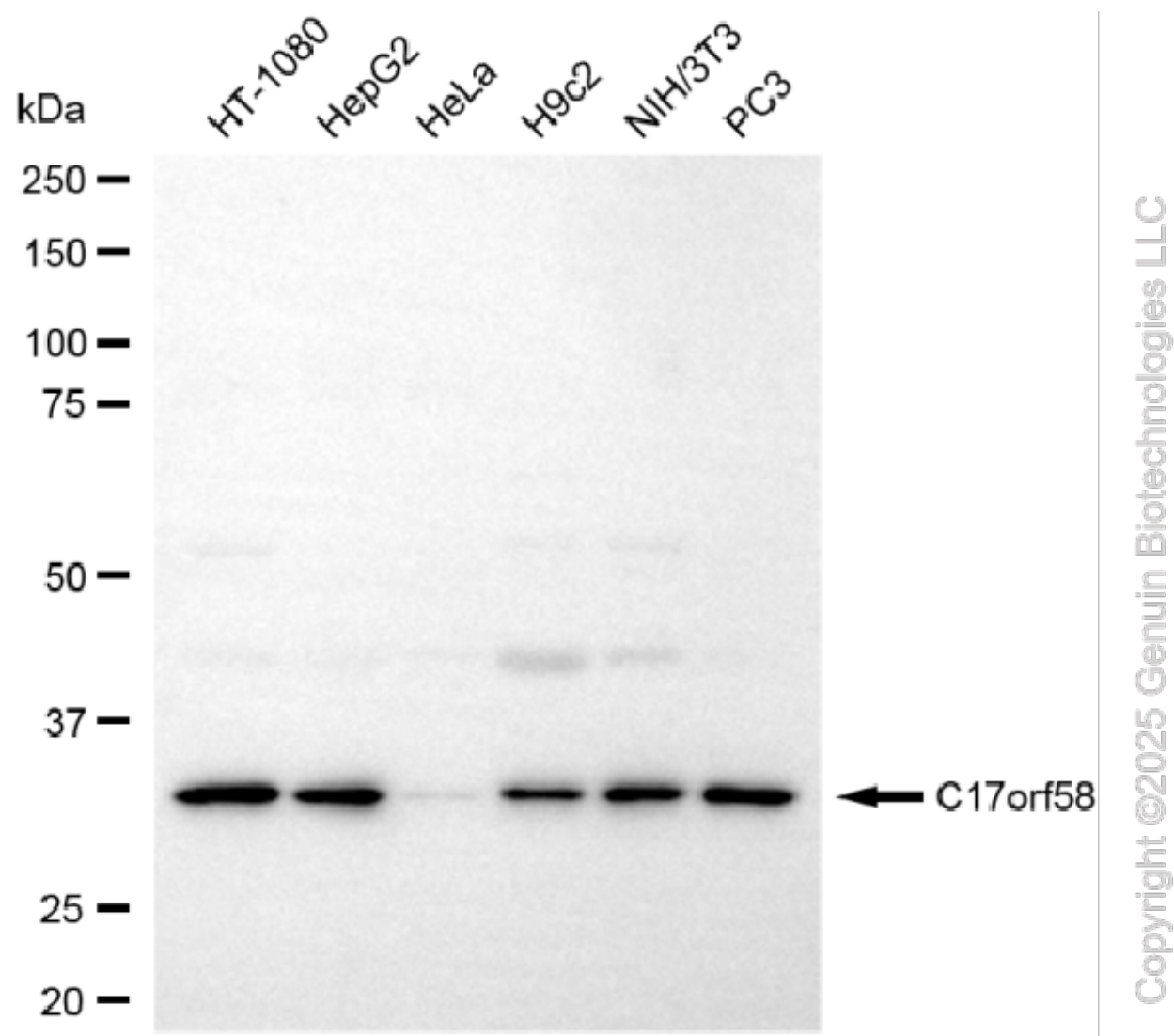
WWW.GENUINBIOTECH.COM



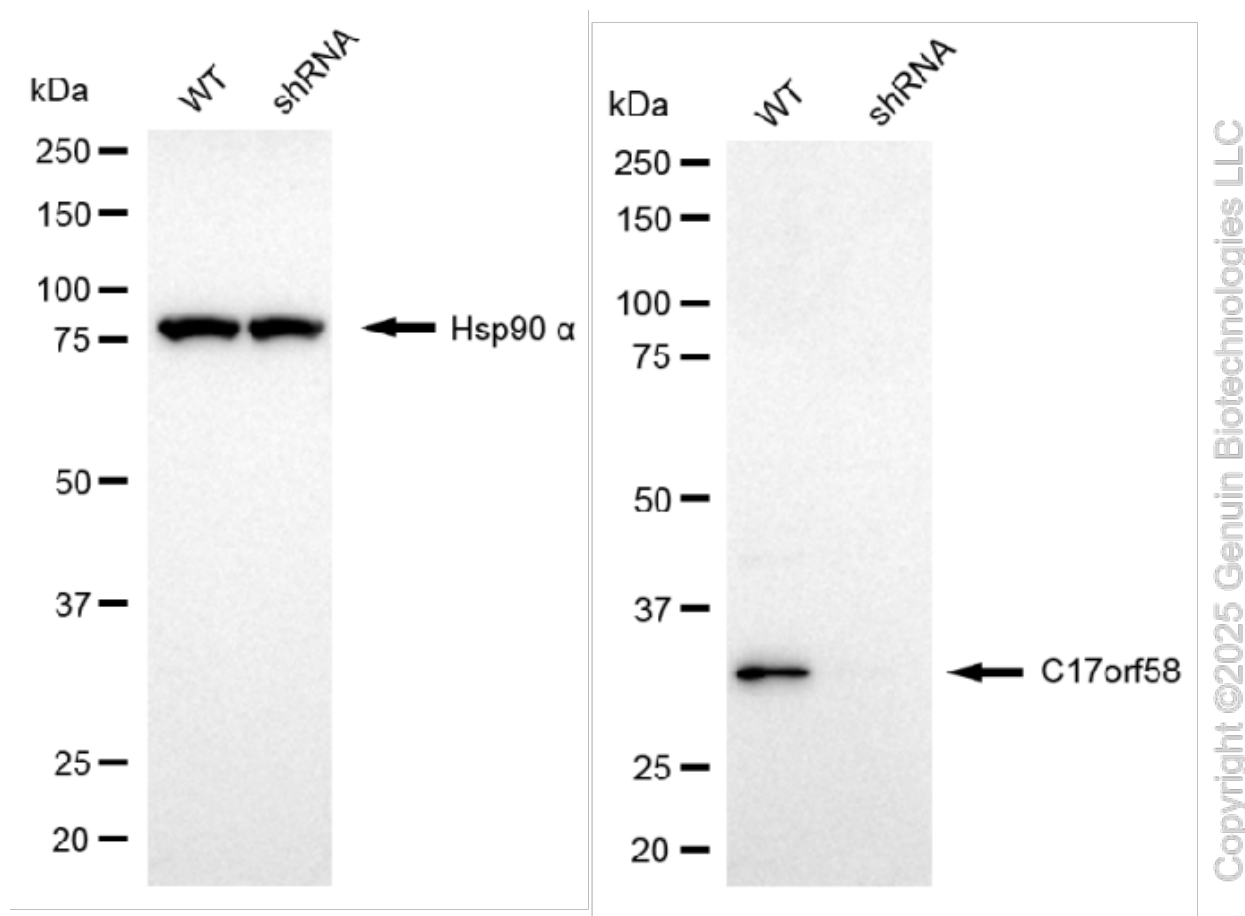
Flow cytometric analysis of C17orf58 expression in HT-1080 cells using anti-C17orf58 antibody (Cat#61840, 1:1,000). Green, isotype control; red, C17orf58.



Immunocytochemical staining of HT-1080 cells with anti-C17orf58 associated protein antibody (Cat#61840, 1:1,000). Nuclei were stained blue with DAPI; C17orf58 associated protein was stained magenta with Alexa Fluor® 647. Images were taken using Leica stellaris 5. Protein abundance based on laser Intensity and smart gain: Medium. Scale bar, 20 μ m.



Western blotting analysis using anti-c17orf58 antibody (Cat#61840). Total cell lysates (30 µg) from various cell lines were loaded and separated by SDS-PAGE. The blot was incubated with anti-c17orf58 antibody (Cat#61840, 1:2,500) and HRP-conjugated goat anti-mouse secondary antibody (Cat#101, 1:20,000) respectively. Image was developed using FeQ™ ECL Substrate Kit (Cat#226).



Western blotting analysis using anti-C17orf58 antibody (Cat#61840). C17orf58 expression in wild type (WT) and C17orf58 shRNA knockdown (KD) HeLa cells with 20 µg of total cell lysates. Hsp90 α serves as a loading control. The blot was incubated with anti-C17orf58 antibody (Cat#61840, 1:5,000) and HRP-conjugated goat anti-mouse secondary antibody (Cat#101, 1:20,000) respectively. Image was developed using FeQ™ ECL Substrate Kit (Cat#226).