

KD-Validated Anti-Vasodilator stimulated phosphoprotein Recombinant Rabbit



Catalog #: 61843

Aliases

VASP; Vasodilator Stimulated Phosphoprotein; Vasodilator-Stimulated Phosphoprotein

Background

Gene Name: VASP

NCBI Gene Entry: [7408](#)

UniProt Entry: [P50552](#)

Application Information

Molecular Weight: Predicted, 40 kDa, observed, 46 kDa

Clonality: Rabbit monoclonal antibody

Clone ID: 23GB4715

Species Reactivity: Human

Applications Tested: Western blotting (WB), flow cytometry (FCM), immunocytochemistry (IC)

Immunogen

A synthesized peptide derived from human VASP

Isotype

Rabbit IgG

Storage Buffer

Supplied in PBS (pH 7.4) containing 50% glycerol, and 0.02% sodium azide.

Storage

Store at -20 °C for one year.

Recommended Dilutions

Western Blotting (WB): 1:1,000-1:5,000

Flow Cytometry (FCM): 1:2,000

Immunocytochemistry (IC): 1:100-1:1,000

Note: This product is for research use only.

Validation Data

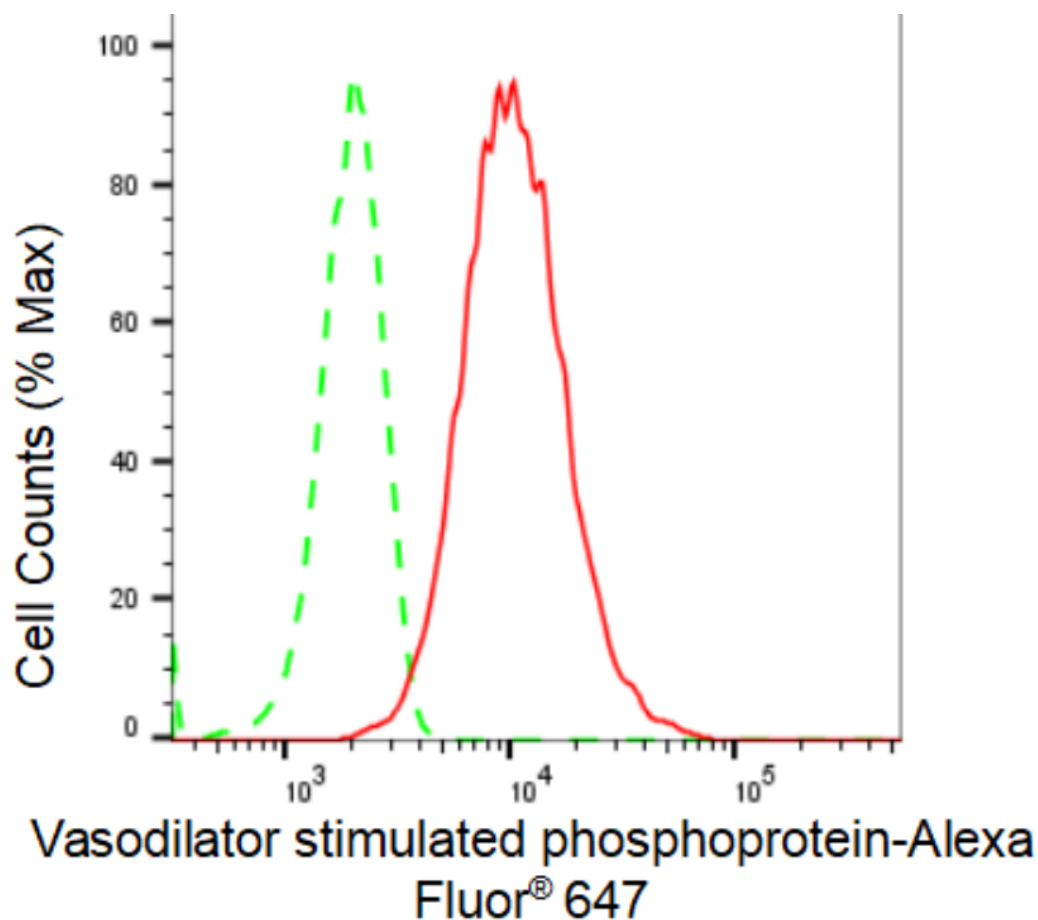
SUPPORT

SUPPORT@GENUINBIOTECH.COM
TEL: +1-540-855-7041

ORDERS

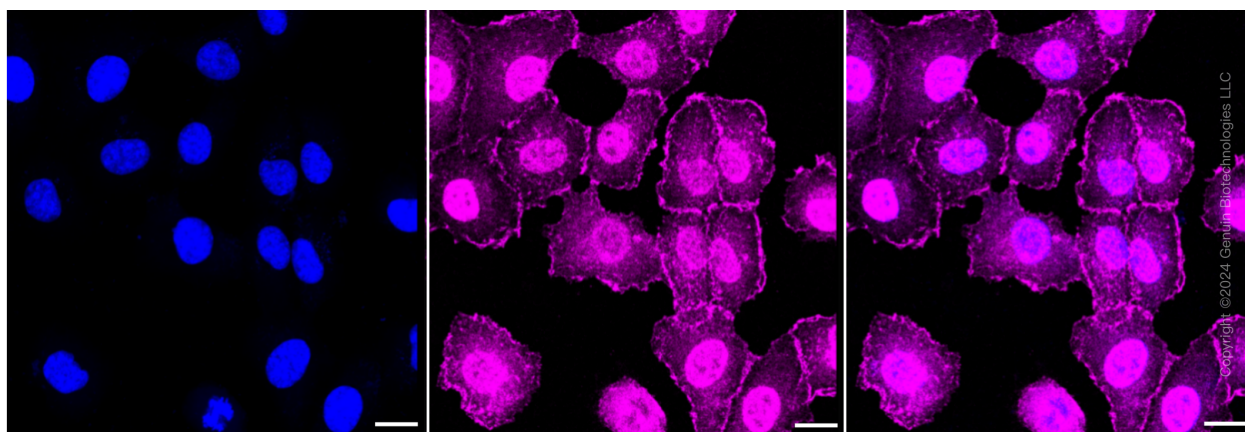
SALES@GENUINBIOTECH.COM
FAX: +1-540-855-7041

WWW.GENUINBIOTECH.COM



Copyright ©2024 Genuin Biotechnologies LLC

Flow cytometric analysis of Vasodilator stimulated phosphoprotein expression in HT-1080 cells using Vasodilator stimulated phosphoprotein antibody (Cat#61843, 1:2,000). Green, isotype control; red, Vasodilator stimulated phosphoprotein.



Immunocytochemical staining of HT-1080 cells with Vasodilator stimulated phosphoprotein antibody (Cat#61843, 1:1,000). Nuclei were stained blue with DAPI; Vasodilator stimulated phosphoprotein was stained magenta with Alexa Fluor® 647. Images were taken using Leica stellaris 5. Protein abundance based on laser Intensity and smart gain: Medium. Scale bar: 20 μ m.

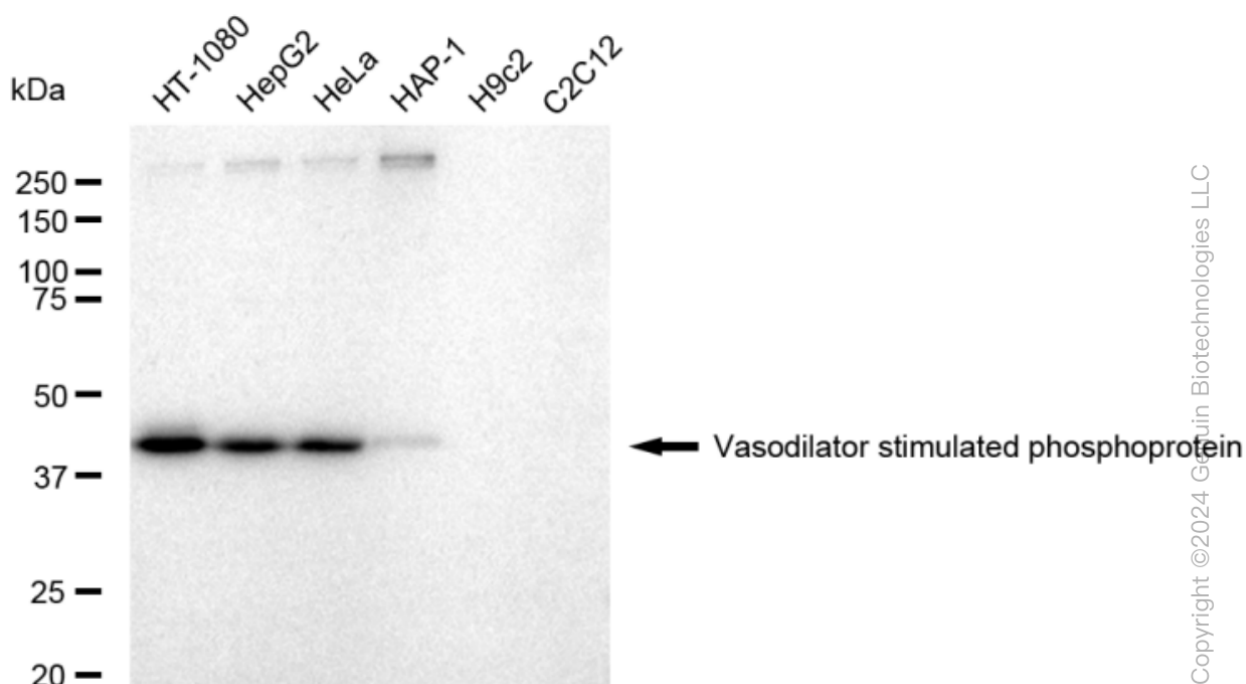
SUPPORT

SUPPORT@GENUINBIOTECH.COM
TEL: +1-540-855-7041

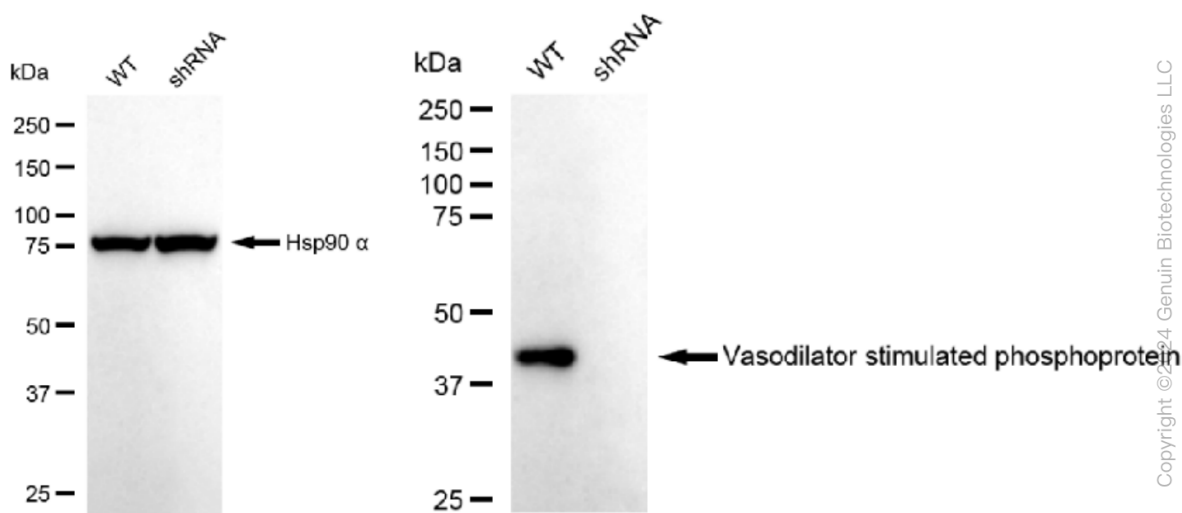
ORDERS

SALES@GENUINBIOTECH.COM
FAX: +1-540-855-7041

WWW.GENUINBIOTECH.COM



Western blotting analysis using anti-Vasodilator stimulated phosphoprotein antibody (Cat#61843). Total cell lysates (30 μ g) from various cell lines were loaded and separated by SDS-PAGE. The blot was incubated with anti-Vasodilator stimulated phosphoprotein antibody (Cat#61843, 1:5,000) and HRP-conjugated goat anti-rabbit secondary antibody (Cat#201, 1:20,000) respectively. Image was developed using FeQ™ ECL Substrate Kit (Cat#226).

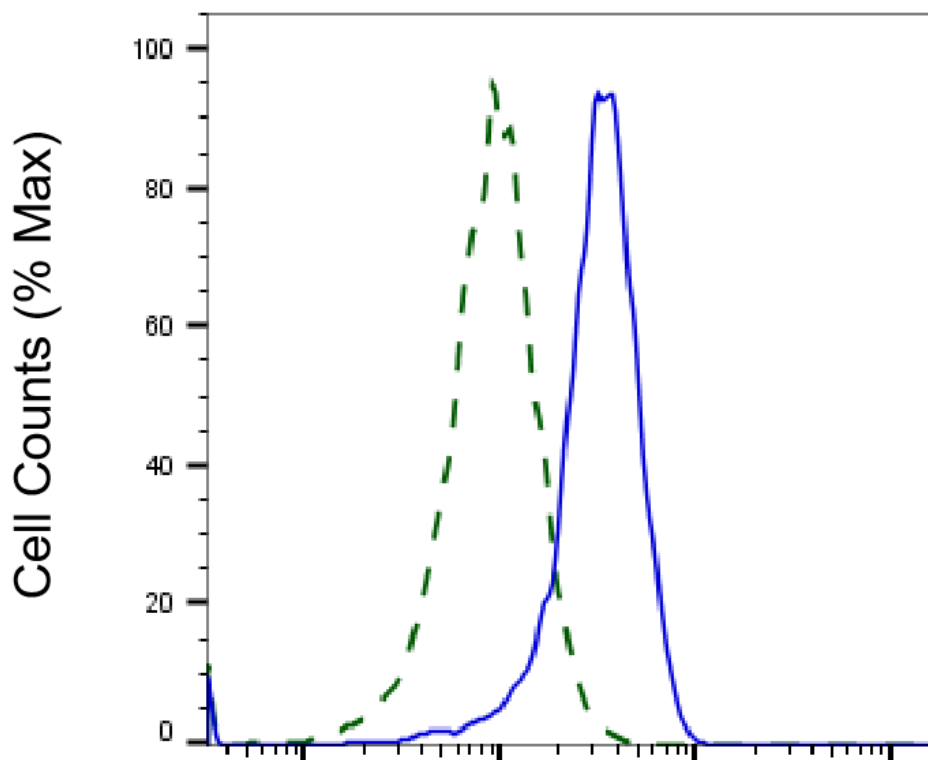


Western blotting analysis using anti-Vasodilator stimulated phosphoprotein antibody (Cat#61843). Vasodilator stimulated phosphoprotein expression in wild type (WT) and Vasodilator stimulated phosphoprotein shRNA knockdown (KD) HeLa cells with 30 μ g of total cell lysates. Hsp90 α serves as a loading control. The blot was incubated with anti-Vasodilator stimulated

KD-Validated Anti-Vasodilator stimulated phosphoprotein Recombinant Rabbit

PAGE 4

phosphoprotein antibody (Cat#61843, 1:5,000) and HRP-conjugated goat anti-rabbit secondary antibody (Cat#201, 1:20,000) respectively. Image was developed using FeQ™ ECL Substrate Kit (Cat#226).



Copyright ©2025 Genuin Biotechnologies LLC

Vasodilator stimulated phosphoprotein-Alexa Fluor® 647

Validation of Vasodilator stimulated phosphoprotein knockdown using flow cytometry. Wild-type(WT, Blue) and knockdown(KD, Green) HeLa cells were stained with anti-Vasodilator stimulated phosphoprotein antibody (Cat#61843, 1:2,000) and analyzed using BD flow cytometer.

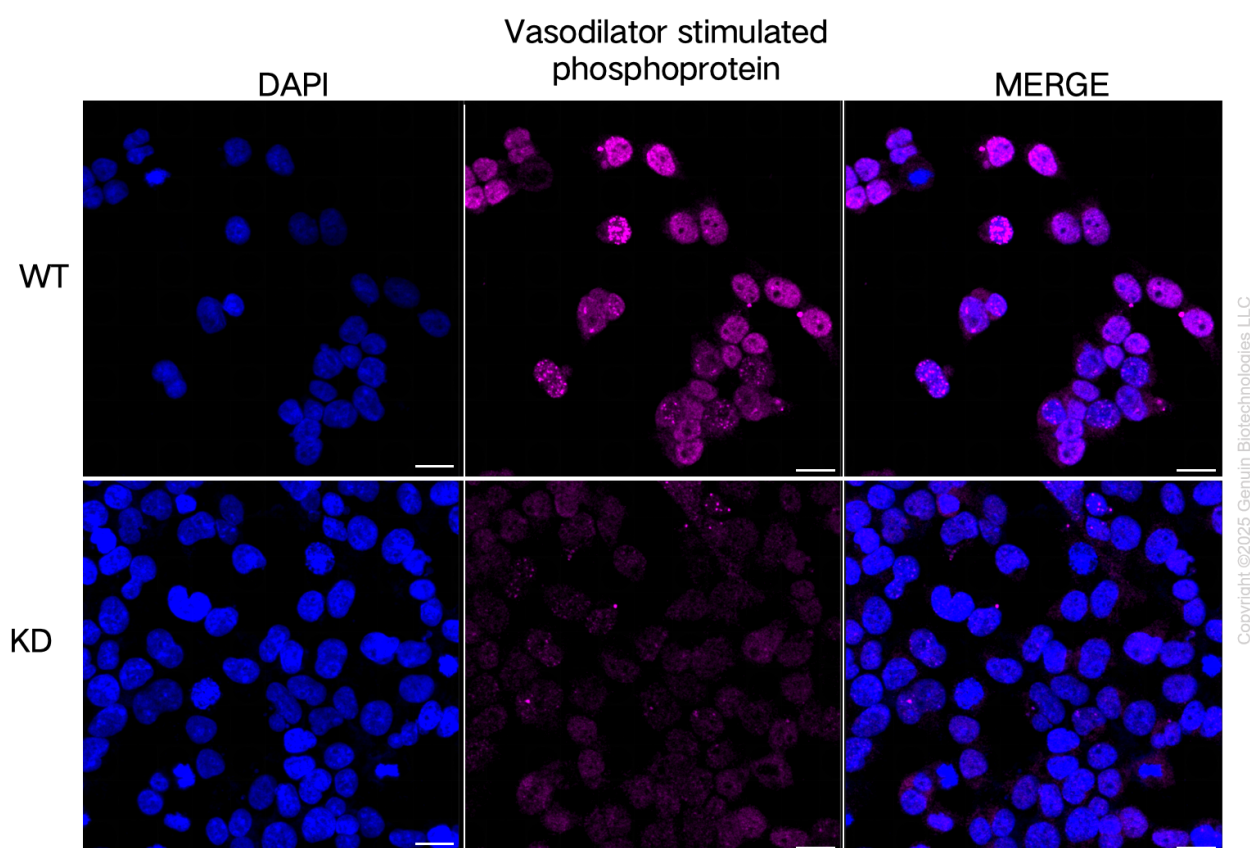
SUPPORT

SUPPORT@GENUINBIOTECH.COM
TEL: +1-540-855-7041

ORDERS

SALES@GENUINBIOTECH.COM
FAX: +1-540-855-7041

WWW.GENUINBIOTECH.COM



Immunocytochemical staining of HeLa cells using anti-Vasodilator stimulated phosphoprotein antibody (Cat#61843, 1:1,000), Top panel: wild-type (WT); Bottom panel: Vasodilator stimulated phosphoprotein shRNA knockdown (KD). Nuclei were stained blue with DAPI; Vasodilator stimulated phosphoprotein was stained magenta with Alexa Fluor® 647. Scale bar, 20 μ m.