

KD-Validated Anti-WD repeat domain 1 Recombinant Rabbit Monoclonal Antibody



Catalog #: 61844

Aliases

WDR1; WD Repeat Domain 1; AIP1; Actin-Interacting Protein 1; WD Repeat-Containing Protein 1; NORI-1; Epididymis Secretory Protein Li 52; HEL-S-52; PFITS

Background

Gene Name: WDR1

NCBI Gene Entry: [9948](#)

UniProt Entry: [O75083](#)

Application Information

Molecular Weight: Predicted, 66 kDa, observed, 75 kDa

Clonality: Rabbit monoclonal antibody

Clone ID: 23GB4720

Species Reactivity: Human, mouse, rat

Applications Tested: Western blotting (WB), flow cytometry (FCM), immunocytochemistry (IC)

Immunogen

A synthesized peptide derived from human WDR1

Isotype

Rabbit IgG

Storage Buffer

Supplied in PBS (pH 7.4) containing 50% glycerol, and 0.02% sodium azide.

Storage

Store at -20 °C for one year.

Recommended Dilutions

Western Blotting (WB): 1:1,000-1:5,000

Flow Cytometry (FCM): 1:2,000

Immunocytochemistry (IC): 1:100-1:1,000

Note: This product is for research use only.

Validation Data

SUPPORT

SUPPORT@GENUINBIOTECH.COM
TEL: +1-540-855-7041

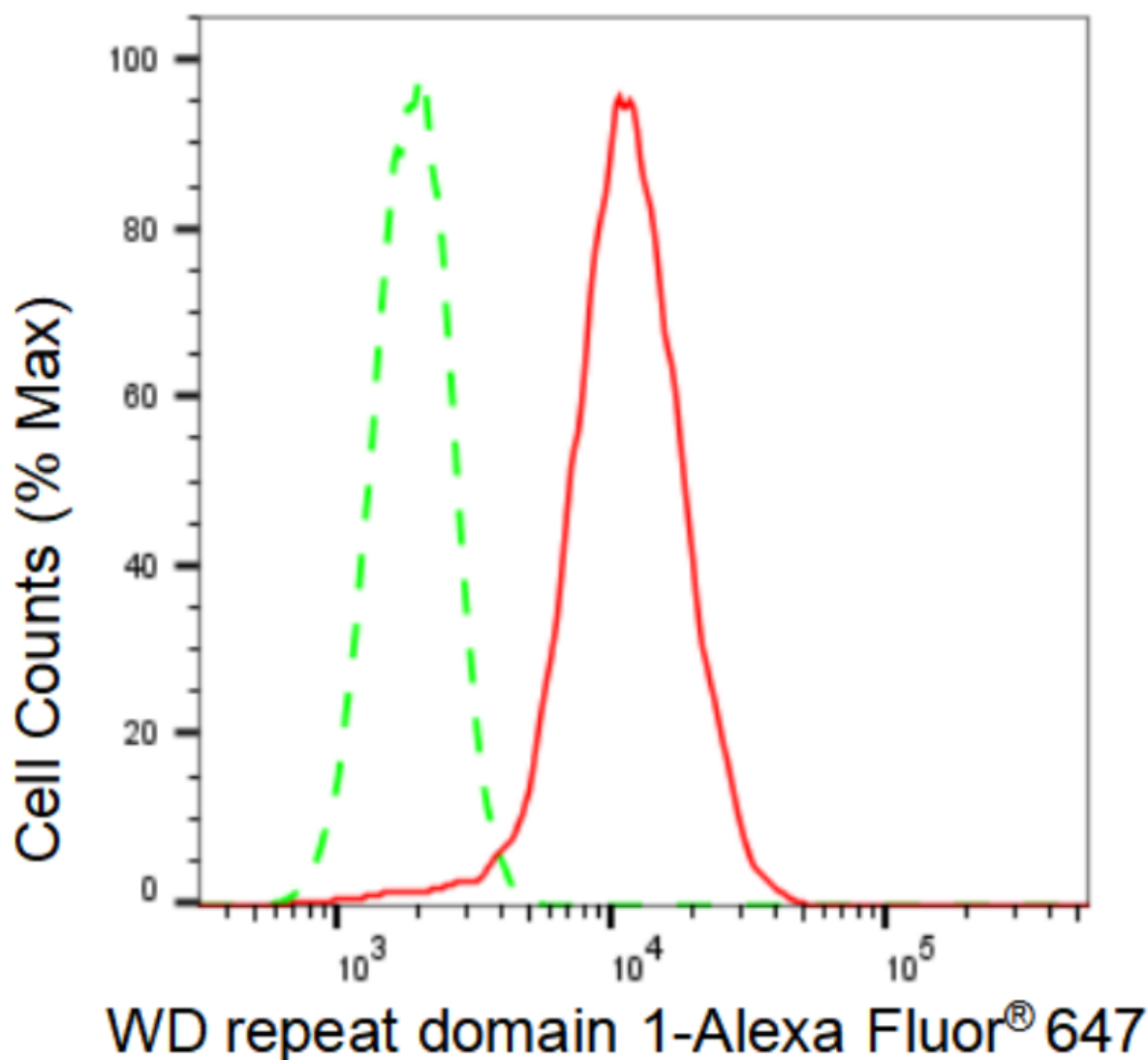
ORDERS

SALES@GENUINBIOTECH.COM
FAX: +1-540-855-7041

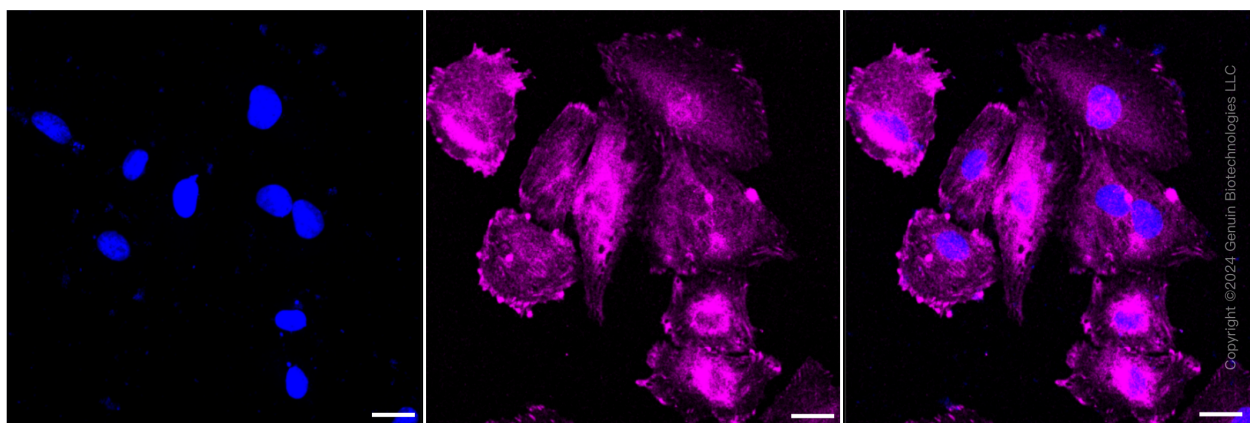
WWW.GENUINBIOTECH.COM

KD-Validated Anti-WD repeat domain 1 Recombinant Rabbit Monoclonal Antibody

PAGE 2



Flow cytometric analysis of WD repeat domain 1 expression in H9c2 cells using WD repeat domain 1 antibody (Cat#61844, 1:2,000). Green, isotype control; red, WD repeat domain 1.



SUPPORT

SUPPORT@GENUINBIOTECH.COM
TEL: +1-540-855-7041

ORDERS

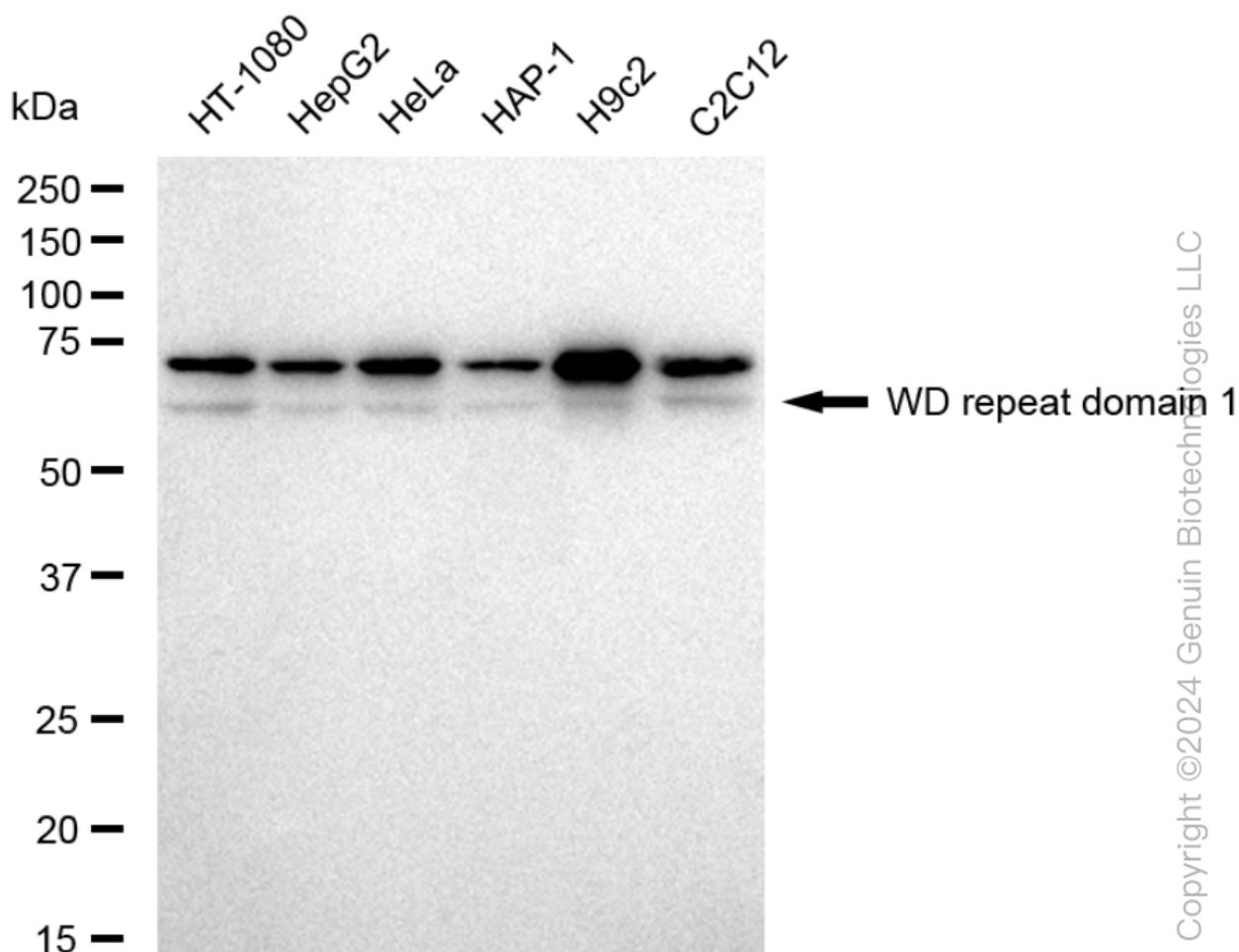
SALES@GENUINBIOTECH.COM
FAX: +1-540-855-7041

WWW.GENUINBIOTECH.COM

KD-Validated Anti-WD repeat domain 1 Recombinant Rabbit Monoclonal Antibody

PAGE 3

Immunocytochemical staining of H9C2 cells with WD repeat domain 1 antibody (Cat#61844, 1:1,000). Nuclei were stained blue with DAPI; WD repeat domain 1 was stained magenta with Alexa Fluor® 647. Images were taken using Leica stellaris 5. Protein abundance based on laser Intensity and smart gain: Medium. Scale bar: 20 μ m.



Western blotting analysis using anti-WD repeat domain 1 antibody (Cat#61844). Total cell lysates (30 μ g) from various cell lines were loaded and separated by SDS-PAGE. The blot was incubated with anti-WD repeat domain 1 antibody (Cat#61844, 1:5,000) and HRP-conjugated goat anti-rabbit secondary antibody (Cat#201, 1:20,000) respectively. Image was developed using FeQ™ ECL Substrate Kit (Cat#226).

SUPPORT

SUPPORT@GENUINBIOTECH.COM
TEL: +1-540-855-7041

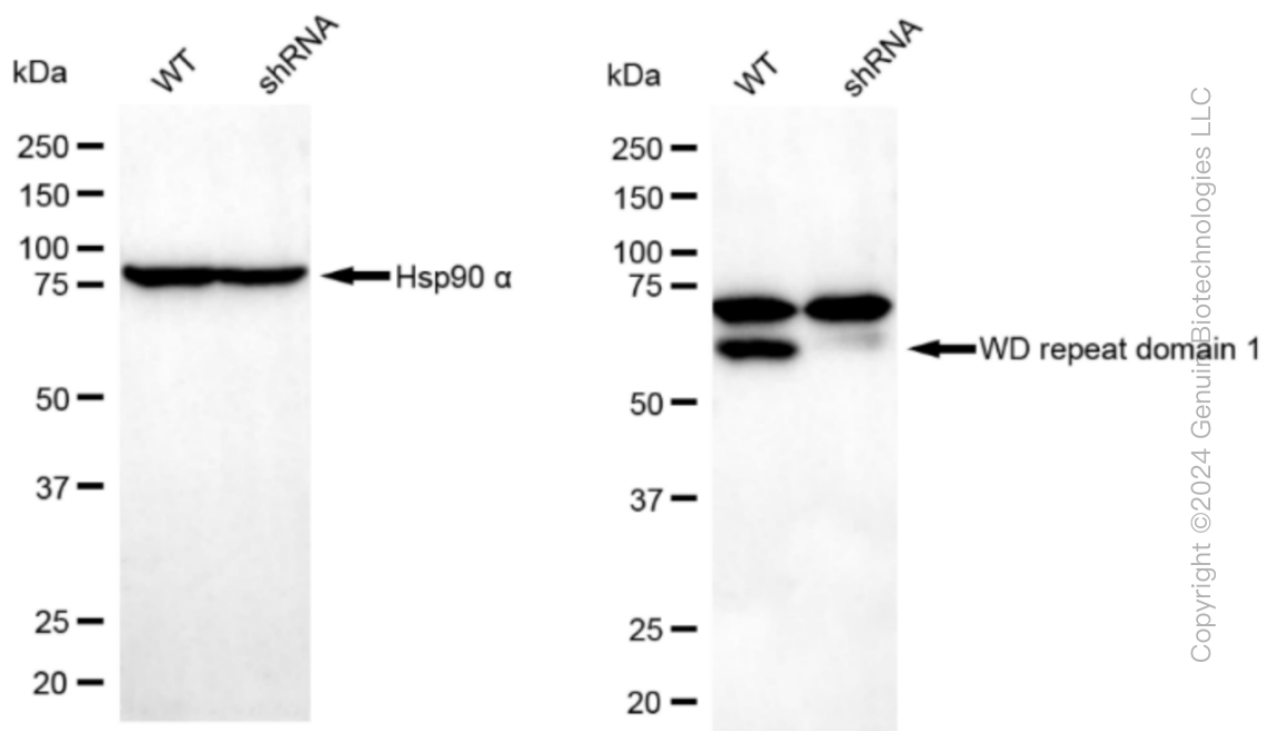
ORDERS

SALES@GENUINBIOTECH.COM
FAX: +1-540-855-7041

WWW.GENUINBIOTECH.COM

KD-Validated Anti-WD repeat domain 1 Recombinant Rabbit Monoclonal Antibody

PAGE 4



Western blotting analysis using anti-WD repeat domain 1 antibody (Cat#61844). WD repeat domain 1 expression in wild type (WT) and WD repeat domain 1 shRNA knockdown (KD) HeLa cells with 30 µg of total cell lysates. β -Tubulin serves as a loading control. The blot was incubated with anti-WD repeat domain 1 antibody (Cat#61844, 1:5,000) and HRP-conjugated goat anti-rabbit secondary antibody (Cat#201, 1:20,000) respectively. Image was developed using FeQ™ ECL Substrate Kit (Cat#226).

SUPPORT

SUPPORT@GENUINBIOTECH.COM
TEL: +1-540-855-7041

ORDERS

SALES@GENUINBIOTECH.COM
FAX: +1-540-855-7041

WWW.GENUINBIOTECH.COM