

# KD-Validated Anti-DTNA Mouse Monoclonal Antibody



**Catalog #: 61845**

## Aliases

DTNA; Dystrobrevin Alpha; DRP3; Dystrophin-Related Protein 3; D18S892E; DTN; DTN-1; DTN-2; DTN-3; DTN-A; Dystrobrevin, Alpha; Alpha-Dystrobrevin; LVNC1

## Background

Gene Name: DTNA

NCBI Gene Entry: [1837](#)

UniProt Entry: [Q9Y4J8](#)

## Application Information

Molecular Weight: Predicted, 84 kDa; observed, 75 kDa

Clonality: Mouse monoclonal antibody

Clone ID: 25GB3985

Species Reactivity: Human, mouse, rat

Applications Tested: Western blotting (WB), flow cytometry (FCM), immunocytochemistry (IC)

## Immunogen

Recombinant protein of human DTNA

## Isotype

Mouse IgG2b

## Storage Buffer

Supplied in PBS (pH 7.4) containing 50% glycerol, and 0.02% sodium azide.

## Storage

Store at -20 °C for one year.

## Recommended Dilutions

Western Blotting (WB): 1:1,000-1:5,000

Flow Cytometry (FCM): 1:1,000

Immunocytochemistry (IC): 1:100-1:1,000

**Note:** This product is for research use only.

## Validation Data

---

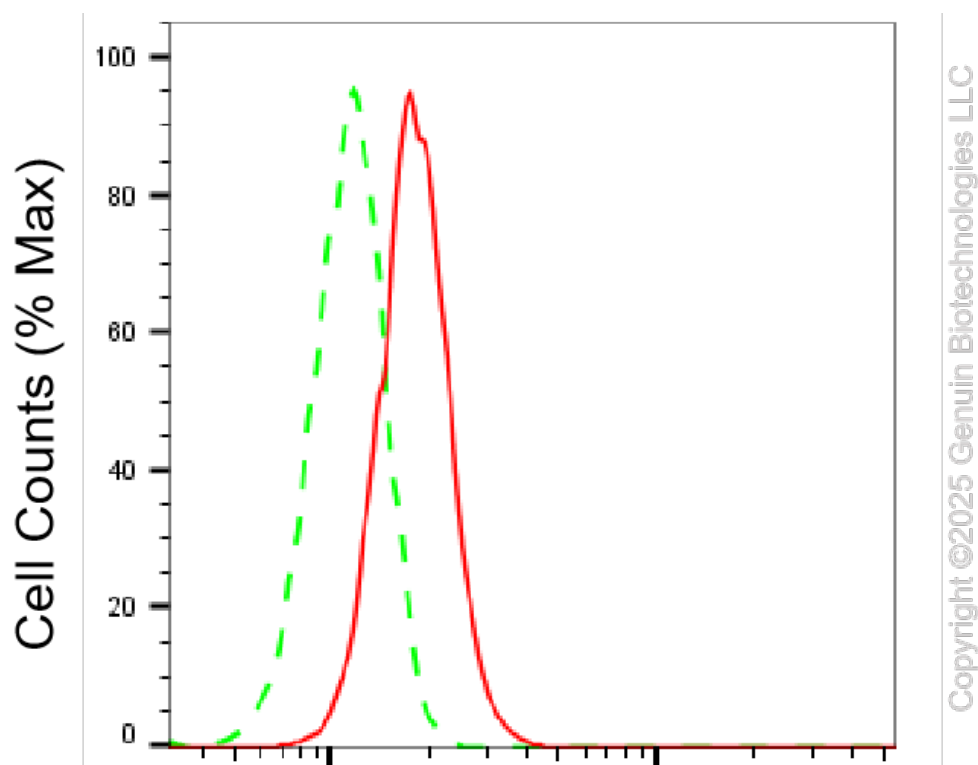
### SUPPORT

SUPPORT@GENUINBIOTECH.COM  
TEL: +1-540-855-7041

### ORDERS

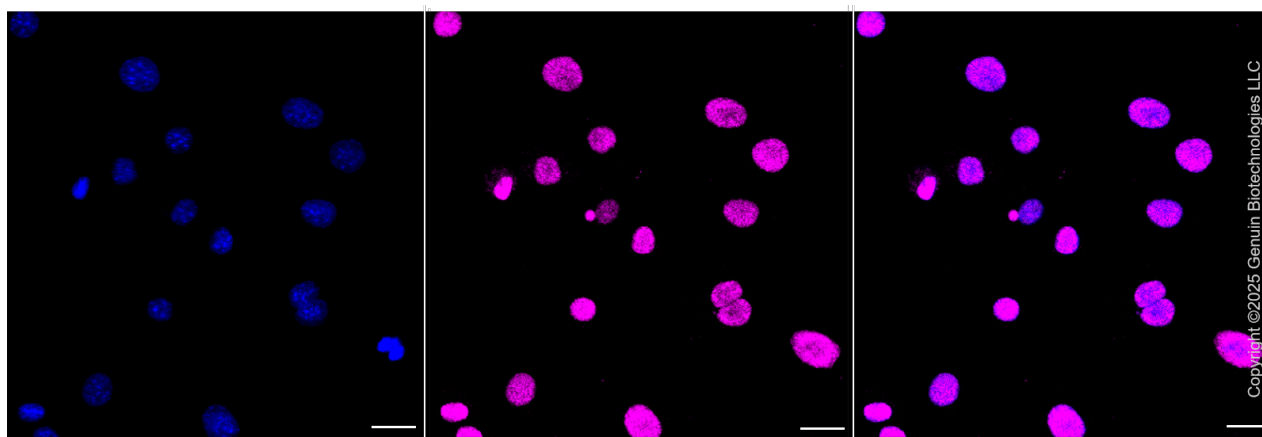
SALES@GENUINBIOTECH.COM  
FAX: +1-540-855-7041

[WWW.GENUINBIOTECH.COM](http://WWW.GENUINBIOTECH.COM)



## Dystrobrevin alpha-Alexa Fluor® 647

Flow cytometric analysis of Dystrobrevin alpha expression in C2C12 cells using anti-Dystrobrevin alpha antibody (Cat#61845, 1:1,000). Green, isotype control; red, Dystrobrevin alpha.



Immunocytochemical staining of C2C12 cells with anti-Dystrobrevin alpha antibody (Cat#61845, 1:1,000). Nuclei were stained blue with DAPI; Dystrobrevin alpha was stained magenta with Alexa Fluor® 647. Images were taken using Leica stellaris 5. Protein abundance based on laser Intensity and smart gain: Medium. Scale bar, 20  $\mu$ m.

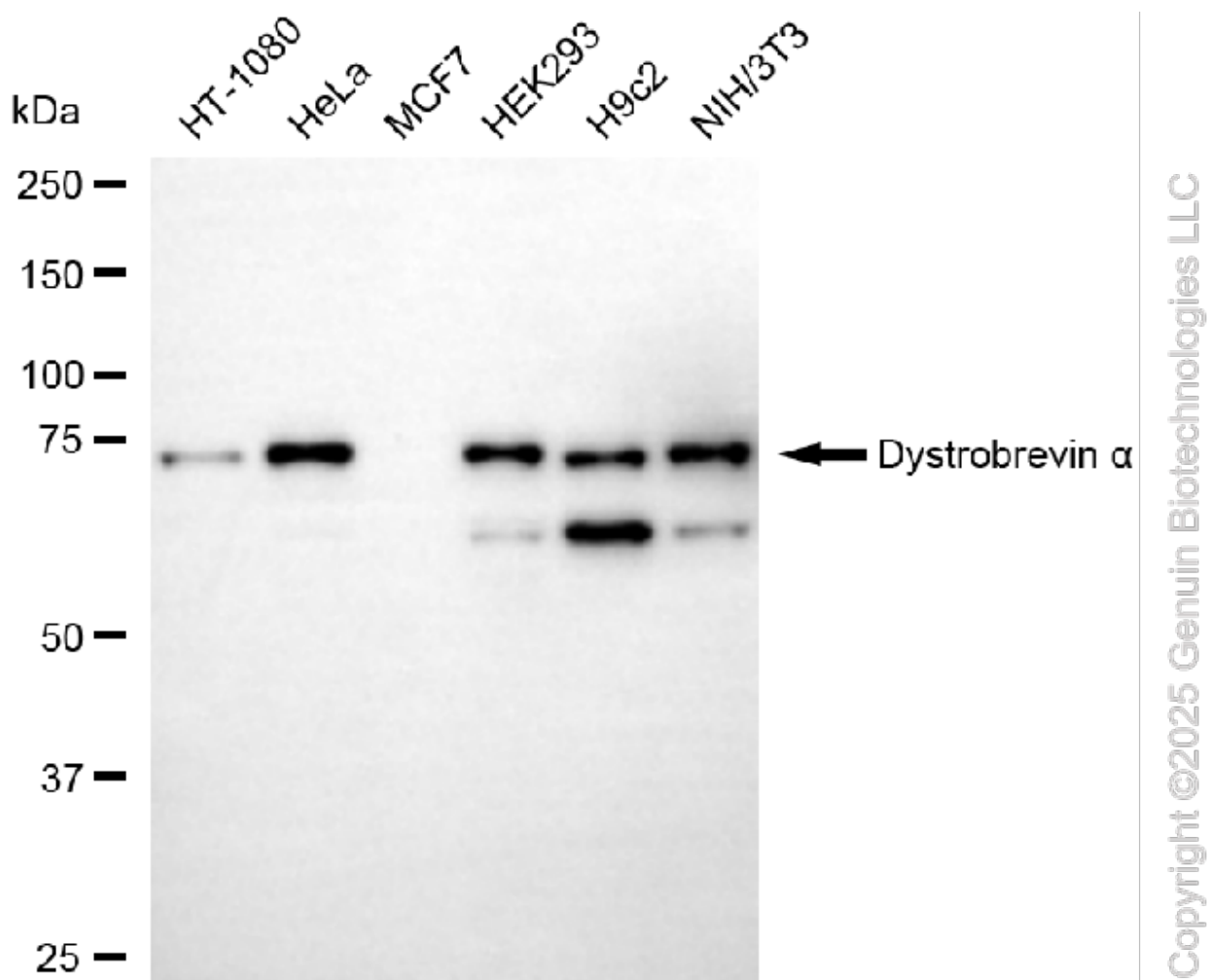
### SUPPORT

SUPPORT@GENUINBIOTECH.COM  
TEL: +1-540-855-7041

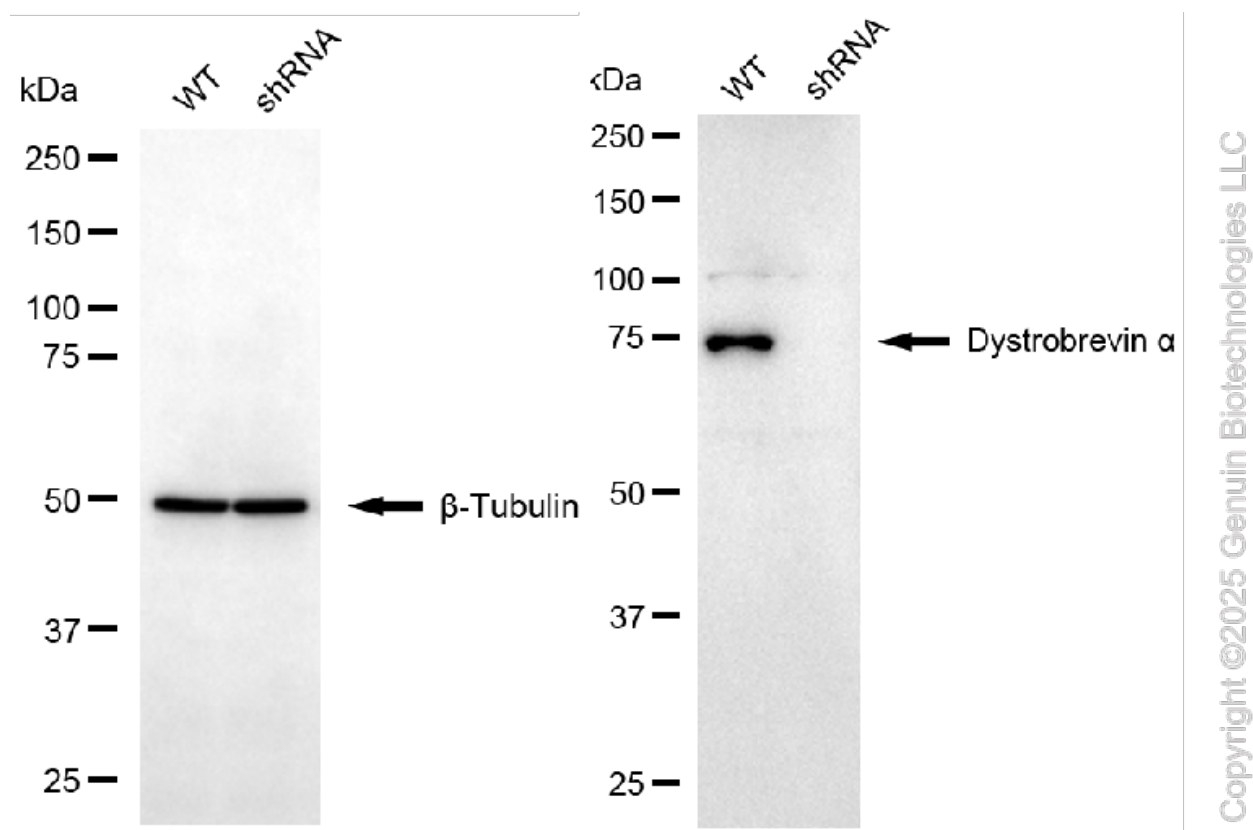
### ORDERS

SALES@GENUINBIOTECH.COM  
FAX: +1-540-855-7041

[WWW.GENUINBIOTECH.COM](http://WWW.GENUINBIOTECH.COM)



Western blotting analysis using anti-dystrobrevin alpha antibody (Cat#61845). Total cell lysates (30 µg) from various cell lines were loaded and separated by SDS-PAGE. The blot was incubated with anti-dystrobrevin alpha antibody (Cat#61845, 1:5,000) and HRP-conjugated goat anti-mouse secondary antibody (Cat#101, 1:20,000) respectively. Image was developed using FeQ™ ECL Substrate Kit (Cat#226).



Western blotting analysis using anti-dystrobrevin alpha antibody (Cat#61845). Dystrobrevin alpha expression in wild type (WT) and dystrobrevin alpha (DTNA) shRNA knockdown (KD) HT-1080 cells with 20 µg of total cell lysates. β-Tubulin serves as a loading control. The blot was incubated with anti-dystrobrevin alpha antibody (Cat#61845, 1:5,000) and HRP-conjugated goat anti-mouse secondary antibody (Cat#101, 1:20,000) respectively. Image was developed using FeQ™ ECL Substrate Kit (Cat#226).