

# KD-Validated Anti-CRKL Recombinant Rabbit Monoclonal Antibody



**Catalog #: 61847**

## Aliases

CRKL; CRK Like Proto-Oncogene, Adaptor Protein; V-Crk Avian Sarcoma Virus CT10 Oncogene Homolog-Like; Crk-Like Protein

## Background

Gene Name: CRKL

NCBI Gene Entry: [1399](#)

UniProt Entry: [P46109](#)

## Application Information

Molecular Weight: Predicted, 34 kDa, observed, 37 kDa

Clonality: Rabbit monoclonal antibody

Clone ID: 23GB4735

Species Reactivity: Human, mouse, rat

Applications Tested: Western blotting (WB), immunocytochemistry (IC)

## Immunogen

A synthesized peptide derived from human CrkL

## Isotype

Rabbit IgG

## Storage Buffer

Supplied in PBS (pH 7.4) containing 50% glycerol, and 0.02% sodium azide.

## Storage

Store at -20 °C for one year.

## Recommended Dilutions

Western Blotting (WB): 1:1,000-1:5,000

Immunocytochemistry (IC): 1:100-1:1,000

**Note:** This product is for research use only.

## Validation Data

---

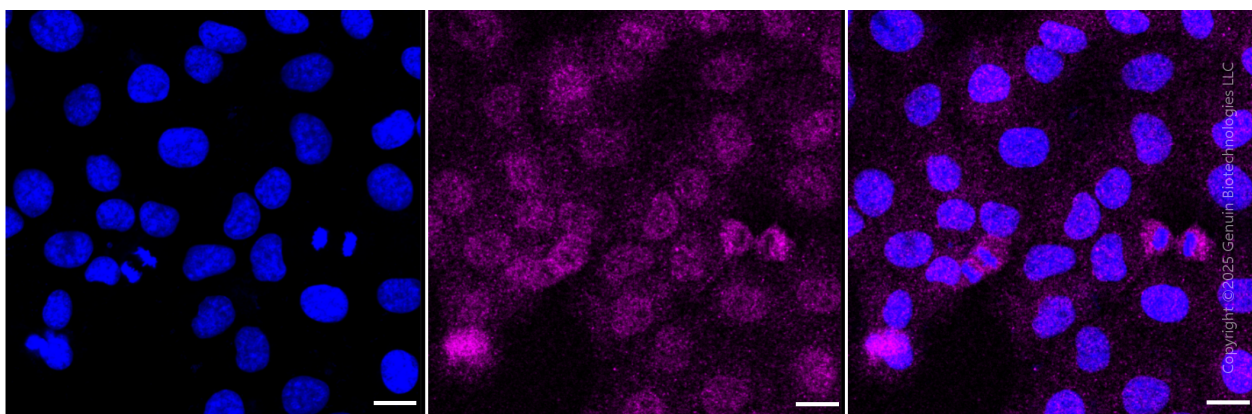
### SUPPORT

SUPPORT@GENUINBIOTECH.COM  
TEL: +1-540-855-7041

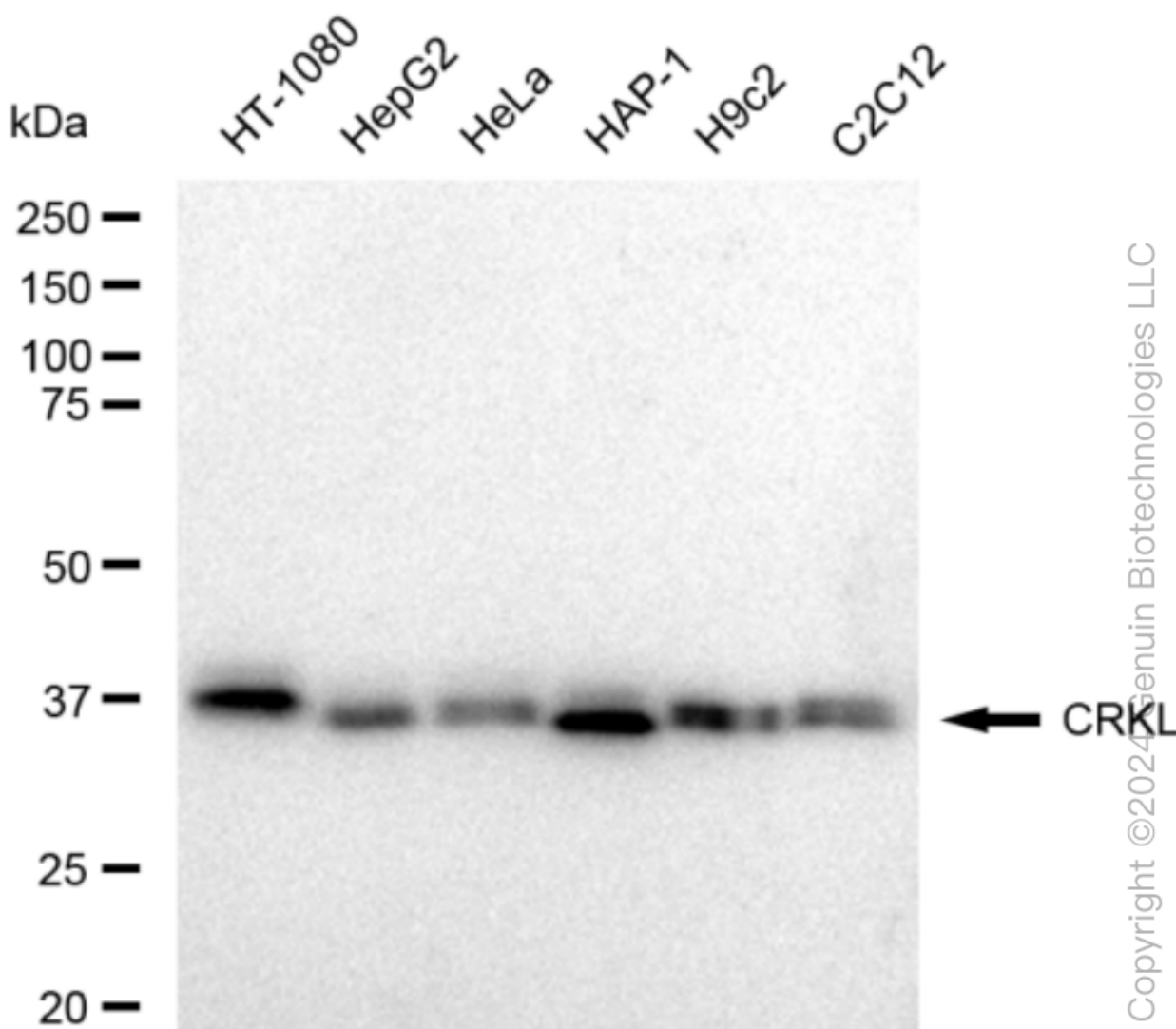
### ORDERS

SALES@GENUINBIOTECH.COM  
FAX: +1-540-855-7041

[WWW.GENUINBIOTECH.COM](http://WWW.GENUINBIOTECH.COM)



Immunocytochemical staining of HeLa cells using anti-CRKL antibody (Cat#61847, 1:1,000), Top panel: wild-type (WT); Bottom panel: CRKL shRNA knockdown (KD). Nuclei were stained blue with DAPI; CRKL was stained magenta with Alexa Fluor® 647. Scale bar, 20  $\mu$ m.

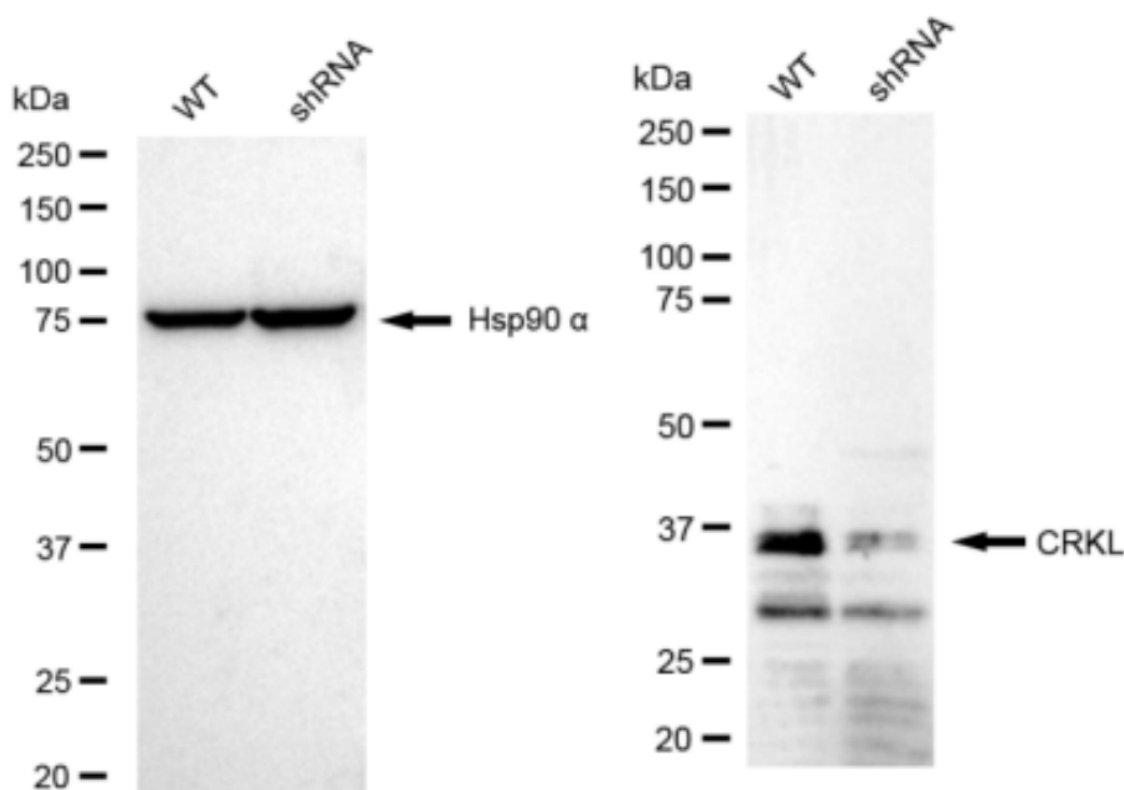


Western blotting analysis using anti-CRKL antibody (Cat#61847). Total cell lysates (30  $\mu$ g) from

## KD-Validated Anti-CRKL Recombinant Rabbit Monoclonal Antibody

PAGE 3

various cell lines were loaded and separated by SDS-PAGE. The blot was incubated with anti-CRKL antibody (Cat#61847, 1:5,000) and HRP-conjugated goat anti-rabbit secondary antibody (Cat#201, 1:20,000) respectively. Image was developed using FeQ™ ECL Substrate Kit (Cat#226).



Western blotting analysis using anti-CRKL antibody (Cat#61847). CRKL expression in wild type (WT) and CRKL shRNA knockdown (KD) HT-1080 cells with 30 µg of total cell lysates. Hsp90 α serves as a loading control. The blot was incubated with anti-CRKL antibody (Cat#61847, 1:5,000) and HRP-conjugated goat anti-rabbit secondary antibody (Cat#201, 1:20,000) respectively. Image was developed using FeQ™ ECL Substrate Kit (Cat#226).

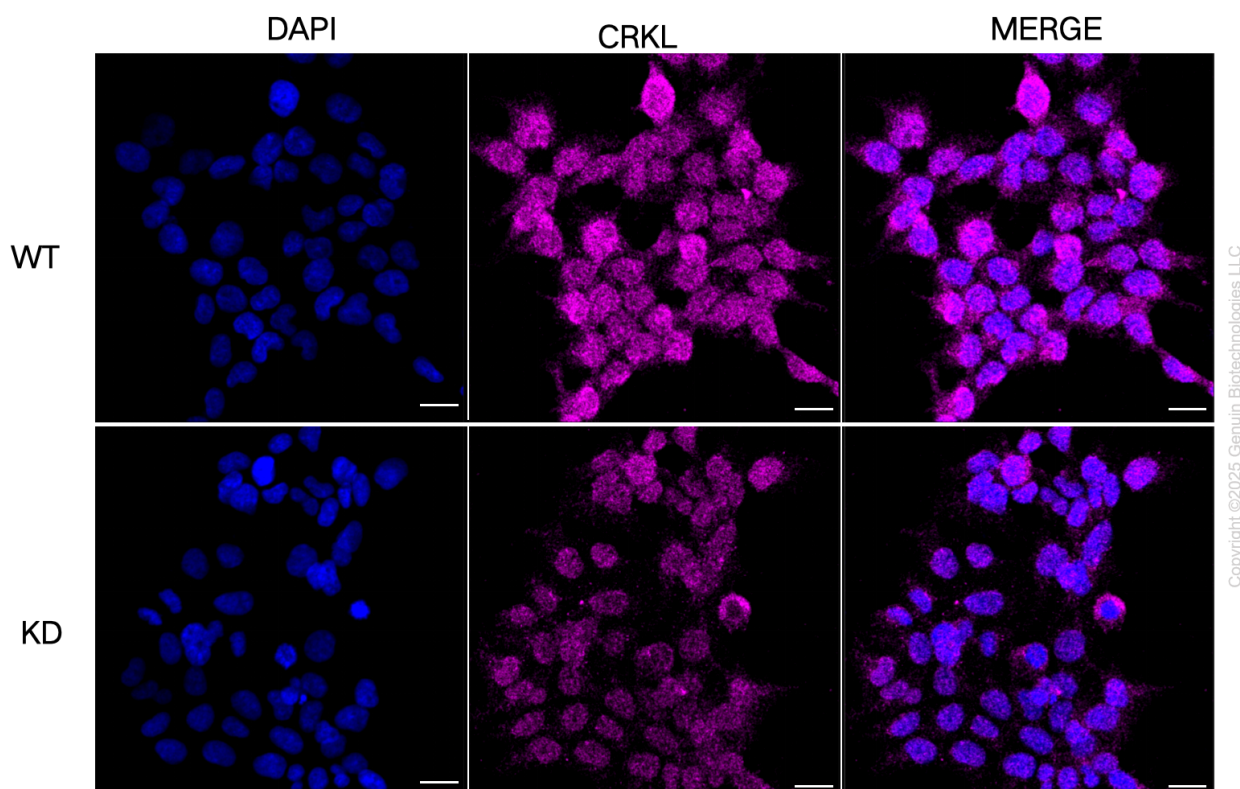
### SUPPORT

SUPPORT@GENUINBIOTECH.COM  
TEL: +1-540-855-7041

### ORDERS

SALES@GENUINBIOTECH.COM  
FAX: +1-540-855-7041

[WWW.GENUINBIOTECH.COM](http://WWW.GENUINBIOTECH.COM)



Immunocytochemical staining of HeLa cells using anti-CRKL antibody (Cat#61847, 1:1,000), Top panel: wild-type (WT); Bottom panel: CRKL shRNA knockdown (KD). Nuclei were stained blue with DAPI; CRKL was stained magenta with Alexa Fluor® 647. Scale bar, 20  $\mu$ m.