

# KD-Validated Anti-ATP1B3 Recombinant Rabbit Monoclonal Antibody



**Catalog #: 61848**

## Aliases

ATP1B3; ATPase Na<sup>+</sup>/K<sup>+</sup> Transporting Subunit Beta 3; Sodium/Potassium-Transporting ATPase Subunit Beta-3; CD298; Sodium-Potassium ATPase Subunit Beta 3 (Non-Catalytic); Sodium/Potassium-Dependent ATPase Subunit Beta-3; ATPase, Na<sup>+</sup>/K<sup>+</sup> Transporting, Beta 3 Polypeptide; Sodium Pump Subunit Beta-3; FLJ29027; ATPB-3; Sodium/Potassium-Transporting ATPase Beta-3 Chain; Na, K-ATPase Beta-3 Polypeptide; CD298 Antigen

## Background

Gene Name: ATP1B3  
NCBI Gene Entry: [483](#)  
UniProt Entry: [P54709](#)

## Application Information

Molecular Weight: Predicted, 32 kDa, observed, 37 kDa  
Clonality: Rabbit monoclonal antibody  
Clone ID: 23GB4740  
Species Reactivity: Human, mouse, rat  
Applications Tested: Western blotting (WB)

## Immunogen

A synthesized peptide derived from human ATP1B3

## Isotype

Rabbit IgG

## Storage Buffer

Supplied in PBS (pH 7.4) containing 50% glycerol, and 0.02% sodium azide.

## Storage

Store at -20 °C for one year.

## Recommended Dilutions

Western Blotting (WB): 1:1,000-1:5,000

**Note:** This product is for research use only.

---

### SUPPORT

SUPPORT@GENUINBIOTECH.COM  
TEL: +1-540-855-7041

### ORDERS

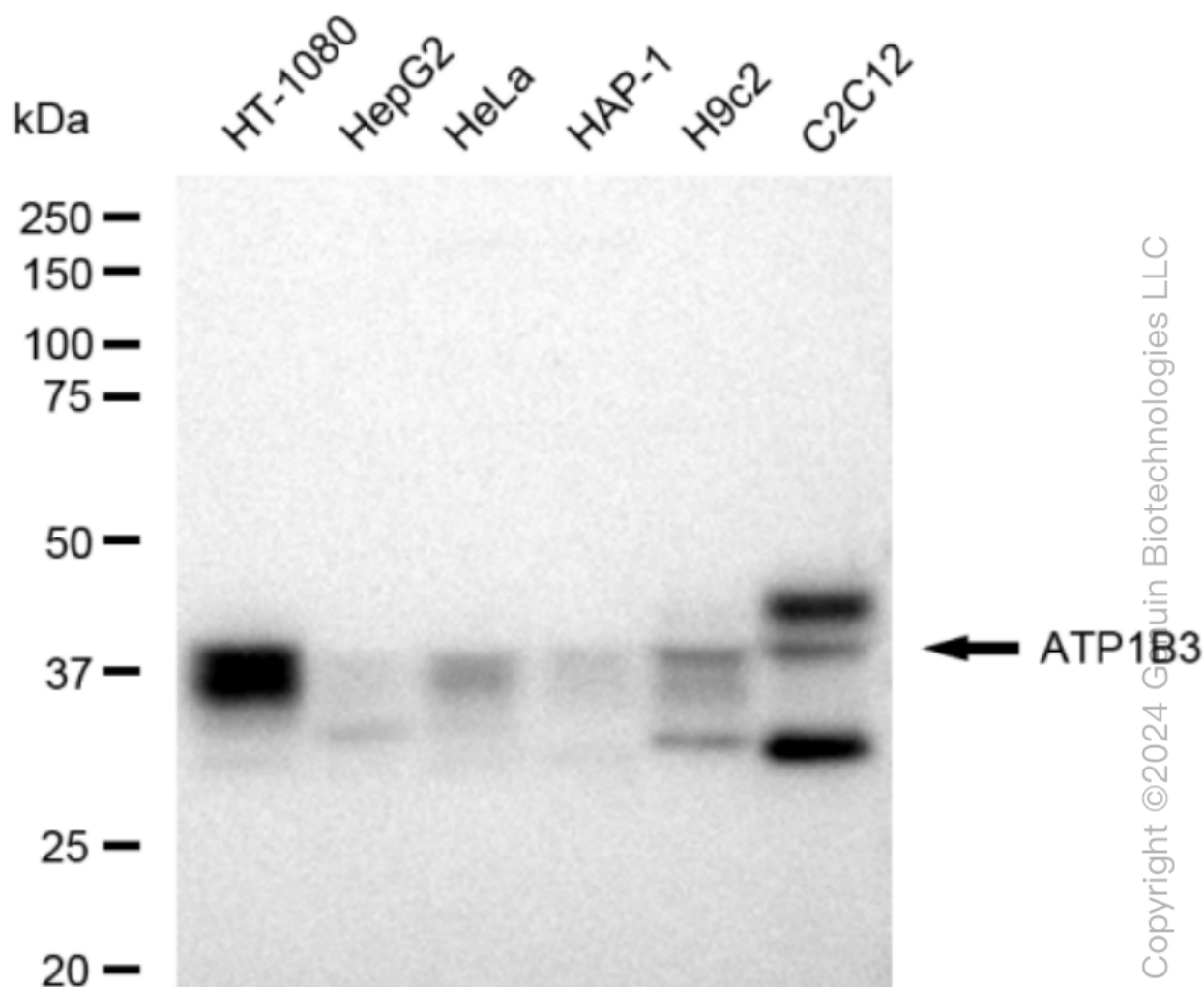
SALES@GENUINBIOTECH.COM  
FAX: +1-540-855-7041

[WWW.GENUINBIOTECH.COM](http://WWW.GENUINBIOTECH.COM)

# KD-Validated Anti-ATP1B3 Recombinant Rabbit Monoclonal Antibody

PAGE 2

## Validation Data



Western blotting analysis using anti-ATP1B3 antibody (Cat#61848). Total cell lysates (30 µg) from various cell lines were loaded and separated by SDS-PAGE. The blot was incubated with anti-ATP1B3 antibody (Cat#61848, 1:5,000) and HRP-conjugated goat anti-rabbit secondary antibody (Cat#201, 1:20,000) respectively. Image was developed using FeQ™ ECL Substrate Kit (Cat#226).

### SUPPORT

SUPPORT@GENUINBIOTECH.COM  
TEL: +1-540-855-7041

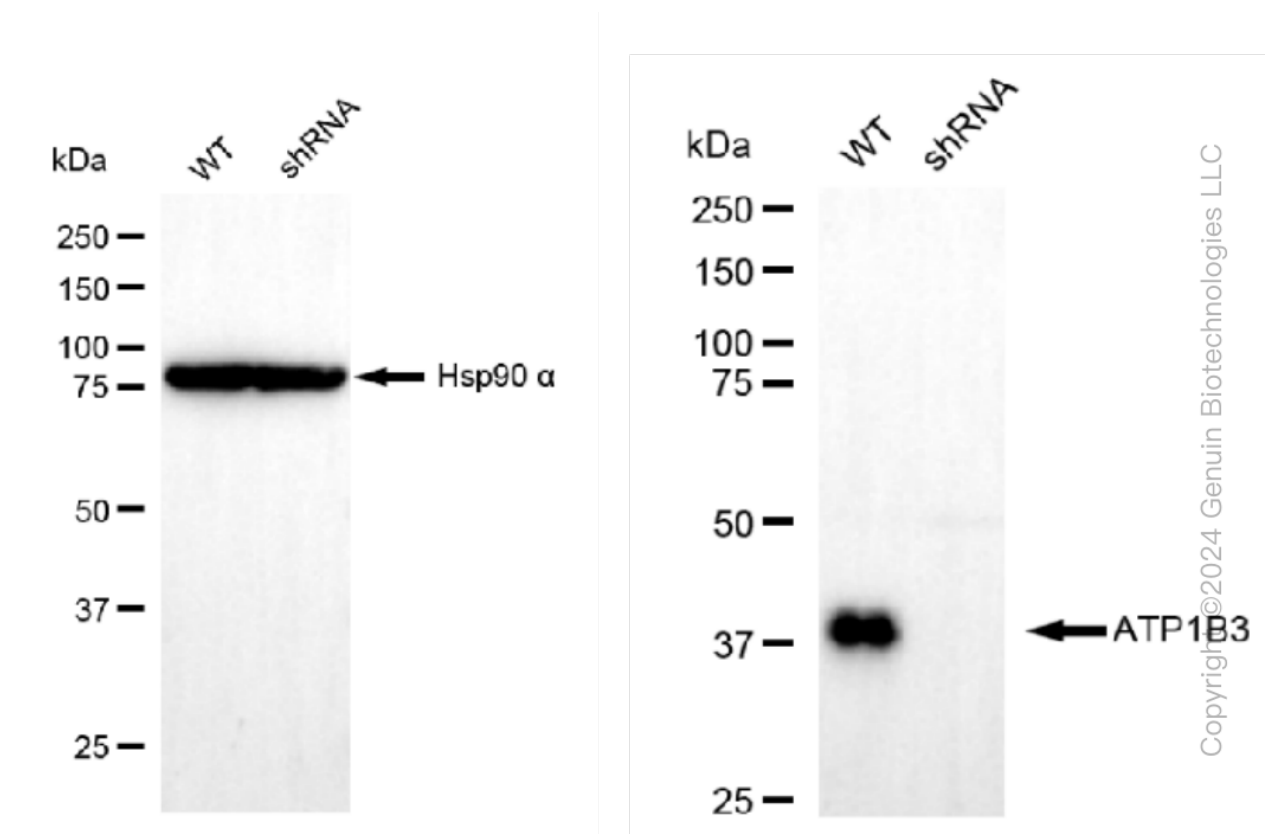
### ORDERS

SALES@GENUINBIOTECH.COM  
FAX: +1-540-855-7041

[WWW.GENUINBIOTECH.COM](http://WWW.GENUINBIOTECH.COM)

## KD-Validated Anti-ATP1B3 Recombinant Rabbit Monoclonal Antibody

PAGE 3



Western blotting analysis using anti-ATP1B3 antibody (Cat#61848). ATP1B3 expression in wild type (WT) and ATP1B3 shRNA knockdown (KD) HeLa cells with 30 µg of total cell lysates. Hsp90 α serves as a loading control. The blot was incubated with anti-ATP1B3 antibody (Cat#61848, 1:5,000) and HRP-conjugated goat anti-rabbit secondary antibody (Cat#201, 1:20,000) respectively. Image was developed using FeQ™ ECL Substrate Kit (Cat#226).

### SUPPORT

SUPPORT@GENUINBIOTECH.COM  
TEL: +1-540-855-7041

### ORDERS

SALES@GENUINBIOTECH.COM  
FAX: +1-540-855-7041

[WWW.GENUINBIOTECH.COM](http://WWW.GENUINBIOTECH.COM)