

KD-Validated Anti-Acetyl-CoA acetyltransferase 2 Recombinant Rabbit



Catalog #: 61849

Aliases

ACAT2; Acetyl-CoA Acetyltransferase 2; Acetyl-CoA Acetyltransferase, Cytosolic; Acetyl-CoA Transferase-Like Protein; Cytosolic Acetoacetyl-CoA Thiolase; Acetoacetyl Coenzyme A Thiolase; EC 2.3.1.9; Acetyl-Coenzyme A Acetyltransferase 2 (Acetoacetyl Coenzyme A Thiolase); Acetyl-Coenzyme A Acetyltransferase 2; EC 2.3.1; ACTL

Background

Gene Name: ACAT2

NCBI Gene Entry: [39](#)

UniProt Entry: [Q9BWD1](#)

Application Information

Molecular Weight: Predicted, 41 kDa, observed, 38 kDa

Clonality: Rabbit monoclonal antibody

Clone ID: 23GB4745

Species Reactivity: Human, mouse, rat

Applications Tested: Western blotting (WB), flow cytometry (FCM), immunocytochemistry (IC)

Immunogen

A synthesized peptide derived from human ACAT2

Isotype

Rabbit IgG

Storage Buffer

Supplied in PBS (pH 7.4) containing 50% glycerol, and 0.02% sodium azide.

Storage

Store at -20 °C for one year.

Recommended Dilutions

Western Blotting (WB): 1:1,000-1:5,000

Flow Cytometry (FCM): 1:2,000

Immunocytochemistry (IC): 1:100-1:1,000

SUPPORT

SUPPORT@GENUINBIOTECH.COM
TEL: +1-540-855-7041

ORDERS

SALES@GENUINBIOTECH.COM
FAX: +1-540-855-7041

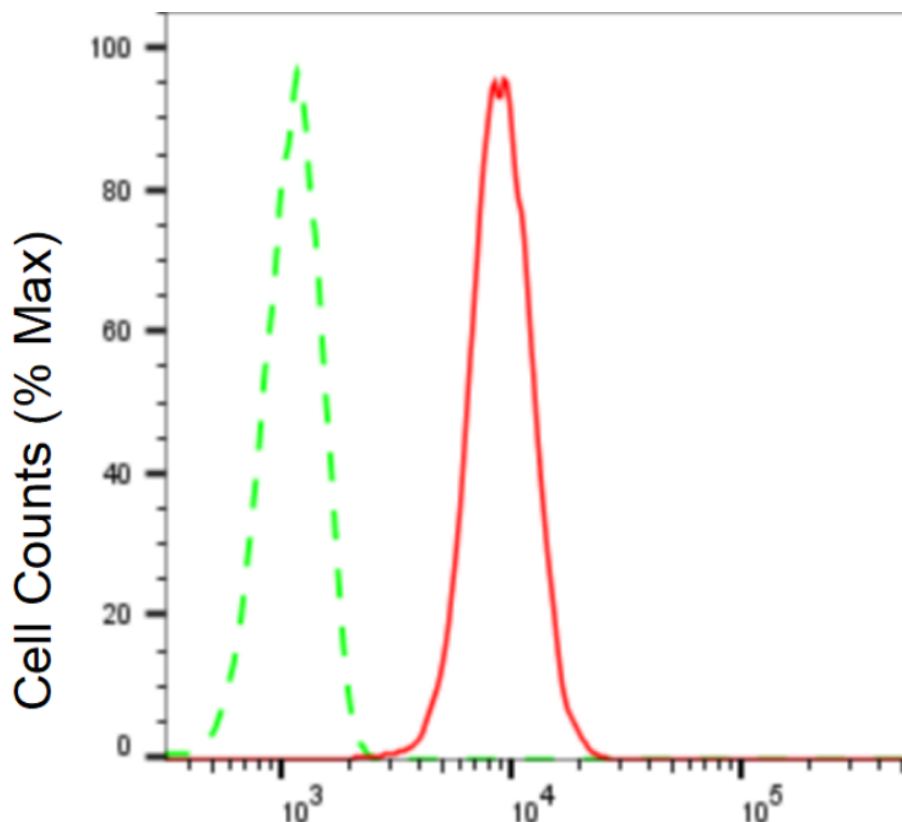
WWW.GENUINBIOTECH.COM

KD-Validated Anti-Acetyl-CoA acetyltransferase 2 Recombinant Rabbit

PAGE 2

Note: This product is for research use only.

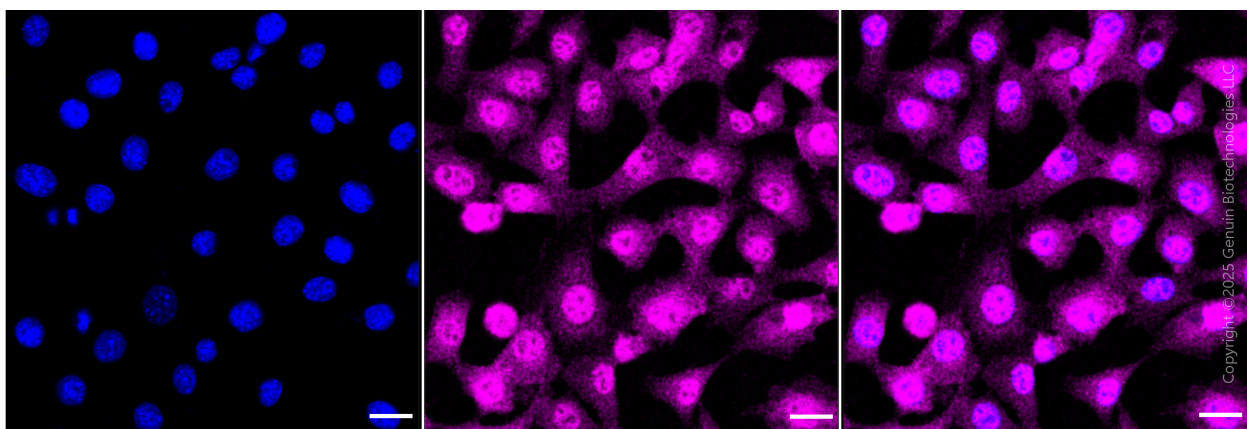
Validation Data



Copyright ©2024 Genuin Biotechnologies LLC

Acetyl-CoA acetyltransferase 2-Alexa Fluor® 647

Flow cytometric analysis of Acetyl-CoA acetyltransferase 2 expression in C2C12 cells using Acetyl-CoA acetyltransferase 2 antibody (Cat#61849, 1:2,000). Green, isotype control; red, Acetyl-CoA acetyltransferase 2.



Copyright ©2025 Genuin Biotechnologies LLC

Immunocytochemical staining of HepG2 cells with anti-Acetyl-CoA acetyltransferase 2 antibody (Cat#61849, 1:1,000). Nuclei were stained blue with anti-DAPI; Acetyl-CoA acetyltransferase 2

SUPPORT

SUPPORT@GENUINBIOTECH.COM
TEL: +1-540-855-7041

ORDERS

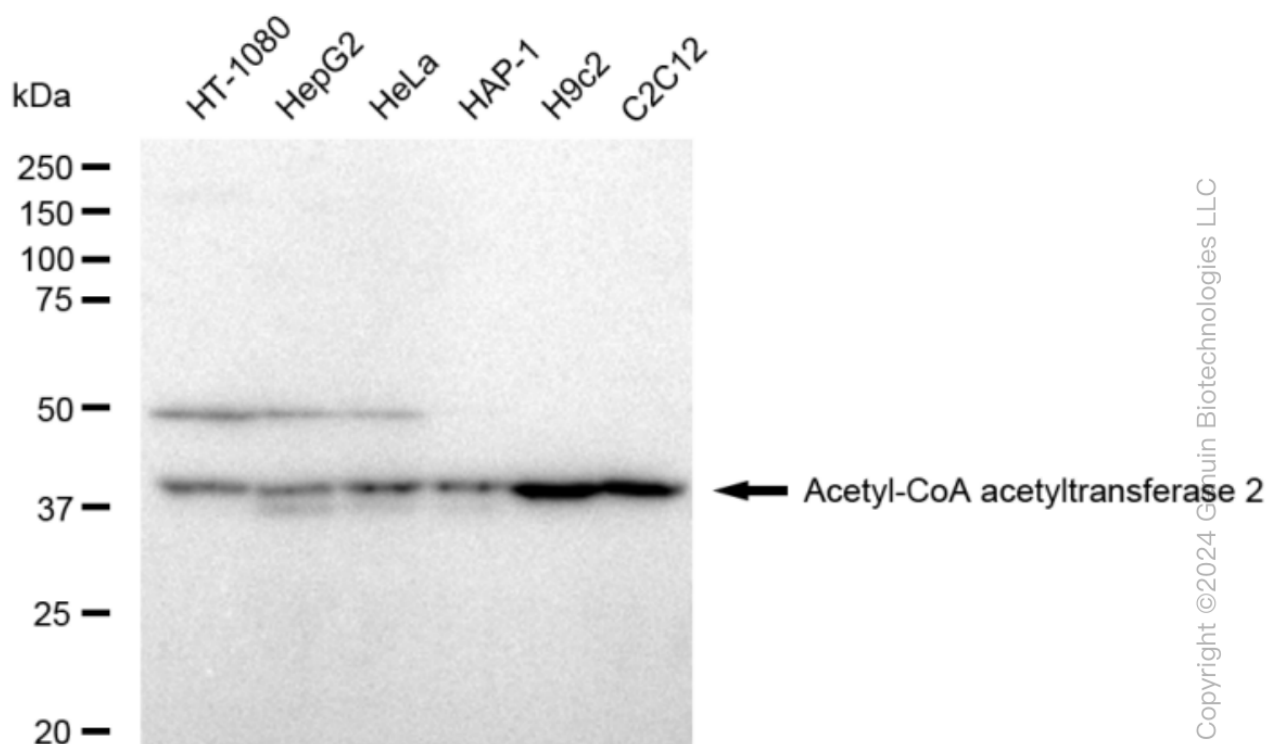
SALES@GENUINBIOTECH.COM
FAX: +1-540-855-7041

WWW.GENUINBIOTECH.COM

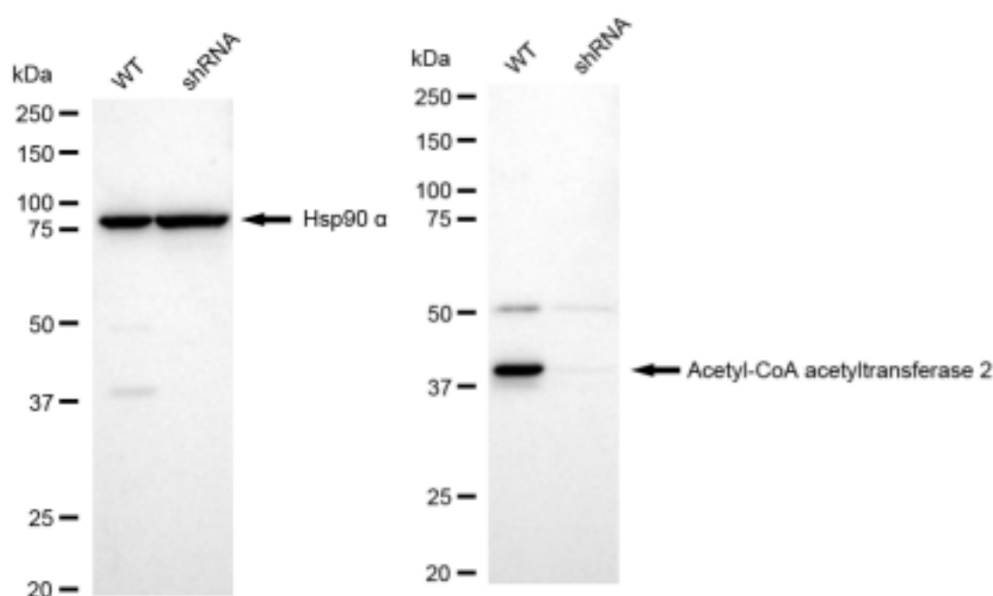
KD-Validated Anti-Acetyl-CoA acetyltransferase 2 Recombinant Rabbit

PAGE 3

was stained magenta with Alexa Fluor® 647. Images were taken using Leica stellaris 5. Protein abundance based on laser Intensity and smart gain: Medium. Scale bar, 20 µm.



Western blotting analysis using anti-Acetyl-CoA acetyltransferase 2 antibody (Cat#61849). Total cell lysates (30 µg) from various cell lines were loaded and separated by SDS-PAGE. The blot was incubated with anti-Acetyl-CoA acetyltransferase 2 antibody (Cat#61849, 1:5,000) and HRP-conjugated goat anti-rabbit secondary antibody (Cat#201, 1:20,000) respectively. Image was developed using FeQ™ ECL Substrate Kit (Cat#226).



SUPPORT

SUPPORT@GENUINBIOTECH.COM
TEL: +1-540-855-7041

ORDERS

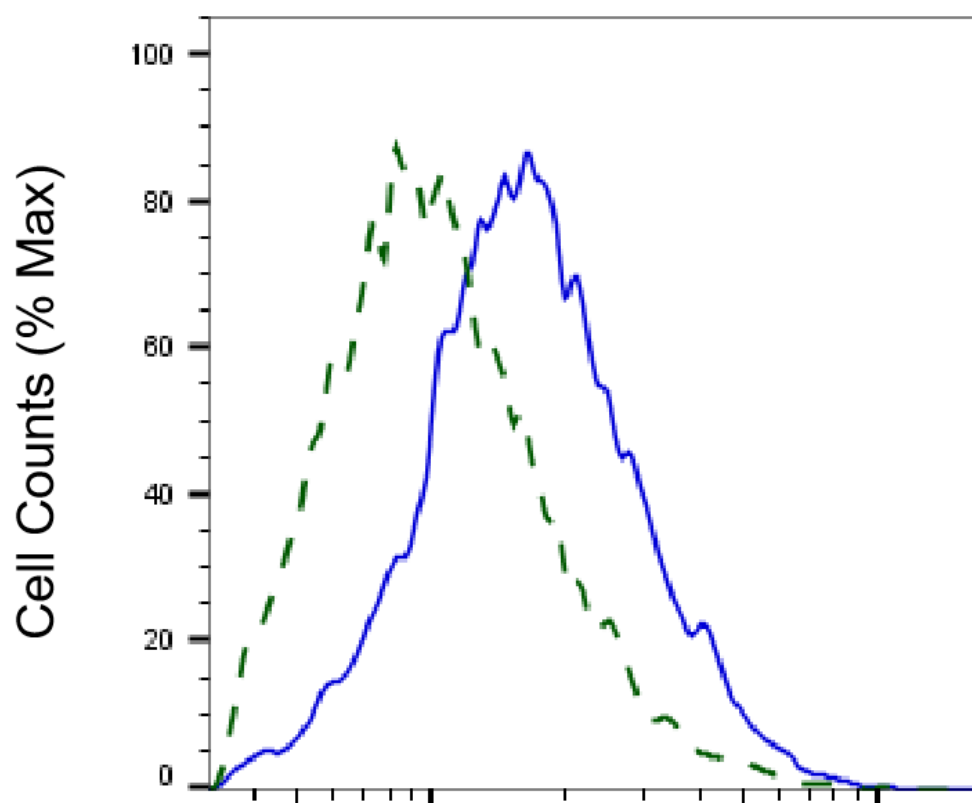
SALES@GENUINBIOTECH.COM
FAX: +1-540-855-7041

WWW.GENUINBIOTECH.COM

KD-Validated Anti-Acetyl-CoA acetyltransferase 2 Recombinant Rabbit

PAGE 4

Western blotting analysis using anti-Acetyl-CoA acetyltransferase 2 antibody (Cat#61849). Acetyl-CoA acetyltransferase 2 expression in wild type (WT) and Acetyl-CoA acetyltransferase 2 shRNA knockdown (KD) HeLa cells with 30 µg of total cell lysates. Hsp90 α serves as a loading control. The blot was incubated with anti-Acetyl-CoA acetyltransferase 2 antibody (Cat#61849, 1:5,000) and HRP-conjugated goat anti-rabbit secondary antibody (Cat#201, 1:20,000) respectively. Image was developed using FeQ™ ECL Substrate Kit (Cat#226).



Copyright ©2025 Genuin Biotechnologies LLC

Acetyl-CoA acetyltransferase 2-Alexa Fluor® 647

Validation of Acetyl-CoA acetyltransferase 2 knockdown using flow cytometry. Wild-type(WT, Blue) and knockdown(KD, Green) HeLa cells were stained with anti-Acetyl-CoA acetyltransferase 2 antibody (Cat#61849, 1:2,000) and analyzed using CytoFLEX.

SUPPORT

SUPPORT@GENUINBIOTECH.COM
TEL: +1-540-855-7041

ORDERS

SALES@GENUINBIOTECH.COM
FAX: +1-540-855-7041

WWW.GENUINBIOTECH.COM