

KD-Validated Anti-RUNX1/RUNX2/RUNX3 Recombinant Rabbit Monoclonal Antibody



Catalog #: 61851

Aliases

RUNX1; RUNX Family Transcription Factor 1; Runt-Related Transcription Factor 1; AMLCR1; CBFA2; AML1; Polyomavirus Enhancer-Binding Protein 2 Alpha B Subunit; SL3/AKV Core-Binding Factor Alpha B Subunit; SL3-3 Enhancer Factor 1 Alpha B Subunit; Runt Related Transcription Factor 1; Acute Myeloid Leukemia 1 Protein; Oncogene AML-1; PEBP2-Alpha B; PEA2-Alpha B; PEBP2A2; Core-Binding Factor, Runt Domain, Alpha Subunit; Core-Binding Factor Subunit Alpha-2; AML1-EVI-1 Fusion Protein; Acute Myeloid Leukemia 1; AML1-ETO Fusion Protein; AML1-ETO Fusion; Aml1 Oncogene; Mutant RUNX1; CBF-Alpha-2; AML1-EVI-1; PEBP2alpha; CBF2alpha; PEBP2aB; EVI-1

Background

Gene Name: RUNX1/RUNX2/RUNX3

NCBI Gene Entry: [861/864/860](#)

UniProt Entry: [Q01196/Q13761/Q13950](#)

Application Information

Molecular Weight: Predicted, 49 kDa, observed, 51 kDa

Clonality: Rabbit monoclonal antibody

Clone ID: 23GB4800

Species Reactivity: Human, mouse, rat

Applications Tested: Western blotting (WB), flow cytometry (FCM), immunocytochemistry (IC)

Immunogen

A synthesized peptide derived from human RUNX1/RUNX2/RUNX3

Isotype

Rabbit IgG

Storage Buffer

Supplied in PBS (pH 7.4) containing 50% glycerol, and 0.02% sodium azide.

Storage

Store at -20 °C for one year.

Recommended Dilutions

Western Blotting (WB): 1:1,000-1:5,000

SUPPORT

SUPPORT@GENUINBIOTECH.COM
TEL: +1-540-855-7041

ORDERS

SALES@GENUINBIOTECH.COM
FAX: +1-540-855-7041

WWW.GENUINBIOTECH.COM

KD-Validated Anti-RUNX1/RUNX2/RUNX3 Recombinant Rabbit Monoclonal Antibody

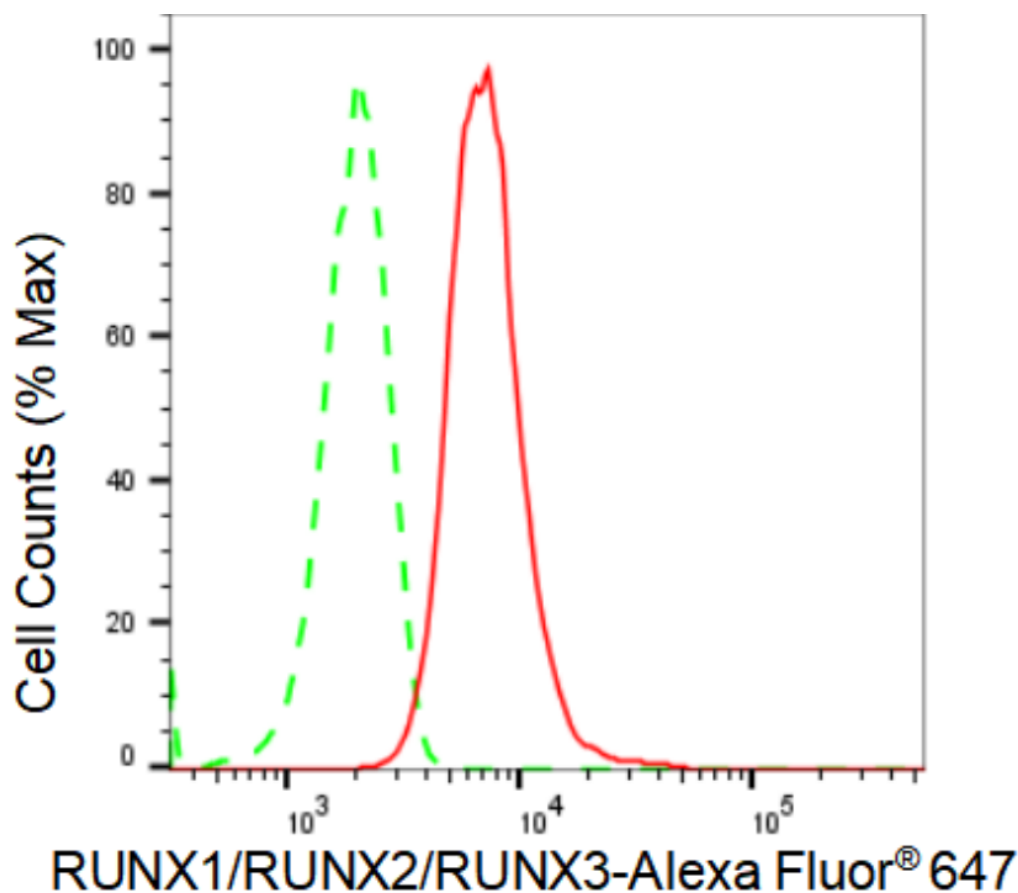
PAGE 2

Flow Cytometry (FCM): 1:2,000

Immunocytochemistry (IC): 1:100-1:1,000

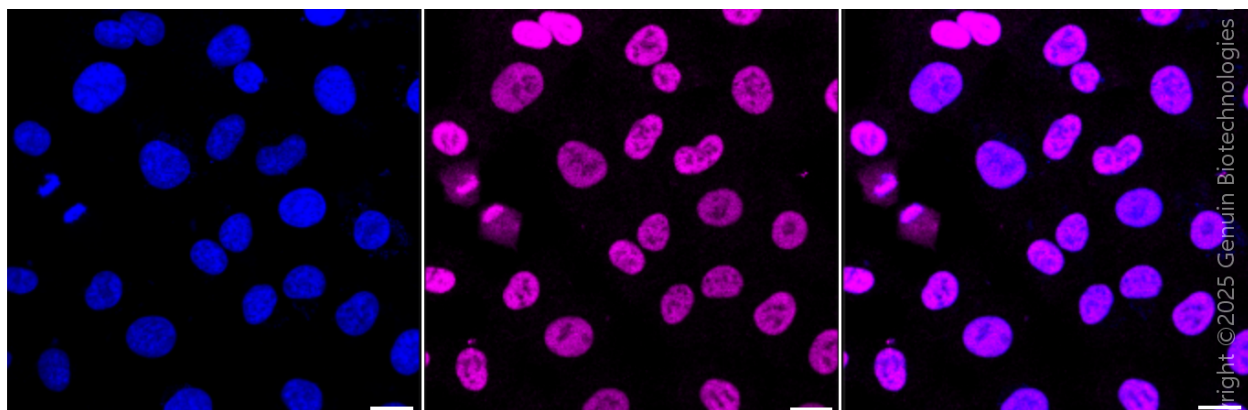
Note: This product is for research use only.

Validation Data



Copyright ©2024 Genuin Biotechnologies LLC

Flow cytometric analysis of RUNX1/RUNX2/RUNX3 expression in HT-1080 cells using RUNX1/RUNX2/RUNX3 antibody (Cat#61851, 1:2,000). Green, isotype control; red, RUNX1/RUNX2/RUNX3.



SUPPORT

SUPPORT@GENUINBIOTECH.COM
TEL: +1-540-855-7041

ORDERS

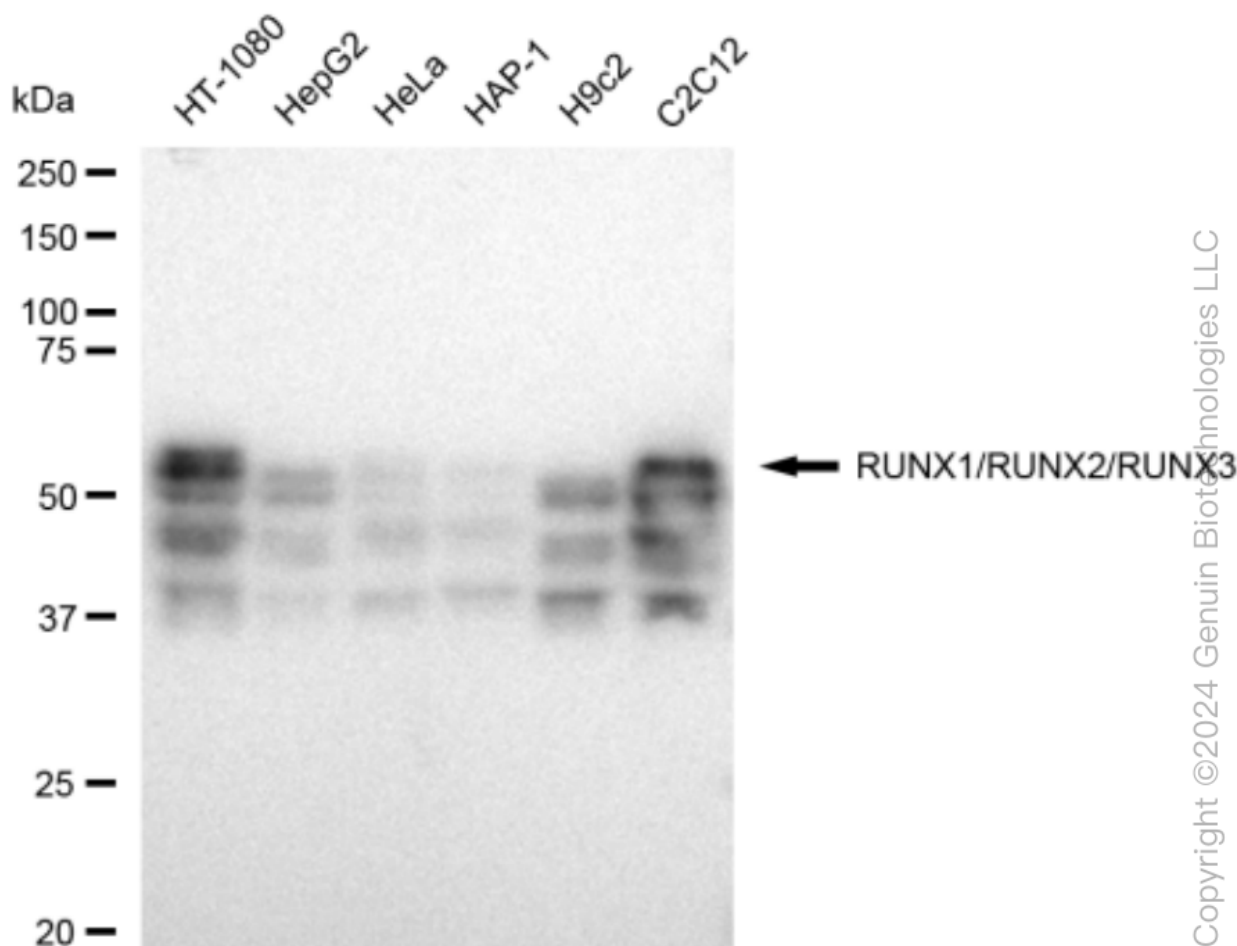
SALES@GENUINBIOTECH.COM
FAX: +1-540-855-7041

WWW.GENUINBIOTECH.COM

KD-Validated Anti-RUNX1/RUNX2/RUNX3 Recombinant Rabbit Monoclonal Antibody

PAGE 3

Immunocytochemical staining of HT-1080 cells with anti-RUNX1/RUNX2/RUNX3 antibody (Cat #61851, 1:1,000). Nuclei were stained blue with DAPI; RUNX1/RUNX2/RUNX3 was stained magenta with Alexa Fluor® 647. Images were taken using Leica stellaris 5. Protein abundance based on laser Intensity and smart gain: Medium. Scale bar, 20 μ m.



Western blotting analysis using anti-RUNX1/RUNX2/RUNX3 antibody (Cat#61851). Total cell lysates (30 μ g) from various cell lines were loaded and separated by SDS-PAGE. The blot was incubated with anti-RUNX1/RUNX2/RUNX3 antibody (Cat#61851, 1:5,000) and HRP-conjugated goat anti-rabbit secondary antibody (Cat#201, 1:20,000) respectively. Image was developed using FeQ™ ECL Substrate Kit (Cat#226).

SUPPORT

SUPPORT@GENUINBIOTECH.COM
TEL: +1-540-855-7041

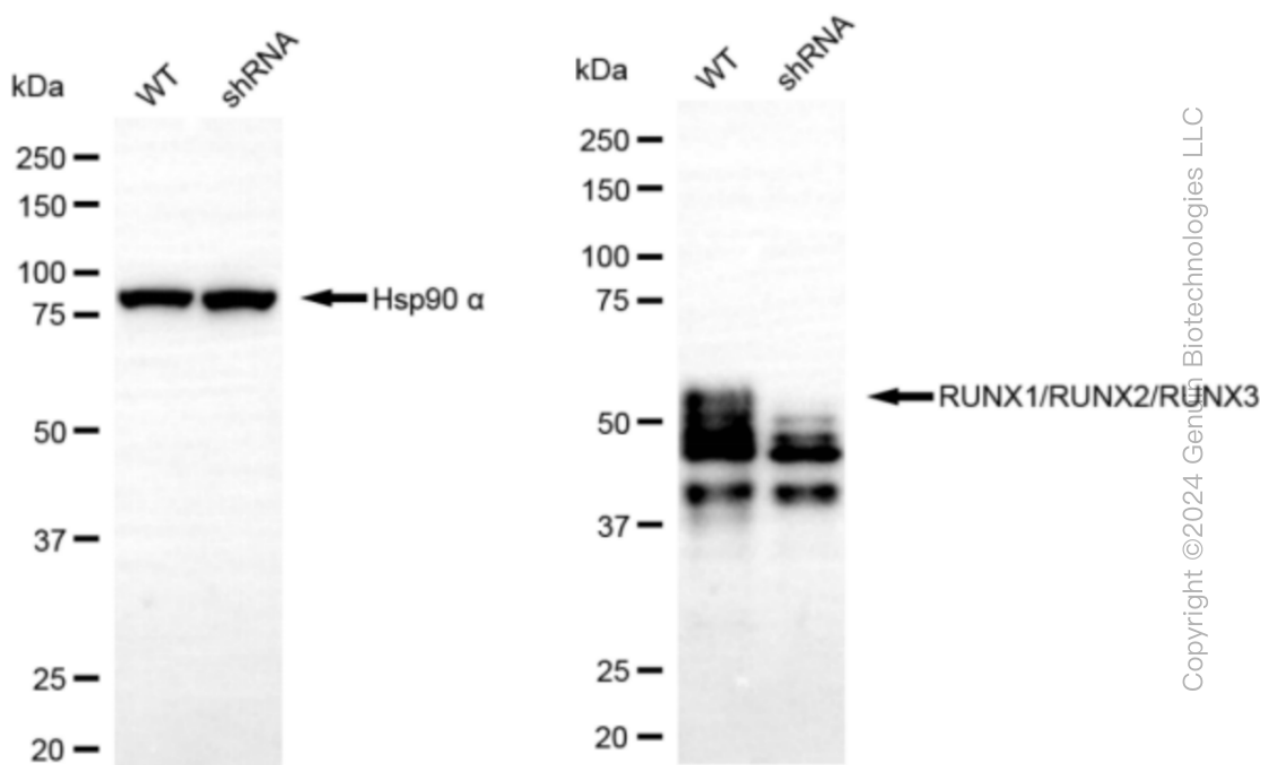
ORDERS

SALES@GENUINBIOTECH.COM
FAX: +1-540-855-7041

WWW.GENUINBIOTECH.COM

KD-Validated Anti-RUNX1/RUNX2/RUNX3 Recombinant Rabbit Monoclonal Antibody

PAGE 4



Western blotting analysis using anti-RUNX1/RUNX2/RUNX3 antibody (Cat#61851). RUNX1/RUNX2/RUNX3 expression in wild type (WT) and RUNX1/RUNX2/RUNX3 shRNA knockdown (KD) HeLa cells with 30 µg of total cell lysates. Hsp90 α serves as a loading control. The blot was incubated with anti-RUNX1/RUNX2/RUNX3 antibody (Cat#61851, 1:5,000) and HRP-conjugated goat anti-rabbit secondary antibody (Cat#201, 1:20,000) respectively. Image was developed using FeQ™ ECL Substrate Kit (Cat#226).

SUPPORT

SUPPORT@GENUINBIOTECH.COM
TEL: +1-540-855-7041

ORDERS

SALES@GENUINBIOTECH.COM
FAX: +1-540-855-7041

WWW.GENUINBIOTECH.COM