

# KD-Validated Anti-Histone deacetylase 1 Recombinant Rabbit Monoclonal Antibody



**Catalog #: 61852**

## Aliases

HDAC1; Histone Deacetylase; HD1; GON-10; RPD3L1; KDAC1; Protein Deacetylase  
HDAC1; Protein Deacetylase HDAC1; EC 3.5.1.98; Reduced Potassium Dependency, Yeast  
Homolog-Like 1; EC 3.5.1.; RPD3

## Background

Gene Name: HDAC1  
NCBI Gene Entry: [3065](#)  
UniProt Entry: [Q13547](#)

## Application Information

Molecular Weight: Predicted, 55 kDa, observed, 55 kDa  
Clonality: Rabbit monoclonal antibody  
Clone ID: 23GB4785  
Species Reactivity: Human, mouse, rat  
Applications Tested: Western blotting (WB), flow cytometry (FCM), immunocytochemistry (IC)

## Immunogen

A synthesized peptide derived from human HDAC1

## Isotype

Rabbit IgG

## Storage Buffer

Supplied in PBS (pH 7.4) containing 50% glycerol, and 0.02% sodium azide.

## Storage

Store at -20 °C for one year.

## Recommended Dilutions

Western Blotting (WB): 1:1,000-1:5,000  
Flow Cytometry (FCM): 1:2,000  
Immunocytochemistry (IC): 1:100-1:1,000

**Note:** This product is for research use only.

---

### SUPPORT

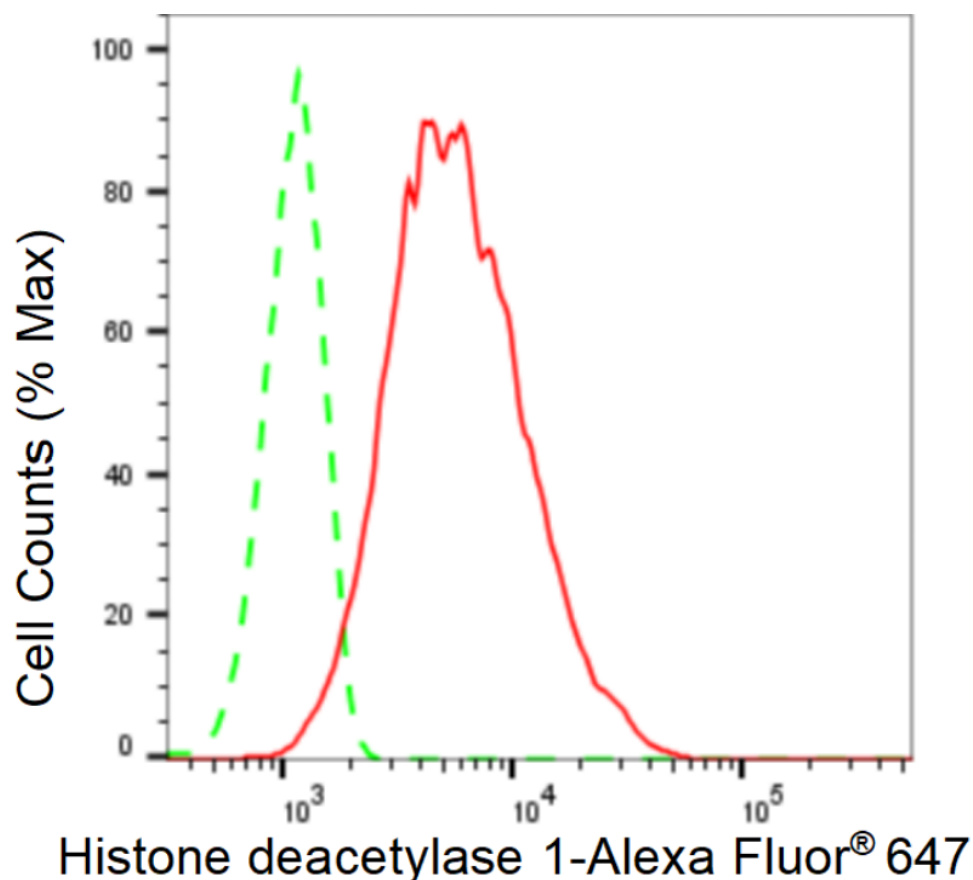
SUPPORT@GENUINBIOTECH.COM  
TEL: +1-540-855-7041

### ORDERS

SALES@GENUINBIOTECH.COM  
FAX: +1-540-855-7041

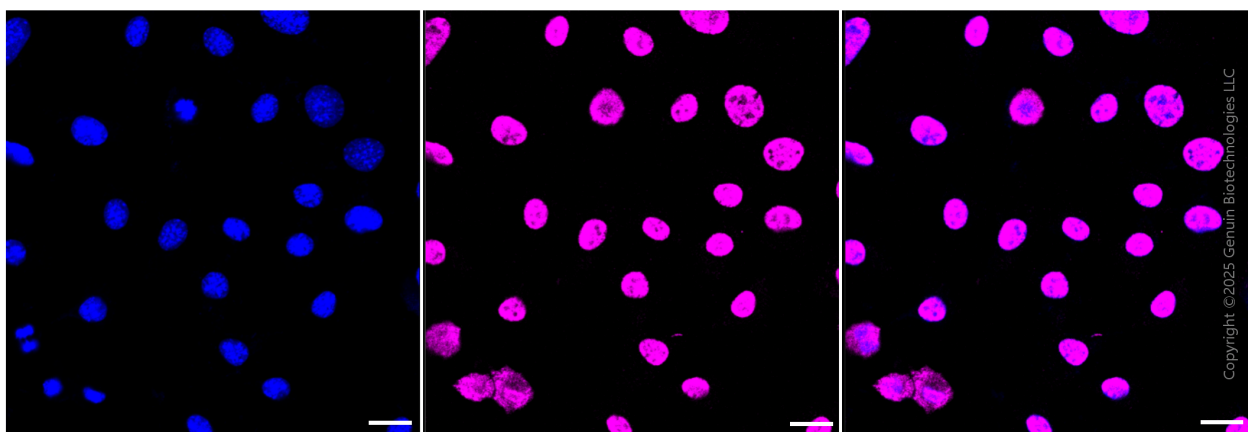
[WWW.GENUINBIOTECH.COM](http://WWW.GENUINBIOTECH.COM)

**Validation Data**



Copyright ©2024 Genuin Biotechnologies LLC

Flow cytometric analysis of Histone deacetylase 1 expression in C2C12 cells using Histone deacetylase 1 antibody (61852, 1:2,000). Green, isotype control; red, Histone deacetylase 1.



Immunocytochemical staining of HepG2 cells with anti-Histone deacetylase 1 antibody (Cat#61852, 1:1,000). Nuclei were stained blue with anti-DAPI; Histone deacetylase 1 was stained magenta with Alexa Fluor® 647. Images were taken using Leica stellaris 5. Protein abundance based on laser Intensity and smart gain: High. Scale bar, 20  $\mu$ m.

**SUPPORT**

SUPPORT@GENUINBIOTECH.COM  
TEL: +1-540-855-7041

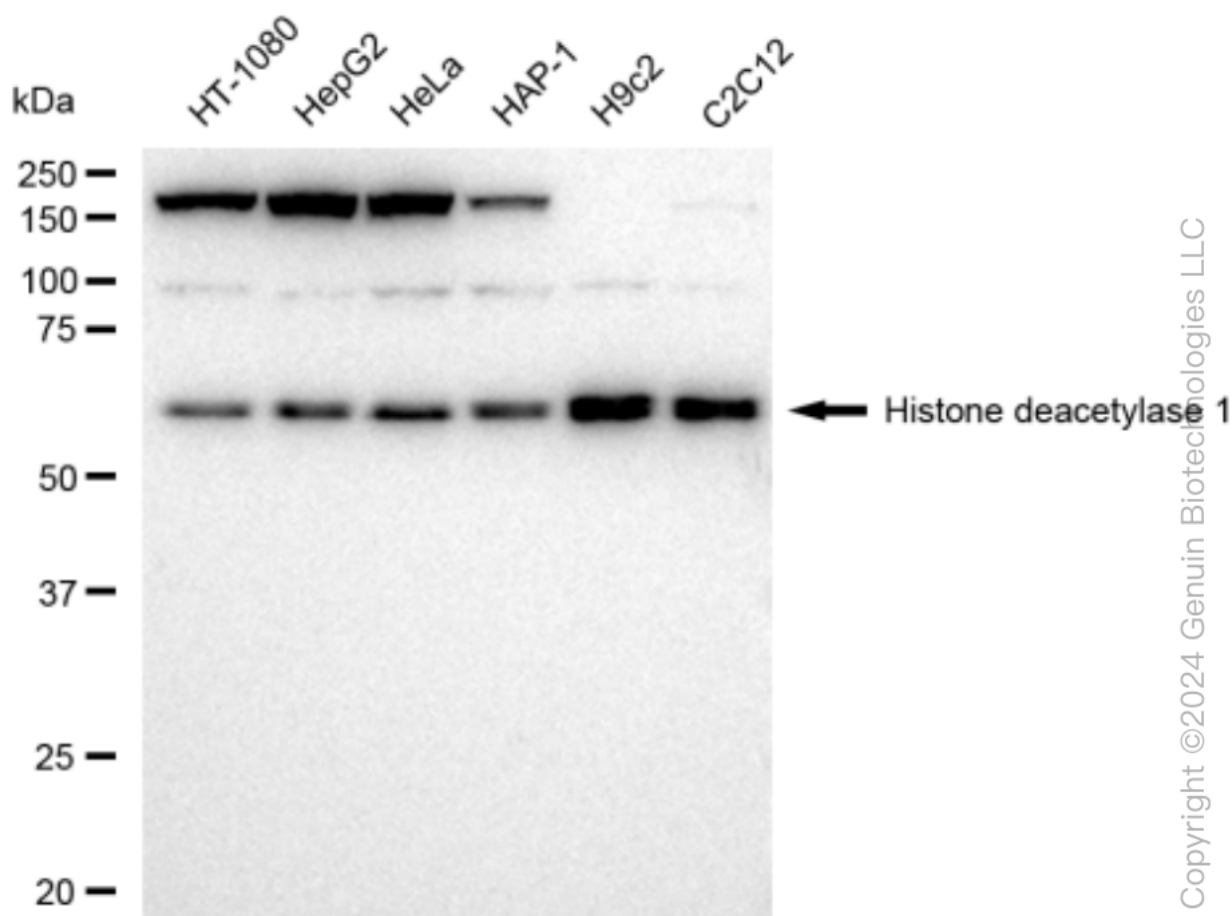
**ORDERS**

SALES@GENUINBIOTECH.COM  
FAX: +1-540-855-7041

**WWW.GENUINBIOTECH.COM**

## KD-Validated Anti-Histone deacetylase 1 Recombinant Rabbit Monoclonal Antibody

PAGE 3



Western blotting analysis using anti-Histone deacetylase 1 antibody (Cat#61852). Total cell lysates (30 µg) from various cell lines were loaded and separated by SDS-PAGE. The blot was incubated with anti-Histone deacetylase 1 antibody (Cat#61852, 1:5,000) and HRP-conjugated goat anti-rabbit secondary antibody (Cat#201, 1:20,000) respectively. Image was developed using FeQ™ ECL Substrate Kit (Cat#226).

### SUPPORT

SUPPORT@GENUINBIOTECH.COM  
TEL: +1-540-855-7041

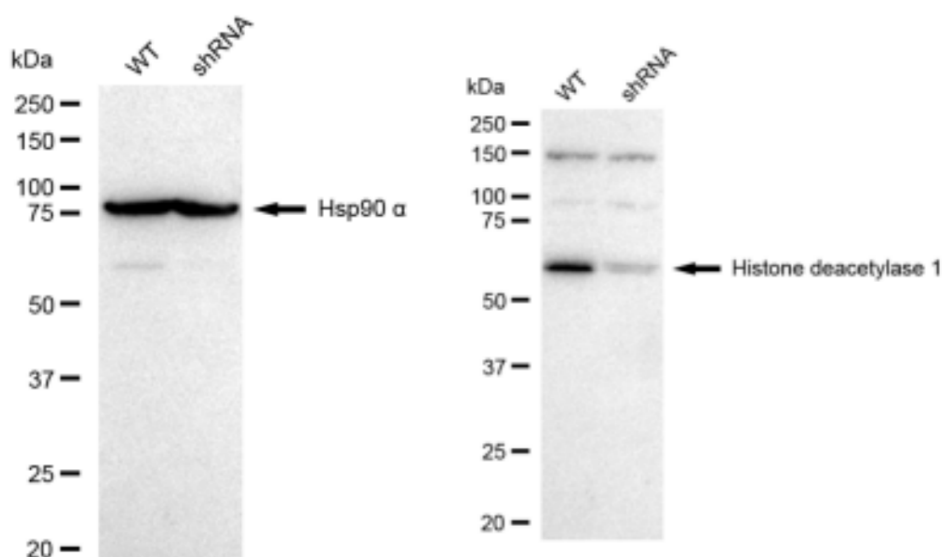
### ORDERS

SALES@GENUINBIOTECH.COM  
FAX: +1-540-855-7041

[WWW.GENUINBIOTECH.COM](http://WWW.GENUINBIOTECH.COM)

## KD-Validated Anti-Histone deacetylase 1 Recombinant Rabbit Monoclonal Antibody

PAGE 4



Copyright ©2024 Genuin Biotechnologies LLC

Western blotting analysis using anti-Histone deacetylase 1 antibody (Cat#61852). Histone deacetylase 1 expression in wild type (WT) and Histone deacetylase 1 shRNA knockdown (KD) HeLa cells with 30  $\mu$ g of total cell lysates. Hsp90  $\alpha$  serves as a loading control. The blot was incubated with anti-Histone deacetylase 1 antibody (Cat#61852, 1:5,000) and HRP-conjugated goat anti-rabbit secondary antibody (Cat#201, 1:20,000) respectively. Image was developed using FeQ™ ECL Substrate Kit (Cat#226).

### SUPPORT

SUPPORT@GENUINBIOTECH.COM  
TEL: +1-540-855-7041

### ORDERS

SALES@GENUINBIOTECH.COM  
FAX: +1-540-855-7041

[WWW.GENUINBIOTECH.COM](http://WWW.GENUINBIOTECH.COM)