

# KD-Validated Anti-DPP9 Mouse Monoclonal Antibody



**Catalog #: 61855**

## Aliases

DPP9; Dipeptidyl Peptidase 9; Dipeptidyl Peptidase-Like Protein 9; Dipeptidyl Peptidase IX; DPP IX; DPRP-2; DPLP9; DPRP2; DP9; Dipeptidyl Peptidase IV-Related Protein-2; Dipeptidyl Peptidase IV-Related Protein 2; Dipeptidylpeptidase 9; EC 3.4.14.5; IMD111; HATIS

## Background

Gene Name: DPP9

NCBI Gene Entry: [91039](#)

UniProt Entry: [Q86TI2](#)

## Application Information

Molecular Weight: Predicted, 98 kDa; observed, 98 kDa

Clonality: Mouse monoclonal antibody

Clone ID: 25GB3990

Species Reactivity: Human, mouse

Applications Tested: Western blotting (WB), flow cytometry (FCM), immunocytochemistry (IC)

## Immunogen

Recombinant protein of human DPP9

## Isotype

Mouse IgG1

## Storage Buffer

Supplied in PBS (pH 7.4) containing 50% glycerol, and 0.02% sodium azide.

## Storage

Store at -20 °C for one year.

## Recommended Dilutions

Western Blotting (WB): 1:500-1:2,500

Flow Cytometry (FCM): 1:1,000

Immunocytochemistry (IC): 1:100-1:1,000

---

### SUPPORT

SUPPORT@GENUINBIOTECH.COM  
TEL: +1-540-855-7041

### ORDERS

SALES@GENUINBIOTECH.COM  
FAX: +1-540-855-7041

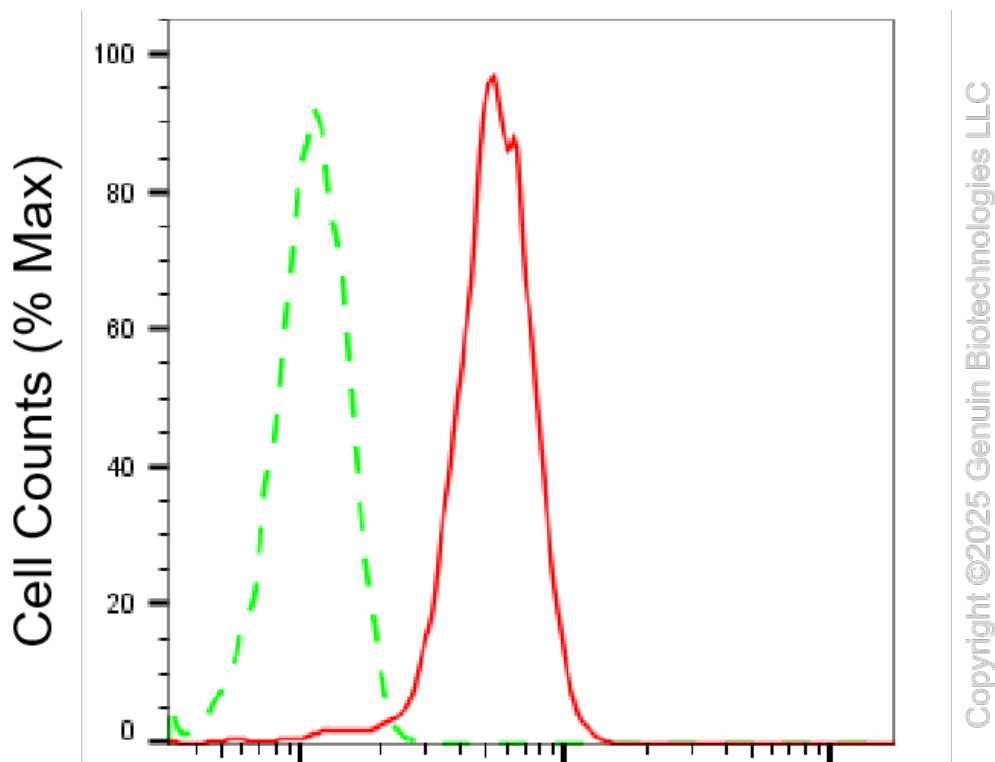
[WWW.GENUINBIOTECH.COM](http://WWW.GENUINBIOTECH.COM)

## KD-Validated Anti-DPP9 Mouse Monoclonal Antibody

PAGE 2

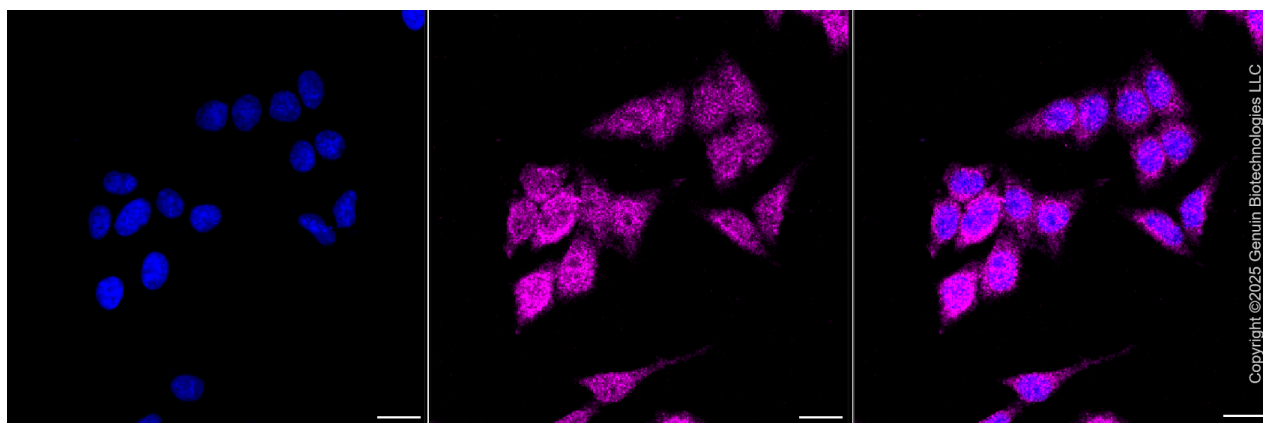
**Note:** This product is for research use only.

### Validation Data



### Dipeptidyl peptidase 9-Alexa Fluor® 647

Flow cytometric analysis of Dipeptidyl peptidase 9 expression in HepG2 cells using anti-Dipeptidyl peptidase 9 antibody (Cat#61855, 1:1,000). Green, isotype control; red, Dipeptidyl peptidase 9.



Immunocytochemical staining of HepG2 cells with anti-Dipeptidyl peptidase 9 antibody (Cat#61855, 1:1,000). Nuclei were stained blue with DAPI; Dipeptidyl peptidase 9 was stained magenta with Alexa Fluor® 647. Images were taken using Leica stellaris 5. Protein abundance

#### SUPPORT

SUPPORT@GENUINBIOTECH.COM  
TEL: +1-540-855-7041

#### ORDERS

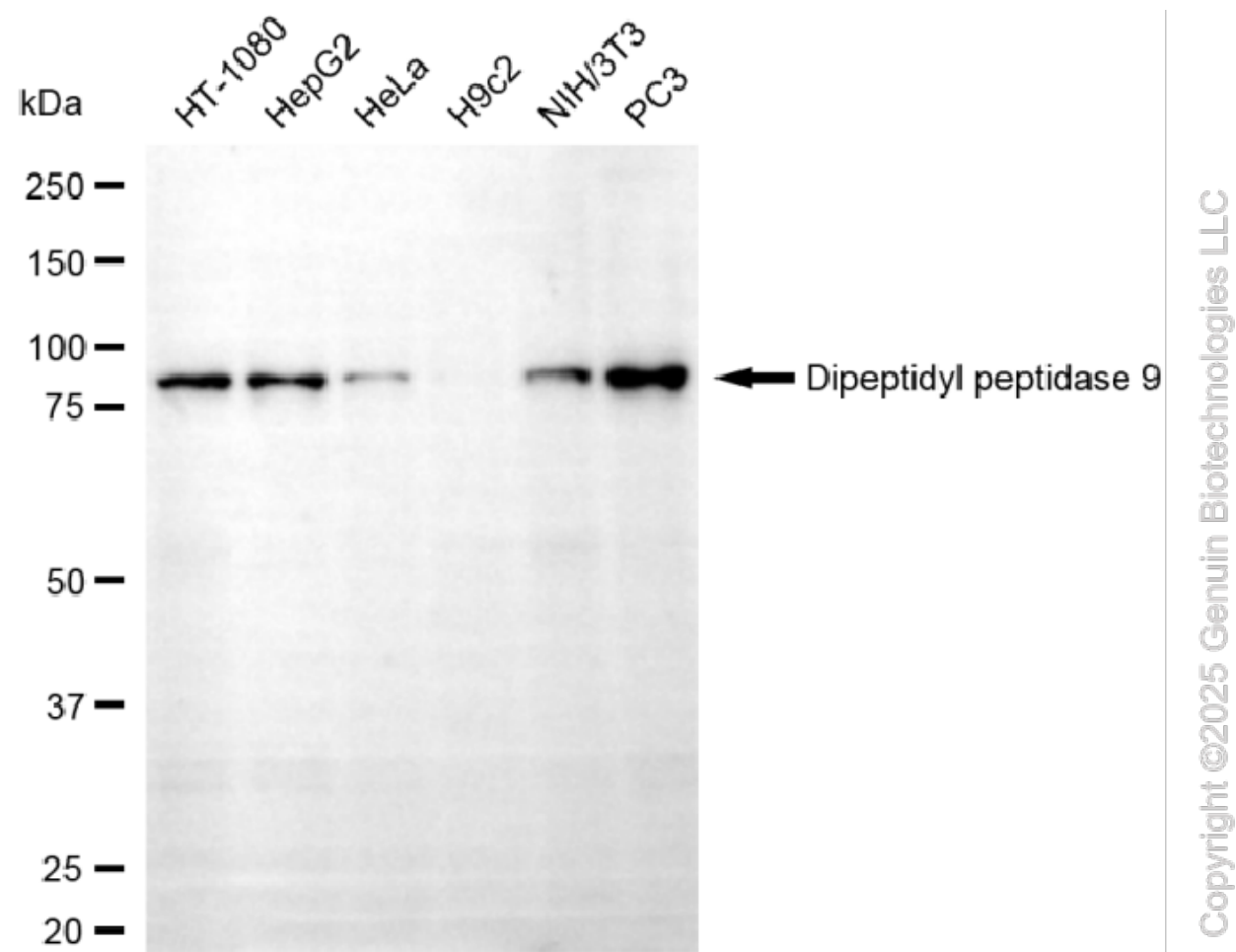
SALES@GENUINBIOTECH.COM  
FAX: +1-540-855-7041

[WWW.GENUINBIOTECH.COM](http://WWW.GENUINBIOTECH.COM)

## KD-Validated Anti-DPP9 Mouse Monoclonal Antibody

PAGE 3

based on laser Intensity and smart gain: Medium. Scale bar, 20  $\mu$ m.



Western blotting analysis using anti-dipeptidyl peptidase 9 antibody (Cat#61855). Total cell lysates (30  $\mu$ g) from various cell lines were loaded and separated by SDS-PAGE. The blot was incubated with anti-dipeptidyl peptidase 9 antibody (Cat#61855, 1:2,500) and HRP-conjugated goat anti-mouse secondary antibody (Cat#101, 1:20,000) respectively. Image was developed using NaQ™ ECL Substrate Kit (Cat#716).

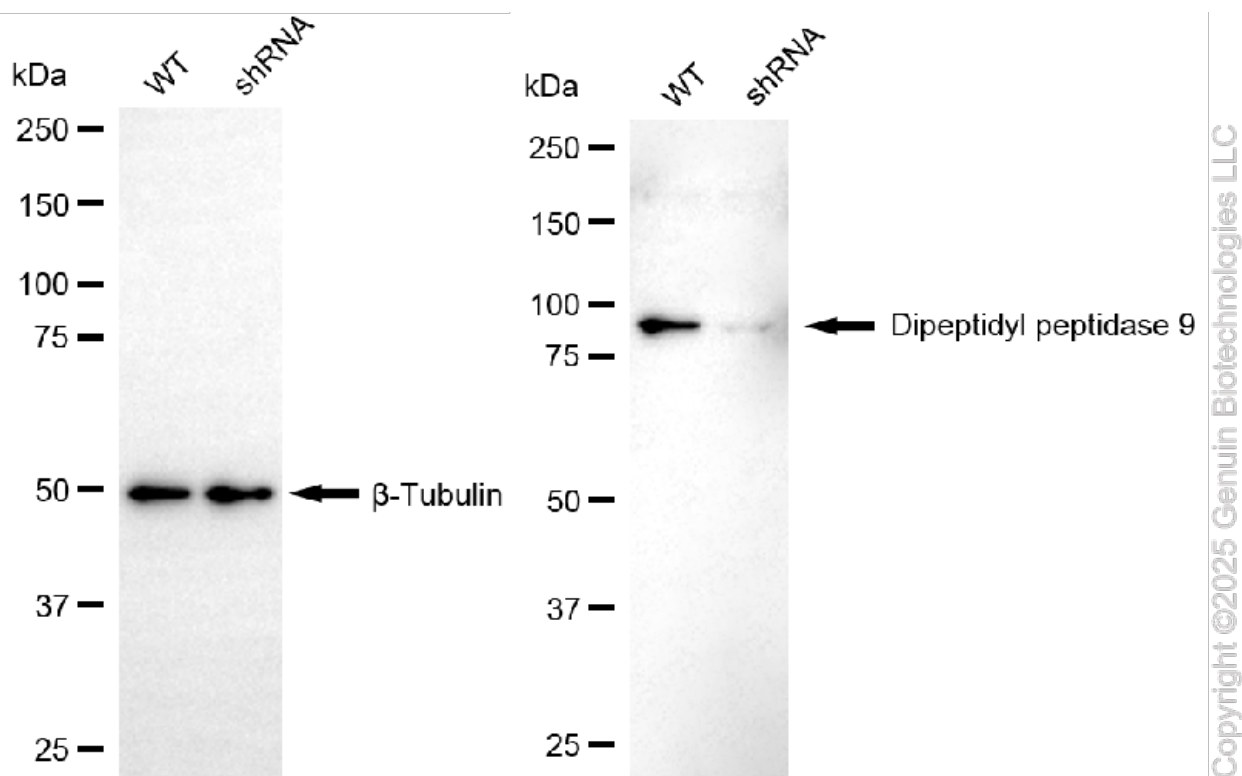
### SUPPORT

SUPPORT@GENUINBIOTECH.COM  
TEL: +1-540-855-7041

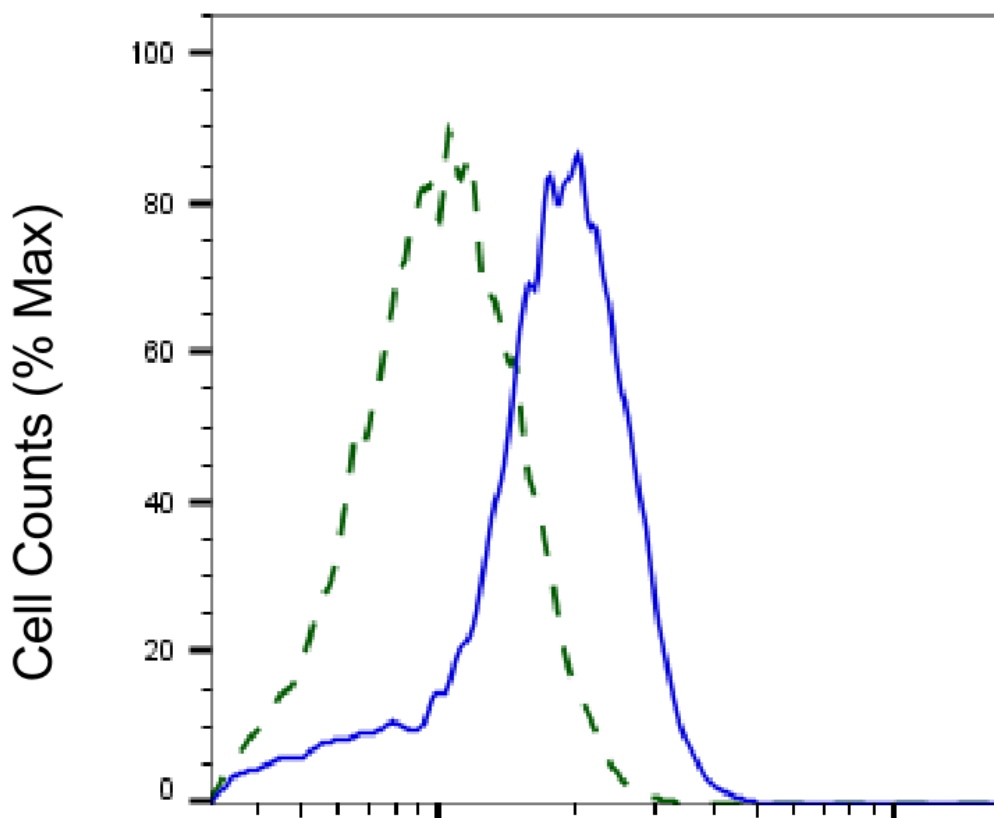
### ORDERS

SALES@GENUINBIOTECH.COM  
FAX: +1-540-855-7041

WWW.GENUINBIOTECH.COM



Western blotting analysis using anti-dipeptidyl peptidase 9 antibody (Cat#61855). Dipeptidyl peptidase 9 expression in wild type (WT) and dipeptidyl peptidase 9(DPP9) shRNA knockdown (KD) HeLa cells with 20  $\mu$ g of total cell lysates.  $\beta$ -Tubulin serves as a loading control. The blot was incubated with anti-dipeptidyl peptidase 9 antibody (Cat#61855, 1:1,000) and HRP-conjugated goat anti-mouse secondary antibody (Cat#101, 1:20,000) respectively. Image was developed using FeQTM ECL Substrate Kit (Cat#226).



Copyright ©2025 Genuin Biotechnologies LLC

## Dipeptidyl peptidase 9-Alexa Fluor® 647

Validation of Dipeptidyl peptidase 9 knockdown using flow cytometry. Wild-type(WT, Blue) and knockdown(KD, Green) HeLa cells were stained with anti-Dipeptidyl peptidase 9 antibody (Cat#61855, 1:2,000) and analyzed using BD flow cytometer.

### SUPPORT

SUPPORT@GENUINBIOTECH.COM  
TEL: +1-540-855-7041

### ORDERS

SALES@GENUINBIOTECH.COM  
FAX: +1-540-855-7041

[WWW.GENUINBIOTECH.COM](http://WWW.GENUINBIOTECH.COM)