

KD-Validated Anti-Galectin 3 Recombinant Rabbit Monoclonal Antibody



Catalog #: 61857

Aliases

LGALS3; Galectin 3; GALIG; Advanced Glycation End-Product Receptor 3; Lectin, Galactoside-Binding, Soluble, 3; Carbohydrate-Binding Protein 35; Galactose-Specific Lectin 3; Laminin-Binding Protein 3; IgE-Binding Protein 3; 35 KDa Lectin; Lectin L-29; Galectin-3; LGALS2; MAC-2; GALBP; MAC2; Epididymis Secretory Sperm Binding Protein 3; Galactoside-Binding Protein; MAC-2 Antigen; Mac-2 Antigen; CBP 35; CBP35; Gal-3; GAL3; L-31; L31

Background

Gene Name: LGALS3

NCBI Gene Entry: [3958](#)

UniProt Entry: [P17931](#)

Application Information

Molecular Weight: Predicted, 26 kDa, observed, 26 kDa

Clonality: Rabbit monoclonal antibody

Clone ID: 23GB4780

Species Reactivity: Human, mouse, rat

Applications Tested: Western blotting (WB), flow cytometry (FCM), immunocytochemistry (IC)

Immunogen

A synthesized peptide derived from human Galectin 3

Isotype

Rabbit IgG

Storage Buffer

Supplied in PBS (pH 7.4) containing 50% glycerol, and 0.02% sodium azide.

Storage

Store at -20 °C for one year.

Recommended Dilutions

Western Blotting (WB): 1:1,000-1:5,000

Immunocytochemistry (IC): 1:100-1:1,000

Flow Cytometry (FCM): 1:2,000

SUPPORT

SUPPORT@GENUINBIOTECH.COM
TEL: +1-540-855-7041

ORDERS

SALES@GENUINBIOTECH.COM
FAX: +1-540-855-7041

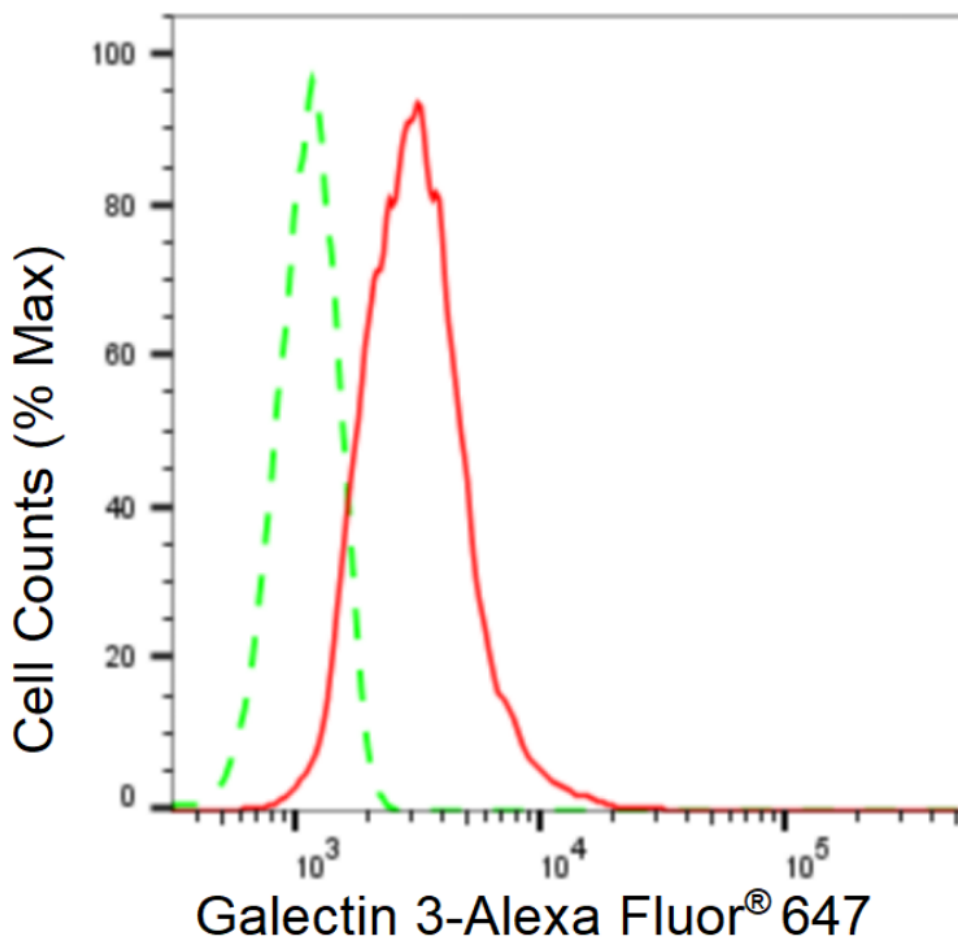
WWW.GENUINBIOTECH.COM

KD-Validated Anti-Galectin 3 Recombinant Rabbit Monoclonal Antibody

PAGE 2

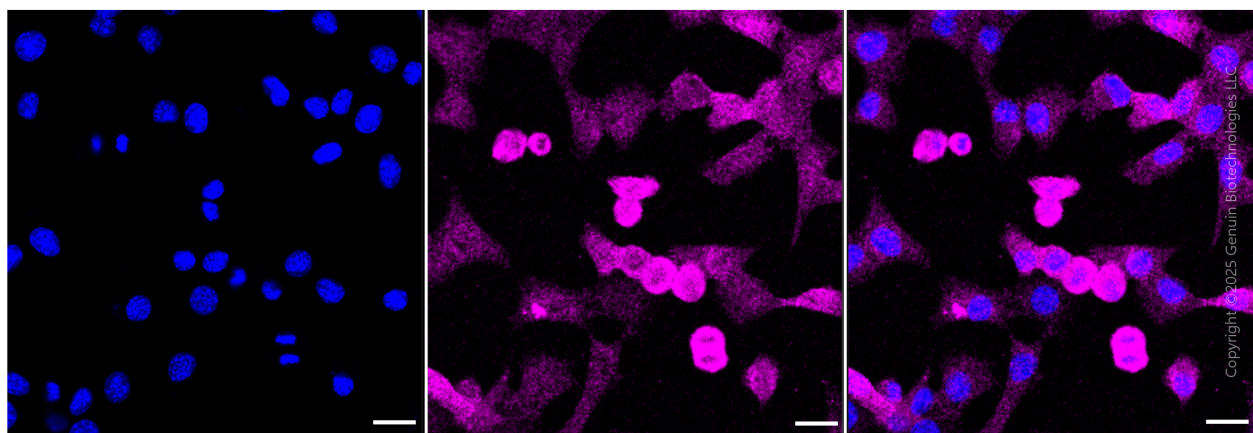
Note: This product is for research use only.

Validation Data



Copyright ©2024 Genuin Biotechnologies LLC

Flow cytometric analysis of Galectin 3 expression in C2C12 cells using Galectin 3 antibody (61857, 1:2,000). Green, isotype control; red, Galectin 3.



Copyright ©2025 Genuin Biotechnologies LLC

SUPPORT

SUPPORT@GENUINBIOTECH.COM
TEL: +1-540-855-7041

ORDERS

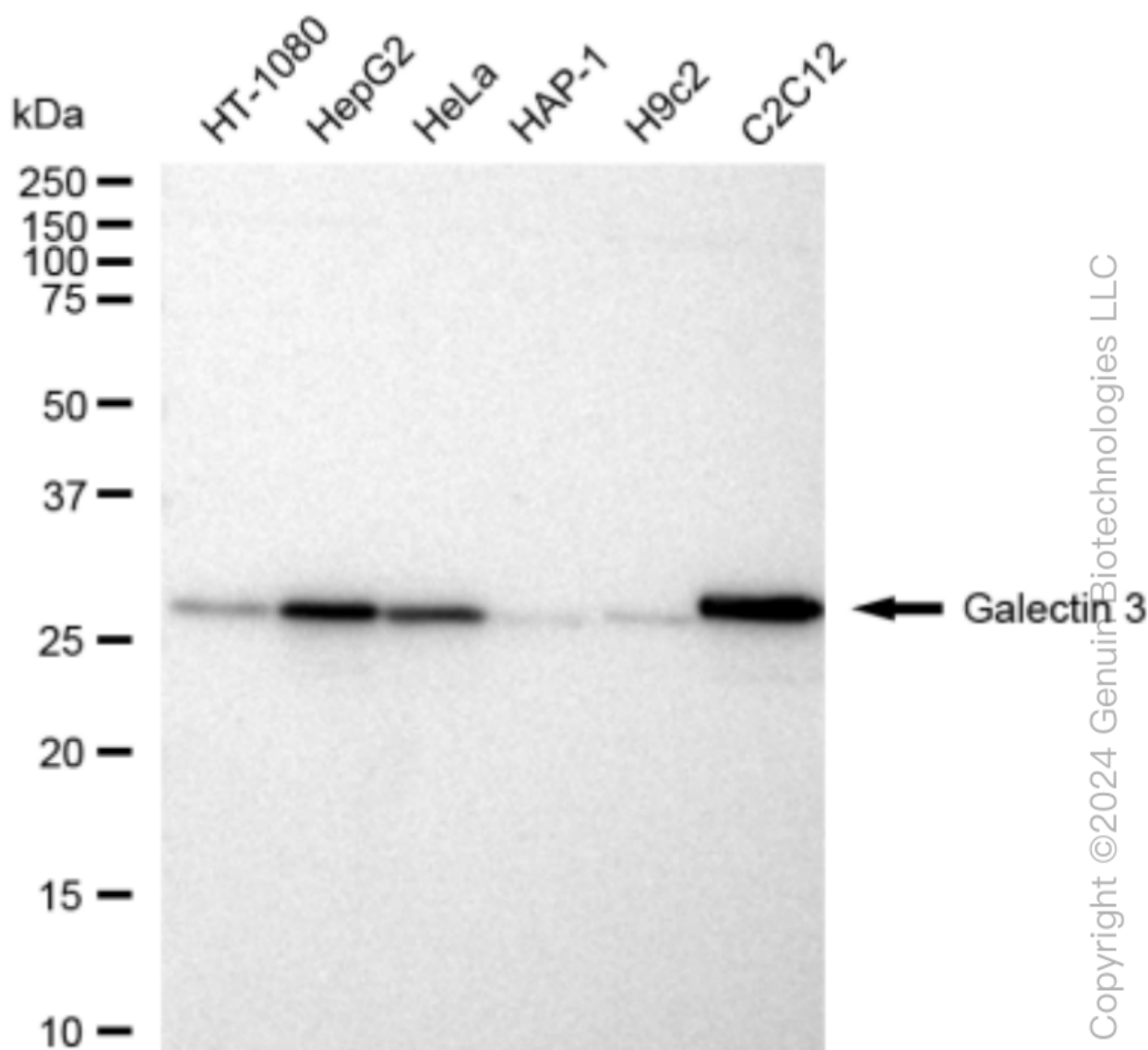
SALES@GENUINBIOTECH.COM
FAX: +1-540-855-7041

WWW.GENUINBIOTECH.COM

KD-Validated Anti-Galectin 3 Recombinant Rabbit Monoclonal Antibody

PAGE 3

Fluor® 647. Images were taken using Leica stellaris 5. Protein abundance based on laser Intensity and smart gain: Medium. Scale bar, 20 µm.



Western blotting analysis using anti-Galectin 3 antibody (Cat#61857). Total cell lysates (30 µg) from various cell lines were loaded and separated by SDS-PAGE. The blot was incubated with anti-Galectin 3 antibody (Cat#61857, 1:5,000) and HRP-conjugated goat anti-rabbit secondary antibody (Cat#201, 1:20,000) respectively. Image was developed using FeQ™ ECL Substrate Kit (Cat#226).

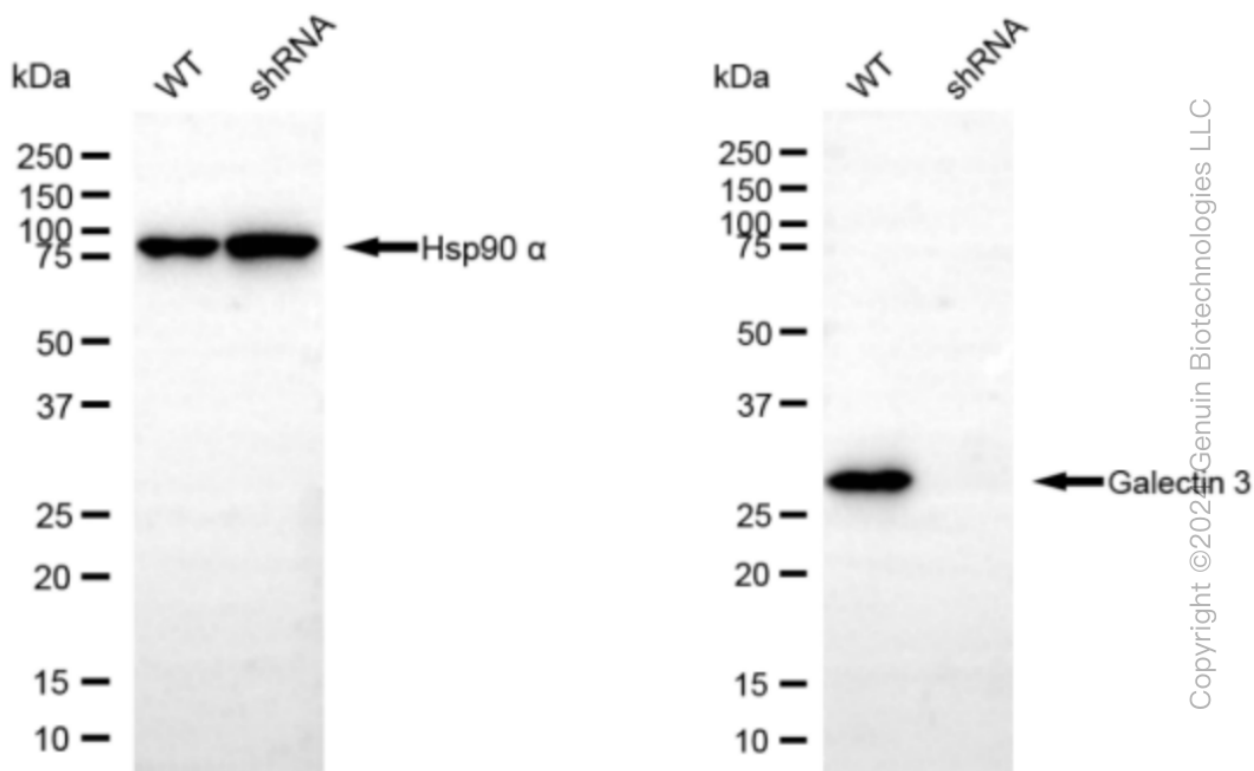
SUPPORT

SUPPORT@GENUINBIOTECH.COM
TEL: +1-540-855-7041

ORDERS

SALES@GENUINBIOTECH.COM
FAX: +1-540-855-7041

WWW.GENUINBIOTECH.COM



Western blotting analysis using anti-Galectin 3 antibody (Cat#61857). Galectin 3 expression in wild type (WT) and Galectin 3 shRNA knockdown (KD) HeLa cells with 30 μ g of total cell lysates. Hsp90 α serves as a loading control. The blot was incubated with anti-Galectin 3 antibody (Cat#61857, 1:5,000) and HRP-conjugated goat anti-rabbit secondary antibody (Cat#201, 1:20,000) respectively. Image was developed using FeQTM ECL Substrate Kit (Cat#226).