

# KD-Validated Anti-Epsin 2 Mouse Monoclonal Antibody



**Catalog #: 61860**

## Aliases

EPN2; Epsin 2; KIAA1065; EHB21; EPS-15-Interacting Protein 2; Eps15 Binding Protein; Epsin-2

## Background

Gene Name: EPN2

NCBI Gene Entry: [22905](#)

UniProt Entry: [O95208](#)

## Application Information

Molecular Weight: Predicted, 68 kDa; observed, 68 kDa

Clonality: Mouse monoclonal antibody

Clone ID: 25GB3995

Species Reactivity: Human

Applications Tested: Western blotting (WB), flow cytometry (FCM), immunocytochemistry (IC)

## Immunogen

Recombinant protein of human EPN2

## Isotype

Mouse IgG1

## Storage Buffer

Supplied in PBS (pH 7.4) containing 50% glycerol, and 0.02% sodium azide.

## Storage

Store at -20 °C for one year.

## Recommended Dilutions

Western blotting (WB): 1:500-1:2,500

Flow Cytometry (FCM): 1:1,000

Immunocytochemistry (IC): 1:100-1:1,000

**Note:** This product is for research use only.

## Validation Data

---

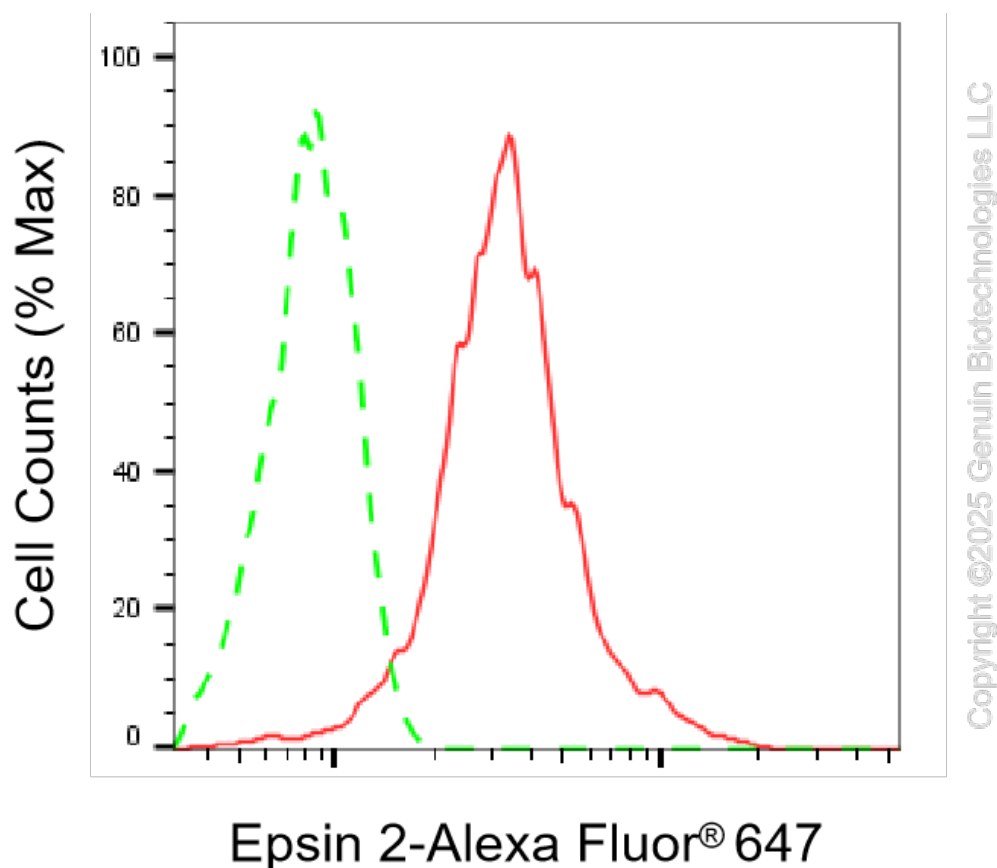
### SUPPORT

SUPPORT@GENUINBIOTECH.COM  
TEL: +1-540-855-7041

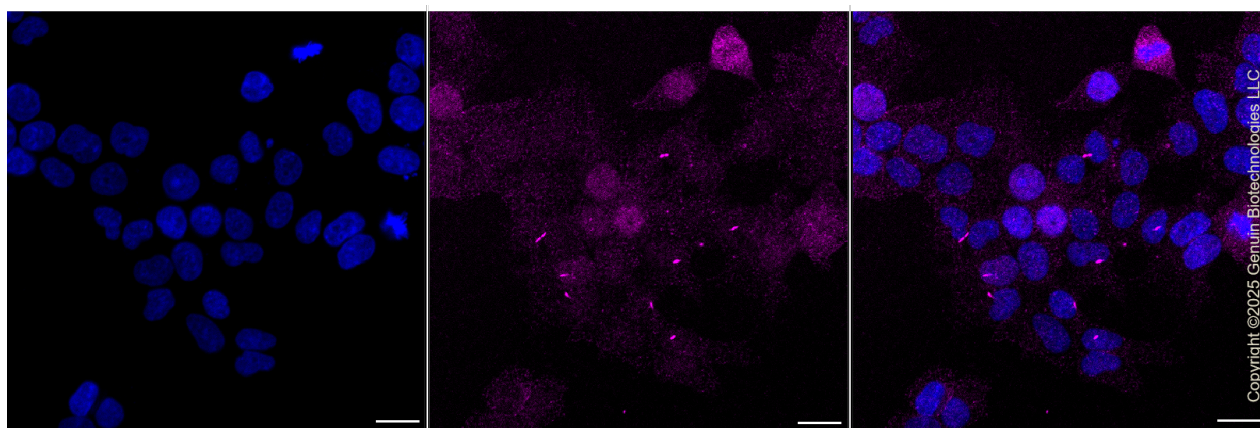
### ORDERS

SALES@GENUINBIOTECH.COM  
FAX: +1-540-855-7041

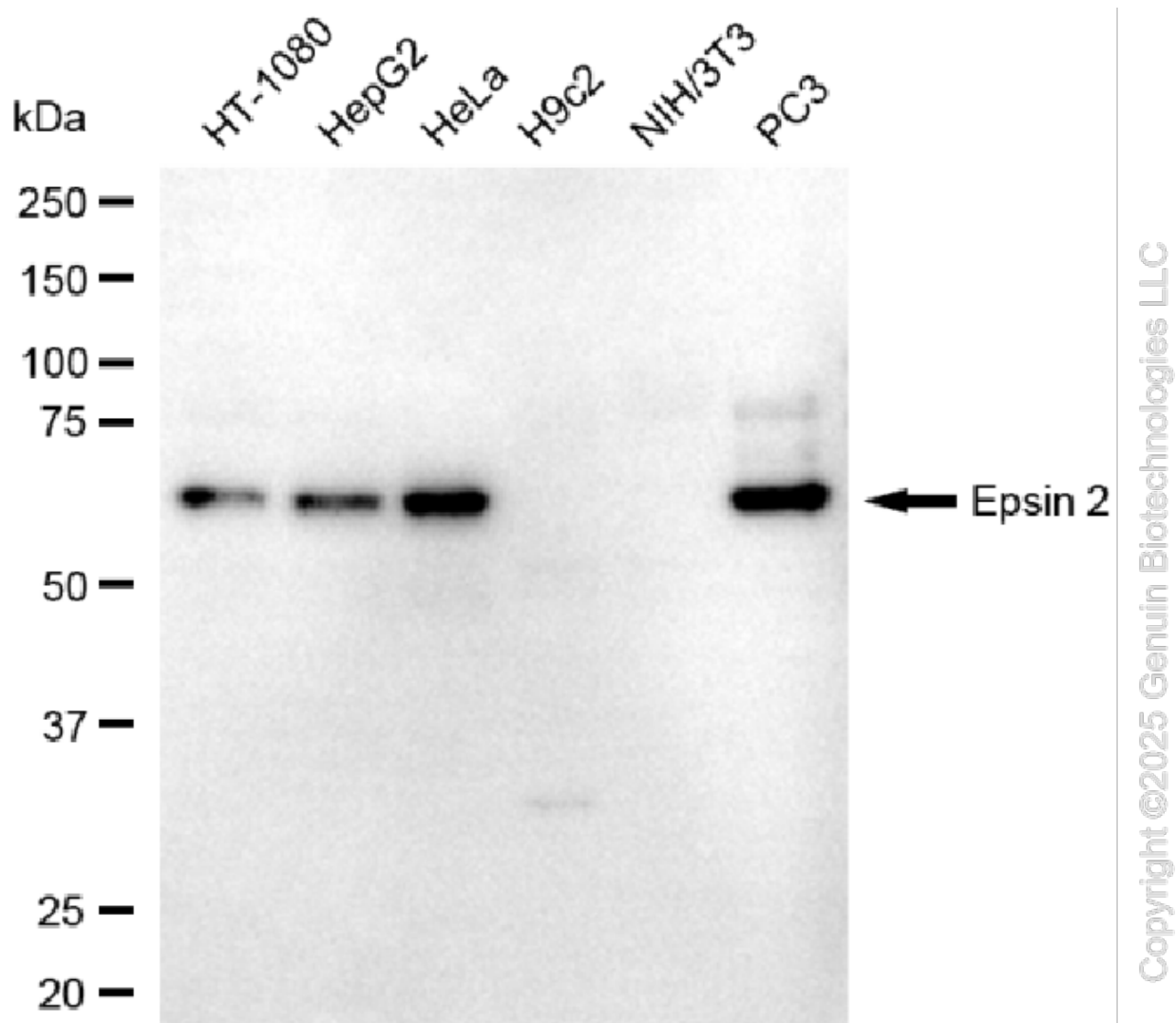
[WWW.GENUINBIOTECH.COM](http://WWW.GENUINBIOTECH.COM)



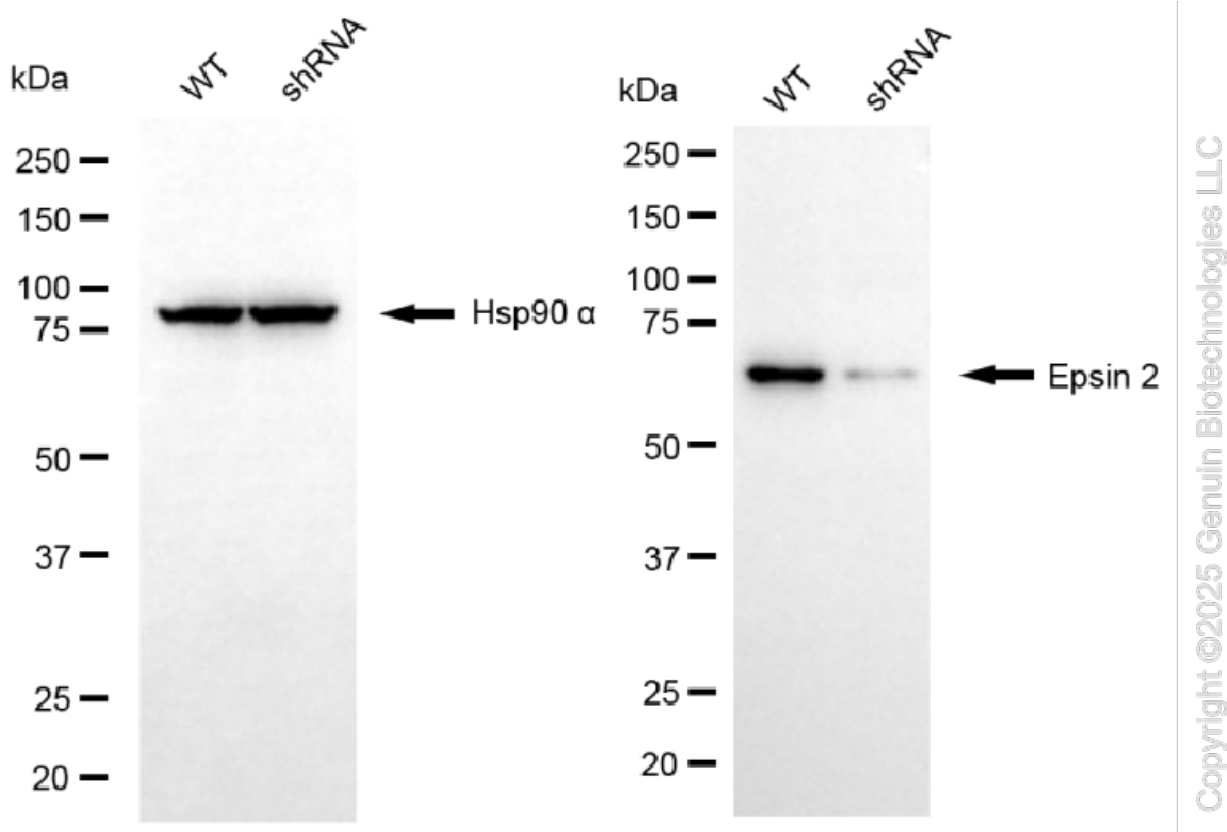
Flow cytometric analysis of Epsin 2 expression in HeLa cells using anti-Epsin 2 antibody (Cat#61860, 1:1,000). Green, isotype control; red, Epsin 2.



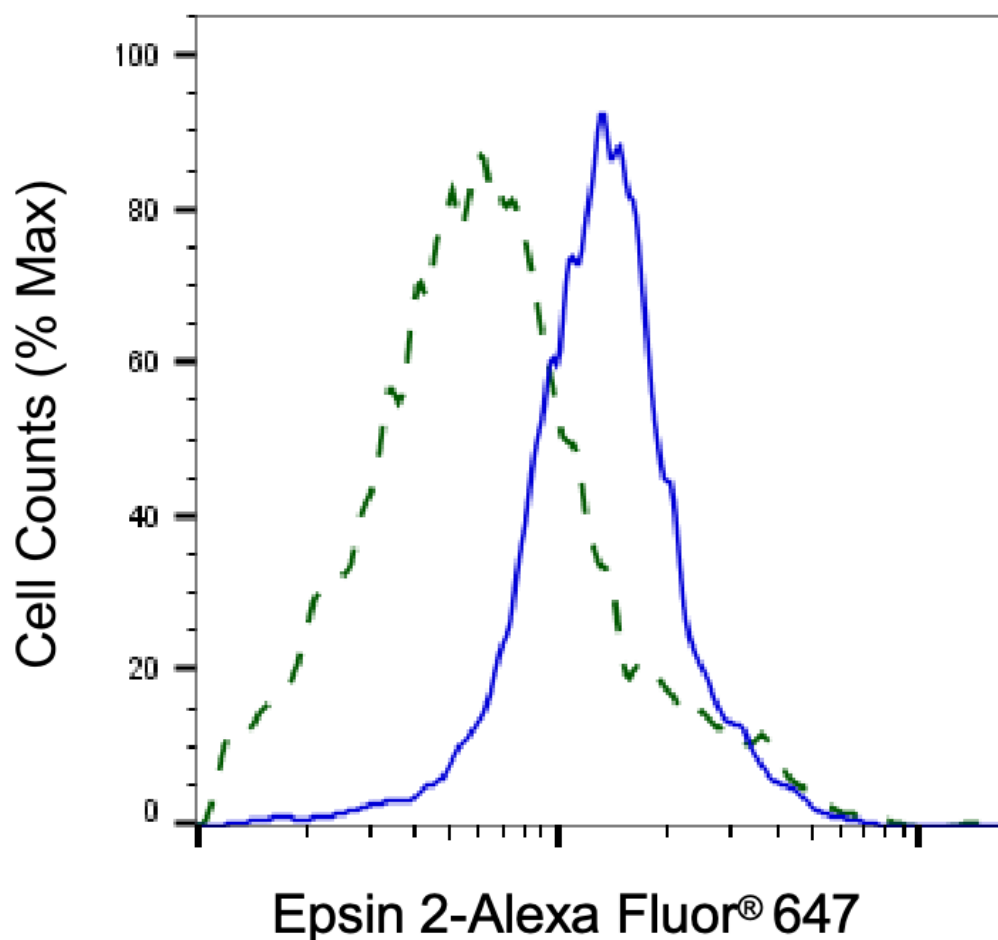
Immunocytochemical staining of HeLa cells with anti-Epsin 2 antibody (Cat#61860, 1:1,000). Nuclei were stained blue with DAPI; Epsin 2 was stained magenta with Alexa Fluor® 647. Images were taken using Leica stellaris 5. Protein abundance based on laser Intensity and smart gain: Low. Scale bar, 20  $\mu$ m.



Western blotting analysis using anti-epsin 2 antibody (Cat#61860). Total cell lysates (30 µg) from various cell lines were loaded and separated by SDS-PAGE. The blot was incubated with anti-epsin 2 antibody (Cat#61860, 1:2,500) and HRP-conjugated goat anti-mouse secondary antibody (Cat#101, 1:20,000) respectively. Image was developed using FeQ™ ECL Substrate Kit (Cat#226).



Western blotting analysis using anti-epsin 2 antibody (Cat#61860). Epsin 2 expression in wild type (WT) and epsin 2 (EPN2) shRNA knockdown (KD) HeLa cells with 20 µg of total cell lysates. Hsp90 α serves as a loading control. The blot was incubated with anti-epsin 2 antibody (Cat#61860, 1:2,500) and HRP-conjugated goat anti-mouse secondary antibody (Cat#101, 1:20,000) respectively. Image was developed using NaQ™ ECL Substrate Kit (Cat#716).



Copyright ©2025 Genuin Biotechnologies LLC

Validation of Epsin 2 knockdown using flow cytometry. Wild-type(WT, Blue) and knockdown(KD, Green) HeLa cells were stained with anti-Epsin 2 antibody (Cat#61860, 1:2,000) and analyzed using BD flow cytometer.