

KD-Validated Anti-Phospho-PBK/TOPK (Thr9) Recombinant Rabbit Monoclonal Antibody



Catalog #: 61861

Aliases

PBK; PDZ Binding Kinase; TOPK; CT84; SPK; T-LAK Cell-Originated Protein Kinase; Cancer/ Testis Antigen 84; Nori-3; Lymphokine-Activated Killer T-Cell-Originated Protein Kinase; Spermatogenesis-Related Protein Kinase; MAPKK-Like Protein Kinase; FLJ14385; Serine/ Threonine Protein Kinase; Epididymis Luminal Protein 164; PDZ-Binding Kinase; EC 2.7.12.2; HEL164; NORI-3

Background

Gene Name: PBK

NCBI Gene Entry: [55872](#)

UniProt Entry: [Q96KB5](#)

Application Information

Molecular Weight: Predicted, 36 kDa, observed, 40 kDa

Clonality: Rabbit monoclonal antibody

Clone ID: 23GB4910

Species Reactivity: Human

Applications Tested: Western blotting (WB), flow cytometry (FCM), immunocytochemistry (IC)

Immunogen

A synthesized peptide derived from human Phospho-PBK/TOPK (Thr9)

Isotype

Rabbit IgG

Storage Buffer

Supplied in PBS (pH 7.4) containing 50% glycerol, and 0.02% sodium azide.

Storage

Store at -20 °C for one year.

Recommended Dilutions

Western Blotting (WB): 1:1,000-1:5,000

Flow Cytometry (FCM): 1:2,000

Immunocytochemistry (IC): 1:100-1:1,000

SUPPORT

SUPPORT@GENUINBIOTECH.COM
TEL: +1-540-855-7041

ORDERS

SALES@GENUINBIOTECH.COM
FAX: +1-540-855-7041

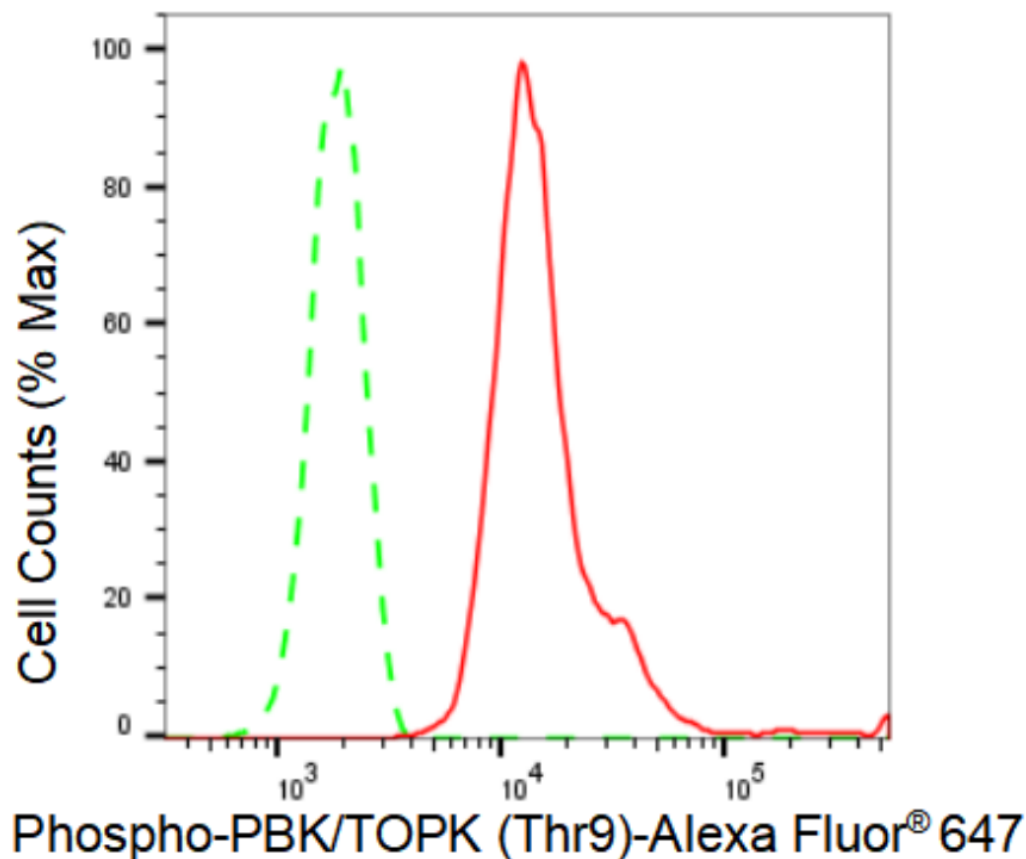
WWW.GENUINBIOTECH.COM

KD-Validated Anti-Phospho-PBK/TOPK (Thr9) Recombinant Rabbit Monoclonal Antibody

PAGE 2

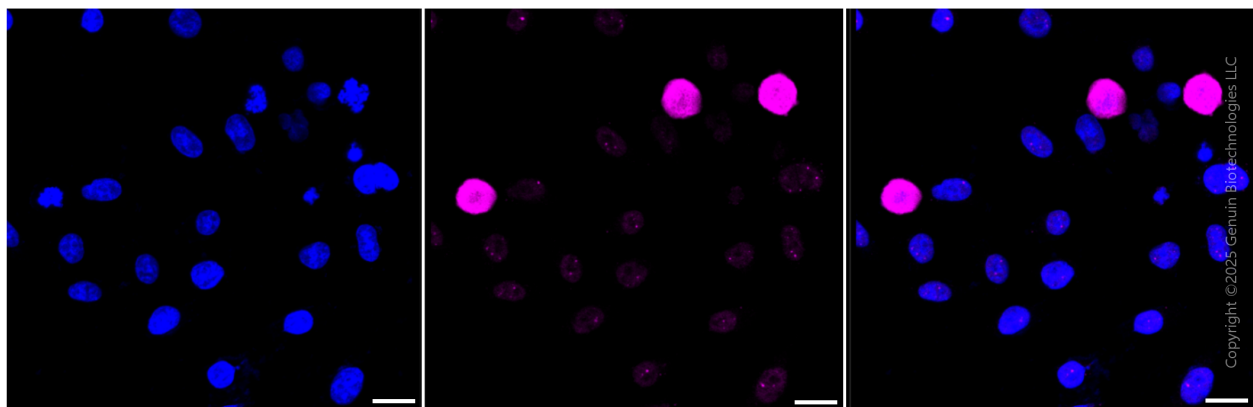
Note: This product is for research use only.

Validation Data



Copyright ©2024 Genuin Biotechnologies LLC

Flow cytometric analysis of Phospho-PBK/TOPK (Thr9) expression in HepG2 cells using Phospho-PBK/TOPK (Thr9) antibody (Cat#61861, 1:2,000). Green, isotype control; red, Phospho-PBK/TOPK (Thr9).



Immunocytochemical staining of HeLa cells with anti-Phospho-PBK/TOPK (Thr9) antibody (Cat#61861, 1:1,000). Nuclei were stained blue with DAPI; Phospho-PBK/TOPK (Thr9) was stained magenta with Alexa Fluor® 647. Images were taken using Leica stellaris 5. Protein

SUPPORT

SUPPORT@GENUINBIOTECH.COM
TEL: +1-540-855-7041

ORDERS

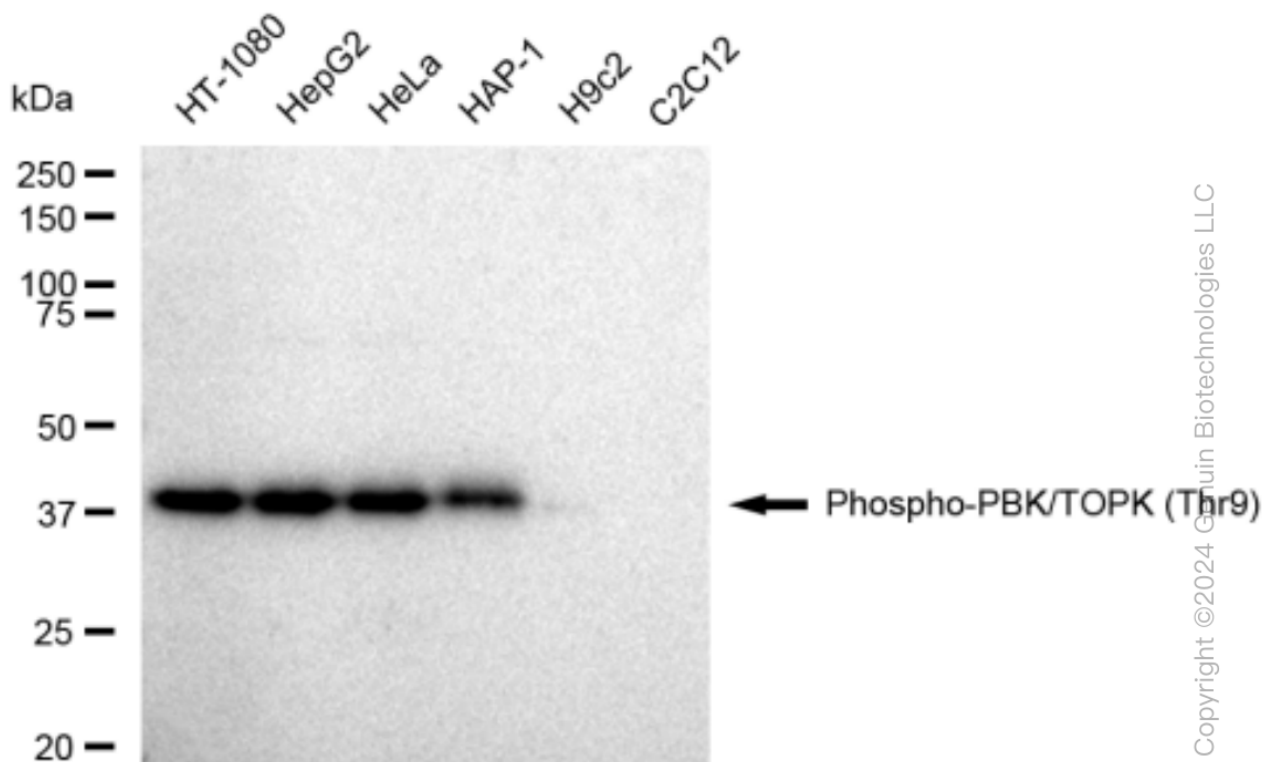
SALES@GENUINBIOTECH.COM
FAX: +1-540-855-7041

WWW.GENUINBIOTECH.COM

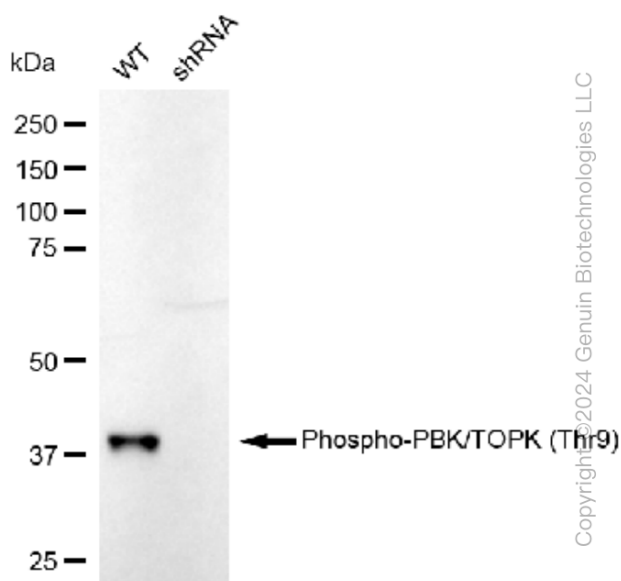
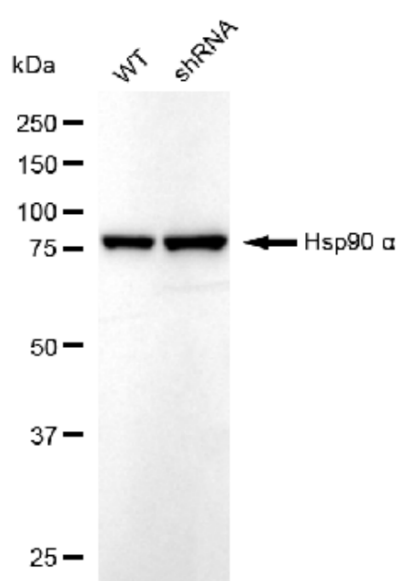
KD-Validated Anti-Phospho-PBK/TOPK (Thr9) Recombinant Rabbit Monoclonal Antibody

PAGE 3

abundance based on laser Intensity and smart gain: High. Scale bar: 20 μ m.



Western blotting analysis using anti-Phospho-PBK/TOPK (Thr9) antibody (Cat#61861). Total cell lysates (30 μ g) from various cell lines were loaded and separated by SDS-PAGE. The blot was incubated with anti-Phospho-PBK/TOPK (Thr9) antibody (Cat#61861, 1:5,000) and HRP-conjugated goat anti-rabbit secondary antibody (Cat#201, 1:20,000) respectively. Image was developed using FeQ™ ECL Substrate Kit (Cat#226).



SUPPORT

SUPPORT@GENUINBIOTECH.COM
TEL: +1-540-855-7041

ORDERS

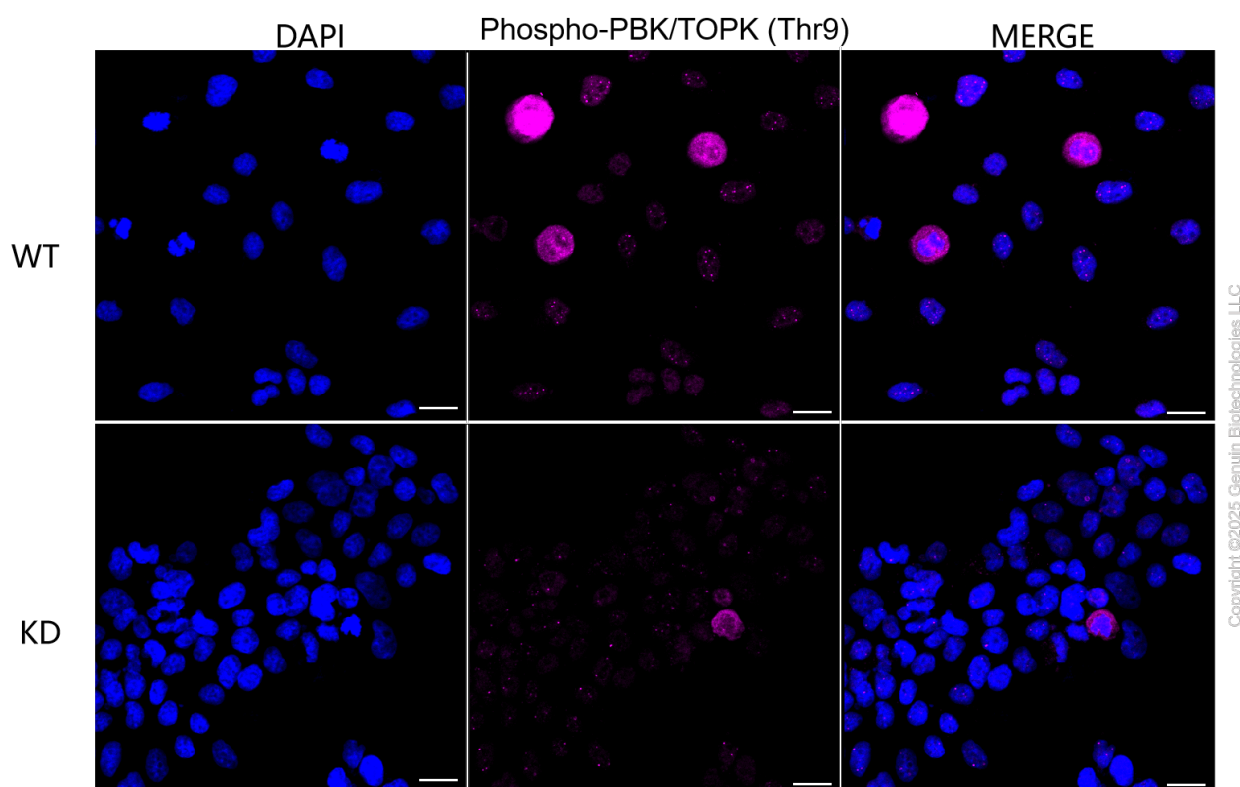
SALES@GENUINBIOTECH.COM
FAX: +1-540-855-7041

WWW.GENUINBIOTECH.COM

KD-Validated Anti-Phospho-PBK/TOPK (Thr9) Recombinant Rabbit Monoclonal Antibody

PAGE 4

Western blotting analysis using anti-Phospho-PBK/TOPK (Thr9) antibody (Cat#61861). Phospho-PBK/TOPK (Thr9) expression in wild type (WT) and Phospho-PBK/TOPK (Thr9) shRNA knockdown (KD) HeLa cells with 30 µg of total cell lysates. Hsp90 α serves as a loading control. The blot was incubated with anti-Phospho-PBK/TOPK (Thr9) antibody (Cat#61861, 1:5,000) and HRP-conjugated goat anti-rabbit secondary antibody (Cat#201, 1:20,000) respectively. Image was developed using FeQ™ ECL Substrate Kit (Cat#226).



Immunocytochemical staining of HeLa cells using anti-Phospho-PBK/TOPK (Thr9) antibody (Cat#61861, 1:1,000), Top panel: wild-type (WT); Bottom panel: Phospho-PBK/TOPK (Thr9) shRNA knockdown (KD). Nuclei were stained blue with DAPI; Phospho-PBK/TOPK (Thr9) was stained magenta with Alexa Fluor® 647. Scale bar, 20 µm. Permeabilization: Triton.

SUPPORT

SUPPORT@GENUINBIOTECH.COM
TEL: +1-540-855-7041

ORDERS

SALES@GENUINBIOTECH.COM
FAX: +1-540-855-7041

WWW.GENUINBIOTECH.COM