

# KD-Validated Anti-DEF6 Mouse Monoclonal Antibody



**Catalog #: 61863**

## Aliases

DEF6; DEF6 Guanine Nucleotide Exchange Factor; IBP; SWAP70L; SLAT; Differentially Expressed In FDCP 6 Homolog; SWAP-70-Like Adaptor Protein Of T Cells; IRF4-Binding Protein; DEF-6; Differentially Expressed In FDCP (Mouse Homolog) 6; Differentially Expressed In FDCP 6 Homolog (Mouse); IMD87

## Background

Gene Name: DEF6

NCBI Gene Entry: [50619](#)

UniProt Entry: [Q9H4E7](#)

## Application Information

Molecular Weight: Predicted, 74 kDa; observed, 74 kDa

Clonality: Mouse monoclonal antibody

Clone ID: 25GB4000

Species Reactivity: Human, rat

Applications Tested: Western blotting (WB)

## Immunogen

Recombinant protein of human DEF6

## Isotype

Mouse IgG1

## Storage Buffer

Supplied in PBS (pH 7.4) containing 50% glycerol, and 0.02% sodium azide.

## Storage

Store at -20 °C for one year.

## Recommended Dilutions

Western Blotting (WB): 1:500-1:2,500

**Note:** This product is for research use only.

## Validation Data

---

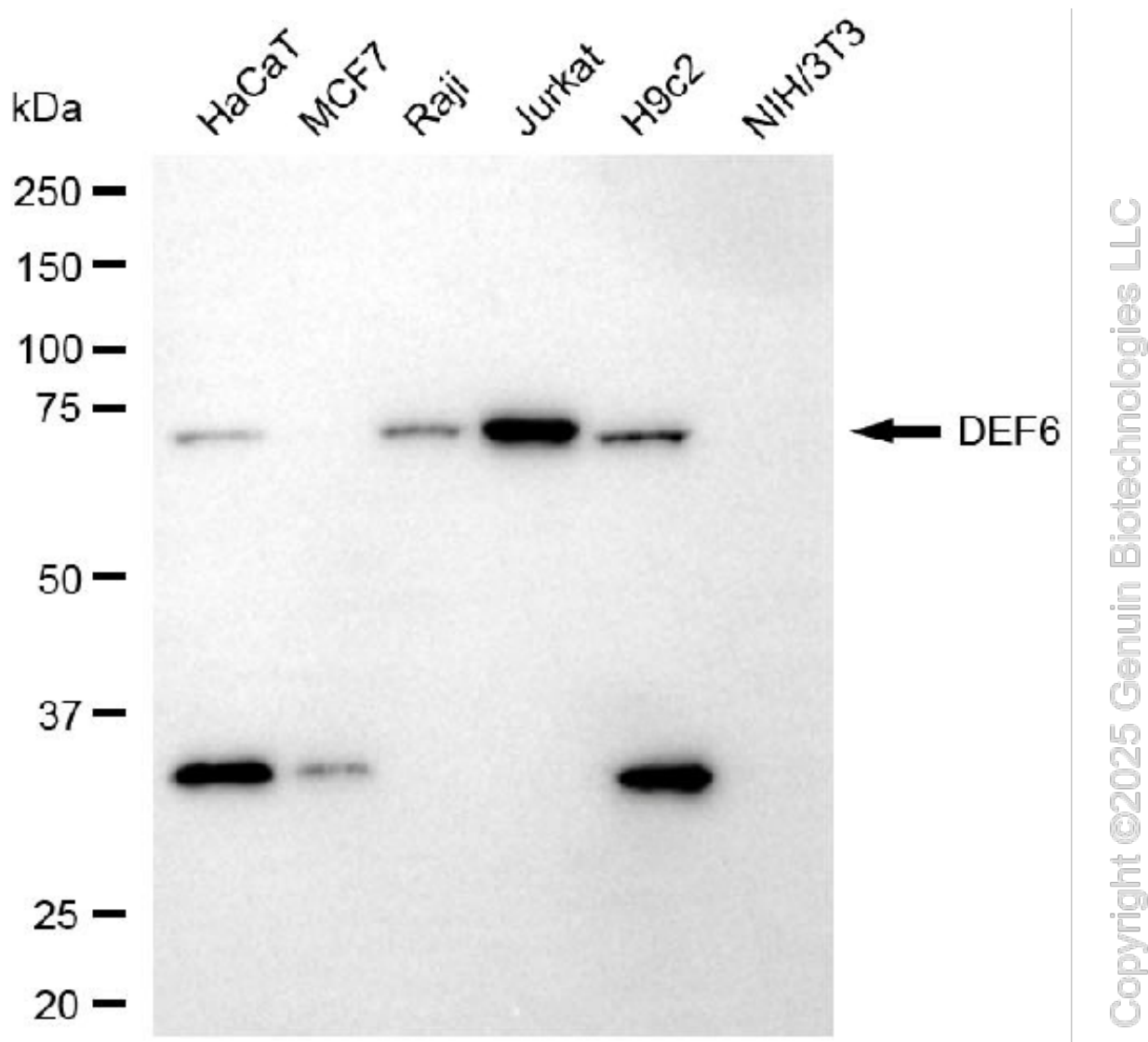
### SUPPORT

SUPPORT@GENUINBIOTECH.COM  
TEL: +1-540-855-7041

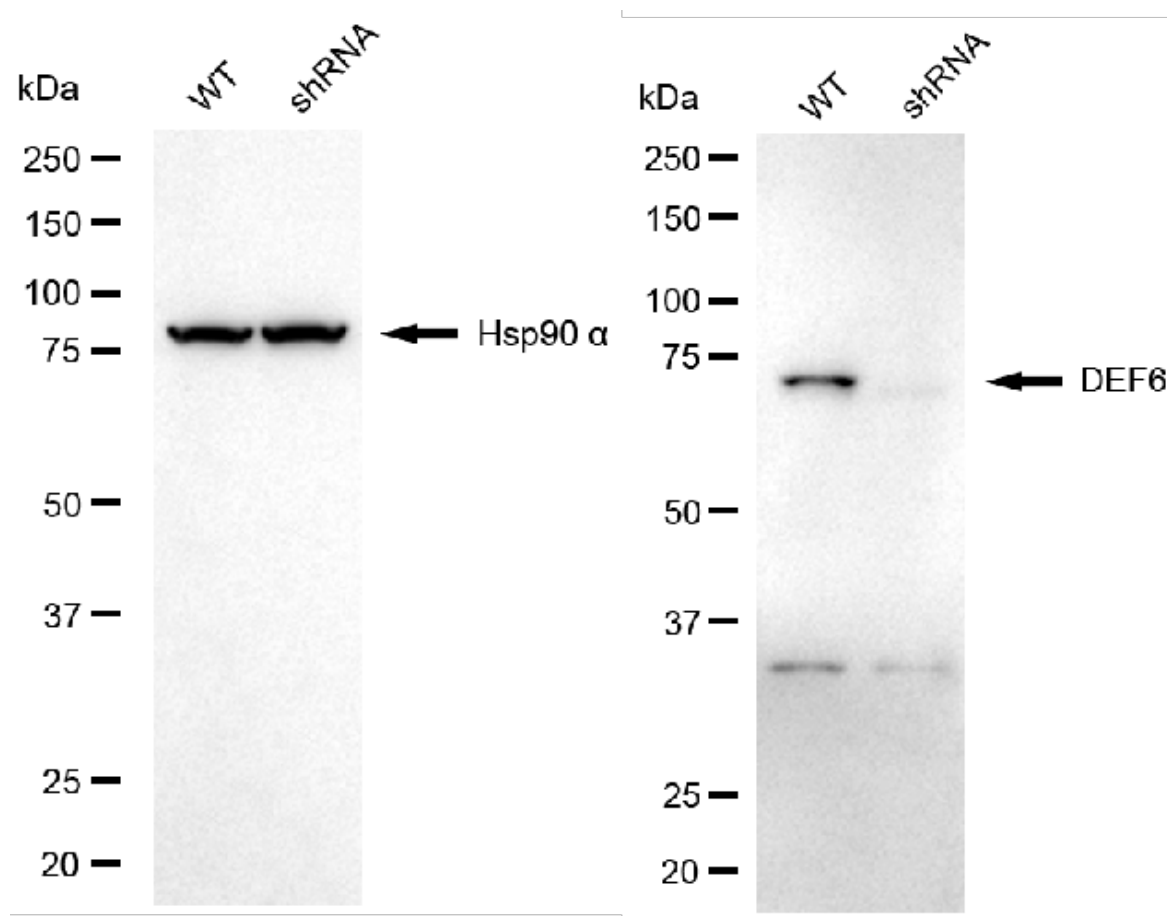
### ORDERS

SALES@GENUINBIOTECH.COM  
FAX: +1-540-855-7041

[WWW.GENUINBIOTECH.COM](http://WWW.GENUINBIOTECH.COM)



Western blotting analysis using anti-DEF6 antibody (Cat#61863). Total cell lysates (30 µg) from various cell lines were loaded and separated by SDS-PAGE. The blot was incubated with anti-DEF6 antibody (Cat#61863, 1:2,500) and HRP-conjugated goat anti-mouse secondary antibody (Cat#101, 1:20,000) respectively. Image was developed using FeQ™ ECL Substrate Kit (Cat#226).



Copyright ©2025 Genuin Biotechnologies LLC

Western blotting analysis using anti-DEF6 antibody (Cat#61863). DEF6 expression in wild type (WT) and DEF6 shRNA knockdown (KD) HeLa cells with 20 µg of total cell lysates. Hsp90 α serves as a loading control. The blot was incubated with anti-DEF6 antibody (Cat#61863, 1:2,500) and HRP-conjugated goat anti-mouse secondary antibody (Cat#101, 1:20,000) respectively. Image was developed using FeQ™ ECL Substrate Kit (Cat#226).