

Catalog #: 61868

Aliases

CYP7B1; Cytochrome P450 Family 7 Subfamily B Member 1; Cytochrome P450, Subfamily VIIIB (Oxysterol 7 Alpha-Hydroxylase), Polypeptide 1; 25/26-Hydroxycholesterol 7-Alpha-Hydroxylase; 24-Hydroxycholesterol 7-Alpha-Hydroxylase; 3-Hydroxysteroid 7-Alpha-Hydroxylase; Oxysterol 7-Alpha-Hydroxylase; Cytochrome P450 7B1; SPG5A; Cytochrome P450, Family 7, Subfamily B, Polypeptide 1; Spastic Paraplegia 5A (Autosomal Recessive); 25-Hydroxycholesterol 7-Alpha-Hydroxylase; EC 1.14.14.26; EC 1.14.14.29; CBAS3; CP7B

Background

Gene Name: CYP7B1

NCBI Gene Entry: [9420](#)

UniProt Entry: [O75881](#)

Application Information

Molecular Weight: Predicted, 58 kDa; observed, 58 kDa

Clonality: Mouse monoclonal antibody

Clone ID: 225GB4020

Species Reactivity: Human, mouse, rat

Applications Tested: Western blotting (WB), flow cytometry (FCM), immunocytochemistry (IC)

Immunogen

Recombinant protein of human CYP7B1

Isotype

Mouse IgG1

Storage Buffer

Supplied in PBS (pH 7.4) containing 50% glycerol, and 0.02% sodium azide.

Storage

Store at -20 °C for one year.

Recommended Dilutions

Western Blotting (WB): 1:200-1:1,000

Flow Cytometry (FCM): 1:1,000

Immunocytochemistry (IC): 1:100-1:1,000

SUPPORT

SUPPORT@GENUINBIOTECH.COM
TEL: +1-540-855-7041

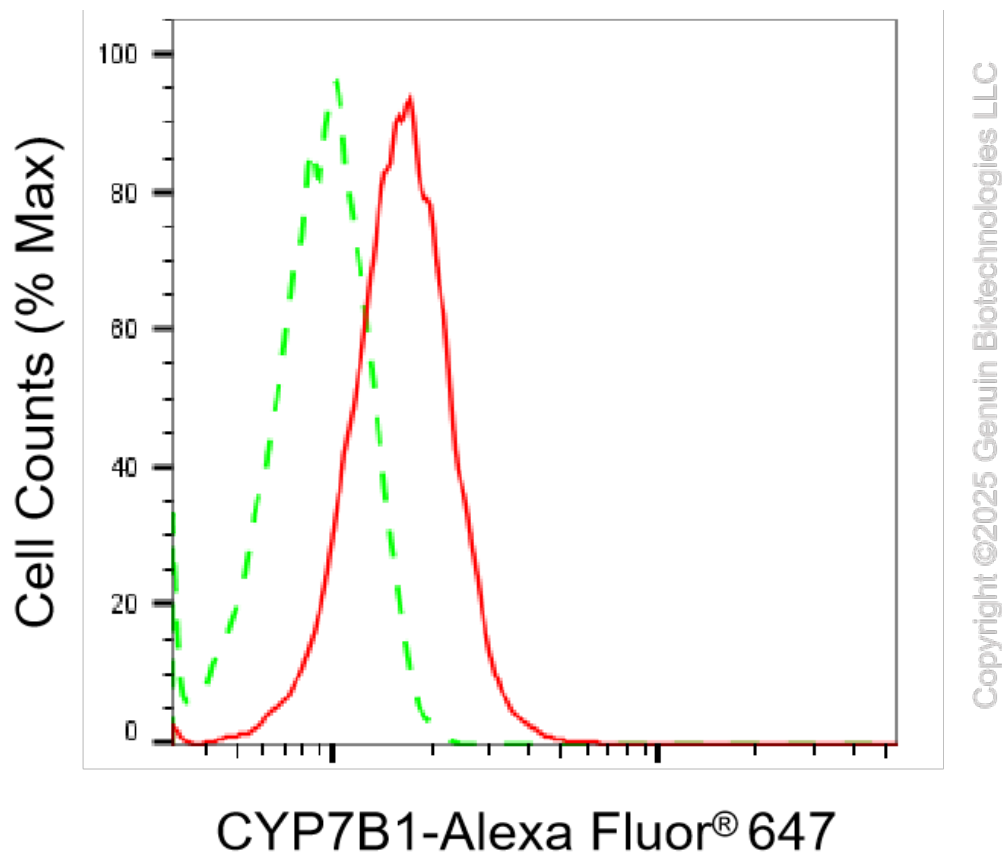
ORDERS

SALES@GENUINBIOTECH.COM
FAX: +1-540-855-7041

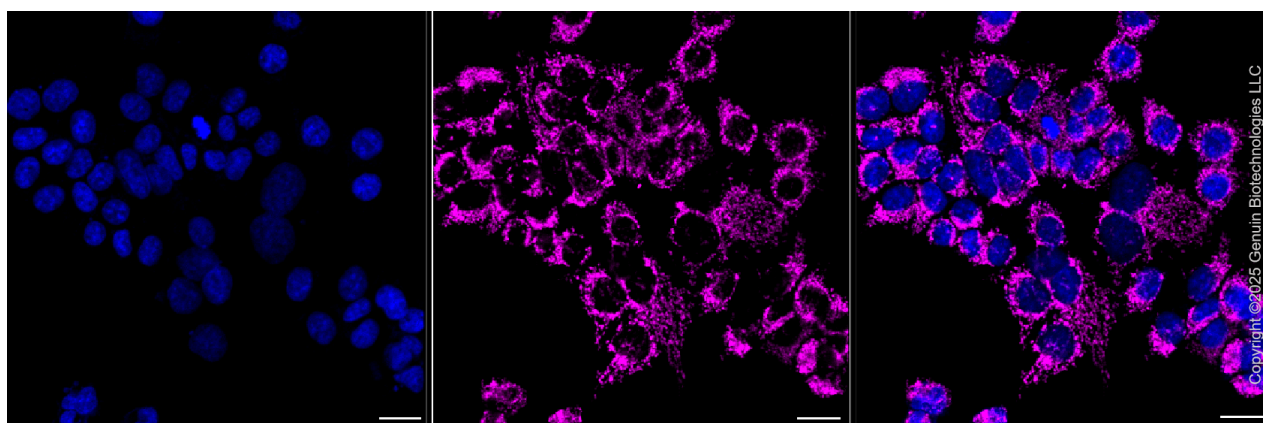
WWW.GENUINBIOTECH.COM

Note: This product is for research use only.

Validation Data



Flow cytometric analysis of CYP7B1 expression in HAP-1 cells using anti-CYP7B1 antibody (Cat#61868, 1:1,000). Green, isotype control; red, CYP7B1.



Immunocytochemical staining of HAP1 cells with anti-CYP7B1 antibody (Cat#61868, 1:1,000). Nuclei were stained blue with DAPI; CYP7B1 was stained magenta with Alexa Fluor® 647. Images were taken using Leica stellaris 5. Protein abundance based on laser Intensity and smart

SUPPORT

SUPPORT@GENUINBIOTECH.COM
TEL: +1-540-855-7041

ORDERS

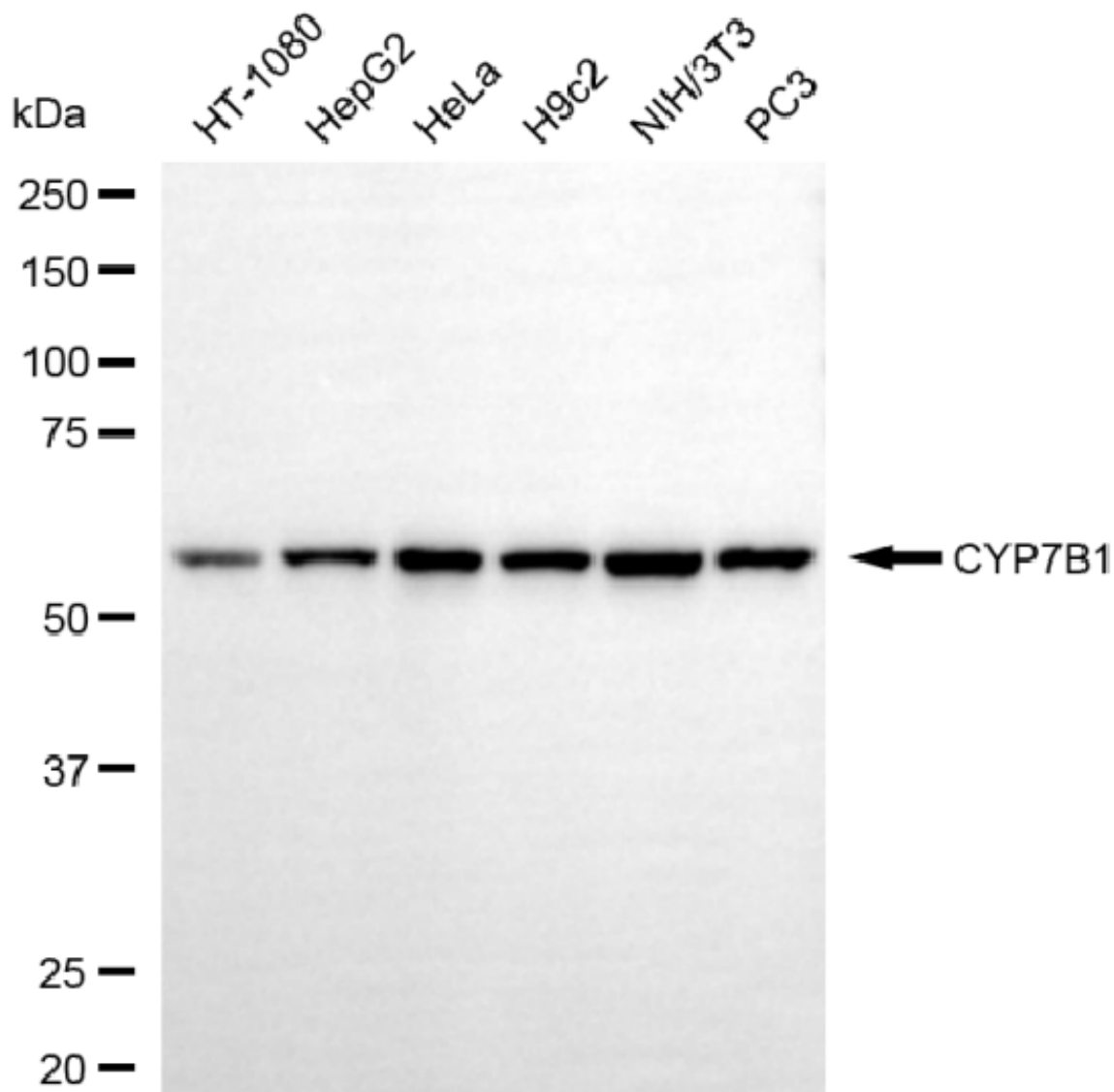
SALES@GENUINBIOTECH.COM
FAX: +1-540-855-7041

WWW.GENUINBIOTECH.COM

KD-Validated Anti-CYP7B1 Mouse Monoclonal Antibody

PAGE 3

gain: Medium. Scale bar, 20 μ m.



Copyright ©2025 Genuin Biotechnologies LLC

Western blotting analysis using anti-CYP7B1 antibody (Cat#61868). Total cell lysates (30 μ g) from various cell lines were loaded and separated by SDS-PAGE. The blot was incubated with anti-CYP7B1 antibody (Cat#61868, 1:1,000) and HRP-conjugated goat anti-mouse secondary antibody (Cat#101, 1:20,000) respectively. Image was developed using NaQ™ ECL Substrate Kit (Cat#716).

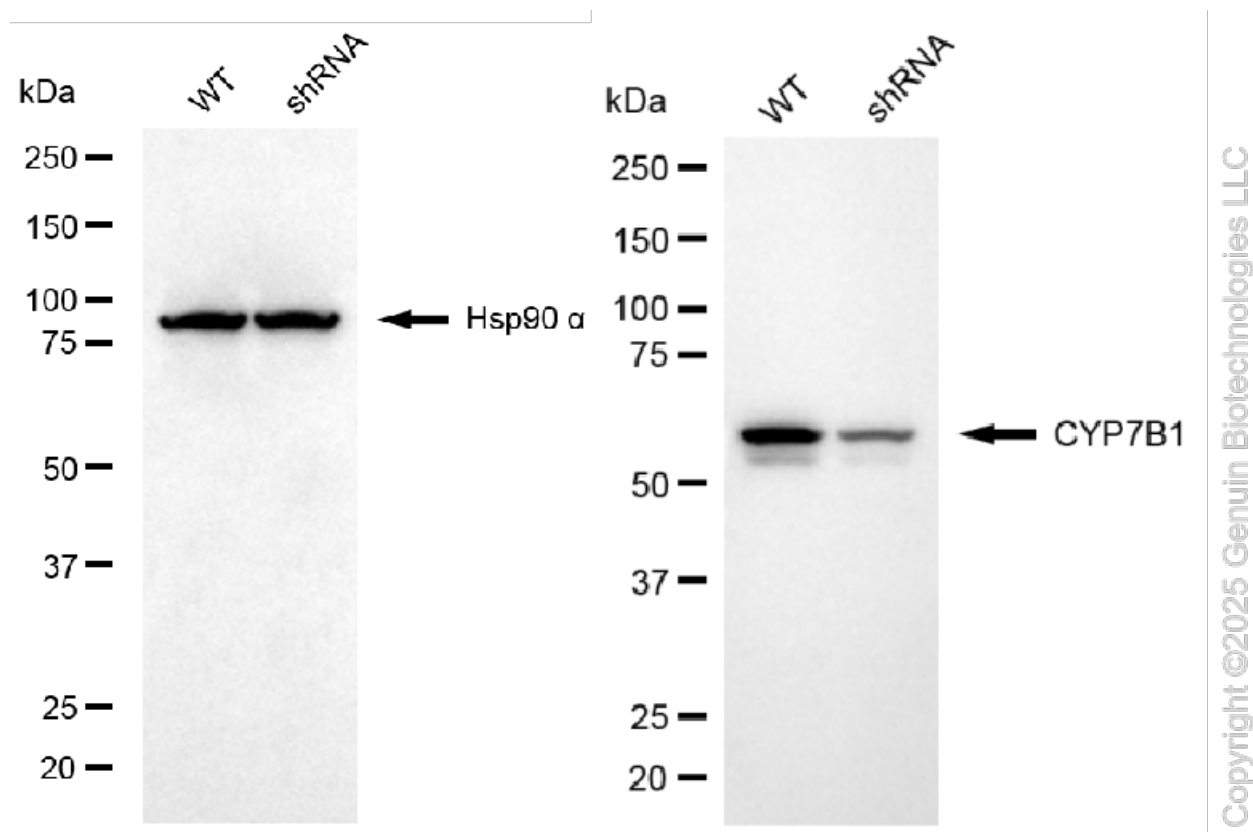
SUPPORT

SUPPORT@GENUINBIOTECH.COM
TEL: +1-540-855-7041

ORDERS

SALES@GENUINBIOTECH.COM
FAX: +1-540-855-7041

WWW.GENUINBIOTECH.COM



Western blotting analysis using anti-CYP7B1 antibody (Cat#61868). CYP7B1 expression in wild type (WT) and CYP7B1 shRNA knockdown (KD) HeLa cells with 20 μ g of total cell lysates. Hsp90 α serves as a loading control. The blot was incubated with anti-CYP7B1 antibody (Cat#61868, 1:1,000) and HRP-conjugated goat anti-mouse secondary antibody (Cat#101, 1:20,000) respectively. Image was developed using NaQTM ECL Substrate Kit (Cat#716).