

KD-Validated Anti-ENOPH1 Mouse Monoclonal Antibody



Catalog #: 61869

Aliases

ENOPH1; Enolase-Phosphatase 1; MASA; Enolase-Phosphatase E1; MtnC; E1; 2,3-Diketo-5-Methylthio-1-Phosphopentane Phosphatase; Acireductone Synthase; EC 3.1.3.77; MASA Homolog; MST145

Background

Gene Name: ENOPH1

NCBI Gene Entry: [58478](#)

UniProt Entry: [Q9UHY7](#)

Application Information

Molecular Weight: Predicted, 29 kDa; observed, 29 kDa

Clonality: Mouse monoclonal antibody

Clone ID: 25GB4025

Species Reactivity: Human, mouse

Applications Tested: Western blotting (WB), flow cytometry (FCM)

Immunogen

Recombinant protein of human ENOPH1

Isotype

Mouse IgG2a

Storage Buffer

Supplied in PBS (pH 7.4) containing 50% glycerol, and 0.02% sodium azide.

Storage

Store at -20 °C for one year.

Recommended Dilutions

Western Blotting (WB): 1:500-1:2,500

Flow Cytometry (FCM): 1:1,000

Note: This product is for research use only.

Validation Data

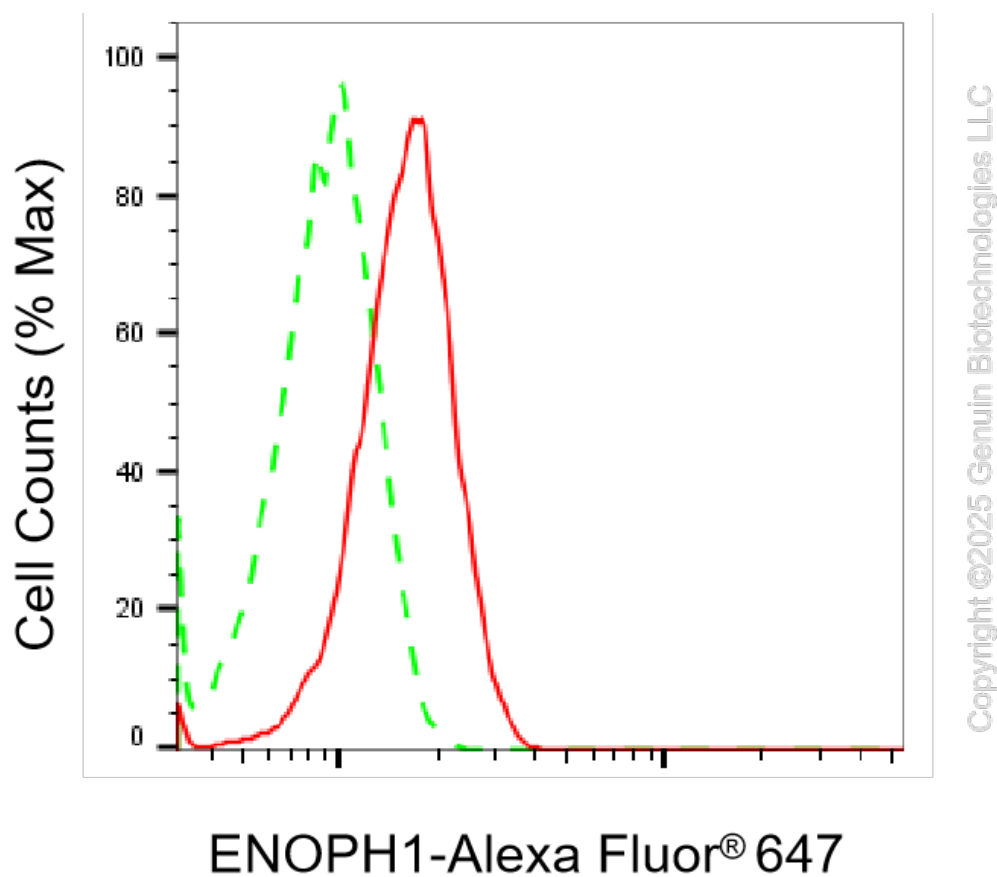
SUPPORT

SUPPORT@GENUINBIOTECH.COM
TEL: +1-540-855-7041

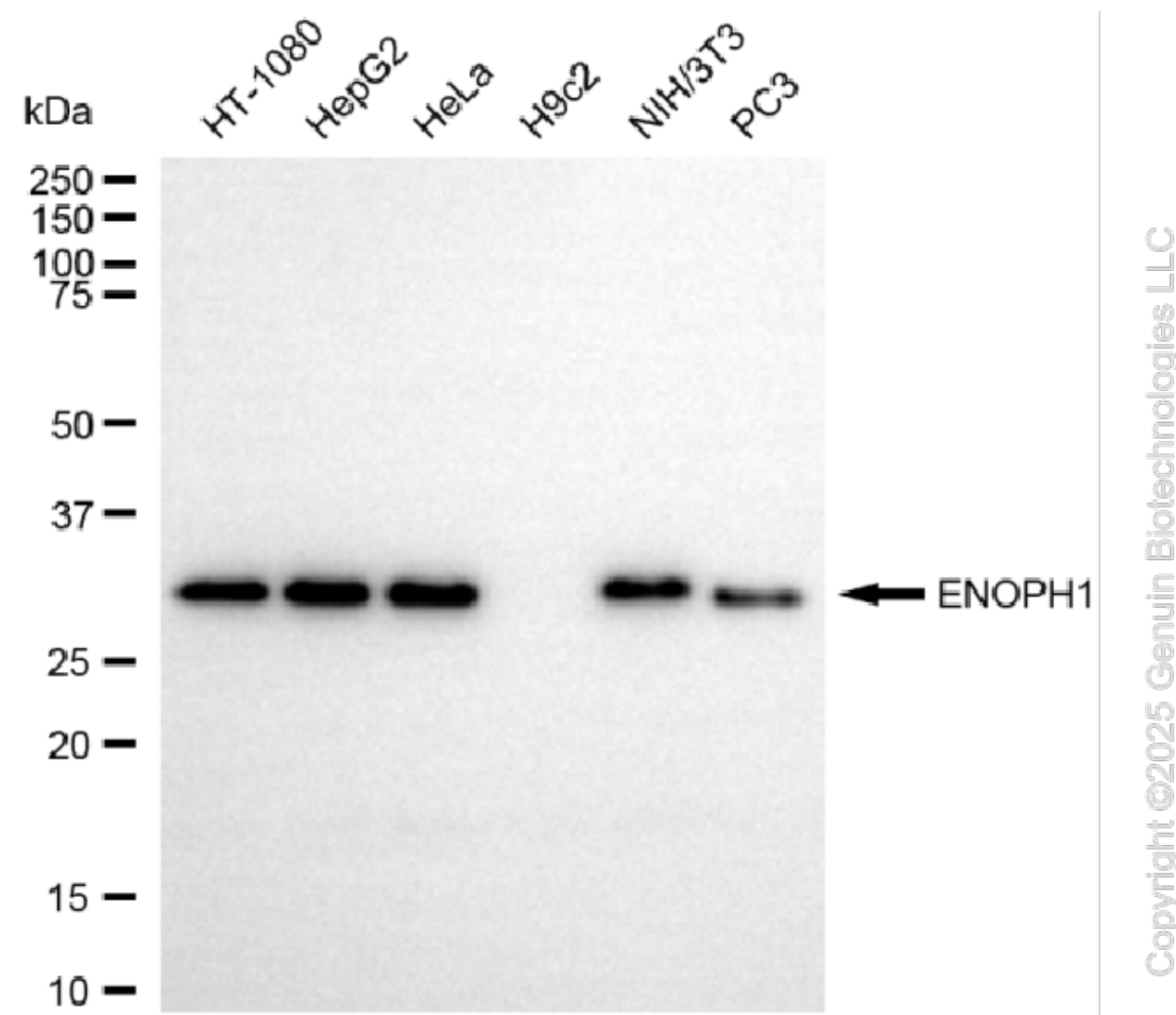
ORDERS

SALES@GENUINBIOTECH.COM
FAX: +1-540-855-7041

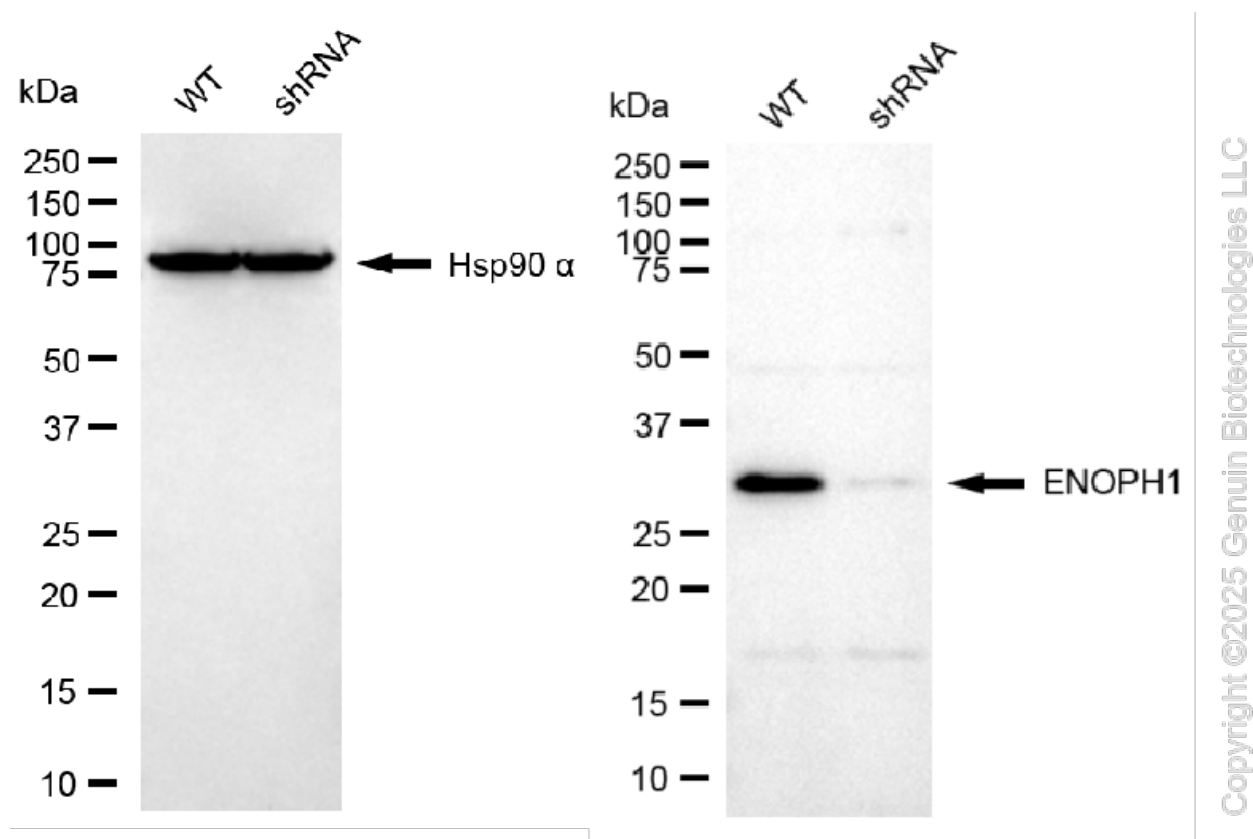
WWW.GENUINBIOTECH.COM



Flow cytometric analysis of ENOPH1 expression in HAP-1 cells using anti-ENOPH1 antibody (Cat#61869, 1:1,000). Green, isotype control; red, ENOPH1.



Western blotting analysis using anti-ENOPH1 antibody (Cat#61869). Total cell lysates (30 μ g) from various cell lines were loaded and separated by SDS-PAGE. The blot was incubated with anti-ENOPH1 antibody (Cat#61869, 1:2,500) and HRP-conjugated goat anti-mouse secondary antibody (Cat#101, 1:20,000) respectively. Image was developed using FeQ™ ECL Substrate Kit (Cat#226).



Western blotting analysis using anti-ENOPH1 antibody (Cat#61869). ENOPH1 expression in wild type (WT) and ENOPH1 shRNA knockdown (KD) HeLa cells with 30 µg of total cell lysates. Hsp90 α serves as a loading control. The blot was incubated with anti-ENOPH1 antibody (Cat#61869, 1:1,000) and HRP-conjugated goat anti-mouse secondary antibody (Cat#101, 1:20,000) respectively. Image was developed using FeQ™ ECL Substrate Kit (Cat#226).