

KD-Validated Anti-EFHD1 Mouse Monoclonal Antibody



Catalog #: 61870

Aliases

EFHD1; EF-Hand Domain Family Member D1; Swiprosin-2; EF-Hand Domain-Containing Protein D1; EF-Hand Domain-Containing Protein 1; FLJ13612; SWS2; EF Hand Domain Containing 1; MSTP133; MST133; PP3051

Background

Gene Name: EFHD1

NCBI Gene Entry: [80303](#)

UniProt Entry: [Q9BUP0](#)

Application Information

Molecular Weight: Predicted, 27 kDa; observed, 30 kDa

Clonality: Mouse monoclonal antibody

Clone ID: 25GB4030

Species Reactivity: Human

Applications Tested: Western blotting (WB), flow cytometry (FCM)

Immunogen

Recombinant protein of human EFHD1

Isotype

Mouse IgG1

Storage Buffer

Supplied in PBS (pH 7.4) containing 50% glycerol, and 0.02% sodium azide.

Storage

Store at -20 °C for one year.

Recommended Dilutions

Western Blotting (WB): 1:100-1:500

Flow Cytometry (FCM): 1:1,000

Note: This product is for research use only.

Validation Data

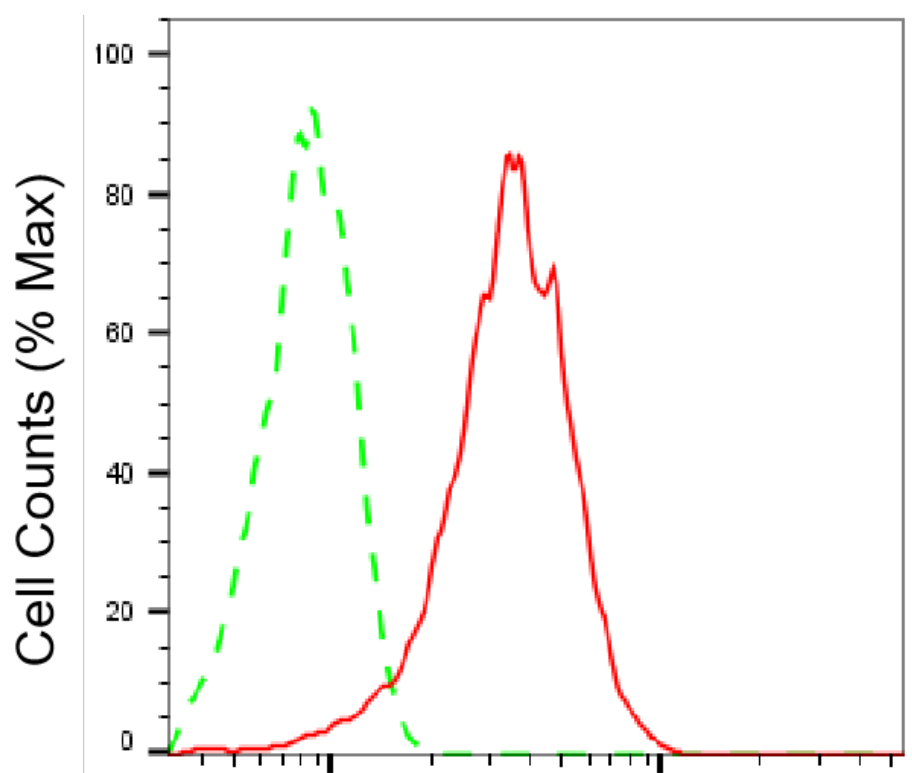
SUPPORT

SUPPORT@GENUINBIOTECH.COM
TEL: +1-540-855-7041

ORDERS

SALES@GENUINBIOTECH.COM
FAX: +1-540-855-7041

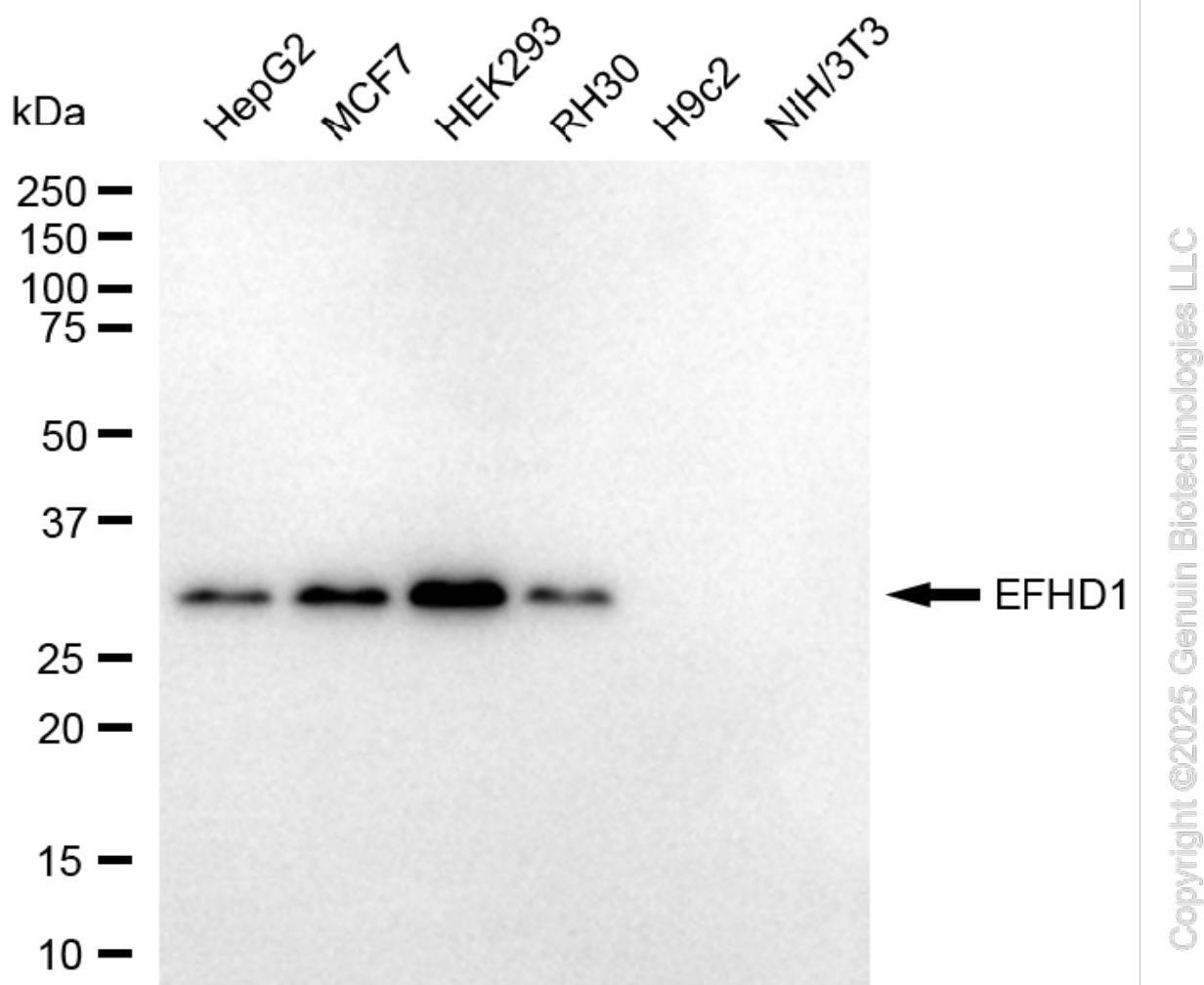
WWW.GENUINBIOTECH.COM



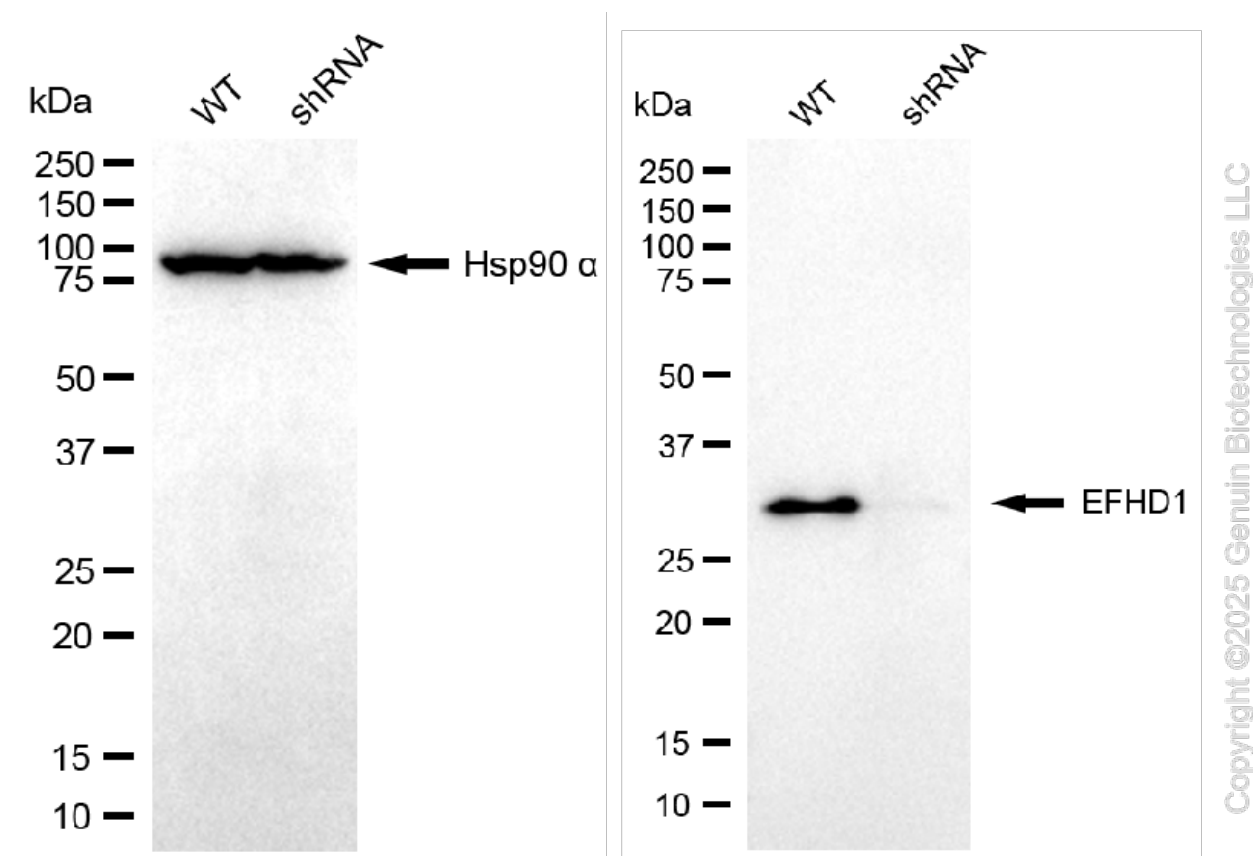
Copyright ©2025 Genuin Biotechnologies LLC

EFHD1-Alexa Fluor® 647

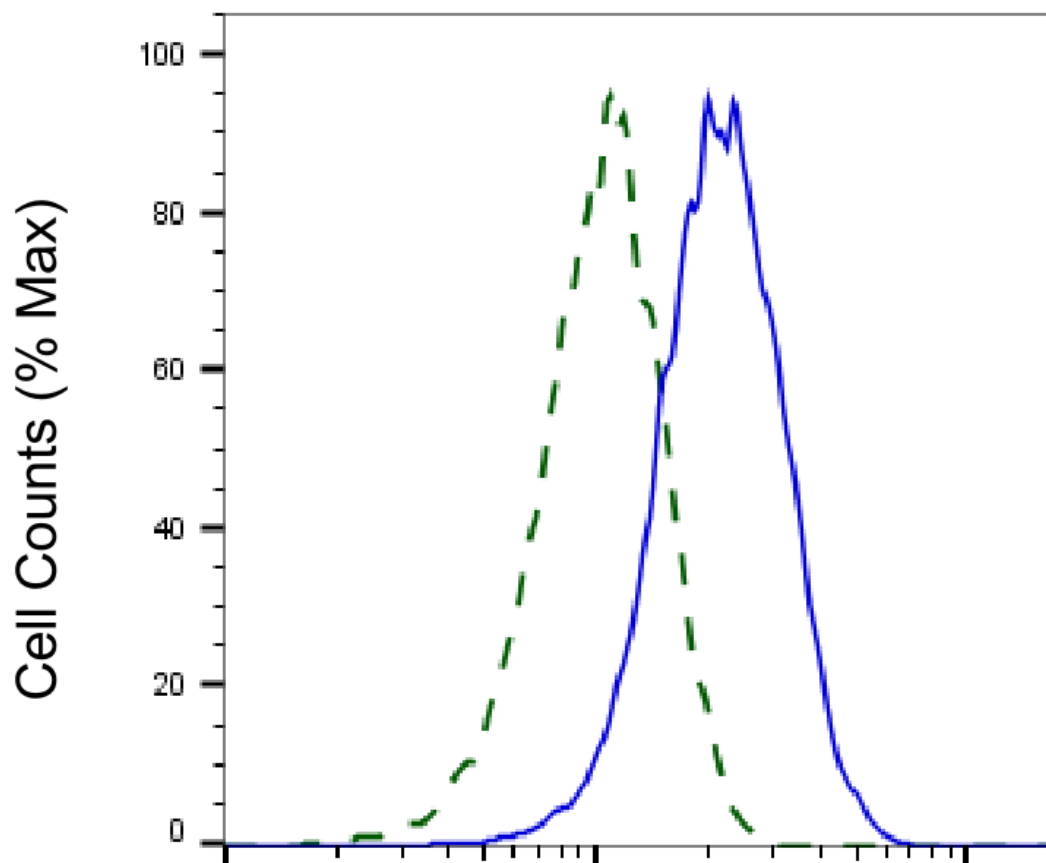
Flow cytometric analysis of EFHD1 expression in HeLa cells using anti-EFHD1 antibody (Cat#61870, 1:1,000). Green, isotype control; red, EFHD1.



Western blotting analysis using anti-EFHD1 antibody (Cat#61870). Total cell lysates (30 μ g) from various cell lines were loaded and separated by SDS-PAGE. The blot was incubated with anti-EFHD1 antibody (Cat#61870, 1:500) and HRP-conjugated goat anti-mouse secondary antibody (Cat#101, 1:20,000) respectively. Image was developed using FeQ™ ECL Substrate Kit (Cat#226).



Western blotting analysis using anti-EFHD1 antibody (Cat#61870). EFHD1 expression in wild-type (WT) and EFHD1 knockdown (KD) HeLa cells with 20 μ g of total cell lysates. Hsp90 α serves as a loading control. The blot was incubated with anti-EFHD1 antibody (Cat#61870, 1:500) and HRP-conjugated goat anti-mouse secondary antibody (Cat#101, 1:20,000) respectively. Image was developed using FeQ™ ECL Substrate Kit (Cat#226).



Copyright ©2025 Genuin Biotechnologies LLC

EFHD1-Alexa Fluor® 647

Validation of EFHD1 knockdown using flow cytometry. Wild-type(WT, Blue) and knockdown(KD, Green) HeLa cells were stained with anti-EFHD1 antibody (Cat#61870, 1:2,000) and analyzed using BD flow cytometer.