

KD-Validated Anti-NFKB inhibitor alpha Recombinant Rabbit Monoclonal Antibody



Catalog #: 61872

Aliases

I-kappa-B-alpha; NFKBI; NFKBIA; NF-kappaB inhibitor alpha; IKBA; IkappaBalpa; MAD3; RL/IF-1

Background

Gene Name: NFKBIA

NCBI Gene Entry: [4792](#)

UniProt Entry: [P25963](#)

Application Information

Molecular Weight: Predicted, 36 kDa; observed, 35 kDa

Clonality: Rabbit monoclonal antibody

Clone ID: 25GB4040

Species Reactivity: Human, mouse, rat

Applications Tested: Western blotting (WB), flow cytometry (FCM), immunocytochemistry (IC)

Immunogen

A synthesized peptide derived from human IKB alpha

Isotype

Rabbit IgG

Storage Buffer

Supplied in PBS (pH 7.4) containing 50% glycerol, and 0.02% sodium azide.

Storage

Store at -20 °C for one year.

Recommended Dilutions

Western Blotting (WB): 1:1,000-1:5,000

Flow Cytometry (FCM): 1:2,000

Immunocytochemistry (IC): 1:100-1:1,000

Note: This product is for research use only.

Validation Data

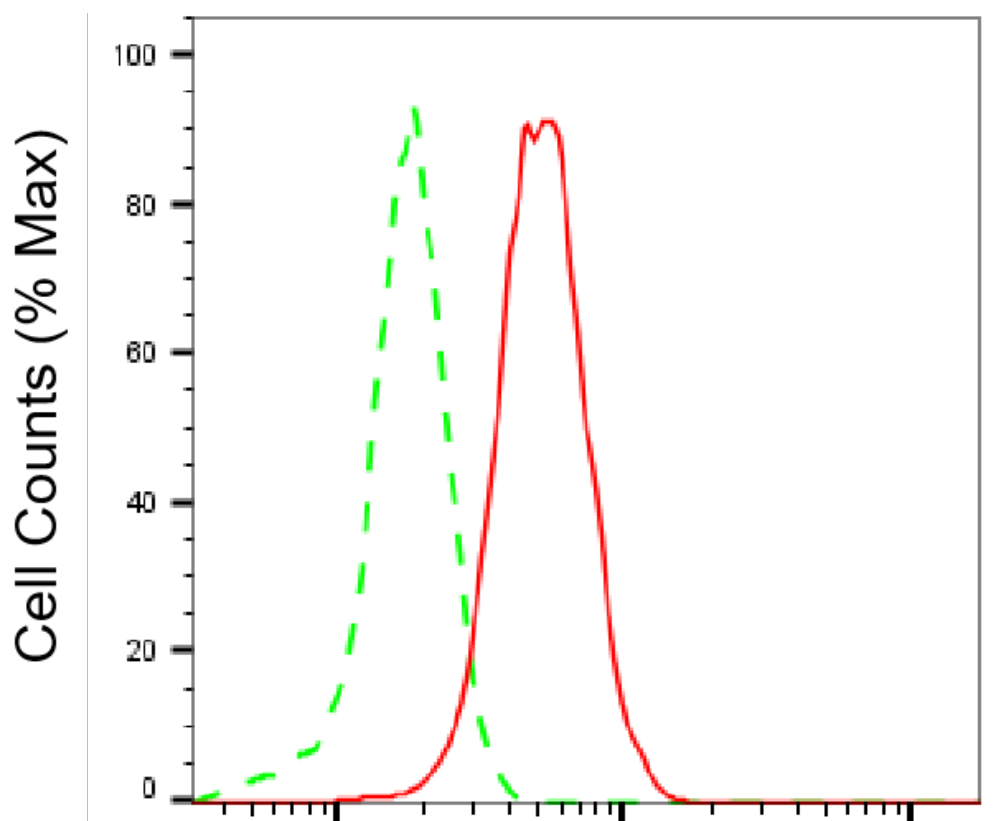
SUPPORT

SUPPORT@GENUINBIOTECH.COM
TEL: +1-540-855-7041

ORDERS

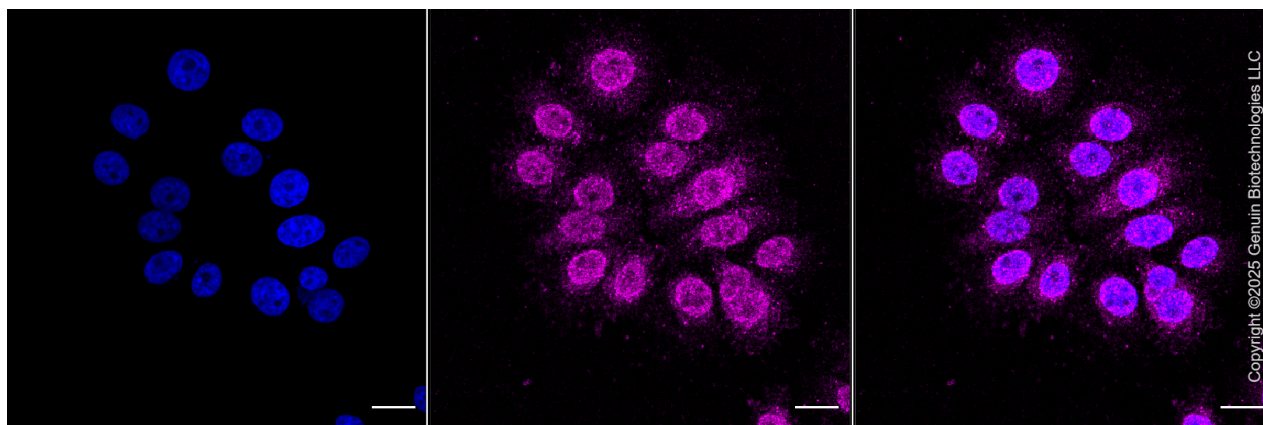
SALES@GENUINBIOTECH.COM
FAX: +1-540-855-7041

WWW.GENUINBIOTECH.COM



NFKB inhibitor alpha-Alexa Fluor® 647

Flow cytometric analysis of NFKB inhibitor alpha expression in HepG2 cells using NFKB inhibitor alpha antibody (Cat#61872, 1:2,000). Green, isotype control; red, NFKB inhibitor alpha.



Immunocytochemical staining of HepG2 cells with anti-NFKB inhibitor alpha antibody (Cat#61872, 1:1,000). Nuclei were stained blue with DAPI; NFKB inhibitor alpha was stained magenta with Alexa Fluor® 647. Images were taken using Leica stellaris 5. Protein abundance based on laser Intensity and smart gain: Low. Scale bar, 20 µm.

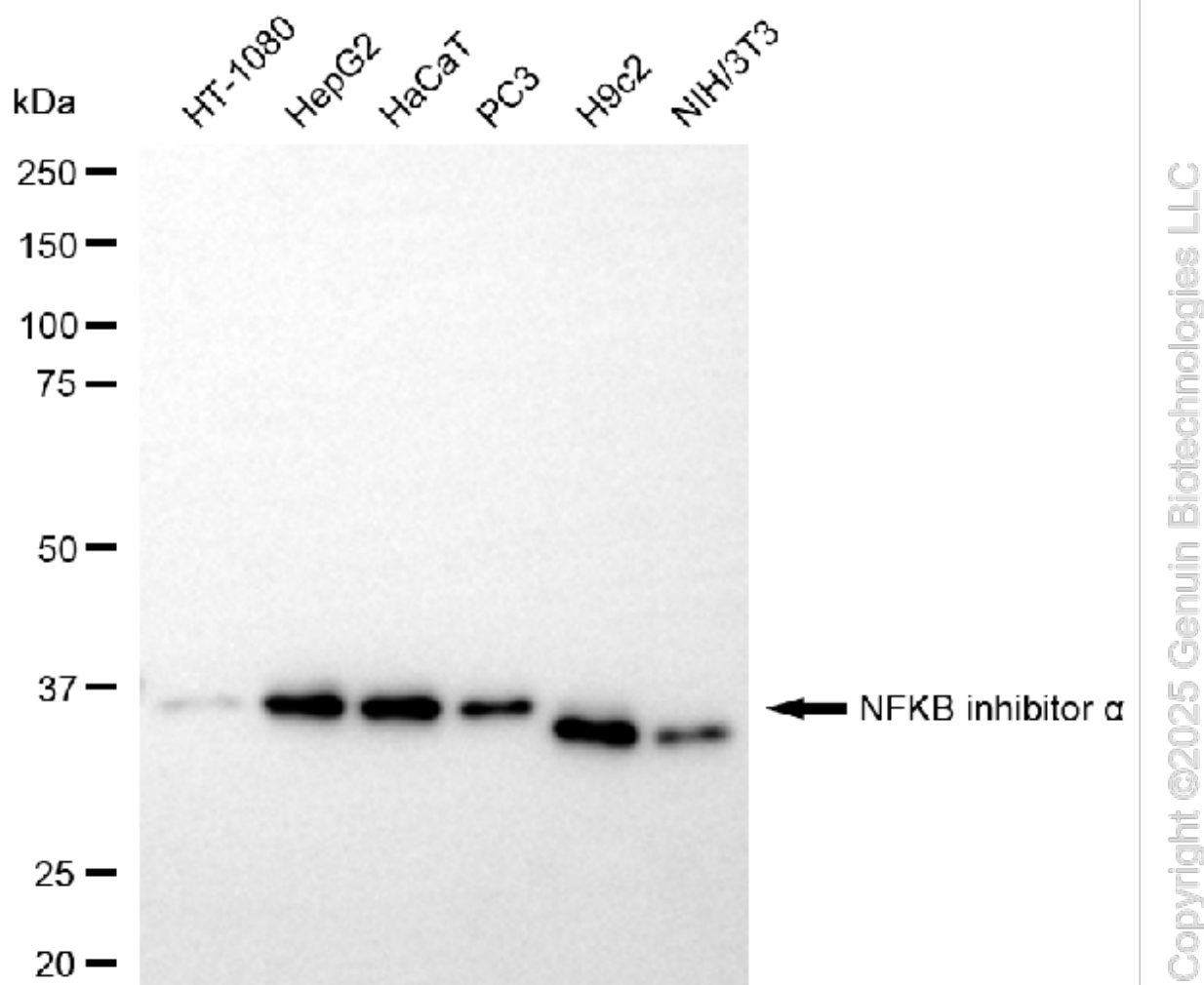
SUPPORT

SUPPORT@GENUINBIOTECH.COM
TEL: +1-540-855-7041

ORDERS

SALES@GENUINBIOTECH.COM
FAX: +1-540-855-7041

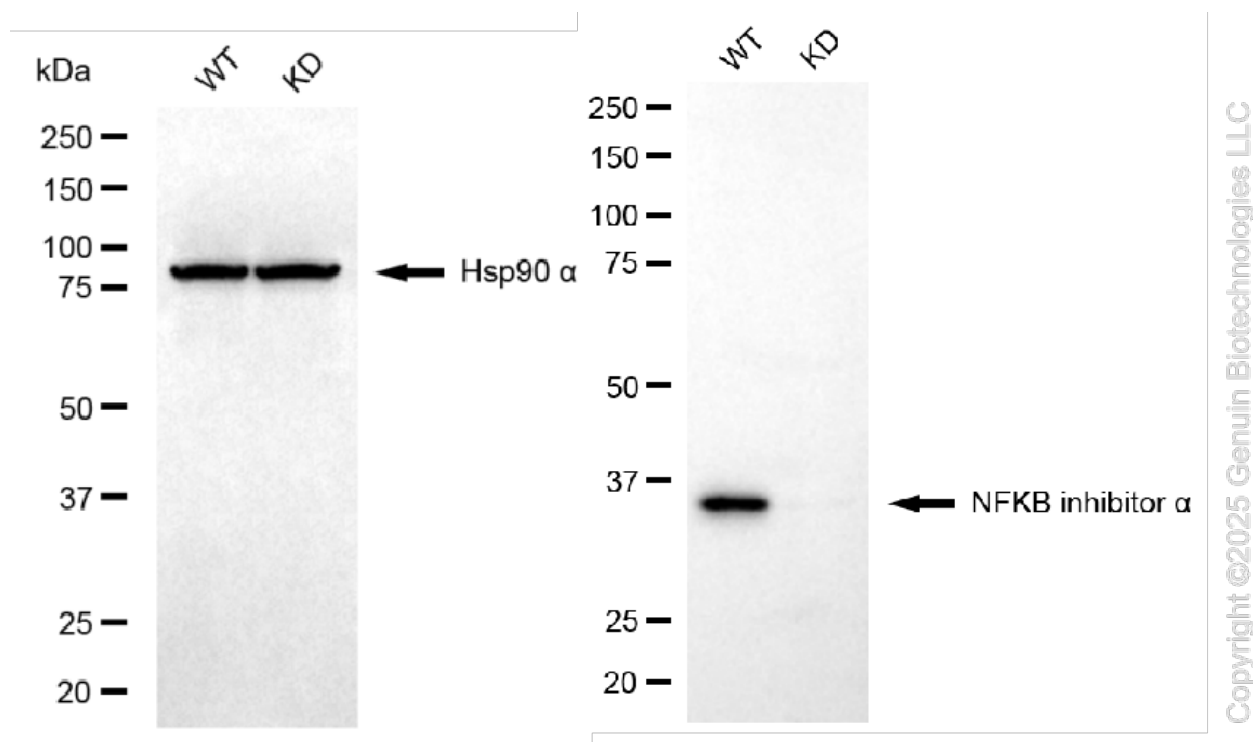
WWW.GENUINBIOTECH.COM



Western blotting analysis using anti-NFKB inhibitor alpha antibody (Cat#61872). Total cell lysates (30 µg) from various cell lines were loaded and separated by SDS-PAGE. The blot was incubated with anti-NFKB inhibitor alpha antibody (Cat#61872, 1:5,000) and HRP-conjugated goat anti-rabbit secondary antibody (Cat#201, 1:20,000) respectively. Image was developed using NaQ™ ECL Substrate Kit (Cat#716).

KD-Validated Anti-NFKB inhibitor α Recombinant Rabbit Monoclonal Antibody

PAGE 4



Western blotting analysis using anti-NFKB inhibitor α antibody (Cat#61872). NFKB inhibitor α expression in wild-type (WT) and NFKB inhibitor α (NFKBIA) knockdown (KD) HSHC cells with 20 μ g of total cell lysates. Hsp90 α serves as a loading control. The blot was incubated with anti-NFKB inhibitor α antibody (Cat#61872, 1:5,000) and HRP-conjugated goat anti-rabbit secondary antibody (Cat#201, 1:20,000) respectively. Image was developed using FeQ™ ECL Substrate Kit (Cat#226).

SUPPORT

SUPPORT@GENUINBIOTECH.COM
TEL: +1-540-855-7041

ORDERS

SALES@GENUINBIOTECH.COM
FAX: +1-540-855-7041

WWW.GENUINBIOTECH.COM