

KD-Validated Anti-LOX Recombinant Rabbit Monoclonal Antibody



Catalog #: 61874

Aliases

Lysyl Oxidase; Protein-Lysine 6-Oxidase; EC 1.4.3.13; AAT10

Background

Gene Name: LOX

NCBI Gene Entry: [4015](#)

UniProt Entry: [P28300](#)

Application Information

Molecular Weight: Predicted, 47 kDa; observed, 50 kDa

Clonality: Rabbit monoclonal antibody

Clone ID: 25GB4045

Species Reactivity: Human, mouse, rat

Applications Tested: Western blotting (WB), flow cytometry (FCM), immunocytochemistry (IC)

Immunogen

A synthesized peptide derived from human LOX

Isotype

Rabbit IgG

Storage Buffer

Supplied in PBS (pH 7.4) containing 50% glycerol, and 0.02% sodium azide.

Storage

Store at -20 °C for one year.

Recommended Dilutions

Western blotting (WB): 1:1,000-1:5,000

Flow Cytometry (FCM): 1:2,000

Immunocytochemistry (IC): 1:100-1:1,000

Note: This product is for research use only.

Validation Data

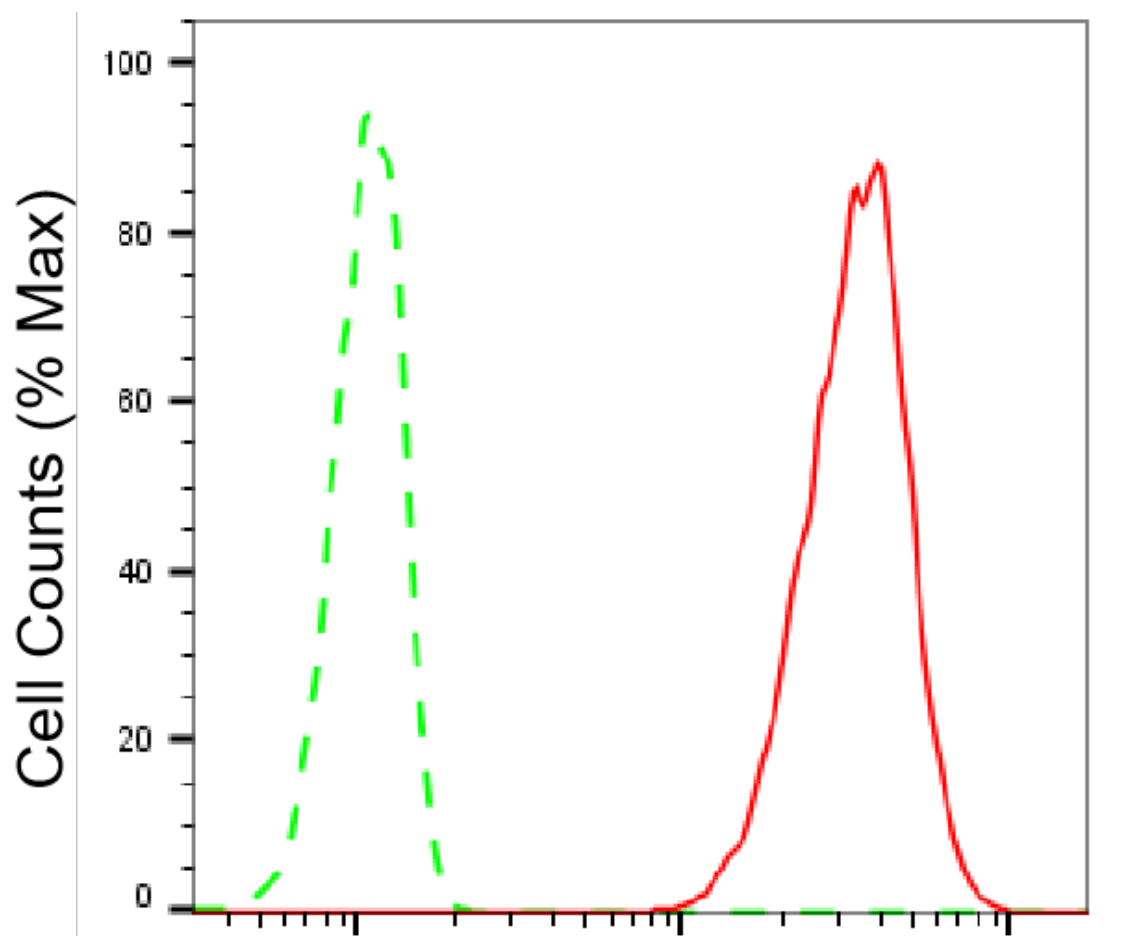
SUPPORT

SUPPORT@GENUINBIOTECH.COM
TEL: +1-540-855-7041

ORDERS

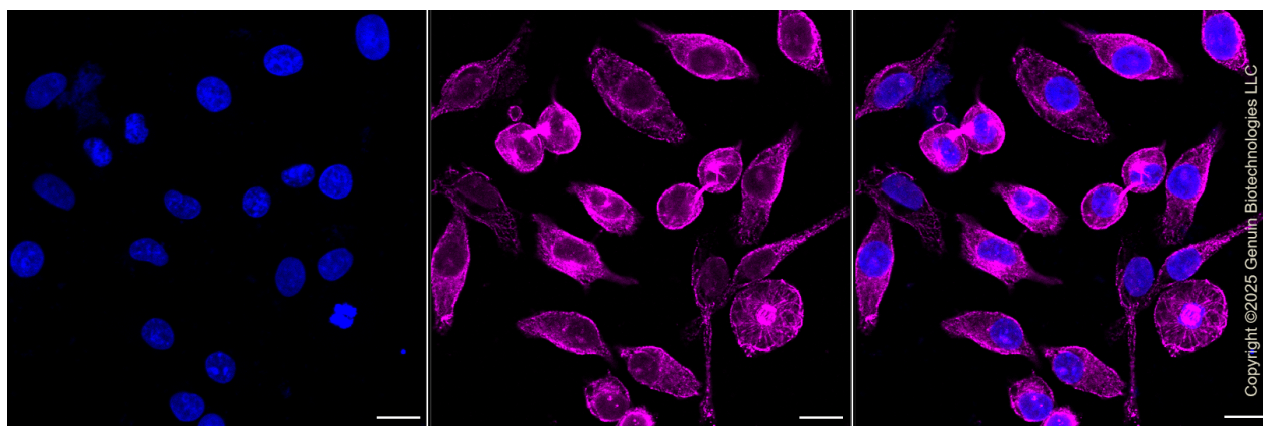
SALES@GENUINBIOTECH.COM
FAX: +1-540-855-7041

WWW.GENUINBIOTECH.COM



LOX-Alexa Fluor® 647

Flow cytometric analysis of LOX expression in HT-1080 cells using LOX antibody (Cat#61874, 1:2,000). Green, isotype control; red, LOX.



Immunocytochemical staining of HepG2 cells with anti-LOX antibody (Cat#61874, 1:1,000). Nuclei were stained blue with DAPI; LOX was stained magenta with Alexa Fluor® 647. Images

SUPPORT

SUPPORT@GENUINBIOTECH.COM
TEL: +1-540-855-7041

ORDERS

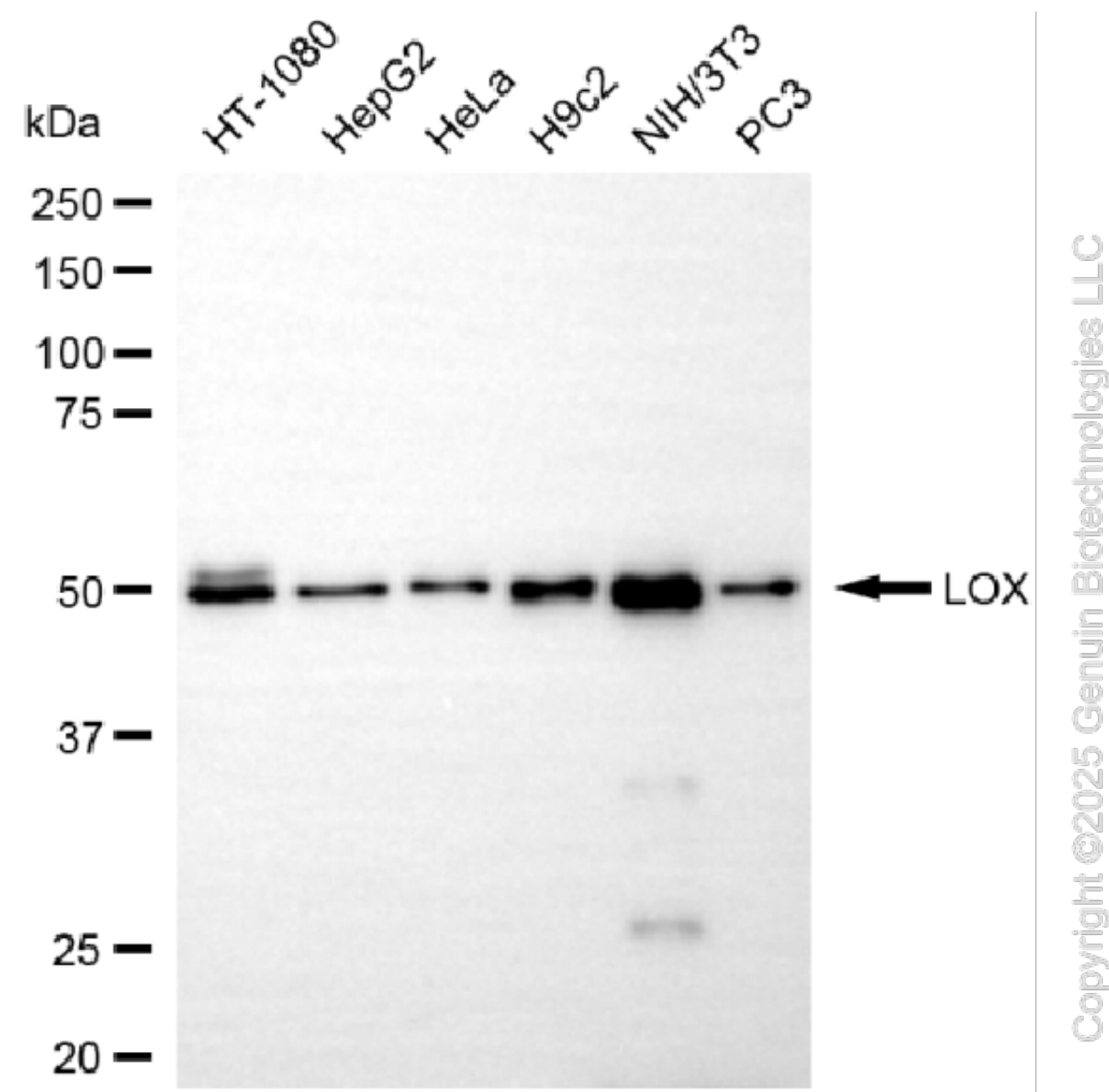
SALES@GENUINBIOTECH.COM
FAX: +1-540-855-7041

WWW.GENUINBIOTECH.COM

KD-Validated Anti-LOX Recombinant Rabbit Monoclonal Antibody

PAGE 3

were taken using Leica stellaris 5. Protein abundance based on laser Intensity and smart gain: High. Scale bar, 20 μ m.



Western blotting analysis using anti-LOX antibody (Cat#61874). Total cell lysates (30 μ g) from various cell lines were loaded and separated by SDS-PAGE. The blot was incubated with anti-LOX antibody (Cat#61874, 1:5,000) and HRP-conjugated goat anti-rabbit secondary antibody (Cat#201, 1:20,000) respectively. Image was developed using NaQ™ ECL Substrate Kit (Cat#716).

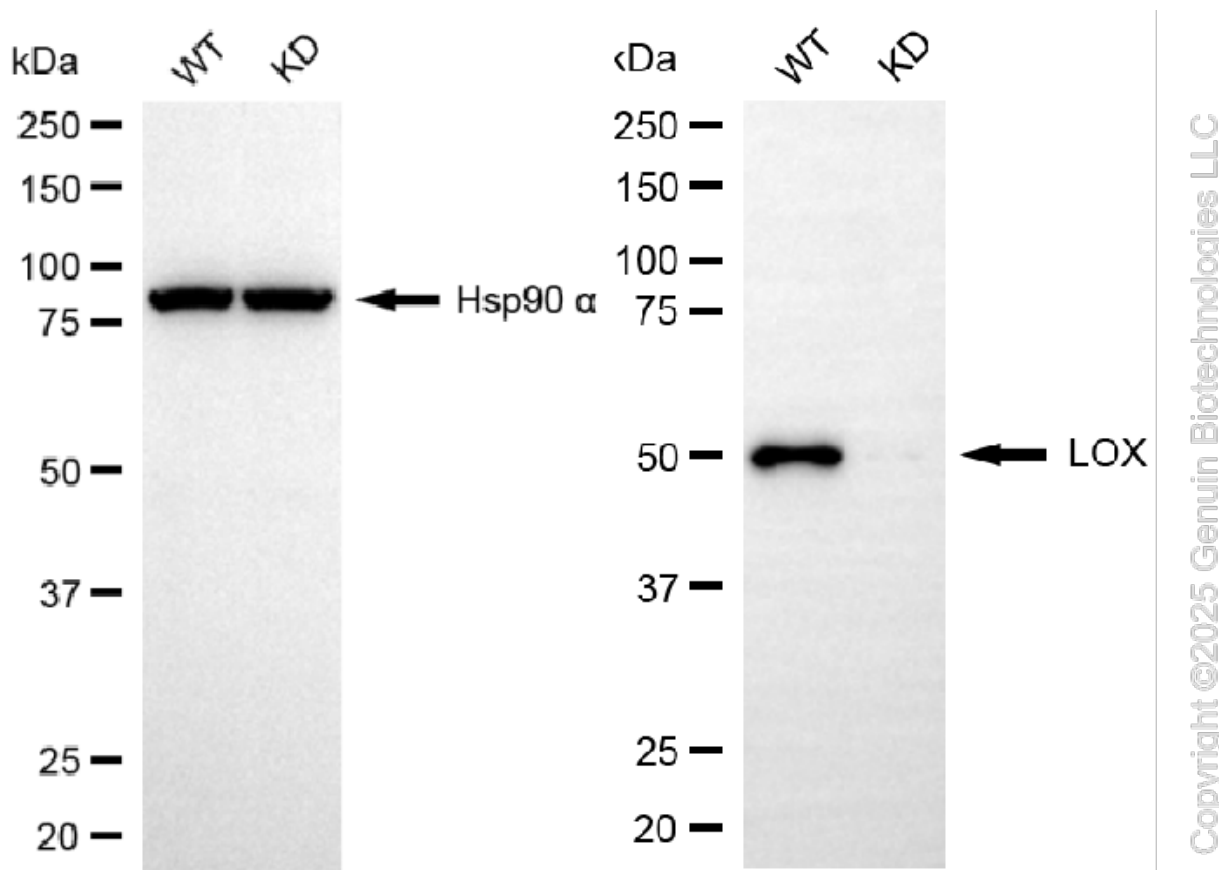
SUPPORT

SUPPORT@GENUINBIOTECH.COM
TEL: +1-540-855-7041

ORDERS

SALES@GENUINBIOTECH.COM
FAX: +1-540-855-7041

WWW.GENUINBIOTECH.COM



Western blotting analysis using anti-LOX antibody (Cat#61874). LOX expression in wild-type (WT) and LOX knockdown (KD) HT-1080 cells with 20 µg of total cell lysates. Hsp90 α serves as a loading control. The blot was incubated with anti-LOX antibody (Cat#61874, 1:5,000) and HRP-conjugated goat anti-rabbit secondary antibody (Cat#201, 1:20,000) respectively. Image was developed using NaQ™ ECL Substrate Kit (Cat#716).