

KD-Validated Anti-gamma Tubulin Recombinant Rabbit Monoclonal Antibody



Catalog #: 61875

Aliases

TUBG1; Tubulin Gamma 1; TUBGCP1; TUBG; Gamma-Tubulin Complex Component 1; Tubulin, Gamma Polypeptide; Tubulin Gamma-1 Chain; GCP-1; Tubulin, Gamma 1; Gamma-1-Tubulin; CDCBM4

Background

Gene Name: TUBG1

NCBI Gene Entry: [7283](#)

UniProt Entry: [P23258](#)

Application Information

Molecular Weight: Predicted, 51 kDa, observed, 48 kDa

Clonality: Rabbit monoclonal antibody

Clone ID: 23GB4805

Species Reactivity: Human, mouse, rat

Applications Tested: Western blotting (WB), flow cytometry (FCM), immunocytochemistry (IC)

Immunogen

A synthesized peptide derived from human Tubulin gamma

Isotype

Rabbit IgG

Storage Buffer

Supplied in PBS (pH 7.4) containing 50% glycerol, and 0.02% sodium azide.

Storage

Store at -20 °C for one year.

Recommended Dilutions

Western Blotting (WB): 1:1,000-1:5,000

Flow Cytometry (FCM): 1:2,000

Immunocytochemistry (IC): 1:100-1:1,000

Note: This product is for research use only.

SUPPORT

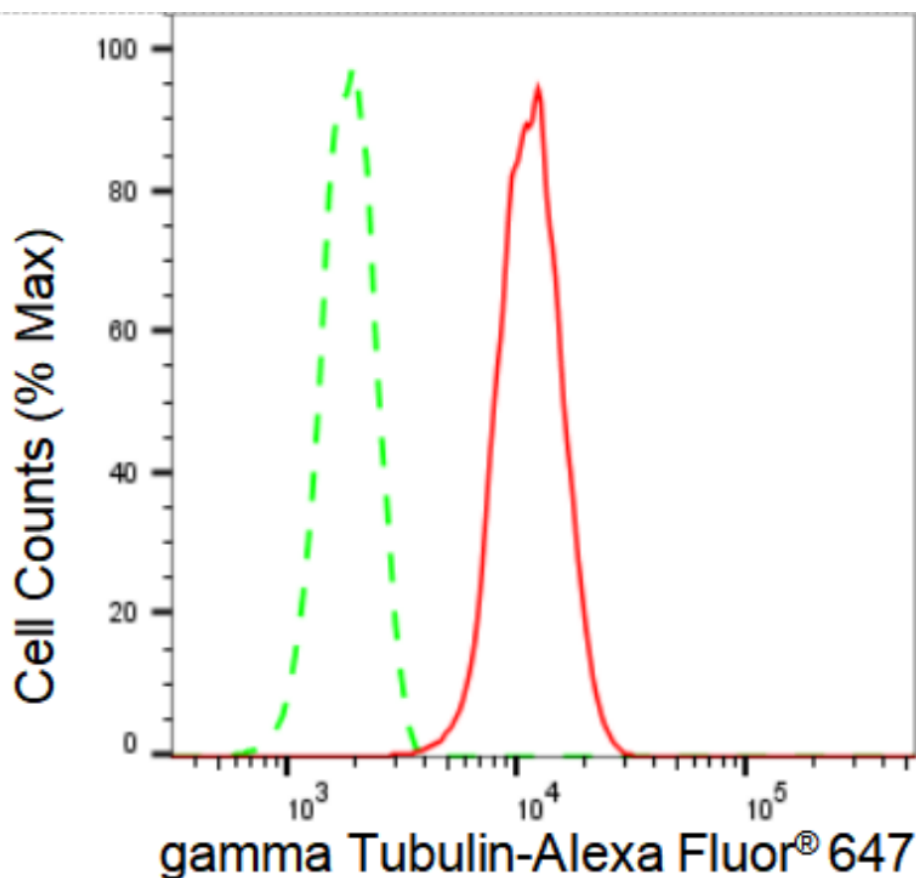
SUPPORT@GENUINBIOTECH.COM
TEL: +1-540-855-7041

ORDERS

SALES@GENUINBIOTECH.COM
FAX: +1-540-855-7041

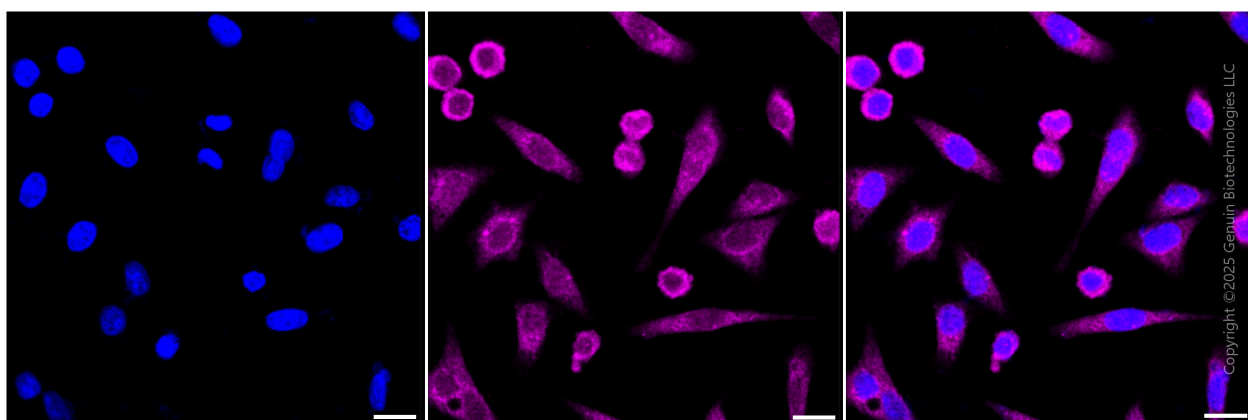
WWW.GENUINBIOTECH.COM

Validation Data



Copyright ©2024 Genuin Biotechnologies LLC

Flow cytometric analysis of gamma Tubulin expression in HepG2 cells using gamma Tubulin antibody (Cat#61875, 1:2,000). Green, isotype control; red, gamma Tubulin.



Copyright ©2025 Genuin Biotechnologies LLC

Immunocytochemical staining of HepG2 cells with anti-Gamma Tubulin antibody (Cat #61875, 1:1,000) . Nuclei were stained blue with DAPI; Gamma Tubulin was stained magenta with Alexa Fluor® 647. Images were taken using Leica stellaris 5. Protein abundance based on laser Intensity and smart gain: Medium. Scale bar, 20 μm.

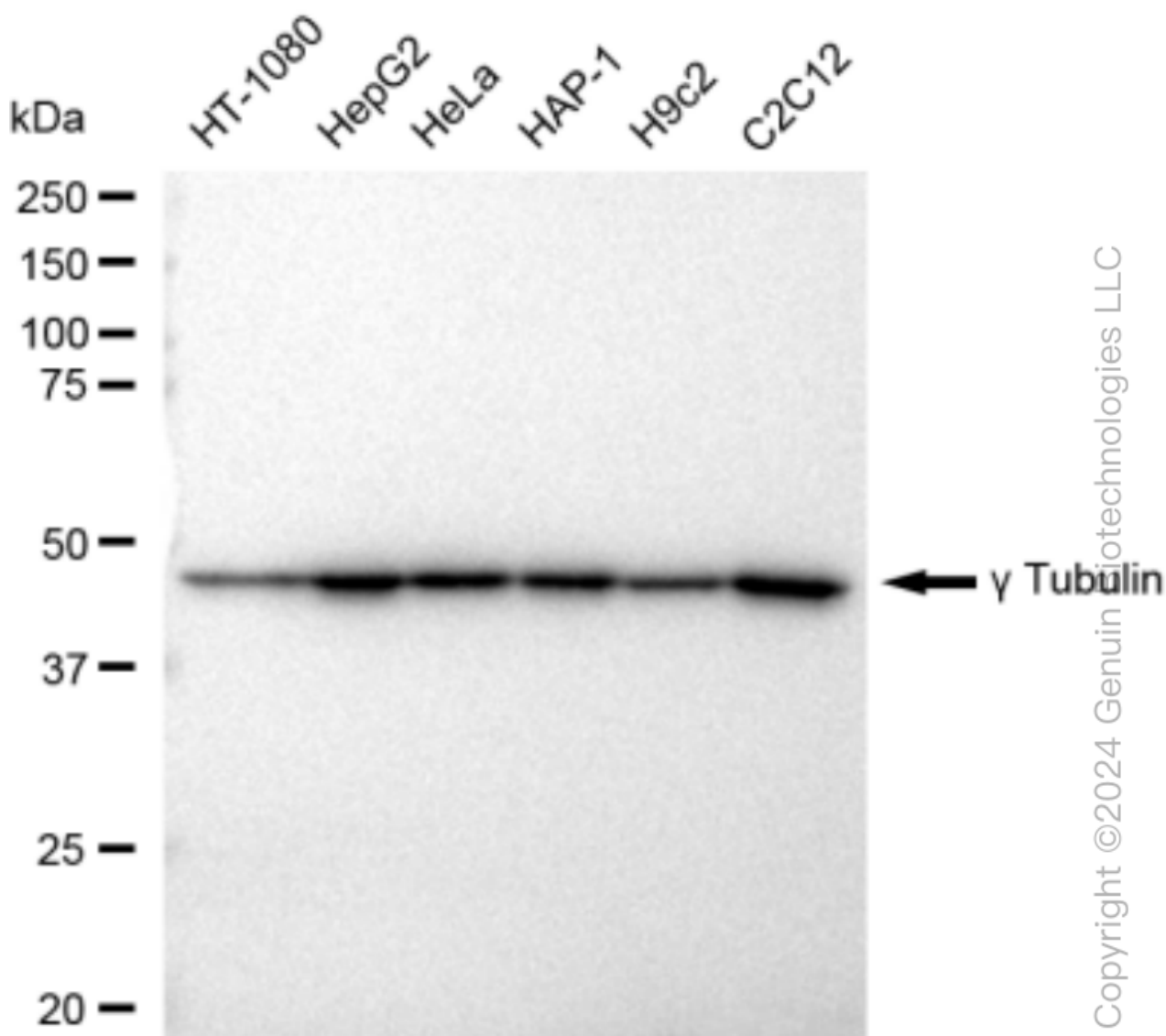
SUPPORT

SUPPORT@GENUINBIOTECH.COM
TEL: +1-540-855-7041

ORDERS

SALES@GENUINBIOTECH.COM
FAX: +1-540-855-7041

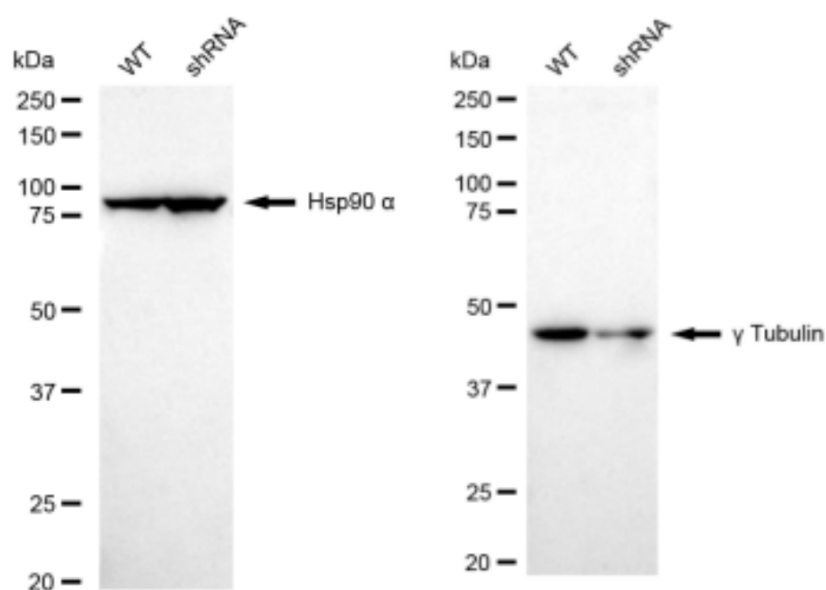
WWW.GENUINBIOTECH.COM



Western blotting analysis using anti-gamma Tubulin antibody (Cat#61875). Total cell lysates (30 µg) from various cell lines were loaded and separated by SDS-PAGE. The blot was incubated with anti-gamma Tubulin antibody (Cat#61875, 1:5,000) and HRP-conjugated goat anti-rabbit secondary antibody (Cat#201, 1:20,000) respectively. Image was developed using FeQ™ ECL Substrate Kit (Cat#226).

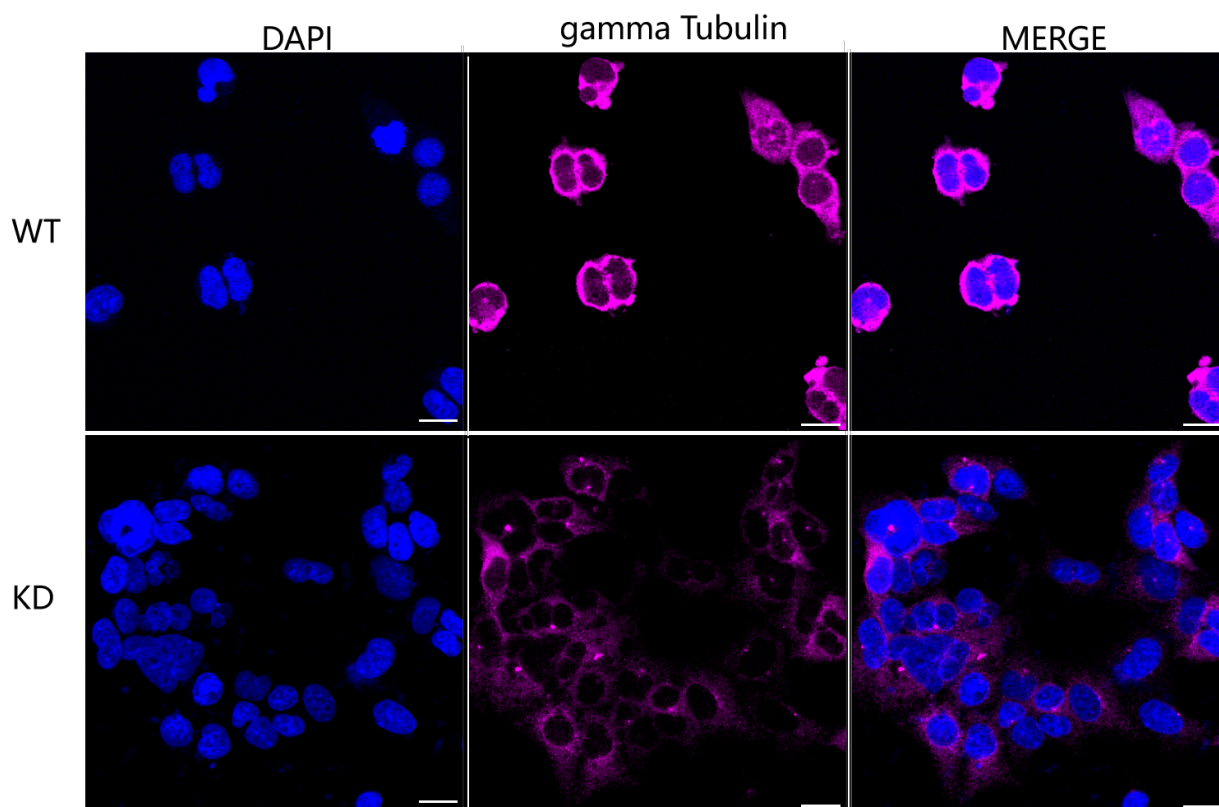
KD-Validated Anti-gamma Tubulin Recombinant Rabbit Monoclonal Antibody

PAGE 4



Copyright ©2024 Genuin Biotechnologies LLC

Western blotting analysis using anti-gamma Tubulin antibody (Cat#61875). gamma Tubulin expression in wild type (WT) and gamma Tubulin shRNA knockdown (KD) HeLa cells with 30 μ g of total cell lysates. Hsp90 α serves as a loading control. The blot was incubated with anti-gamma Tubulin antibody (Cat#61875, 1:5,000) and HRP-conjugated goat anti-rabbit secondary antibody (Cat#201, 1:20,000) respectively. Image was developed using FeQ™ ECL Substrate Kit (Cat#226).



Copyright ©2025 Genuin Biotechnologies LLC

SUPPORT

SUPPORT@GENUINBIOTECH.COM
TEL: +1-540-855-7041

ORDERS

SALES@GENUINBIOTECH.COM
FAX: +1-540-855-7041

WWW.GENUINBIOTECH.COM

KD-Validated Anti-gamma Tubulin Recombinant Rabbit Monoclonal Antibody

PAGE 5

Immunocytochemical staining of HeLa cells using anti-gamma Tubulin antibody (Cat#61875, 1:1,000), Top panel: wild-type (WT); Bottom panel: gamma Tubulin shRNA knockdown (KD). Nuclei were stained blue with DAPI; gamma Tubulin was stained magenta with Alexa Fluor® 647. Scale bar, 20 μ m. Permeabilization: Triton.

SUPPORT

SUPPORT@GENUINBIOTECH.COM
TEL: +1-540-855-7041

ORDERS

SALES@GENUINBIOTECH.COM
FAX: +1-540-855-7041

WWW.GENUINBIOTECH.COM