

# KD-Validated Anti-Thioredoxin reductase 2 Recombinant Rabbit Monoclonal Antibody



**Catalog #: 61876**

## Aliases

TXNRD2; Thioredoxin Reductase 2; TRXR2; Selenoprotein Z; SELZ; TR3; TR; Thioredoxin Reductase 2, Mitochondrial; Thioredoxin Reductase Beta; Thioredoxin Reductase TR3; EC 1.8.1.9 4; TXNR2; Thioredoxin Reductase 3; KIAA1652; EC 1.8.1; TR-BETA; TR-Beta; GCCD5; SelZ

## Background

Gene Name: TXNRD2

NCBI Gene Entry: [10587](#)

UniProt Entry: [Q9NNW7](#)

## Application Information

Molecular Weight: Predicted, 57 kDa, observed, 57 kDa

Clonality: Rabbit monoclonal antibody

Clone ID: 23GB4925

Species Reactivity: Human

Applications Tested: Western blotting (WB), flow cytometry (FCM), immunocytochemistry (IC)

## Immunogen

A synthesized peptide derived from human TXNRD2

## Isotype

Rabbit IgG

## Storage Buffer

Supplied in PBS (pH 7.4) containing 50% glycerol, and 0.02% sodium azide.

## Storage

Store at -20 °C for one year.

## Recommended Dilutions

Western Blotting (WB): 1:1,000-1:5,000

Flow Cytometry (FCM): 1:2,000

Immunocytochemistry (IC): 1:100-1:1,000

---

### SUPPORT

SUPPORT@GENUINBIOTECH.COM  
TEL: +1-540-855-7041

### ORDERS

SALES@GENUINBIOTECH.COM  
FAX: +1-540-855-7041

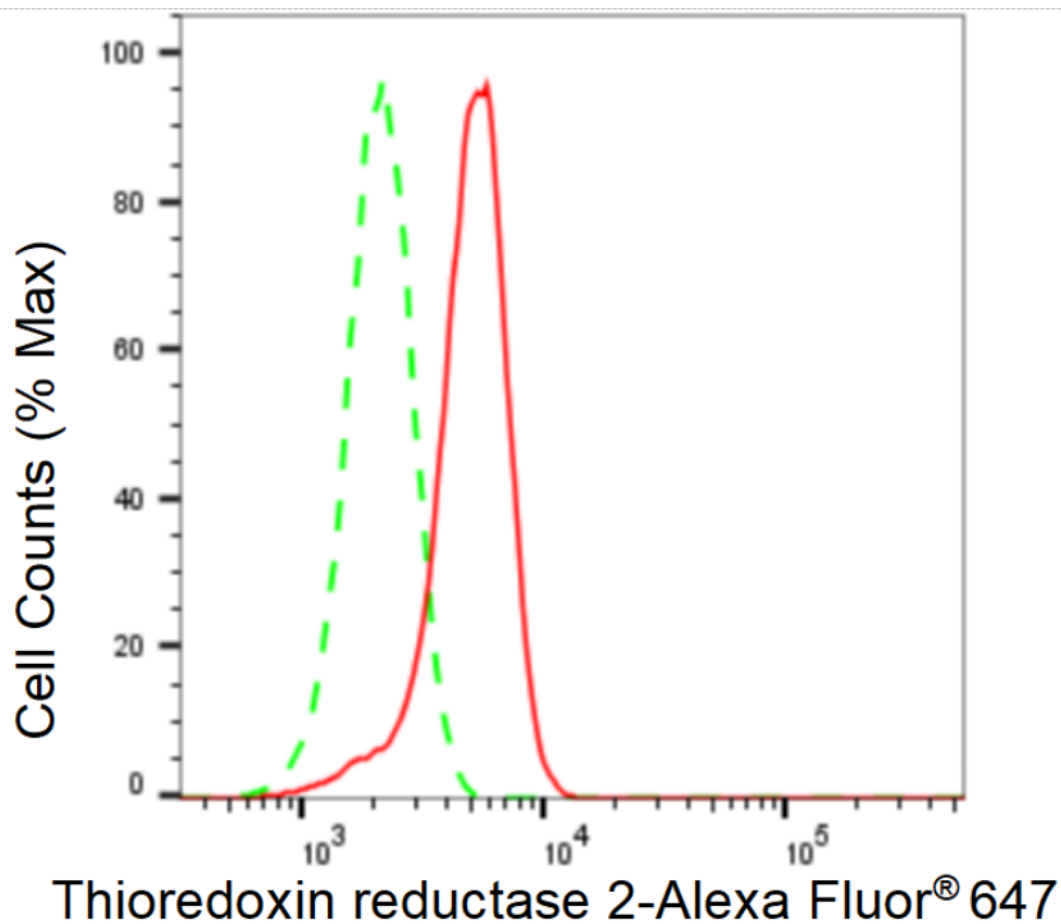
[WWW.GENUINBIOTECH.COM](http://WWW.GENUINBIOTECH.COM)

## KD-Validated Anti-Thioredoxin reductase 2 Recombinant Rabbit Monoclonal Antibody

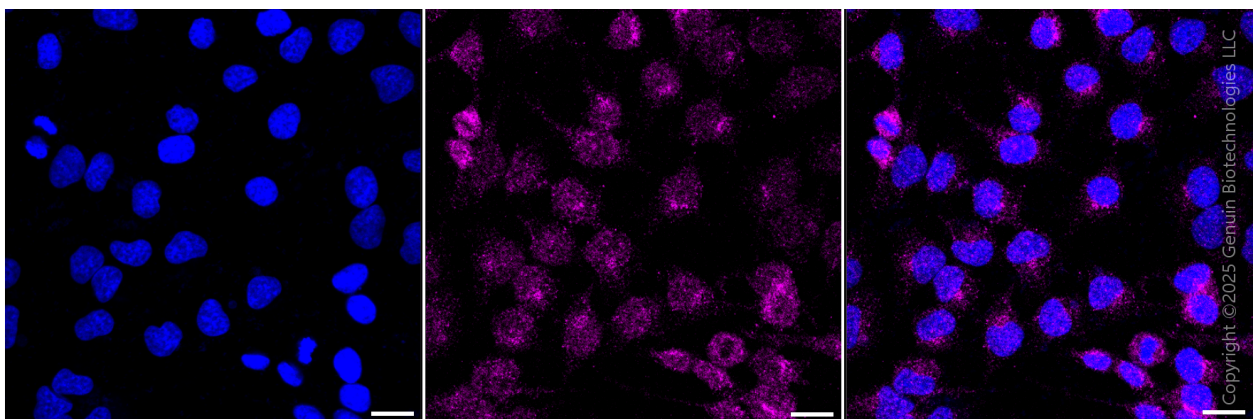
PAGE 2

**Note:** This product is for research use only.

### Validation Data



Flow cytometric analysis of Thioredoxin reductase 2 expression in HeLa cells using Thioredoxin reductase 2 antibody (Cat#61876, 1:2,000). Green, isotype control; red, Thioredoxin reductase 2.



Immunocytochemical staining of HeLa cells with anti-Thioredoxin reductase 2 antibody (Cat#61876, 1:1,000). Nuclei were stained blue with DAPI; Thioredoxin reductase 2 was stained

#### SUPPORT

SUPPORT@GENUINBIOTECH.COM  
TEL: +1-540-855-7041

#### ORDERS

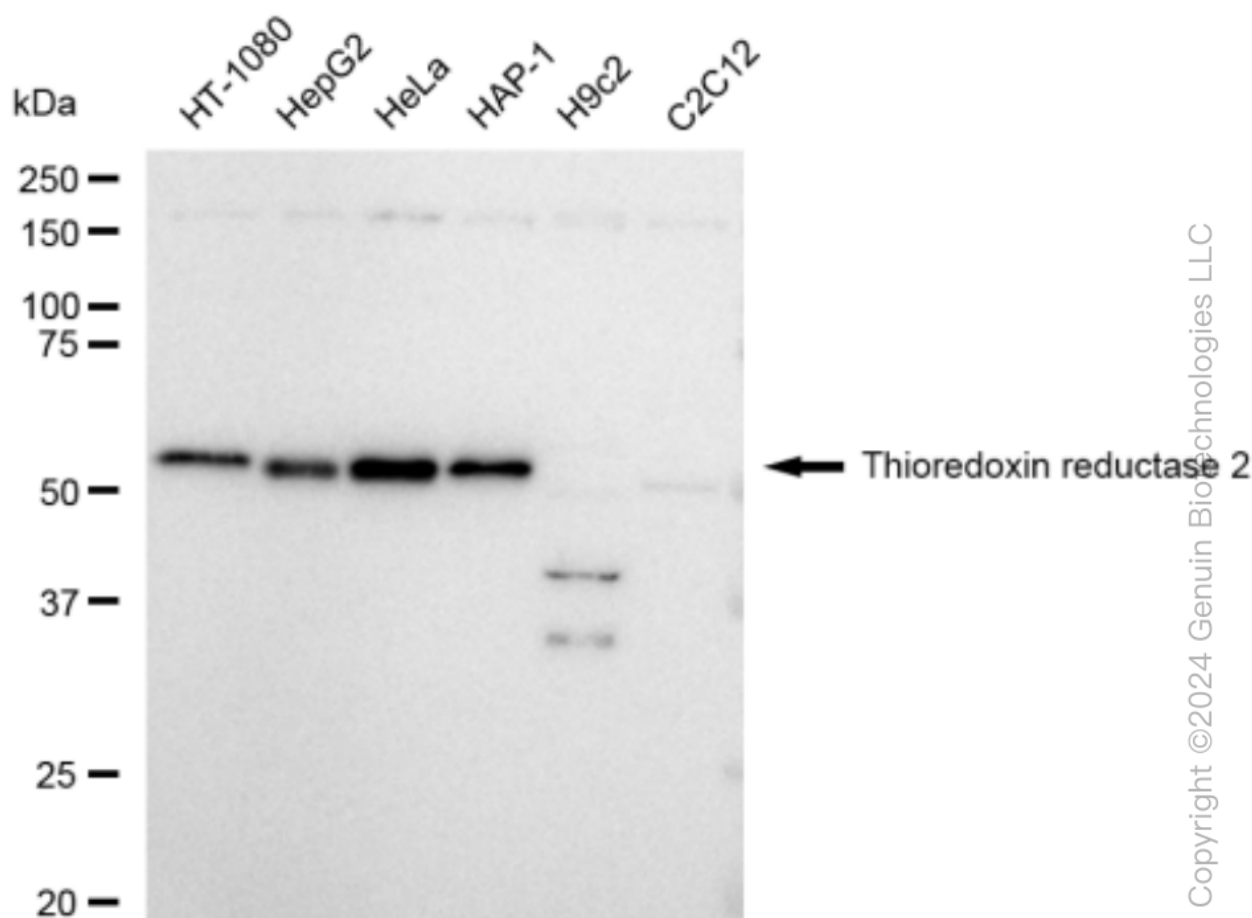
SALES@GENUINBIOTECH.COM  
FAX: +1-540-855-7041

[WWW.GENUINBIOTECH.COM](http://WWW.GENUINBIOTECH.COM)

## KD-Validated Anti-Thioredoxin reductase 2 Recombinant Rabbit Monoclonal Antibody

PAGE 3

magenta with Alexa Fluor® 647. Images were taken using Leica stellaris 5. Protein abundance based on laser Intensity and smart gain: Medium. Scale bar: 20 µm.



Western blotting analysis using anti-Thioredoxin reductase 2 antibody (Cat#61876). Total cell lysates (30 µg) from various cell lines were loaded and separated by SDS-PAGE. The blot was incubated with anti-Thioredoxin reductase 2 antibody (Cat#61876, 1:5,000) and HRP-conjugated goat anti-rabbit secondary antibody (Cat#201, 1:20,000) respectively. Image was developed using FeQ™ ECL Substrate Kit (Cat#226).

### SUPPORT

SUPPORT@GENUINBIOTECH.COM  
TEL: +1-540-855-7041

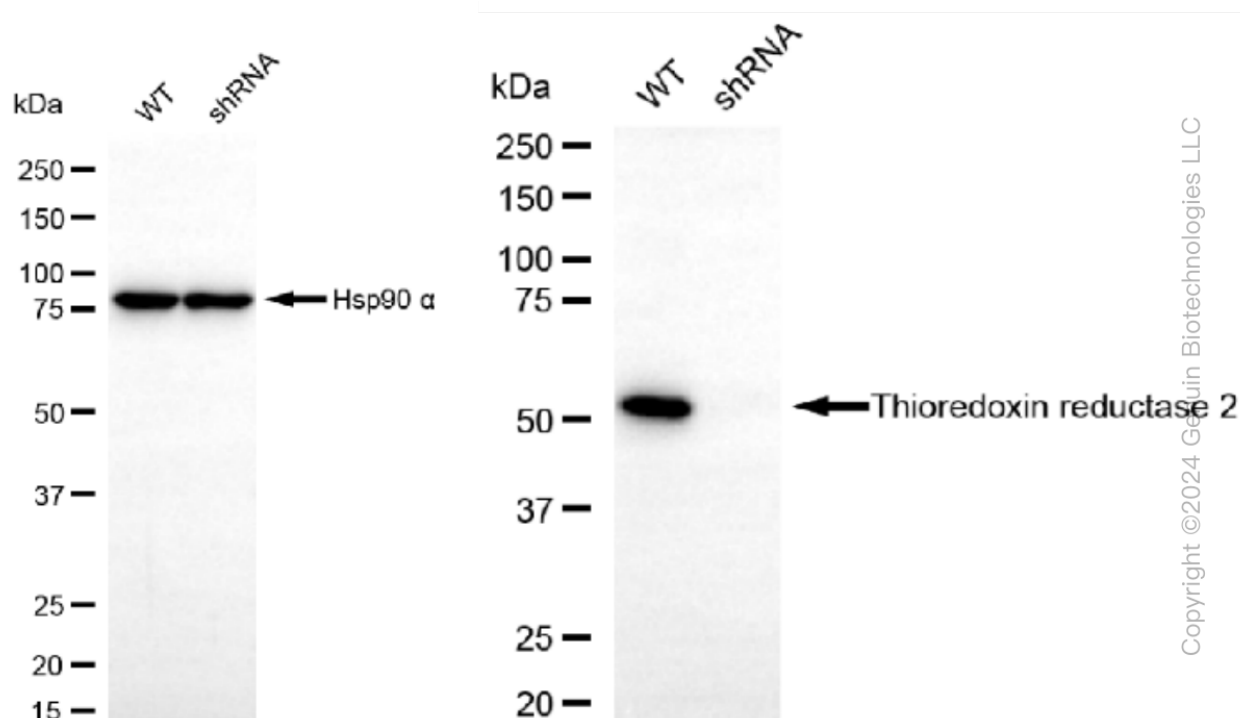
### ORDERS

SALES@GENUINBIOTECH.COM  
FAX: +1-540-855-7041

WWW.GENUINBIOTECH.COM

## KD-Validated Anti-Thioredoxin reductase 2 Recombinant Rabbit Monoclonal Antibody

PAGE 4



Western blotting analysis using anti-Thioredoxin reductase 2 antibody (Cat#61876). Thioredoxin reductase 2 expression in wild type (WT) and Thioredoxin reductase 2 shRNA knockdown (KD) HT-1080 cells with 30 µg of total cell lysates. Hsp90 α serves as a loading control. The blot was incubated with anti-Thioredoxin reductase 2 antibody (Cat#61876, 1:5,000) and HRP-conjugated goat anti-rabbit secondary antibody (Cat#201, 1:20,000) respectively. Image was developed using FeQ™ ECL Substrate Kit (Cat#226).

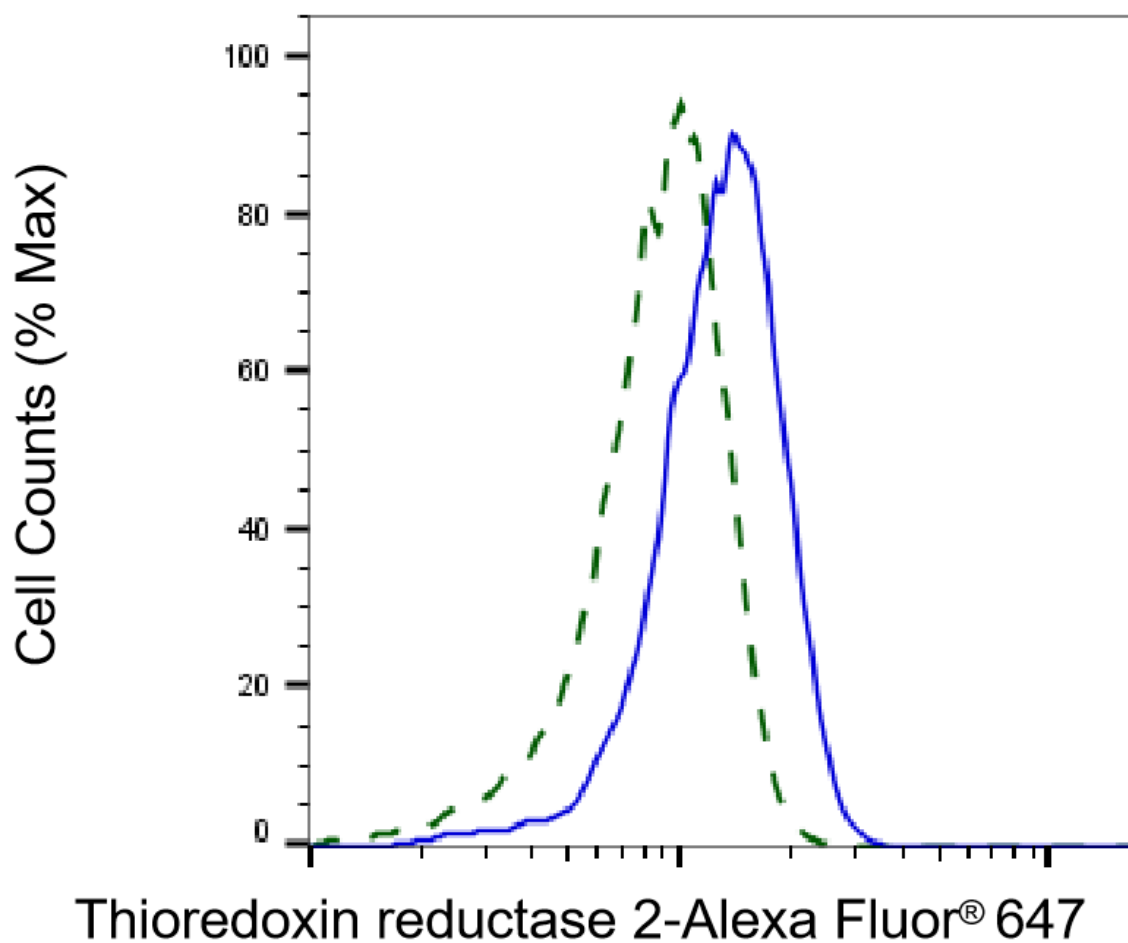
### SUPPORT

SUPPORT@GENUINBIOTECH.COM  
TEL: +1-540-855-7041

### ORDERS

SALES@GENUINBIOTECH.COM  
FAX: +1-540-855-7041

[WWW.GENUINBIOTECH.COM](http://WWW.GENUINBIOTECH.COM)



Copyright ©2025 Genuin Biotechnologies LLC

Validation of Thioredoxin reductase 2 knockdown using flow cytometry. Wild-type(WT, Blue) and knockdown(KD, Green) HT-1080 cells were stained with anti-Thioredoxin reductase 2 antibody (Cat#61876, 1:2,000) and analyzed using BD flow cytometer.