

KD-Validated Anti-Ku70 Recombinant Rabbit Monoclonal Antibody



Catalog #: 61879

Aliases

XRCC6; X-Ray Repair Cross Complementing 6; X-Ray Repair Complementing Defective Repair In Chinese Hamster Cells 6; G22P1; KU70; ML8; X-Ray Repair Cross-Complementing Protein 6; Thyroid Autoantigen 70kDa (Ku Antigen); ATP-Dependent DNA Helicase 2 Subunit 1; Thyroid Autoantigen 70kD (Ku Antigen); 5'-Deoxyribose-5-Phosphate Lyase Ku70; Lupus Ku Autoantigen Protein P70; 70 KDa Subunit Of Ku Antigen; DNA Repair Protein XRCC6; Ku Autoantigen, 70kDa; 5'-DRP Lyase Ku70; D22S731; D22S671; CTC75; CTCBF; TLAA; ATP-Dependent DNA Helicase II, 70 KDa Subunit; ATP-Dependent DNA Helicase II 70 KDa Subunit; CTC Box Binding Factor 75 KDa Subunit; CTC Box-Binding Factor 75 KDa Subunit; Thyroid-Lupus Autoantigen P70; Ku Autoantigen P70 Subunit; Thyroid-Lupus Autoantigen; EC 4.2.99.-; EC 3.6.4.-; Ku70

Background

Gene Name: XRCC6

NCBI Gene Entry: [2547](#)

UniProt Entry: [P12956](#)

Application Information

Molecular Weight: Predicted, 70 kDa, observed, 70 kDa

Clonality: Rabbit monoclonal antibody

Clone ID: 23GB4855

Species Reactivity: Human

Applications Tested: Western blotting (WB), flow cytometry (FCM), immunocytochemistry (IC)

Immunogen

A synthesized peptide derived from human Ku70

Isotype

Rabbit IgG

Storage Buffer

Supplied in PBS (pH 7.4) containing 50% glycerol, and 0.02% sodium azide.

Storage

Store at -20 °C for one year.

SUPPORT

SUPPORT@GENUINBIOTECH.COM
TEL: +1-540-855-7041

ORDERS

SALES@GENUINBIOTECH.COM
FAX: +1-540-855-7041

WWW.GENUINBIOTECH.COM

KD-Validated Anti-Ku70 Recombinant Rabbit Monoclonal Antibody

PAGE 2

Recommended Dilutions

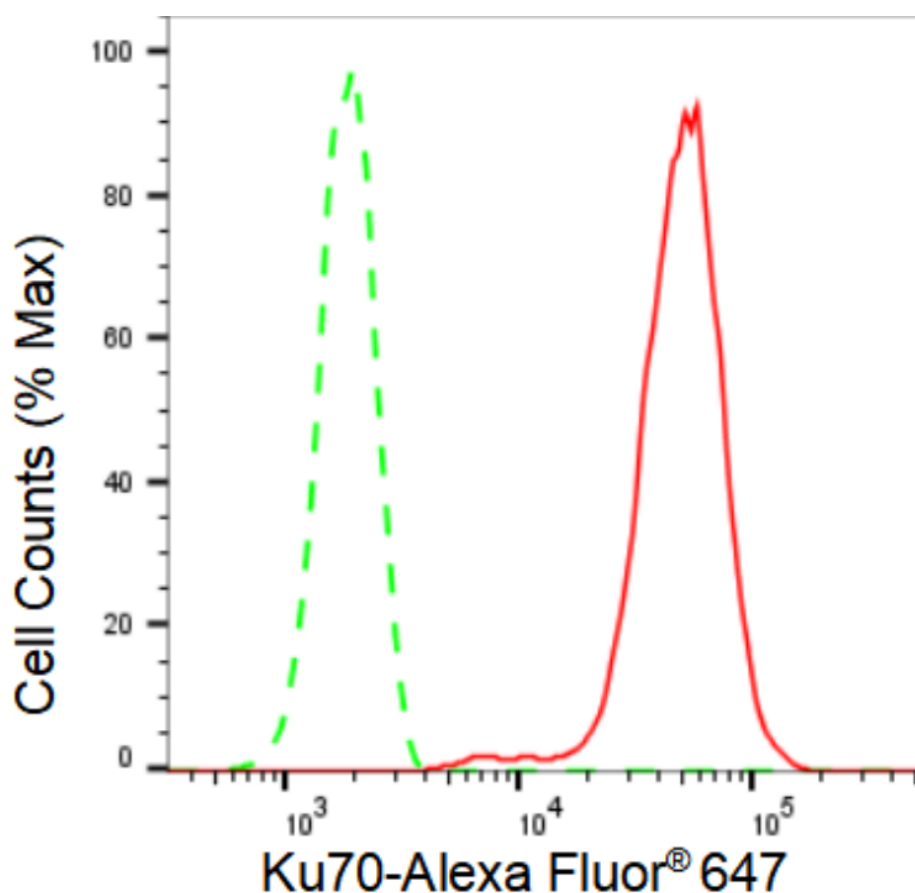
Western Blotting (WB): 1:1,000-1:5,000

Immunocytochemistry (IC): 1:100-1:1,000

Flow Cytometry (FCM): 1:2,000

Note: This product is for research use only.

Validation Data



Copyright ©2024 Genuin Biotechnologies LLC

Flow cytometric analysis of Ku70 expression in HepG2 cells using Ku70 antibody (Cat#61879, 1:2,000). Green, isotype control; red, Ku70.

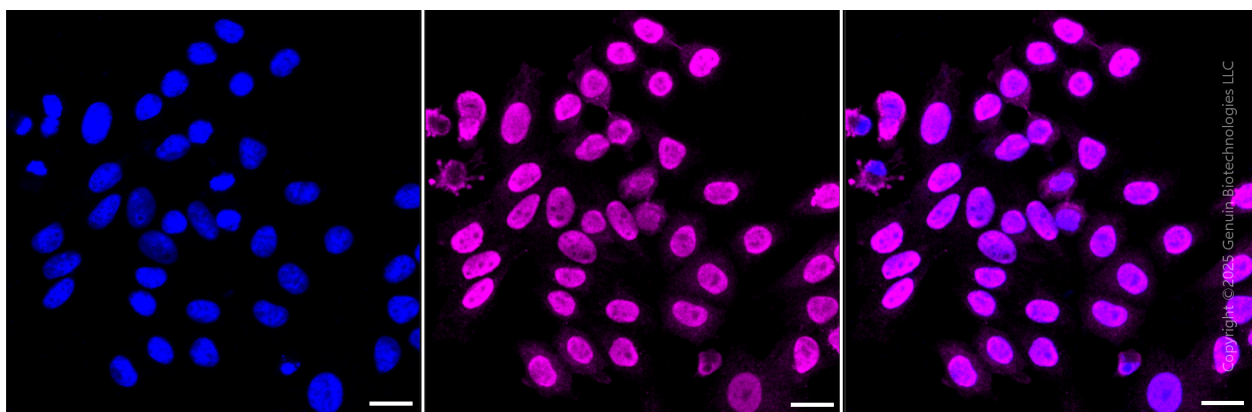
SUPPORT

SUPPORT@GENUINBIOTECH.COM
TEL: +1-540-855-7041

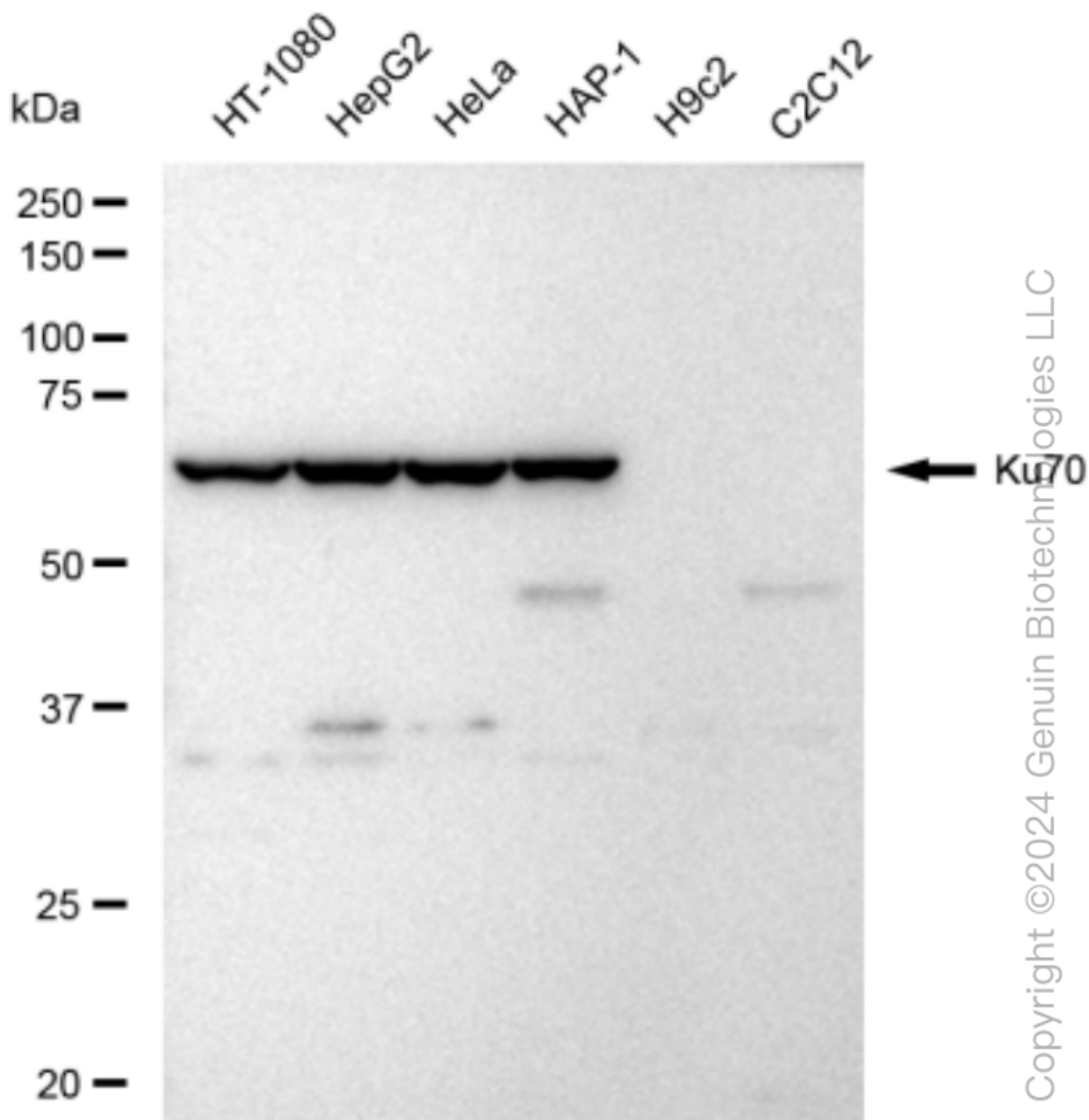
ORDERS

SALES@GENUINBIOTECH.COM
FAX: +1-540-855-7041

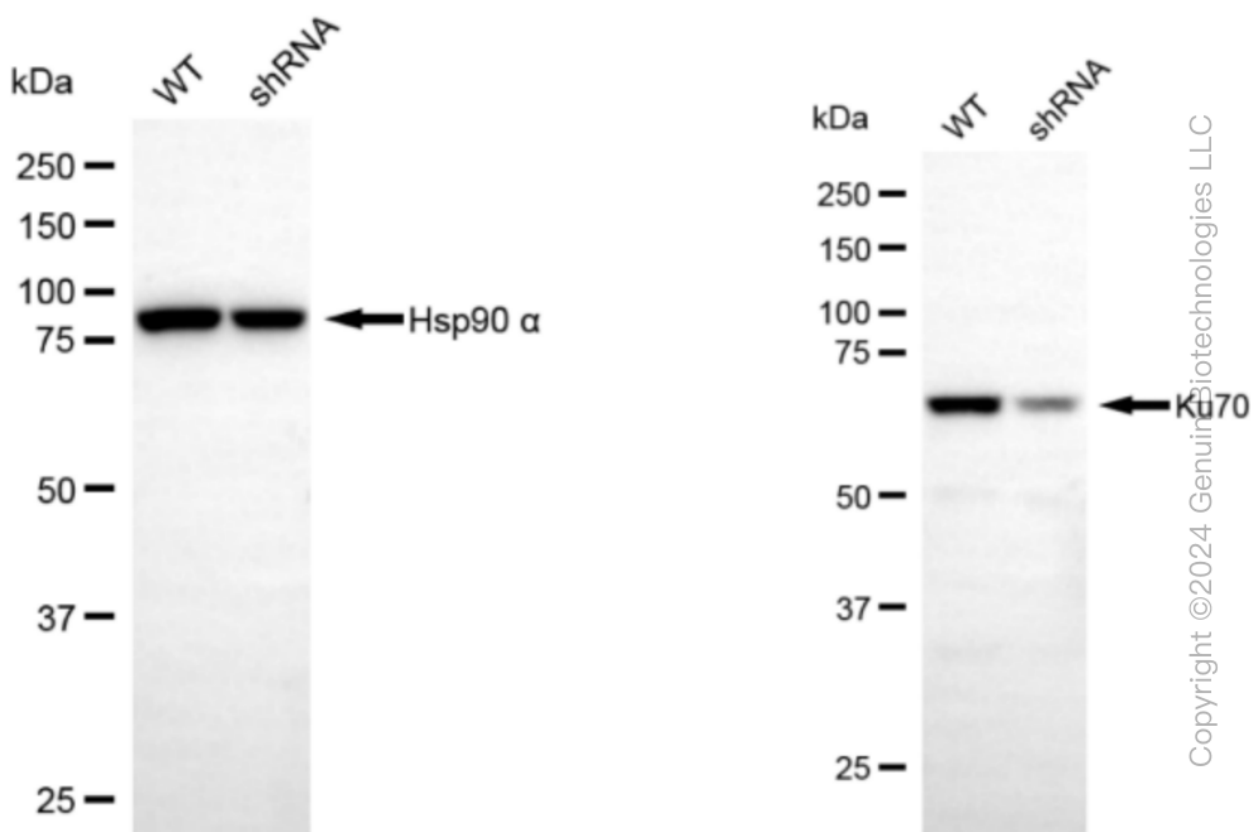
WWW.GENUINBIOTECH.COM



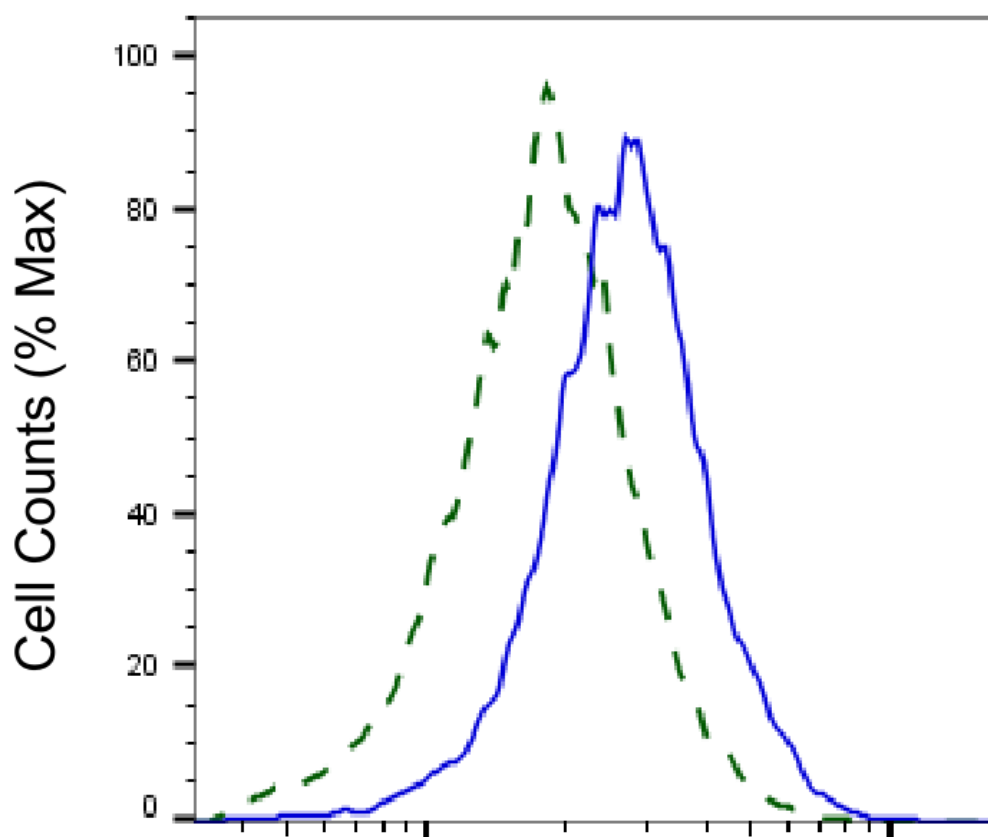
Immunocytochemical staining of HepG2 cells with anti-Ku70 antibody (Cat #61879, 1:1,000) . Nuclei were stained blue with DAPI; Ku70 was stained magenta with Alexa Fluor® 647. Images were taken using Leica stellaris 5. Protein abundance based on laser Intensity and smart gain: High. Scale bar, 20 µm.



Western blotting analysis using anti-Ku70 antibody (Cat#61879). Total cell lysates (30 µg) from various cell lines were loaded and separated by SDS-PAGE. The blot was incubated with anti-Ku70 antibody (Cat#61879, 1:5,000) and HRP-conjugated goat anti-rabbit secondary antibody (Cat#201, 1:20,000) respectively. Image was developed using FeQ™ ECL Substrate Kit (Cat#226).



Western blotting analysis using anti-Ku70 antibody (Cat#61879). Ku70 expression in wild type (WT) and Ku70 shRNA knockdown (KD) HeLa cells with 30 µg of total cell lysates. β-Tubulin serves as a loading control. The blot was incubated with anti-Ku70 antibody (Cat#61879, 1:5,000) and HRP-conjugated goat anti-rabbit secondary antibody (Cat#201, 1:20,000) respectively. Image was developed using FeQ™ ECL Substrate Kit (Cat#226).



Copyright ©2025 Genuin Biotechnologies LLC

Ku70-Alexa Fluor® 647

Validation of Ku70 knockdown using flow cytometry. Wild-type(WT, Blue) and knockdown(KD, Green) HeLa cells were stained with anti-Ku70 antibody (Cat#61879, 1:2,000) and analyzed using BD flow cytometer.