

KD-Validated Anti-YES1 Recombinant Rabbit Monoclonal Antibody



Catalog #: 61880

Aliases

YES1; YES Proto-Oncogene 1, Src Family Tyrosine Kinase; V-Yes-1 Yamaguchi Sarcoma Viral Oncogene Homolog 1; Tyrosine-Protein Kinase Yes; Proto-Oncogene C-Yes; EC 2.7.10.2 4; HsT441; C-Yes; Yes; YES; YES1 Proto-Oncogene, Src Family Tyrosine Kinase; Proto-Oncogene Tyrosine-Protein Kinase YES; Yamaguchi Sarcoma Oncogene; Cellular Yes-1 Protein; EC 2.7.10; P61-YES; P61-Yes; HST441; C-YES

Background

Gene Name: YES1

NCBI Gene Entry: [7525](#)

UniProt Entry: [P07947](#)

Application Information

Molecular Weight: Predicted, 61 kDa, observed, 61 kDa

Clonality: Rabbit monoclonal antibody

Clone ID: 23GB4945

Species Reactivity: Human, mouse, rat

Applications Tested: Western blotting (WB), flow cytometry (FCM), immunocytochemistry (IC)

Immunogen

A synthesized peptide derived from human Yes1

Isotype

Rabbit IgG

Storage Buffer

Supplied in PBS (pH 7.4) containing 50% glycerol, and 0.02% sodium azide.

Storage

Store at -20 °C for one year.

Recommended Dilutions

Western Blotting (WB): 1:1,000-1:5,000

Immunocytochemistry (IC): 1:100-1:1,000

Flow Cytometry (FCM): 1:2,000

SUPPORT

SUPPORT@GENUINBIOTECH.COM
TEL: +1-540-855-7041

ORDERS

SALES@GENUINBIOTECH.COM
FAX: +1-540-855-7041

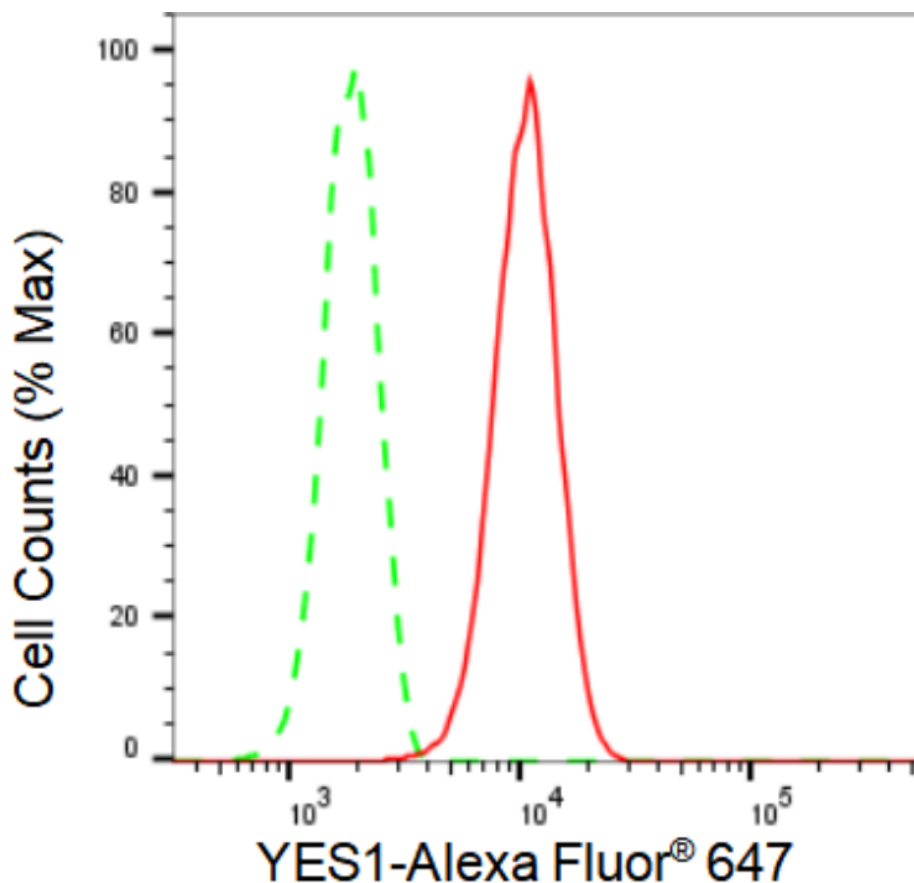
WWW.GENUINBIOTECH.COM

KD-Validated Anti-YES1 Recombinant Rabbit Monoclonal Antibody

PAGE 2

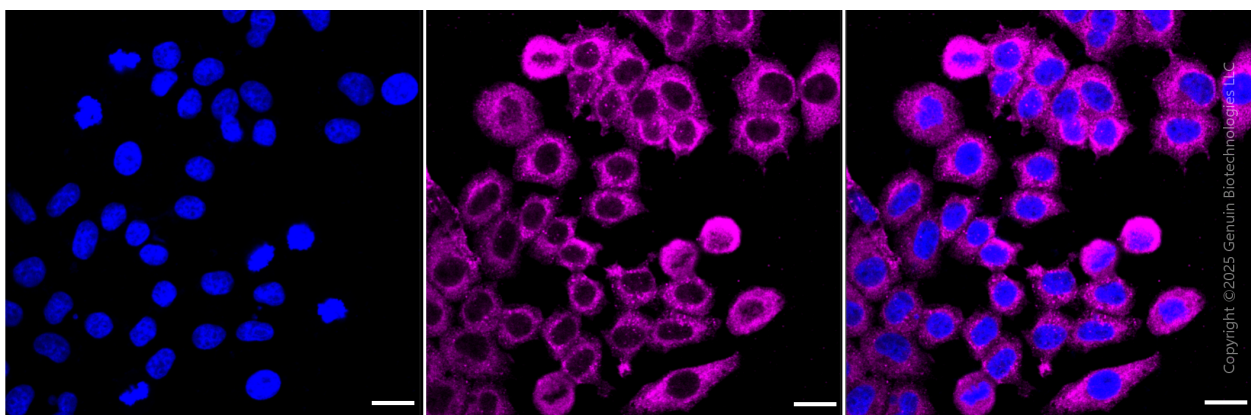
Note: This product is for research use only.

Validation Data



Copyright ©2024 Genuin Biotechnologies LLC

Flow cytometric analysis of YES1 expression in HepG2 cells using YES1 antibody (Cat#61880, 1:2,000). Green, isotype control; red, YES1.



Copyright ©2025 Genuin Biotechnologies LLC

Immunocytochemical staining of HepG2 cells with anti-YES1 antibody (Cat #61880, 1:1,000). Nuclei were stained blue with DAPI; YES1 was stained magenta with Alexa Fluor® 647. Images were taken using Leica stellaris 5. Protein abundance based on laser Intensity and smart gain:

SUPPORT

SUPPORT@GENUINBIOTECH.COM
TEL: +1-540-855-7041

ORDERS

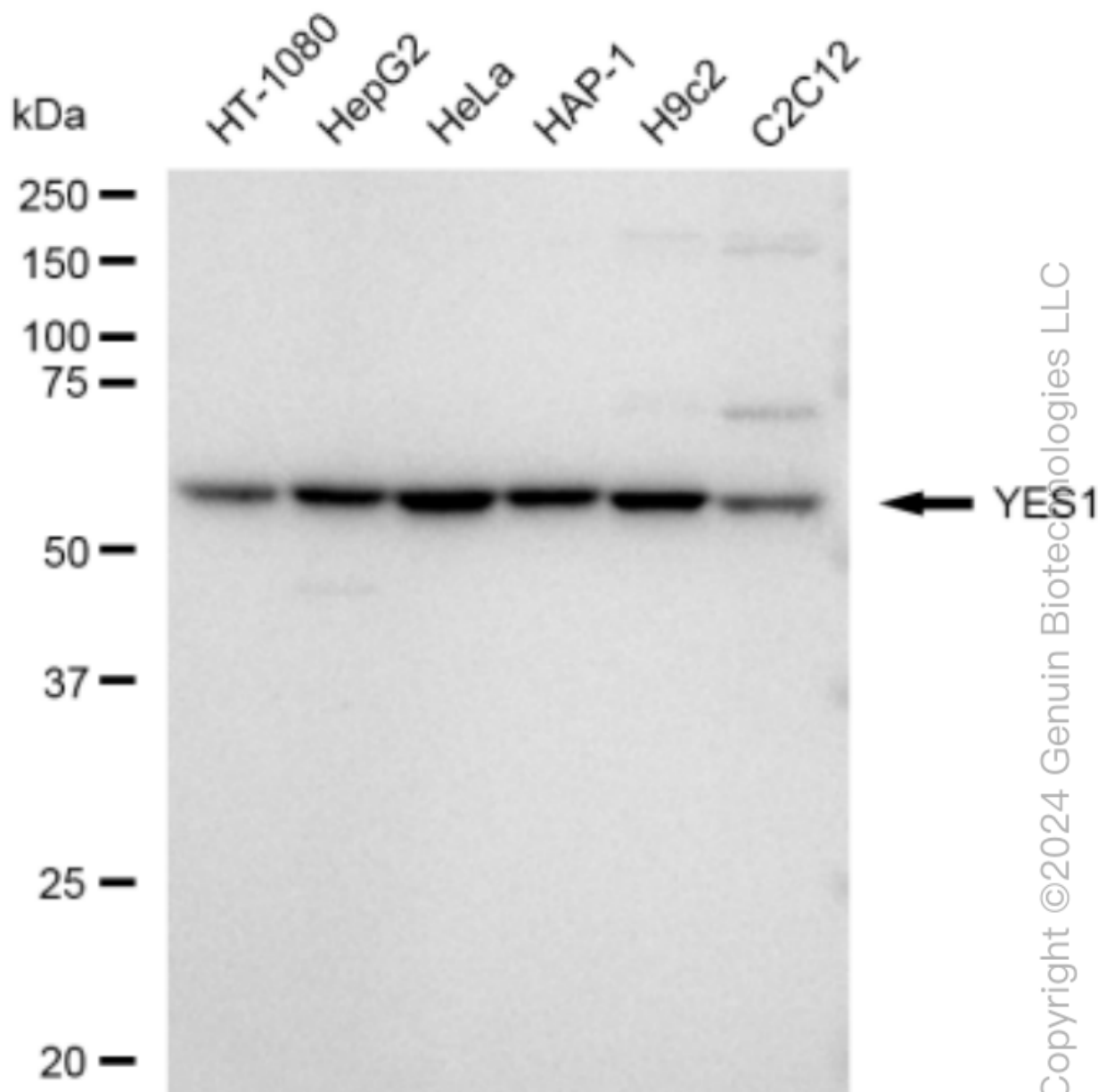
SALES@GENUINBIOTECH.COM
FAX: +1-540-855-7041

WWW.GENUINBIOTECH.COM

KD-Validated Anti-YES1 Recombinant Rabbit Monoclonal Antibody

PAGE 3

High. Scale bar, 20 μ m.



Western blotting analysis using anti-YES1 antibody (Cat#61880). Total cell lysates (30 μ g) from various cell lines were loaded and separated by SDS-PAGE. The blot was incubated with anti-YES1 antibody (Cat#61880, 1:5,000) and HRP-conjugated goat anti-rabbit secondary antibody (Cat#201, 1:20,000) respectively. Image was developed using FeQTM ECL Substrate Kit (Cat#226).

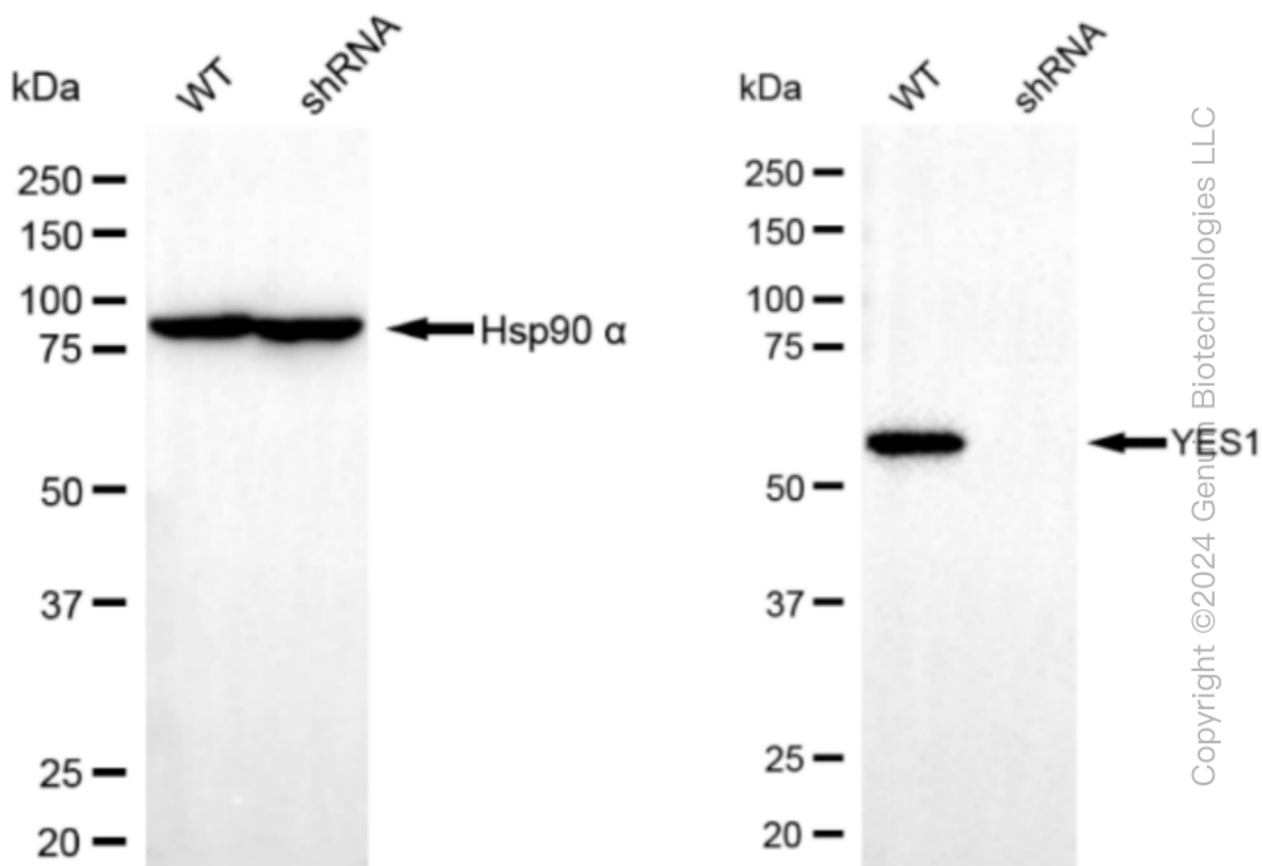
SUPPORT

SUPPORT@GENUINBIOTECH.COM
TEL: +1-540-855-7041

ORDERS

SALES@GENUINBIOTECH.COM
FAX: +1-540-855-7041

WWW.GENUINBIOTECH.COM



Western blotting analysis using anti-YES1 antibody (Cat#61880). YES1 expression in wild type (WT) and YES1 shRNA knockdown (KD) HeLa cells with 30 µg of total cell lysates. Hsp90 α serves as a loading control. The blot was incubated with anti-YES1 antibody (Cat#61880, 1:5,000) and HRP-conjugated goat anti-rabbit secondary antibody (Cat#201, 1:20,000) respectively. Image was developed using FeQ™ ECL Substrate Kit (Cat#226).