

KD-Validated Anti-RALB Mouse Monoclonal Antibody



Catalog #: 61881

Aliases

RALB; RAS Like Proto-Oncogene B; Ras Related GTP Binding Protein B; Ras-Related Protein Ral-B; V-Ral Simian Leukemia Viral Oncogene Homolog B (Ras Related; GTP Binding Protein); V-Ral Simian Leukemia Viral Oncogene Homolog B; RALB Ras Like Proto-Oncogene B; RAS-Like Protein B; EC 3.6.5.2

Background

Gene Name: RALB

NCBI Gene Entry: [5899](#)

UniProt Entry: [P11234](#)

Application Information

Molecular Weight: Predicted, 23 kDa; observed, 25 kDa

Clonality: Mouse monoclonal antibody

Clone ID: 25GB4060

Species Reactivity: Human, mouse, rat

Applications Tested: Western blotting (WB), flow cytometry (FCM), immunocytochemistry (IC)

Immunogen

Recombinant protein of human RALB

Isotype

Mouse IgG1

Storage Buffer

Supplied in PBS (pH 7.4) containing 50% glycerol, and 0.02% sodium azide.

Storage

Store at -20 °C for one year.

Recommended Dilutions

Western Blotting (WB): 1:1,000-1:5,000

Flow Cytometry (FCM): 1:2,000

Immunocytochemistry (IC): 1:100-1:1,000

SUPPORT

SUPPORT@GENUINBIOTECH.COM
TEL: +1-540-855-7041

ORDERS

SALES@GENUINBIOTECH.COM
FAX: +1-540-855-7041

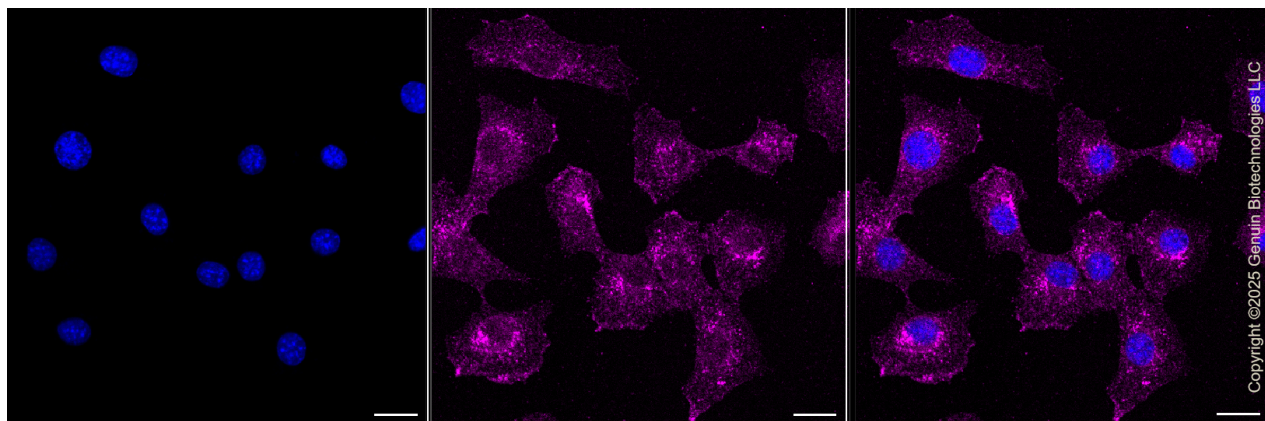
WWW.GENUINBIOTECH.COM

KD-Validated Anti-RALB Mouse Monoclonal Antibody

PAGE 2

Note: This product is for research use only.

Validation Data



Immunocytochemical staining of C2C12 cells with anti-RALB associated protein antibody (Cat#61881, 1:1,000). Nuclei were stained blue with DAPI; RALB associated protein was stained magenta with Alexa Fluor® 647. Images were taken using Leica stellaris 5. Protein abundance based on laser Intensity and smart gain: Medium. Scale bar, 20 μ m.

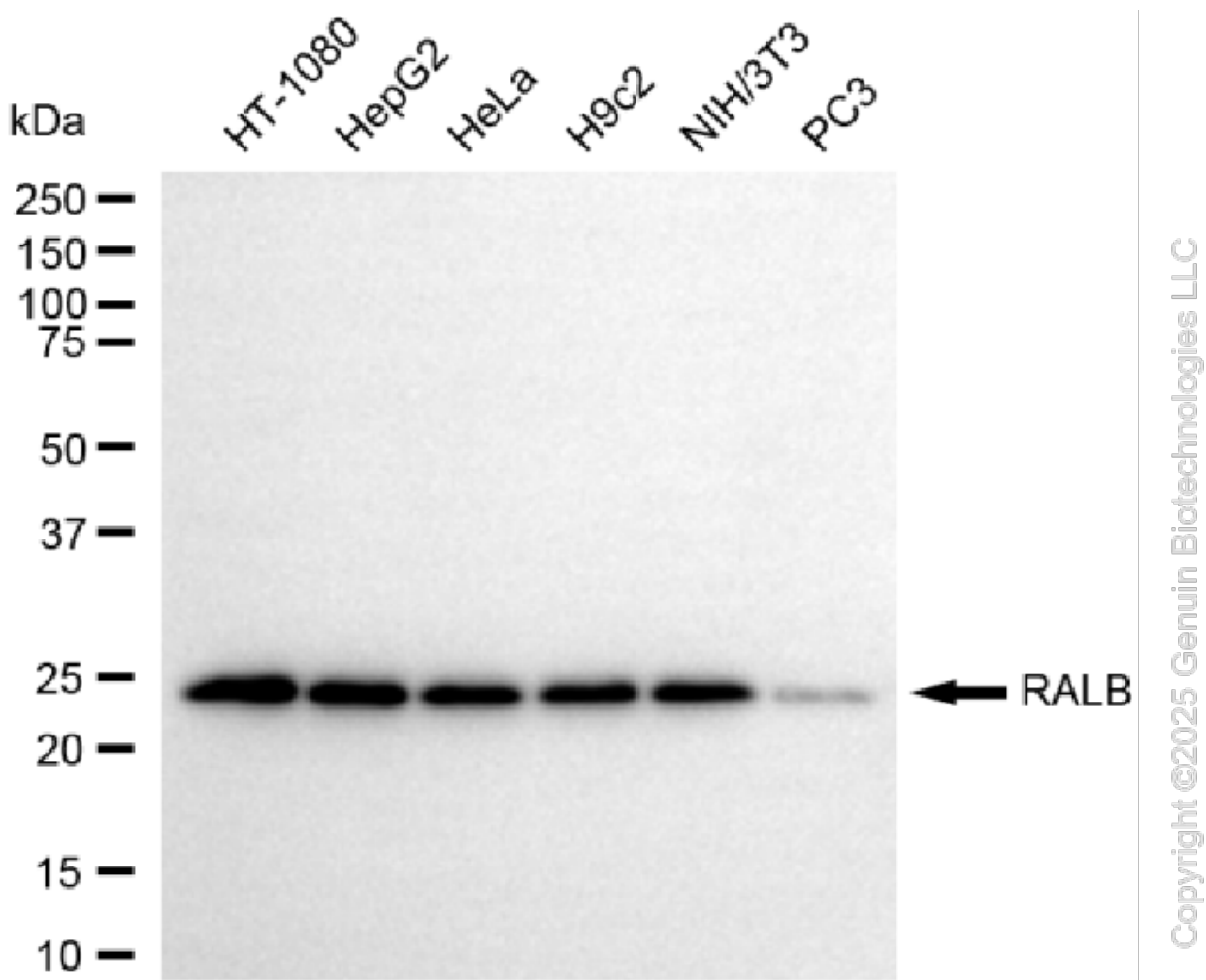
SUPPORT

SUPPORT@GENUINBIOTECH.COM
TEL: +1-540-855-7041

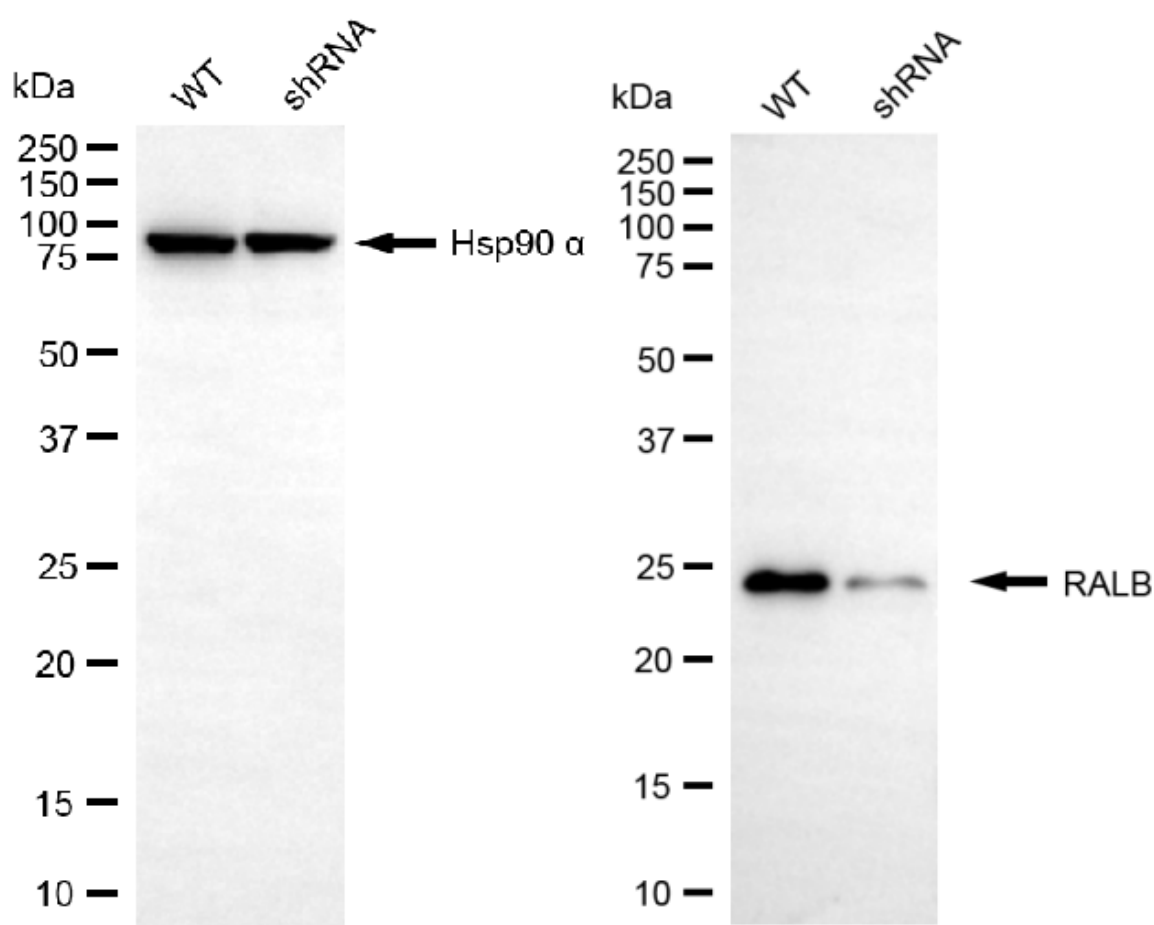
ORDERS

SALES@GENUINBIOTECH.COM
FAX: +1-540-855-7041

WWW.GENUINBIOTECH.COM

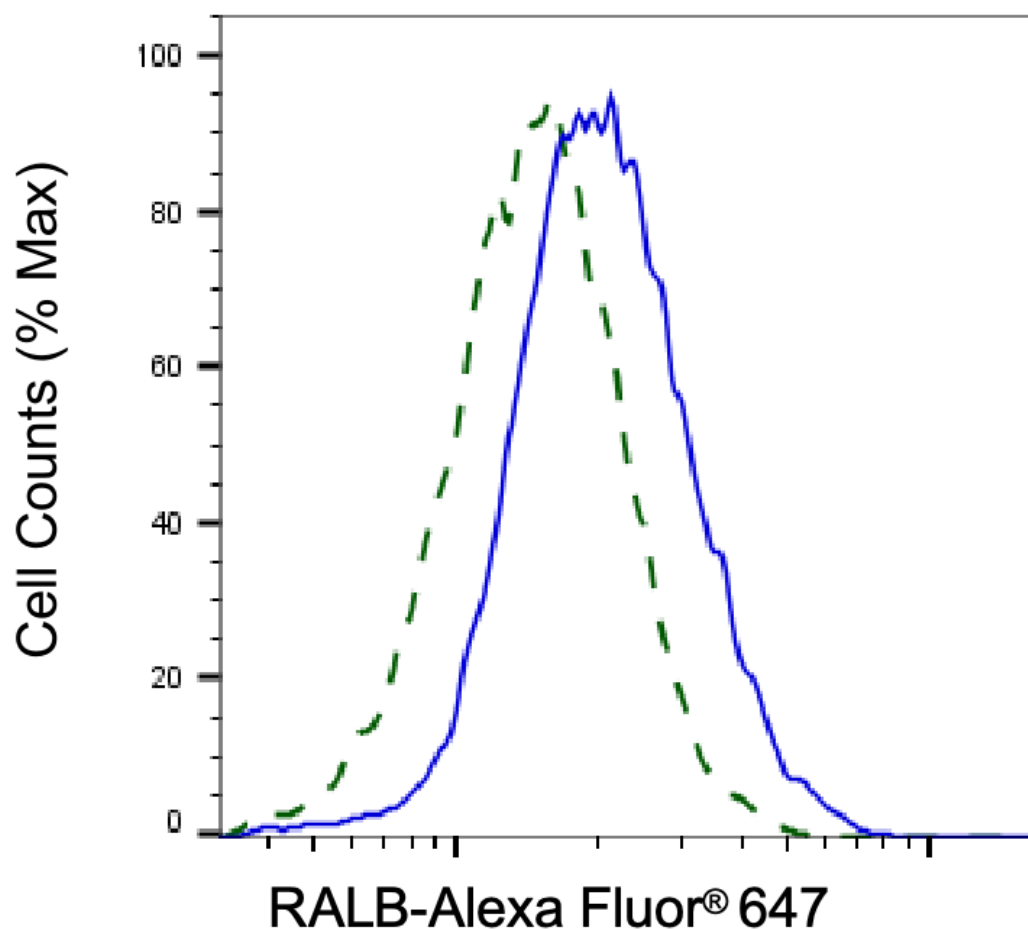


Western blotting analysis using anti-RALB antibody (Cat#61881). Total cell lysates (30 μ g) from various cell lines were loaded and separated by SDS-PAGE. The blot was incubated with anti-RALB antibody (Cat#61881, 1:5,000) and HRP-conjugated goat anti-mouse secondary antibody (Cat#101, 1:20,000) respectively. Image was developed using FeQ™ ECL Substrate Kit (Cat#226).



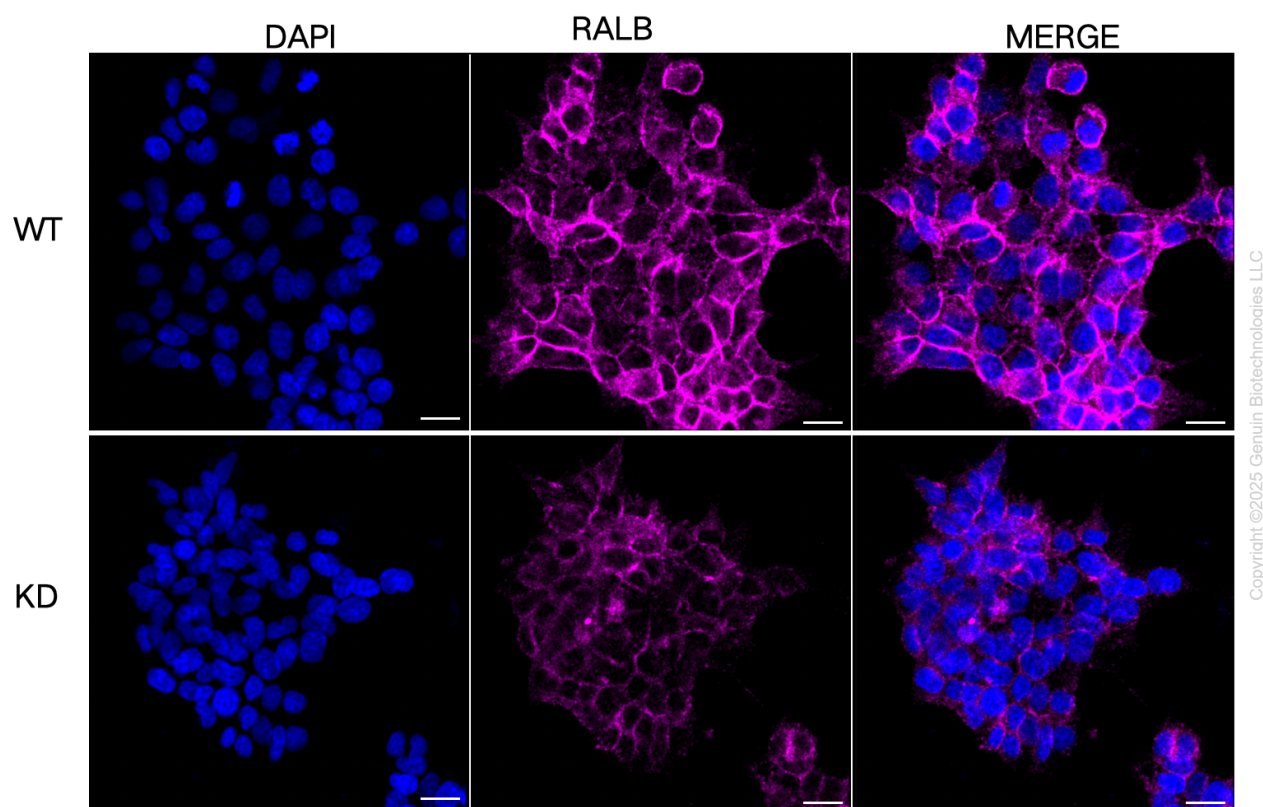
Copyright ©2025 Genuin Biotechnologies LLC

Western blotting analysis using anti-RALB antibody (Cat#61881). RALB expression in wild-type (WT) and RALB shRNA knockdown (KD) HeLa cells with 20 µg of total cell lysates. Hsp90 α serves as a loading control. The blot was incubated with anti-RALB antibody (Cat#61881, 1:5,000) and HRP-conjugated goat anti-mouse secondary antibody (Cat#101, 1:20,000) respectively. Image was developed using NaQ™ ECL Substrate Kit (Cat#716).



Copyright ©2025 Genuin Biotechnologies LLC

Validation of RALB knockdown using flow cytometry. Wild-type(WT, Blue) and knockdown(KD, Green) HeLa cells were stained with anti-RALB antibody (Cat#61881, 1:2,000) and analyzed using BD flow cytometer.



Immunocytochemical staining of HeLa cells using anti-RALB antibody (Cat#61881, 1:1,000), Top panel: wild-type (WT); Bottom panel: RALB shRNA knockdown (KD). Nuclei were stained blue with DAPI; RALB was stained magenta with Alexa Fluor® 647. Scale bar, 20 μ m.