

# KD-Validated Anti-ROS1 Mouse Monoclonal Antibody



**Catalog #: 61882**

## Aliases

ROS1; ROS Proto-Oncogene 1, Receptor Tyrosine Kinase; MCF3; ROS; C-Ros-1; V-Ros Avian UR2 Sarcoma Virus Oncogene Homolog 1; C-Ros Oncogene 1, Receptor Tyrosine Kinase; Proto-Oncogene Tyrosine-Protein Kinase ROS; Proto-Oncogene C-Ros-1; V-Ros UR2 Sarcoma Virus Oncogene Homolog 1 (Avian); ROS Proto-Oncogene 1, Receptor Tyrosine Kinase; Transmembrane Tyrosine-Specific Protein Kinase; Receptor Tyrosine Kinase C-Ros Oncogene 1; C-Ros Receptor Tyrosine Kinase; Proto-Oncogene C-Ros; EC 2.7.10.1

## Background

Gene Name: ROS1

NCBI Gene Entry: [6098](#)

UniProt Entry: [P08922](#)

## Application Information

Molecular Weight: Predicted, 264 kDa; observed, 264 kDa

Clonality: Mouse monoclonal antibody

Clone ID: 25GB4065

Species Reactivity: Human

Applications Tested: Western blotting (WB), flow cytometry (FCM)

## Immunogen

Recombinant protein of human ROS1

## Isotype

Mouse IgG2a

## Storage Buffer

Supplied in PBS (pH 7.4) containing 50% glycerol, and 0.02% sodium azide.

## Storage

Store at -20 °C for one year.

## Recommended Dilutions

Western Blotting (WB): 1:400-1:2,000

Flow Cytometry (FCM): 1:2,000

---

### SUPPORT

SUPPORT@GENUINBIOTECH.COM  
TEL: +1-540-855-7041

### ORDERS

SALES@GENUINBIOTECH.COM  
FAX: +1-540-855-7041

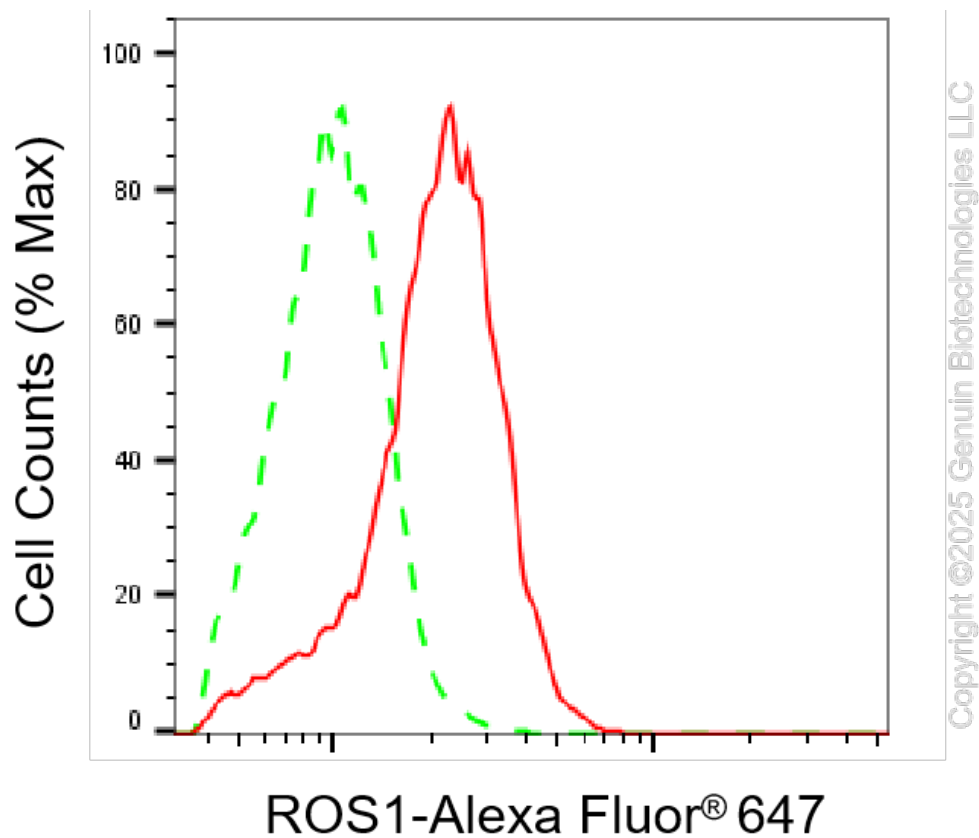
[WWW.GENUINBIOTECH.COM](http://WWW.GENUINBIOTECH.COM)

## KD-Validated Anti-ROS1 Mouse Monoclonal Antibody

PAGE 2

**Note:** This product is for research use only.

### Validation Data



Flow cytometric analysis of ROS1 expression in HAP-1 cells using anti-ROS1 antibody (Cat#61882, 1:2,000). Green, isotype control; red, ROS1.

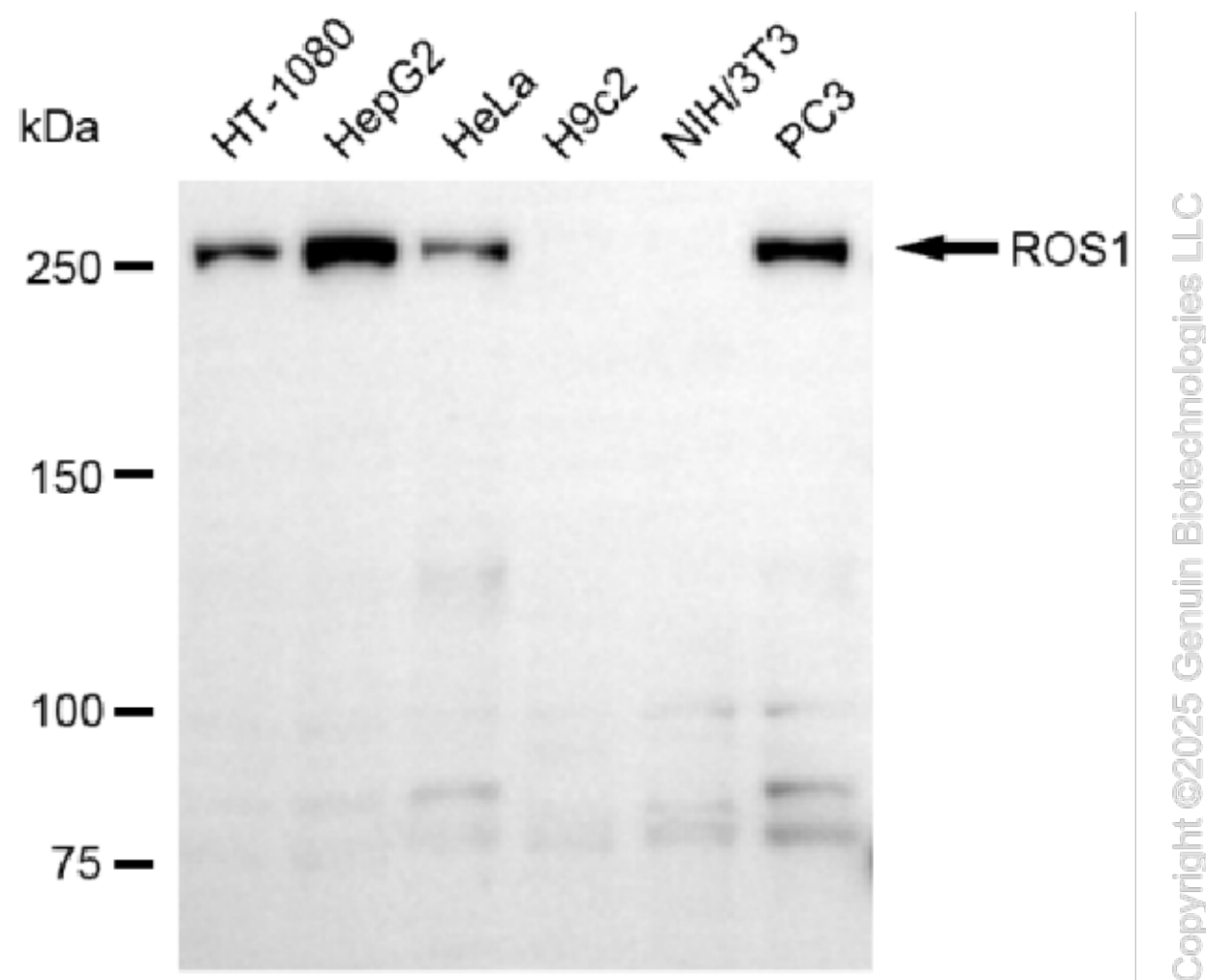
#### SUPPORT

SUPPORT@GENUINBIOTECH.COM  
TEL: +1-540-855-7041

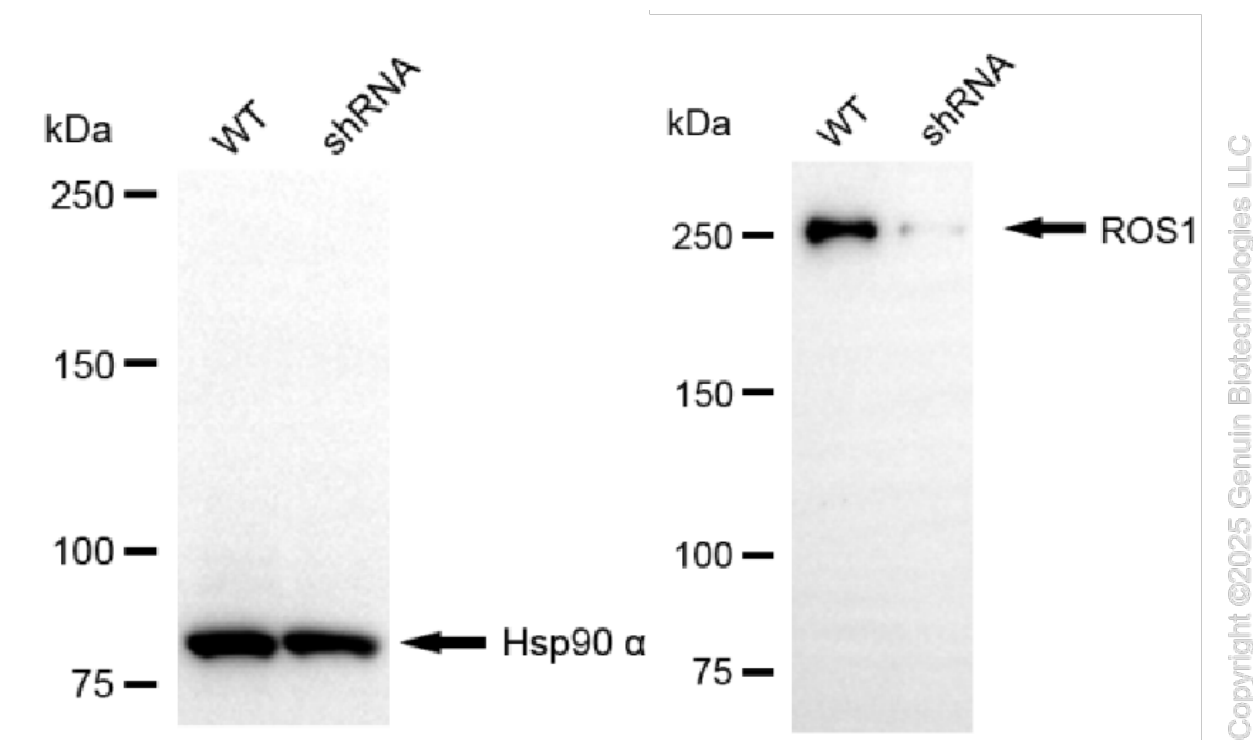
#### ORDERS

SALES@GENUINBIOTECH.COM  
FAX: +1-540-855-7041

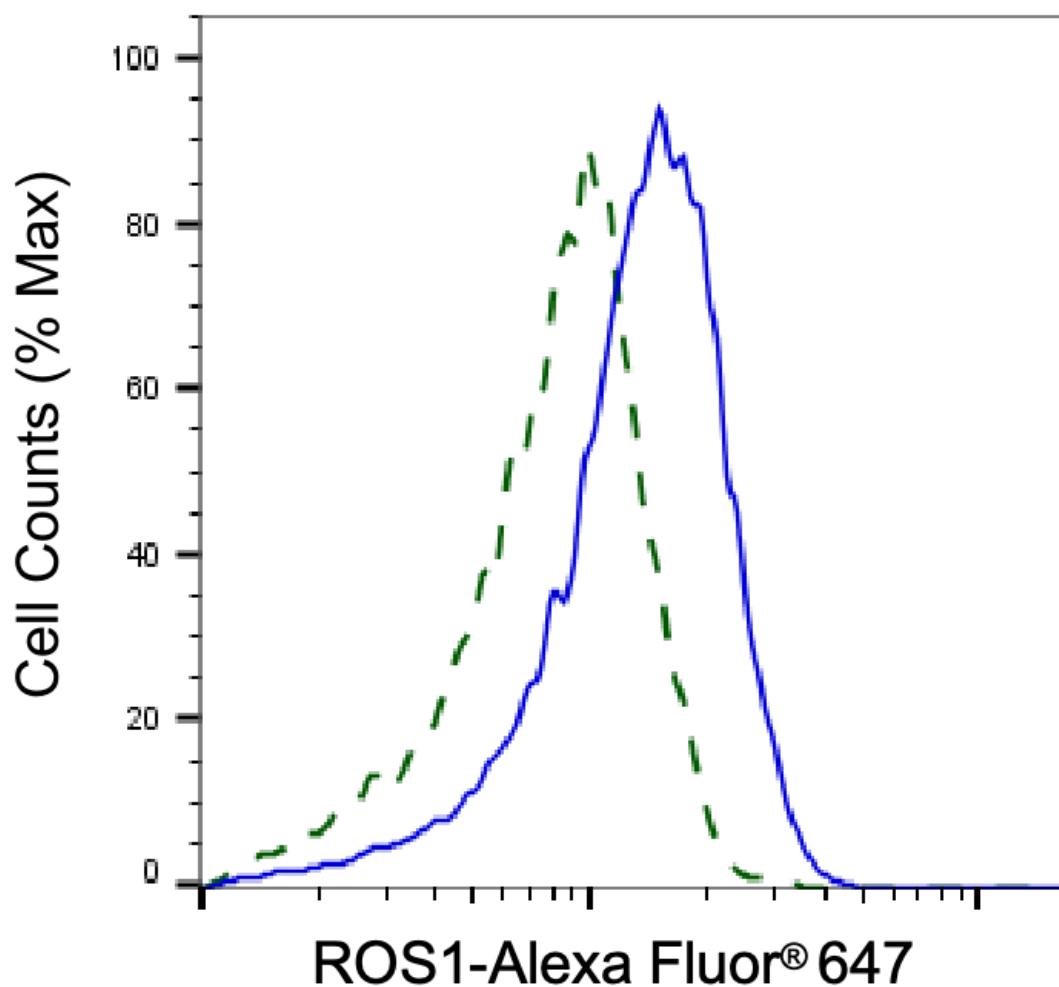
[WWW.GENUINBIOTECH.COM](http://WWW.GENUINBIOTECH.COM)



Western blotting analysis using anti-ROS1 antibody (Cat#61882). Total cell lysates (30  $\mu$ g) from various cell lines were loaded and separated by SDS-PAGE. The blot was incubated with anti-ROS1 antibody (Cat#61882, 1:2,000) and HRP-conjugated goat anti-mouse secondary antibody (Cat#101, 1:20,000) respectively. Image was developed using NaQ™ ECL Substrate Kit (Cat#716).



Western blotting analysis using anti-ROS1 antibody (Cat#61882). ROS1 expression in wild type (WT) and ROS1 shRNA knockdown (KD) HeLa cells with 20 µg of total cell lysates. Hsp90 α serves as a loading control. The blot was incubated with anti-ROS1 antibody (Cat#61882, 1:500) and HRP-conjugated goat anti-mouse secondary antibody (Cat#101, 1:20,000) respectively. Image was developed using NaQ™ ECL Substrate Kit (Cat#716).



Copyright ©2025 Genuin Biotechnologies LLC

Validation of ROS1 knockdown using flow cytometry. Wild-type(WT, Blue) and knockdown(KD, Green) HeLa cells were stained with anti-ROS1 antibody (Cat#61882, 1:2,000) and analyzed using BD flow cytometer.