

# KD-Validated Anti-CCDC98 Recombinant Rabbit Monoclonal Antibody



**Catalog #: 61883**

## Aliases

ABRAXAS1; Antibodyraxas 1, BRCA1 A Complex Subunit 2; ABRA1; FAM175A; CCDC98; Family With Sequence Similarity 175 Member A; BRCA1-A Complex Subunit Antibodyraxas 1; Coiled-Coil Domain Containing 98; Antibodyraxas Protein; FLJ13614; ABRAXAS; Family With Sequence Similarity 175, Member A; Coiled-Coil Domain-Containing Protein 98; Protein FAM175A

## Background

Gene Name: ABRAXAS1

NCBI Gene Entry: [84142](#)

UniProt Entry: [Q6UWZ7](#)

## Application Information

Molecular Weight: Predicted, 47 kDa, observed, 50 kDa

Clonality: Rabbit monoclonal antibody

Clone ID: 23GB4760

Species Reactivity: Human

Applications Tested: Western blotting (WB), flow cytometry (FCM), immunocytochemistry (IC)

## Immunogen

A synthesized peptide derived from human CCDC98

## Isotype

Rabbit IgG

## Storage Buffer

Supplied in PBS (pH 7.4) containing 50% glycerol, and 0.02% sodium azide.

## Storage

Store at -20 °C for one year.

## Recommended Dilutions

Western Blotting (WB): 1:1,000-1:5,000

Flow Cytometry (FCM): 1:2,000

Immunocytochemistry (IC): 1:100-1:1,000

---

### SUPPORT

SUPPORT@GENUINBIOTECH.COM  
TEL: +1-540-855-7041

### ORDERS

SALES@GENUINBIOTECH.COM  
FAX: +1-540-855-7041

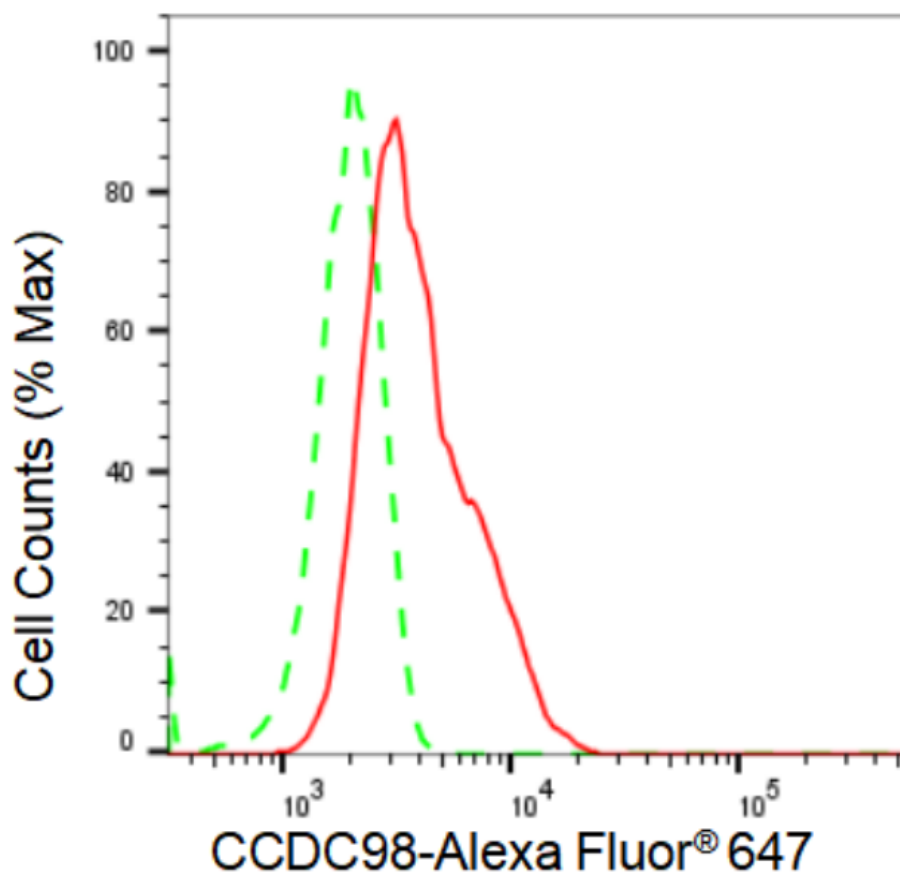
[WWW.GENUINBIOTECH.COM](http://WWW.GENUINBIOTECH.COM)

# KD-Validated Anti-CCDC98 Recombinant Rabbit Monoclonal Antibody

PAGE 2

**Note:** This product is for research use only.

## Validation Data



Copyright ©2024 Genuin Biotechnologies LLC

Flow cytometric analysis of CCDC98 expression in HT-1080 cells using CCDC98 antibody (Cat#61883, 1:2,000). Green, isotype control; red, CCDC98.

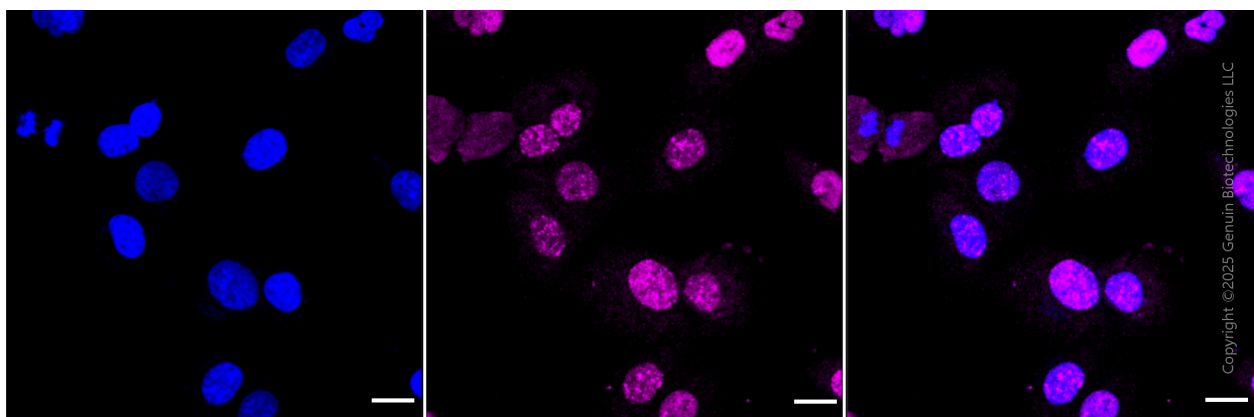
### SUPPORT

SUPPORT@GENUINBIOTECH.COM  
TEL: +1-540-855-7041

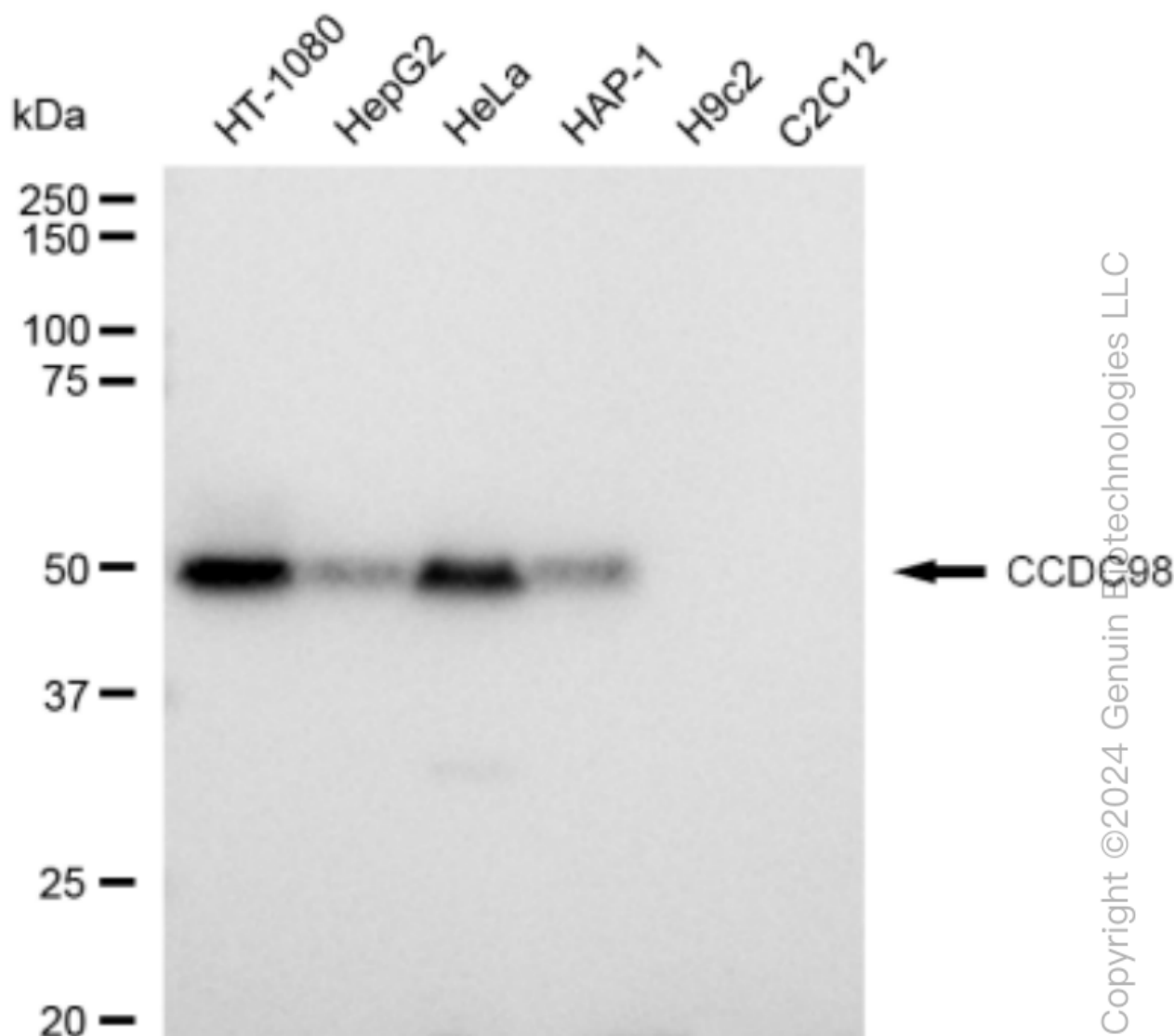
### ORDERS

SALES@GENUINBIOTECH.COM  
FAX: +1-540-855-7041

[WWW.GENUINBIOTECH.COM](http://WWW.GENUINBIOTECH.COM)



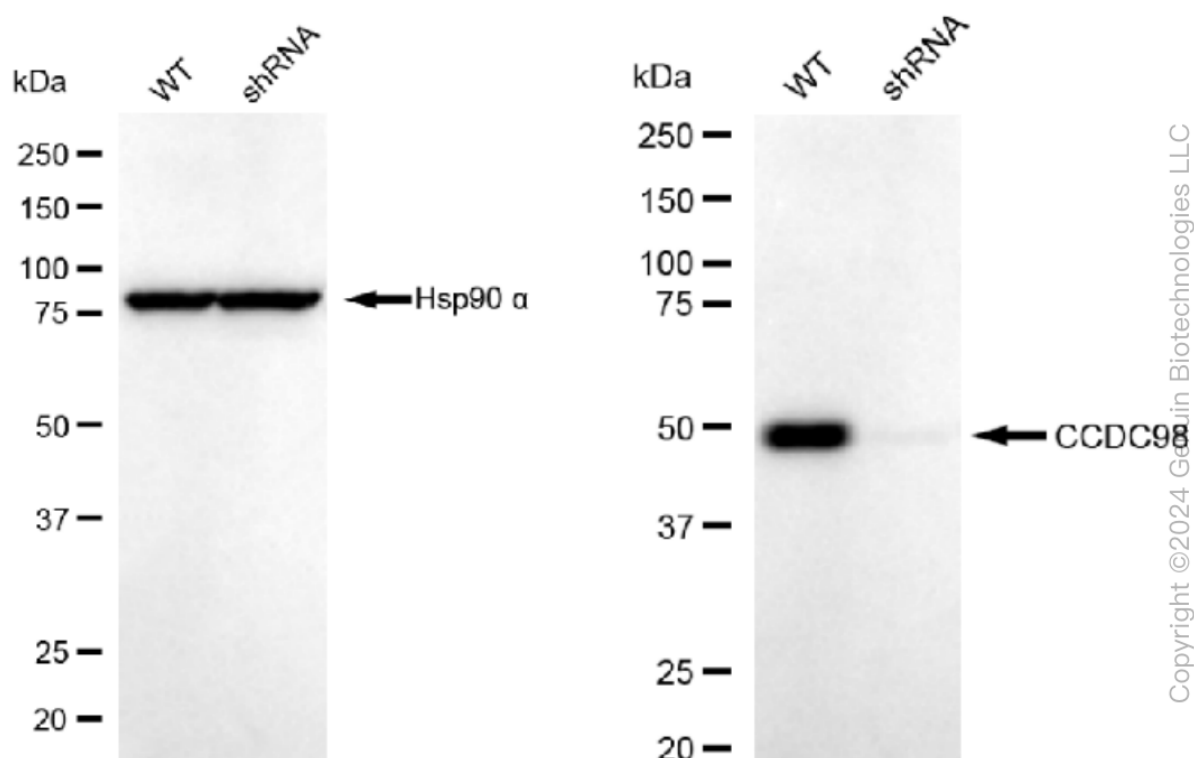
Immunocytochemical staining of HT-1080 cells with anti-CCDC98 antibody (Cat #61883, 1:1,000) . Nuclei were stained blue with DAPI; CCDC98 was stained magenta with Alexa Fluor® 647. Images were taken using Leica stellaris 5. Protein abundance based on laser Intensity and smart gain: Medium. Scale bar, 20 μm.



## KD-Validated Anti-CCDC98 Recombinant Rabbit Monoclonal Antibody

PAGE 4

Western blotting analysis using anti-CCDC98 antibody (Cat#61883). Total cell lysates (30 µg) from various cell lines were loaded and separated by SDS-PAGE. The blot was incubated with anti-CCDC98 antibody (Cat#61883, 1:5,000) and HRP-conjugated goat anti-rabbit secondary antibody (Cat#201, 1:20,000) respectively. Image was developed using FeQ™ ECL Substrate Kit (Cat#226).



Western blotting analysis using anti-CCDC98 antibody (Cat#61883). CCDC98 expression in wild type (WT) and CCDC98 shRNA knockdown (KD) HT-1080 cells with 30 µg of total cell lysates. Hsp90 α serves as a loading control. The blot was incubated with anti-CCDC98 antibody (Cat#61883, 1:5,000) and HRP-conjugated goat anti-rabbit secondary antibody (Cat#201, 1:20,000) respectively. Image was developed using FeQ™ ECL Substrate Kit (Cat#226).

### SUPPORT

SUPPORT@GENUINBIOTECH.COM  
TEL: +1-540-855-7041

### ORDERS

SALES@GENUINBIOTECH.COM  
FAX: +1-540-855-7041

[WWW.GENUINBIOTECH.COM](http://WWW.GENUINBIOTECH.COM)