

KD-Validated Anti-RBMX Rabbit Monoclonal Antibody



Catalog #: 61886

Aliases

RBMX; RNA Binding Motif Protein X-Linked; Heterogeneous Nuclear Ribonucleoprotein G; HnRNP-G; HNRNPG; RNMX; RNA-Binding Motif Protein, X Chromosome; Glycoprotein P43; HnRNP G; RBMXP1; HNRPG; RNA Binding Motif Protein, X Chromosome; MRXS11; RBMXRT; MRXSG; MRXSH

Background

Gene Name: RBMX

NCBI Gene Entry: [27316](#)

UniProt Entry: [P38159](#)

Application Information

Molecular Weight: Predicted, 42 kDa; observed, 39 kDa

Clonality: Rabbit monoclonal antibody

Clone ID: 25GB4075

Species Reactivity: Human, mouse, rat

Applications Tested: Western blotting (WB), flow cytometry (FCM), immunocytochemistry (IC)

Immunogen

A synthesized peptide derived from human hnRNP G

Isotype

Rabbit IgG

Storage Buffer

Supplied in PBS (pH 7.4) containing 50% glycerol, and 0.02% sodium azide.

Storage

Store at -20 °C for one year.

Recommended Dilutions

Western Blotting (WB): 1:1,000-1:5,000

Flow Cytometry (FCM): 1:2,000

Immunocytochemistry (IC): 1:100-1:1,000

SUPPORT

SUPPORT@GENUINBIOTECH.COM
TEL: +1-540-855-7041

ORDERS

SALES@GENUINBIOTECH.COM
FAX: +1-540-855-7041

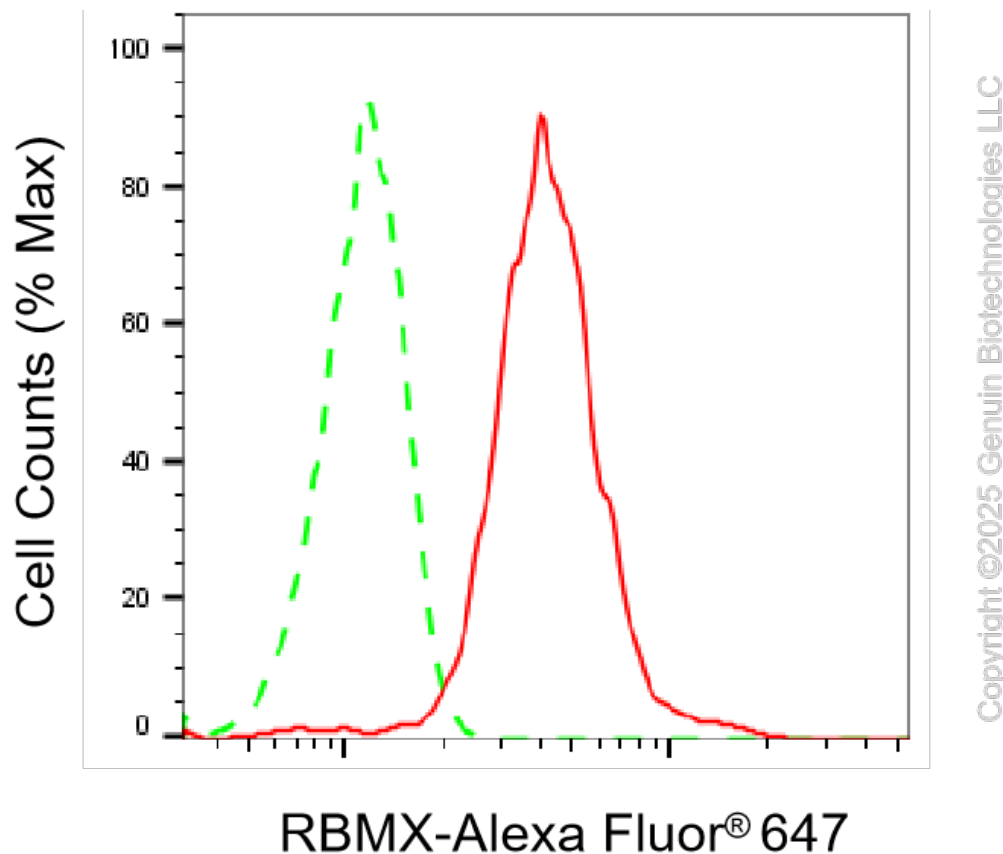
WWW.GENUINBIOTECH.COM

KD-Validated Anti-RBMX Rabbit Monoclonal Antibody

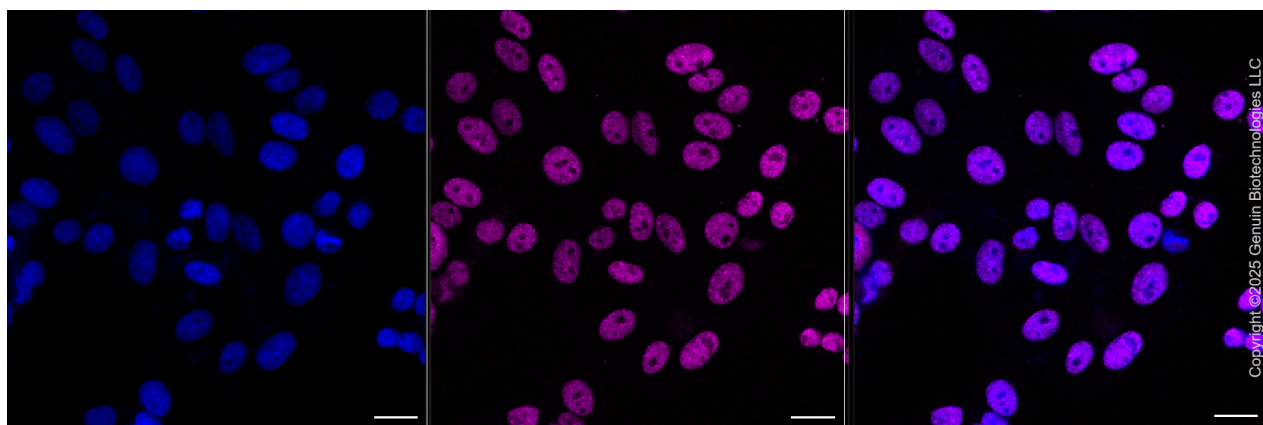
PAGE 2

Note: This product is for research use only.

Validation Data



Flow cytometric analysis of RBMX expression in HepG2 cells using anti-RBMX antibody (Cat#61886, 1:2,000). Green, isotype control; red, RBMX.



Immunocytochemical staining of HepG2 cells with anti-RBMX antibody (Cat#61886, 1:1,000). Nuclei were stained blue with DAPI; RBMX was stained magenta with Alexa Fluor® 647. Images were taken using Leica stellaris 5. Protein abundance based on laser Intensity and smart gain: Medium. Scale bar, 20 μ m.

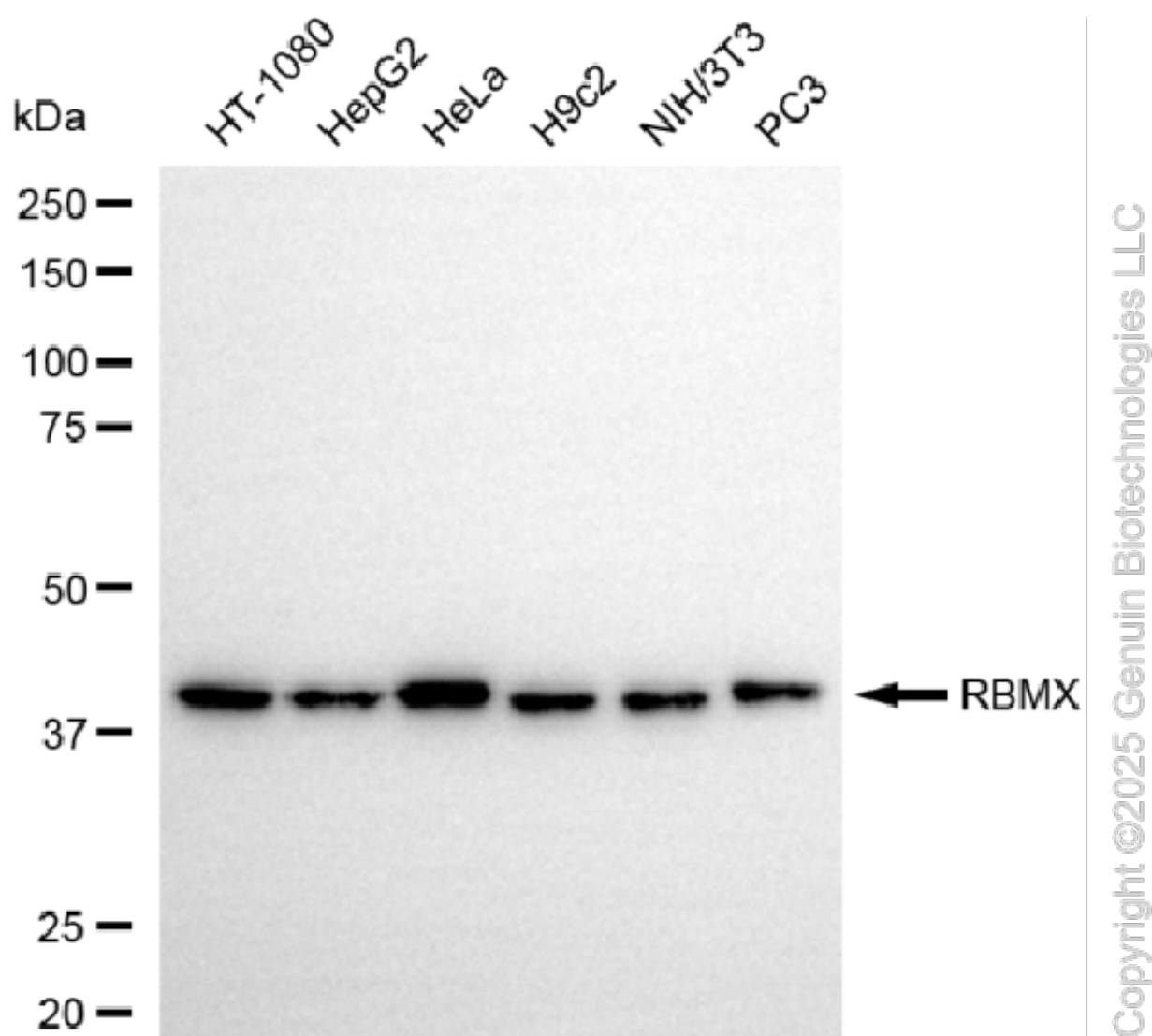
SUPPORT

SUPPORT@GENUINBIOTECH.COM
TEL: +1-540-855-7041

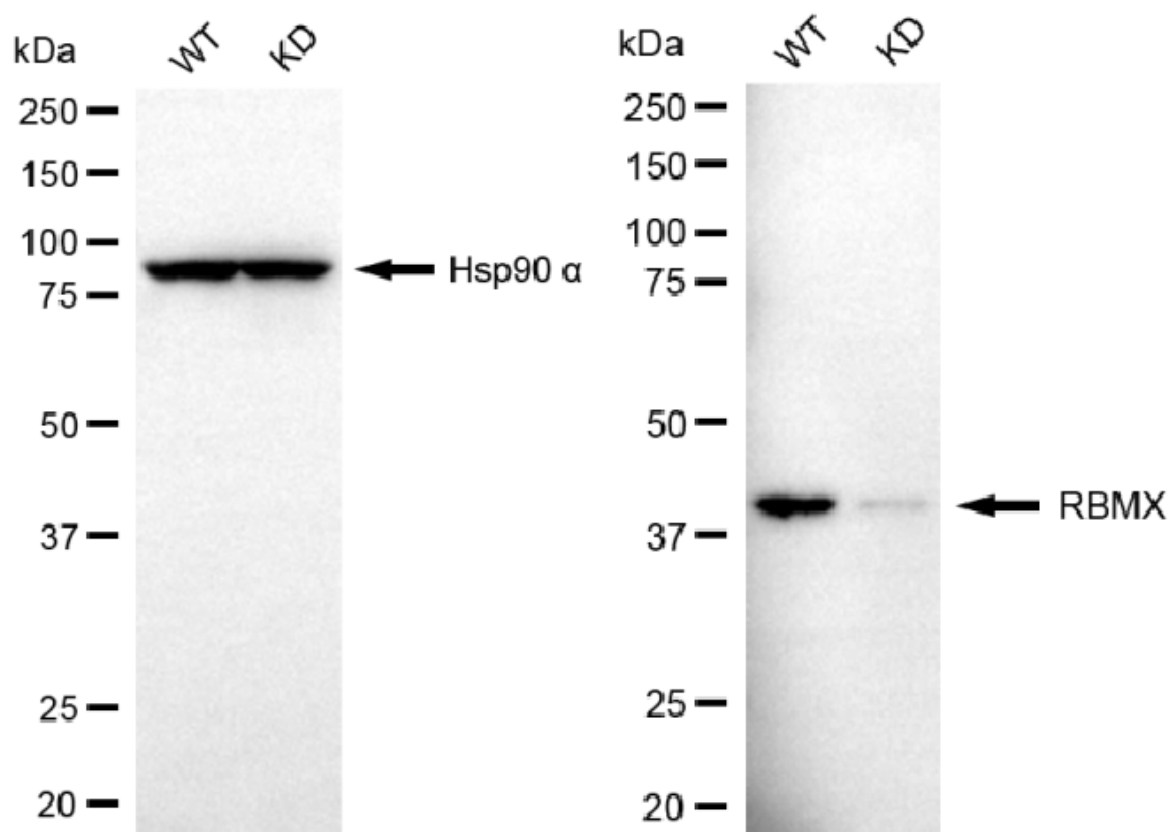
ORDERS

SALES@GENUINBIOTECH.COM
FAX: +1-540-855-7041

WWW.GENUINBIOTECH.COM



Western blotting analysis using anti-RBMX antibody (Cat#61886). Total cell lysates (30 µg) from various cell lines were loaded and separated by SDS-PAGE. The blot was incubated with anti-RBMX antibody (Cat#61886, 1:5,000) and HRP-conjugated goat anti-rabbit secondary antibody (Cat#201, 1:20,000) respectively. Image was developed using NaQ™ ECL Substrate Kit (Cat#716).



Copyright ©2025 Genuin Biotechnologies LLC

Western blotting analysis using anti-RBMX antibody (Cat#61886). RBMX expression in wild-type (WT) and RBMX knockdown (KD) HT-1080 cells with 20 µg of total cell lysates. Hsp90 α serves as a loading control. The blot was incubated with anti-RBMX antibody (Cat#61886, 1:5,000) and HRP-conjugated goat anti-rabbit secondary antibody (Cat#201, 1:20,000) respectively. Image was developed using FeQ™ ECL Substrate Kit (Cat#226).