

KD-Validated Anti-NDUFAF5 Rabbit Monoclonal Antibody



Catalog #: 61887

Aliases

NDUFAF5; NADH:Ubiquinone Oxidoreductase Complex Assembly Factor 5; DJ842G6.1; C20orf7; NADH Dehydrogenase [Ubiquinone] 1 Alpha Subcomplex Assembly Factor 5; NADH Dehydrogenase (Ubiquinone) Complex I, Assembly Factor 5; Arginine-Hydroxylase NDUFAF5, Mitochondrial; Putative Methyltransferase NDUFAF5; Probable Methyltransferase C20orf7, Mitochondrial; Chromosome 20 Open Reading Frame 7; BA526K24.2; EC 1.-.-.- ; EC 2.1.1.- ; MC1DN16

Background

Gene Name: NDUFAF5

NCBI Gene Entry: [79133](#)

UniProt Entry: [Q5TEU4](#)

Application Information

Molecular Weight: Predicted, 39 kDa; observed, 39 kDa

Clonality: Rabbit monoclonal antibody

Clone ID: 25GB4085

Species Reactivity: Human, mouse

Applications Tested: Western blotting (WB), flow cytometry (FCM), immunocytochemistry (IC)

Immunogen

Recombinant protein of human NDUFAF5

Isotype

Rabbit IgG

Storage Buffer

Supplied in PBS (pH 7.4) containing 50% glycerol, and 0.02% sodium azide.

Storage

Store at -20 °C for one year.

Recommended Dilutions

Western Blotting (WB): 1:1,000-1:5,000

Flow Cytometry (FCM): 1:2,000

Immunocytochemistry (IC): 1:100-1:1,000

SUPPORT

SUPPORT@GENUINBIOTECH.COM
TEL: +1-540-855-7041

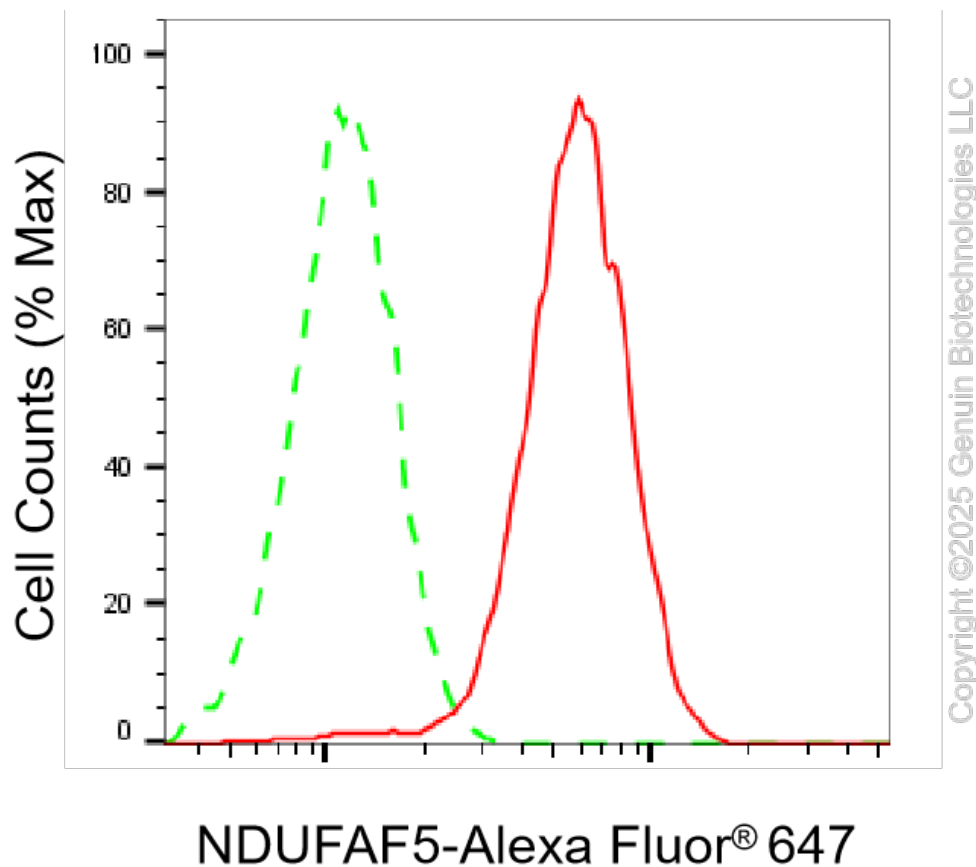
ORDERS

SALES@GENUINBIOTECH.COM
FAX: +1-540-855-7041

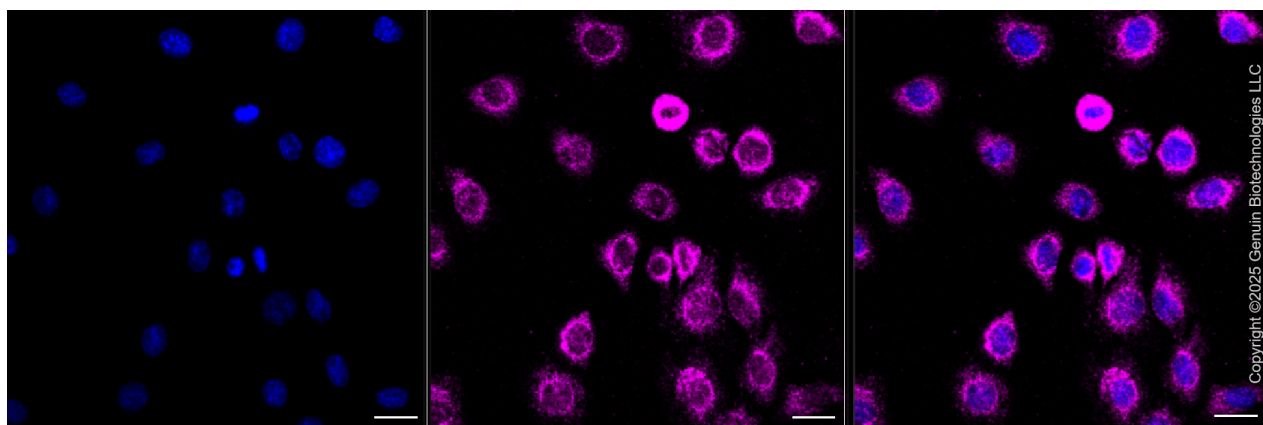
WWW.GENUINBIOTECH.COM

Note: This product is for research use only.

Validation Data



Flow cytometric analysis of NDUFAF5 expression in C2C12 cells using anti-NDUFAF5 antibody (Cat#61887, 1:2,000). Green, isotype control; red, NDUFAF5.



Immunocytochemical staining of C2C12 cells with anti-NDUFAF5 antibody (Cat#61887, 1:1,000). Nuclei were stained blue with DAPI; NDUFAF5 was stained magenta with Alexa Fluor® 647. Images were taken using Leica stellaris 5. Protein abundance based on laser intensity

SUPPORT

SUPPORT@GENUINBIOTECH.COM
TEL: +1-540-855-7041

ORDERS

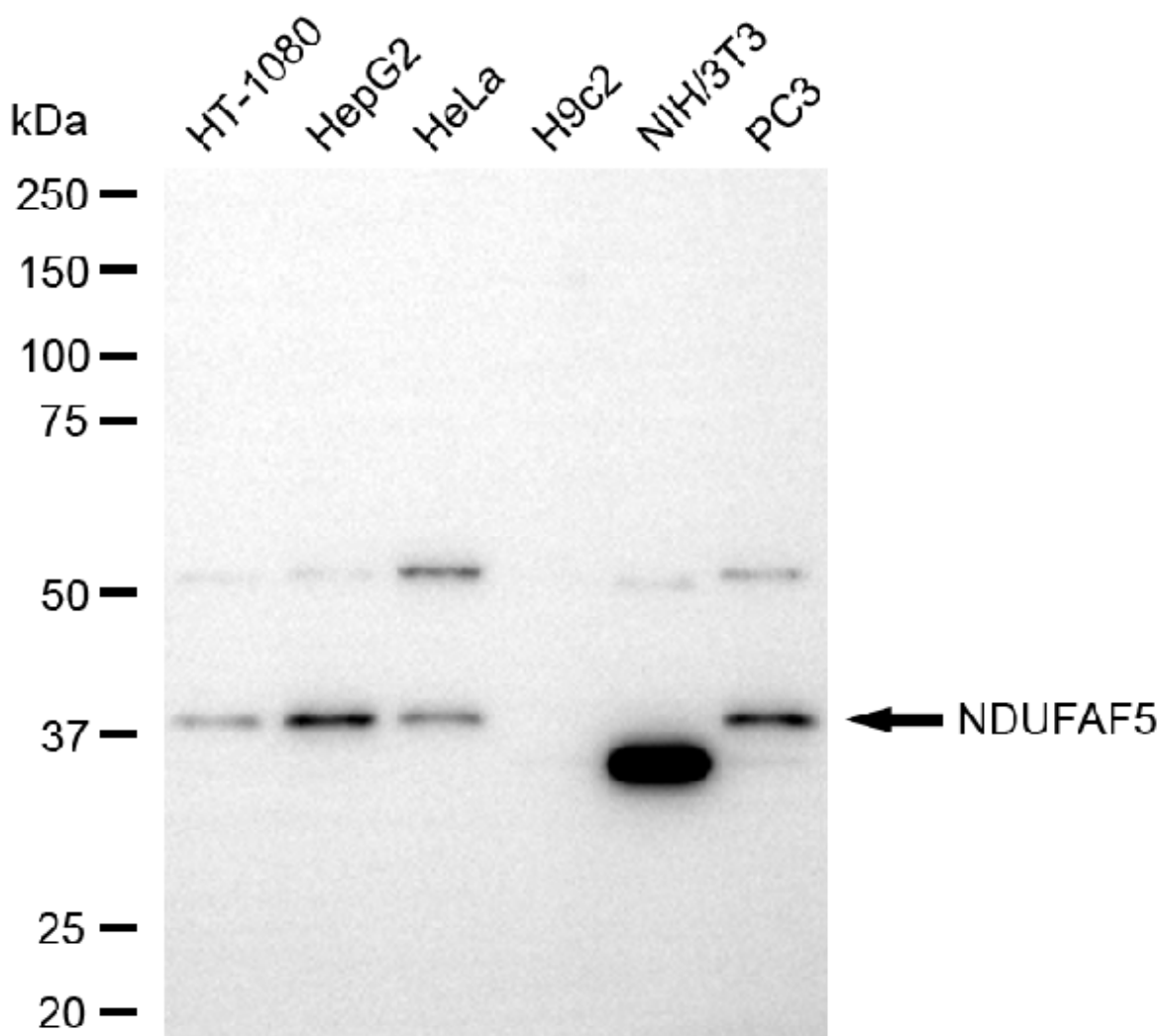
SALES@GENUINBIOTECH.COM
FAX: +1-540-855-7041

WWW.GENUINBIOTECH.COM

KD-Validated Anti-NDUFAF5 Rabbit Monoclonal Antibody

PAGE 3

and smart gain: Medium. Scale bar, 20 μ m.



Western blotting analysis using anti-NDUFAF5 antibody (Cat#61887). Total cell lysates (30 μ g) from various cell lines were loaded and separated by SDS-PAGE. The blot was incubated with anti-NDUFAF5 antibody (Cat#61887, 1:5,000) and HRP-conjugated goat anti-rabbit secondary antibody (Cat#201, 1:20,000) respectively. Image was developed using NaQTM ECL Substrate Kit (Cat#716).

SUPPORT

SUPPORT@GENUINBIOTECH.COM
TEL: +1-540-855-7041

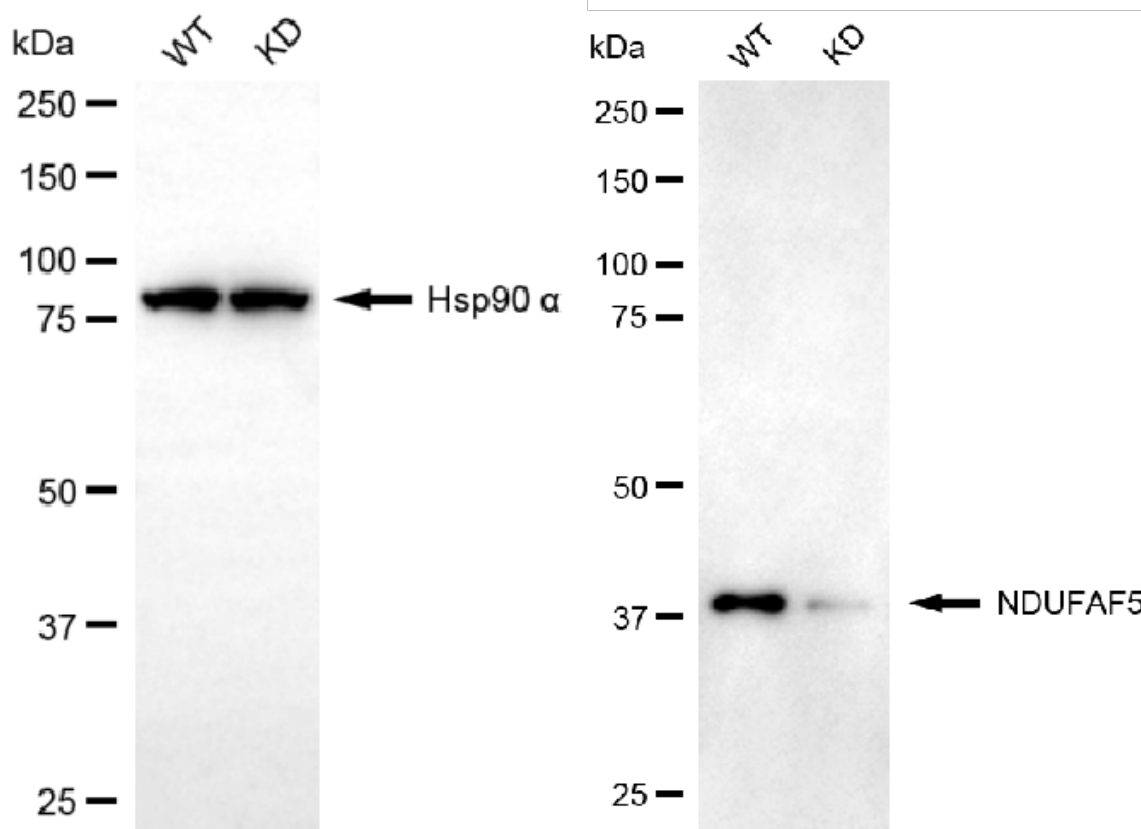
ORDERS

SALES@GENUINBIOTECH.COM
FAX: +1-540-855-7041

WWW.GENUINBIOTECH.COM

KD-Validated Anti-NDUFAF5 Rabbit Monoclonal Antibody

PAGE 4



Copyright ©2025 Genuin Biotechnologies LLC

Western blotting analysis using anti-NDUFAF5 antibody (Cat#61887). NDUFAF5 expression in wild-type (WT) and NDUFAF5 knockdown (KD) 293T cells with 20 µg of total cell lysates. Hsp90 α serves as a loading control. The blot was incubated with anti-NDUFAF5 antibody (Cat#61887, 1:5,000) and HRP-conjugated goat anti-rabbit secondary antibody (Cat#201, 1:20,000) respectively. Image was developed using FeQ™ ECL Substrate Kit (Cat#226).

SUPPORT

SUPPORT@GENUINBIOTECH.COM
TEL: +1-540-855-7041

ORDERS

SALES@GENUINBIOTECH.COM
FAX: +1-540-855-7041

WWW.GENUINBIOTECH.COM