

KD-Validated Anti-REEP2 Rabbit Monoclonal Antibody



Catalog #: 61889

Aliases

REEP2; Receptor Accessory Protein 2; SGC32445; C5orf19; SPG72; Yip2d; Receptor Expression-Enhancing Protein 2; Chromosome 5 Open Reading Frame 19; SPG72A; SPG72B

Background

Gene Name: REEP2

NCBI Gene Entry: [51308](#)

UniProt Entry: [Q9BRK0](#)

Application Information

Molecular Weight: Predicted, 28 kDa; observed, 28 kDa

Clonality: Rabbit monoclonal antibody

Clone ID: 25GB4095

Species Reactivity: Human

Applications Tested: Western blotting (WB), flow cytometry (FCM)

Immunogen

A synthesized peptide derived from human REEP2

Isotype

Rabbit IgG

Storage Buffer

Supplied in PBS (pH 7.4) containing 50% glycerol, and 0.02% sodium azide.

Storage

Store at -20 °C for one year.

Recommended Dilutions

Western Blotting (WB): 1:1,000-1:5,000

Flow Cytometry (FCM): 1:2,000

Note: This product is for research use only.

Validation Data

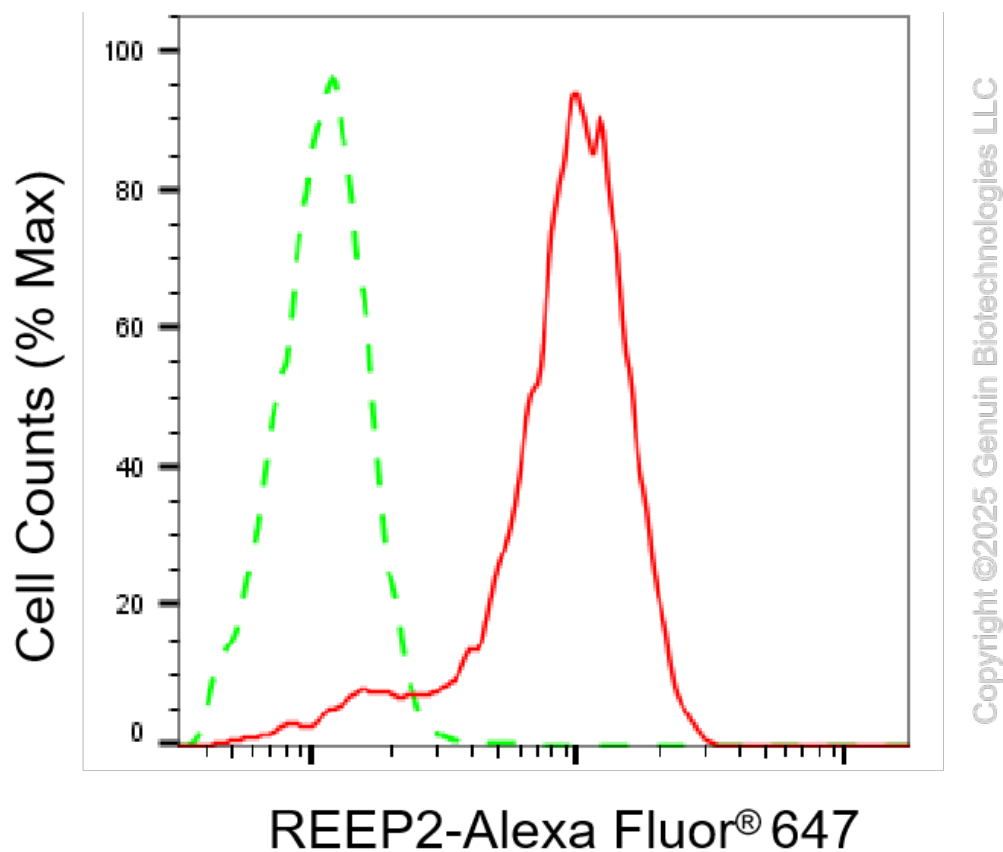
SUPPORT

SUPPORT@GENUINBIOTECH.COM
TEL: +1-540-855-7041

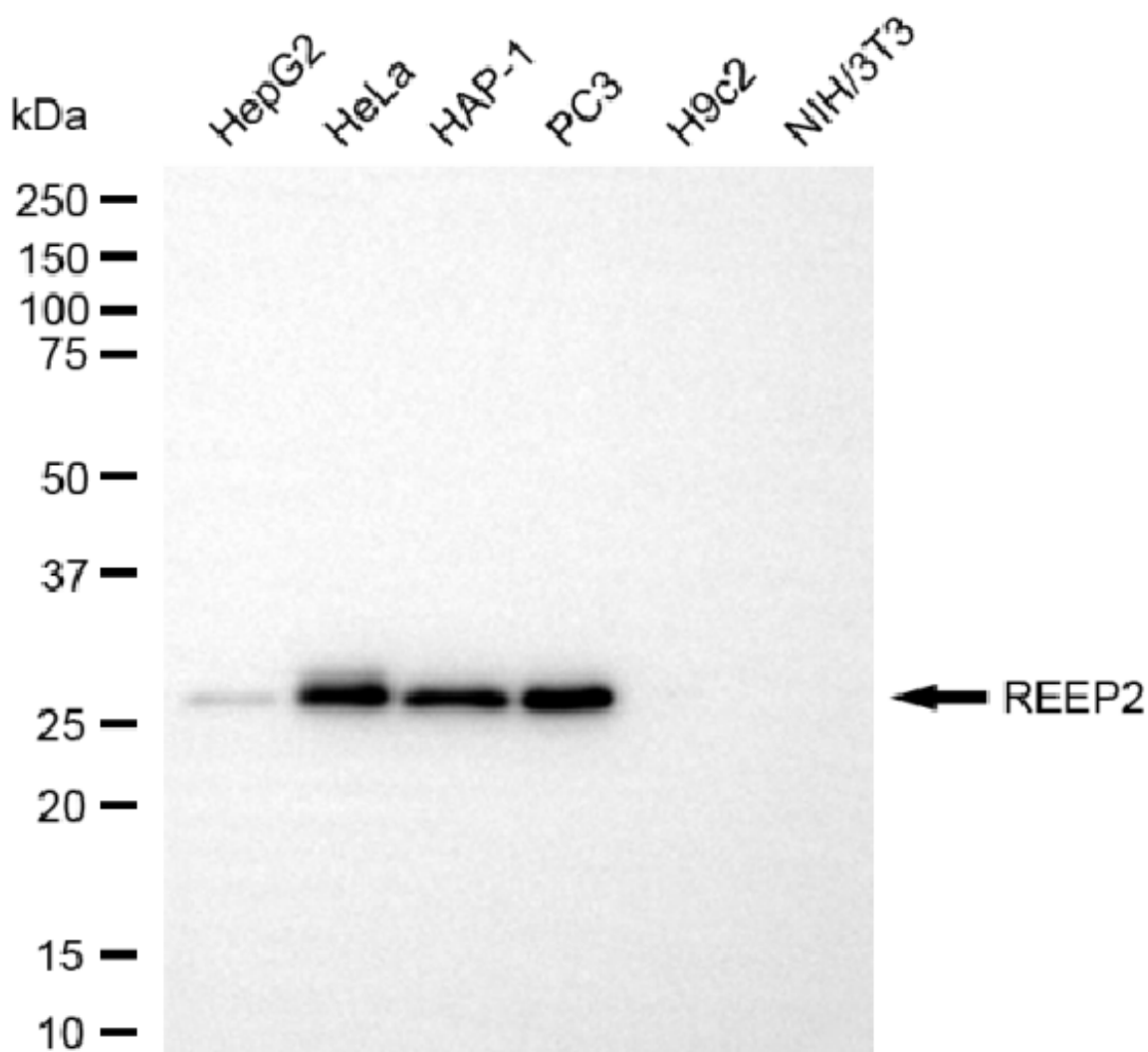
ORDERS

SALES@GENUINBIOTECH.COM
FAX: +1-540-855-7041

WWW.GENUINBIOTECH.COM

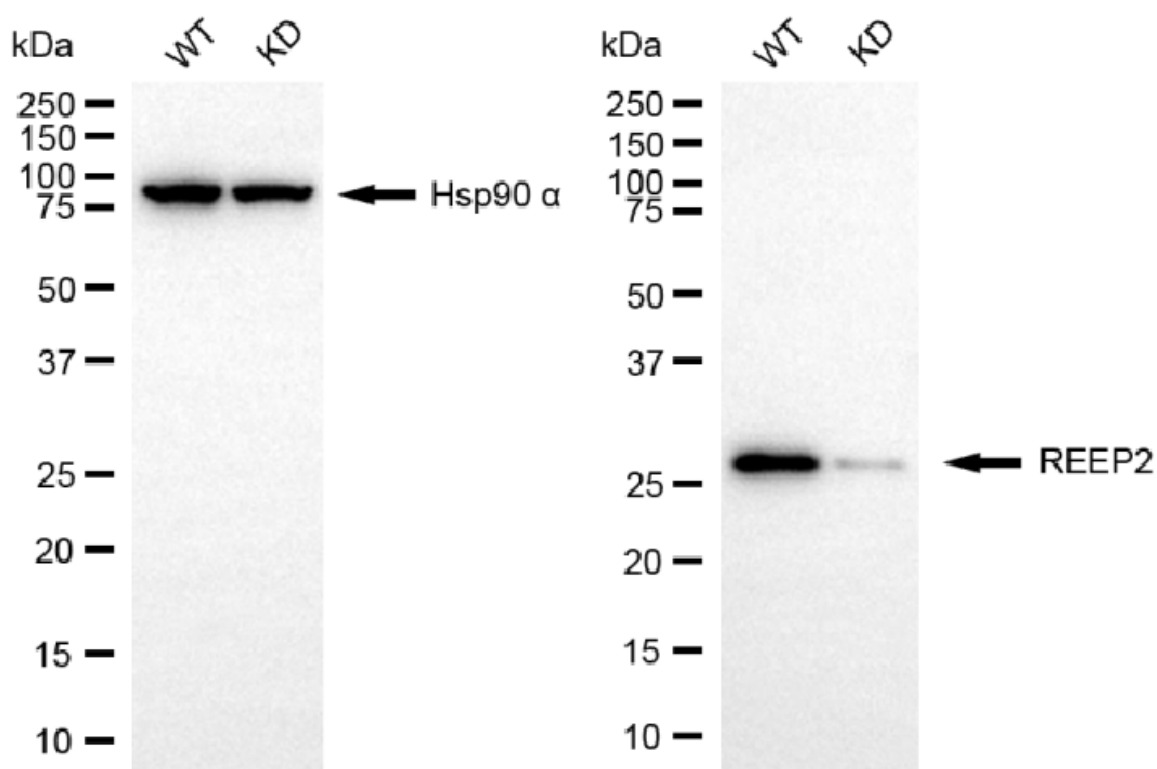


Flow cytometric analysis of REEP2 expression in HAP-1 cells using anti-REEP2 antibody (Cat#61889, 1:2,000). Green, isotype control; red, REEP2.



Copyright ©2025 Genuin Biotechnologies LLC

Western blotting analysis using anti-REEP2 antibody (Cat#61889). Total cell lysates (30 µg) from various cell lines were loaded and separated by SDS-PAGE. The blot was incubated with anti-REEP2 antibody (Cat#61889, 1:5,000) and HRP-conjugated goat anti-rabbit secondary antibody (Cat#201, 1:20,000) respectively. Image was developed using NaQ™ ECL Substrate Kit (Cat#716).



Western blotting analysis using anti-REEP2 antibody (Cat#61889). REEP2 expression in wild-type (WT) and REEP2 knockdown (KD) 293T cells with 20 μ g of total cell lysates. Hsp90 α serves as a loading control. The blot was incubated with anti-REEP2 antibody (Cat#61889, 1:5,000) and HRP-conjugated goat anti-rabbit secondary antibody (Cat#201, 1:20,000) respectively. Image was developed using NaQ™ ECL Substrate Kit (Cat#716).